

**EXHIBIT B**

**LEGEND:**



INDICATES DRAINAGE EASEMENT ACQUIRED  
0.130 ACRES (5,644 SQ.FT.)  
(SEE SHEET 2 FOR DETAIL)

P.O.B.

POINT OF BEGINNING

**BASIS OF BEARINGS:**

THE BEARINGS SHOWN HEREIN ARE  
BASED ON THE NORTHEASTERLY  
LINE OF PARCEL 1 OF PARCEL MAP  
NO. 21693 BEING N36°32'11"E.

**REFERENCE DRAWING:**

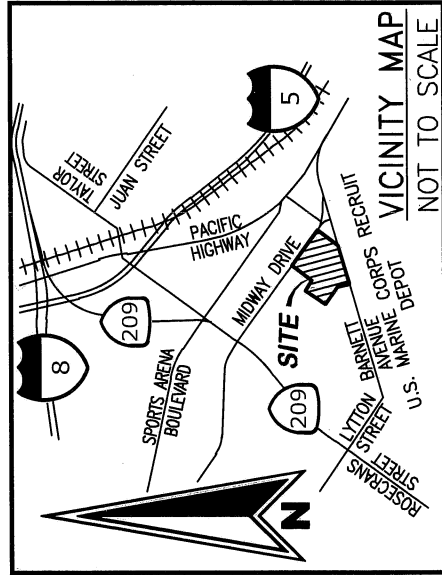
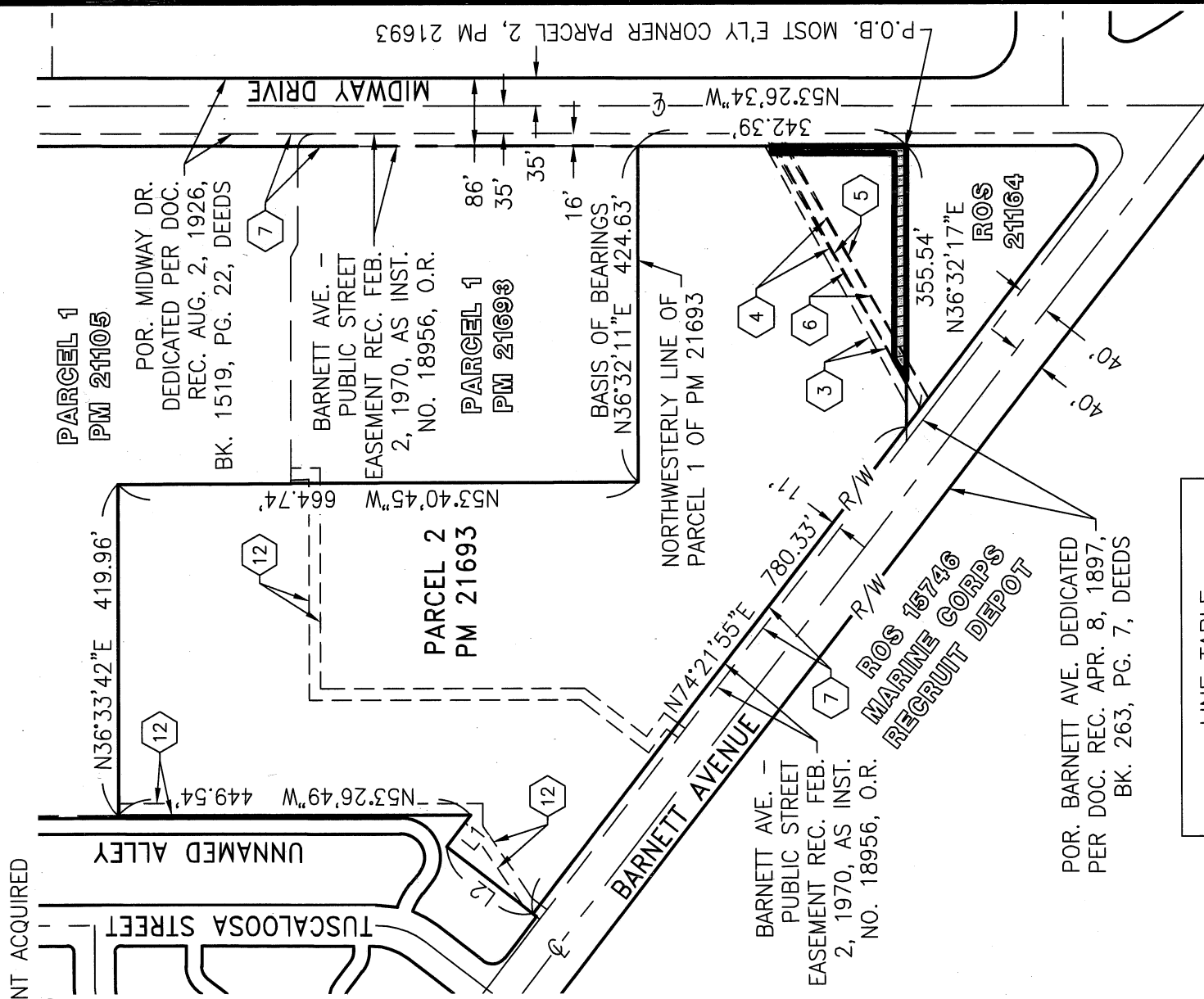
- PM 21693
- 41858-D
- 42204-D
- 42382-D

**ASSESSOR'S PARCEL NO.:**

450-480-14

**EASEMENT LEGEND:**

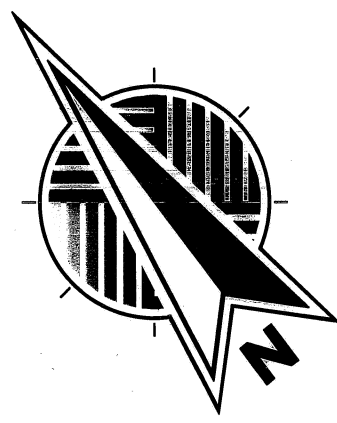
- # EXISTING EASEMENT AS NOTED IN  
EASEMENT LEGEND ON SHEET 3.



LINE TABLE	
LINE	BEARING DISTANCE
L1	N74°21'55"E 49.99'
L2	N15°38'05"W 139.07'



SCALE: 1" = 200'



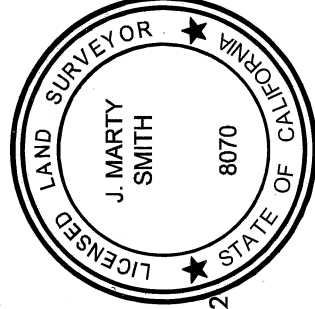
**E N G I N E E R I N G**

6390 Greenwich Dr., Suite 170, San Diego, California 92122  
tel 858.564.1500 • fax 858.567.0335 • www.fuscoe.com

*M. A. Smith* 3/28/2022

J. MARTY SMITH, LS 8070

DATE



DOCUMENT NO.: 2022-0173267

RECORDED: APRIL 20, 2022

**DRAINAGE EASEMENT  
OVER A PORTION OF PARCEL 2, PARCEL MAP NO. 21693**

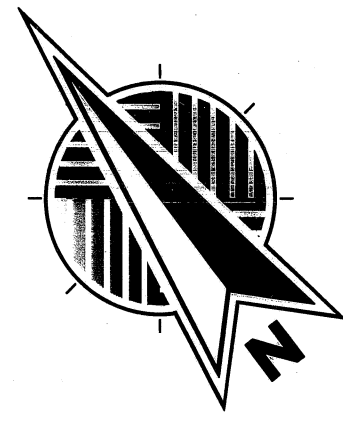
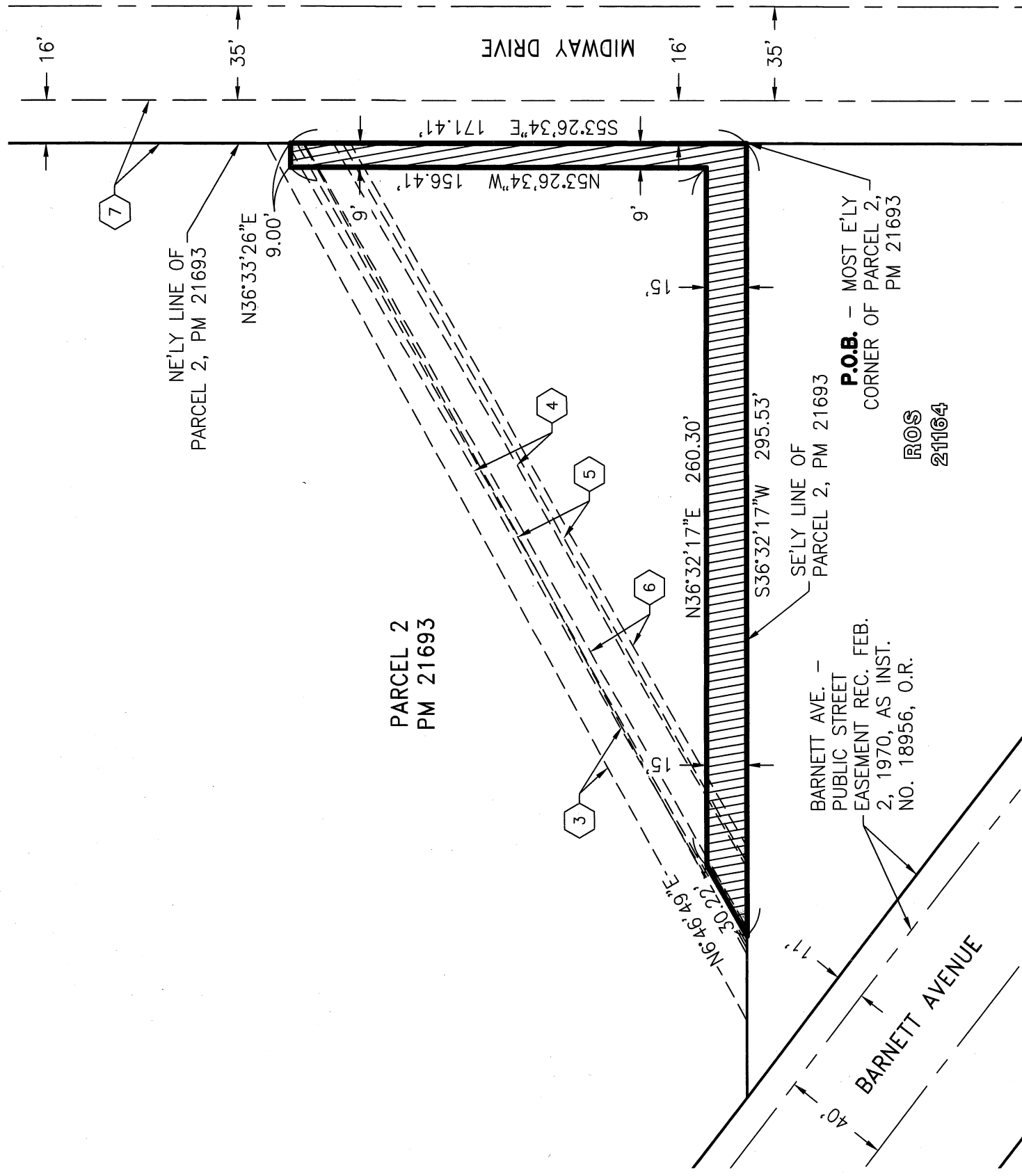
DESCRIPTION	BY	APPROVED	DATE	FILMED
ORIGINAL	FEI			
		CEI	4/12/22	

**COMPLETED**

STATUS

CITY OF SAN DIEGO, CALIFORNIA SHEET 1 OF 3	PRJ. NO. 1037071
<i>M. A. Smith</i> FOR CITY LAND SURVEYOR	1850-6267 NAD 83 COORDINATES
DIVISION HEAD	210-1707 LAMBERT COORDINATES
SECTION HEAD	100002-1-B

EXHIBIT B



**FUSCOE ENGINEERING**  
 6390 Greenwich Dr., Suite 170, San Diego, California 92122  
 tel 858.554.1500 • fax 858.597.0335 • www.fuscoe.com

DOCUMENT NO.: 2022-0173267

RECORDED: APRIL 20, 2022

**DRAINAGE EASEMENT  
 OVER A PORTION OF PARCEL 2, PARCEL MAP NO. 21693**

DESCRIPTION	BY	APPROVED	DATE	FILMED
ORIGINAL	FEI			
		CED	4/14/22	

*COMPLETED*

STATUS

CITY OF SAN DIEGO, CALIFORNIA SHEET 2 OF 3	PRJ. NO. 1037071
<i>Fuscoe &amp; Co</i> FOR CITY LAND SURVEYOR	1850-6267 NAD 83 COORDINATES
DIVISION HEAD	210-1707 LAMBERT COORDINATES
SECTION HEAD	100002-2-B

**EXHIBIT B**

**EASEMENT LEGEND:**

- 3 AN EASEMENT IN FAVOR OF THE CITY OF SAN DIEGO, A MUNICIPAL CORPORATION FOR SEWER, RIGHT OF WAY AND INCIDENTAL PURPOSES, RECORDED OCTOBER 24, 1929, IN BOOK 1690 OF DEEDS, PAGE 351.
- 4 AN EASEMENT IN FAVOR OF FRONTIER ENTERPRISES, INC., A DELAWARE CORPORATION FOR STORM SEWER AND INCIDENTAL PURPOSES, RECORDED OCTOBER 09, 1941, AS BOOK 1261, PAGE 16 OF OFFICIAL RECORDS.
- 5 AN EASEMENT IN FAVOR OF FRONTIER ENTERPRISES, INC., A DELAWARE CORPORATION FOR STORM DRAIN AND INCIDENTAL PURPOSES, RECORDED DECEMBER 15, 1941, AS BOOK 1291, PAGE 52 OF OFFICIAL RECORDS.
- 6 AN EASEMENT IN FAVOR OF THE CITY OF SAN DIEGO FOR STORM DRAIN OR DRAINS AND INCIDENTAL PURPOSES, RECORDED SEPTEMBER 29, 1969, AS INSTRUMENT NO. 178008 OF OFFICIAL RECORDS.
- 7 AN EASEMENT IN FAVOR OF THE CITY OF SAN DIEGO, A MUNICIPAL CORPORATION FOR PUBLIC STREET AND INCIDENTAL PURPOSES, RECORDED FEBRUARY 02, 1970, AS INSTRUMENT NO. 18956 OF OFFICIAL RECORDS.
- 12 AN EASEMENT AGREEMENT BETWEEN UNITED STATES POSTAL SERVICE, AN INDEPENDENT ESTABLISHMENT OF THE EXECUTIVE BRANCH OF THE GOVERNMENT OF THE UNITED STATES, AND REXFORD INDUSTRIAL REALTY, L.P. A MARYLAND LIMITED PARTNERSHIP FOR PRIVATE STORM DRAIN AND INCIDENTAL PURPOSES, RECORDED NOVEMBER 13, 2015, AS INSTRUMENT NO. 2015-0590032 OF OFFICIAL RECORDS. MODIFIED BY THE TERMS AND PROVISIONS OF THE DOCUMENT RECORDED DECEMBER 18, 2019, AS INSTRUMENT NO. 2019-0592488 OF OFFICIAL RECORDS.
- THE TERMS AND PROVISIONS CONTAINED IN THE DOCUMENT ENTITLED "SHARED ACCESS EASEMENT AGREEMENT" RECORDED NOVEMBER 13, 2015, AS INSTRUMENT NO. 2015-0590031 OF OFFICIAL RECORDS. THE EASEMENT IS OFFSITE BUT THE TERMS AND PROVISIONS ARE BLANKET IN NATURE.
- AN EASEMENT FOR VARIOUS HIGH VOLTAGE ELECTRICAL CABLES, TRANSFORMERS, SWITCHES AND OTHER MISCELLANEOUS EQUIPMENT, PUBLIC UTILITIES, INGRESS, EGRESS AND INCIDENTAL PURPOSES, GRANTED TO SAN DIEGO GAS AND ELECTRIC COMPANY RECORDED FEBRUARY 16, 1970, AS INSTRUMENT NO. 27845 OF OFFICIAL RECORDS. SAID EASEMENT HAS NO SPECIFIC LOCATION SET FORTH IN THE DEED AND CANNOT BE PLOTTED ON THE DRAWING.
- AN EASEMENT FOR VARIOUS HIGH VOLTAGE ELECTRICAL CABLES, TRANSFORMERS, SWITCHES AND OTHER MISCELLANEOUS EQUIPMENT, PUBLIC UTILITIES, INGRESS, EGRESS AND INCIDENTAL PURPOSES, GRANTED TO SAN DIEGO GAS AND ELECTRIC COMPANY RECORDED OCTOBER 02, 1972, AS INSTRUMENT NO. 264014 OF OFFICIAL RECORDS. SAID EASEMENT HAS NO SPECIFIC LOCATION SET FORTH IN THE DEED AND CANNOT BE PLOTTED ON THE DRAWING.
- THE FACT THAT THE LAND LIES WITHIN THE BOUNDARIES OF THE NORTH BAY REDEVELOPMENT PROJECT AREA, AS DISCLOSED BY THE DOCUMENT RECORDED JUNE 03, 1998 AS INSTRUMENT NO. 1998-0330956 OF OFFICIAL RECORDS. SAID EASEMENT HAS NO SPECIFIC LOCATION SET FORTH IN THE DEED AND CANNOT BE PLOTTED ON THE DRAWING.
- THE TERMS AND PROVISIONS CONTAINED IN THE DOCUMENT ENTITLED "DECLARATION OF RESTRICTION" RECORDED APRIL 6, 2020, AS INSTRUMENT NO. 2020-0174957 OF OFFICIAL RECORDS. SAID DOCUMENT IS BLANKET IN NATURE OVER THE SUBJECT PROPERTY.
- THE TERMS AND PROVISIONS CONTAINED IN THE DOCUMENT ENTITLED "ENCROACHMENT MAINTENANCE AND REMOVAL AGREEMENT" RECORDED MAY 3, 2021, AS INSTRUMENT NO. 2021-0339744 OF OFFICIAL RECORDS. SAID ENCROACHMENT HAS NO SPECIFIC LOCATION SET FORTH IN THE DOCUMENT AND CANNOT BE PLOTTED ON THE DRAWING.
- THE TERMS AND PROVISIONS CONTAINED IN THE DOCUMENT ENTITLED "STORM WATER MANAGEMENT AND DISCHARGE CONTROL MAINTENANCE AGREEMENT" RECORDED MAY 3, 2021, AS INSTRUMENT NO. 2021-0339793 OF OFFICIAL RECORDS. SAID DOCUMENT IS BLANKET IN NATURE OVER THE SUBJECT PROPERTY.



**FUSCOE**  
**E N G I N E E R I N G**

6390 Greenwich Dr., Suite 170, San Diego, California 92122  
tel 858.554.1500 • fax 858.597.0335 • www.fuscoe.com

DOCUMENT NO.: 2022-0173267

RECORDED: APRIL 20, 2022

**DRAINAGE EASEMENT  
OVER A PORTION OF PARCEL 2, PARCEL MAP NO. 21693**

DESCRIPTION	BY	APPROVED	DATE	FILMED	CITY OF SAN DIEGO, CALIFORNIA SHEET 3 OF 3	PRJ. NO. 1037071
ORIGINAL	FEI					
		<i>CEI</i>	<i>4/12/22</i>		<i>Amelia R. ...</i> FOR CITY LAND SURVEYOR	1850-6267 NAD 83 COORDINATES
					DIVISION HEAD	210-1707 LAMBERT COORDINATES
					SECTION HEAD	100002-3-B

**COMPLETED**

STATUS