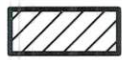
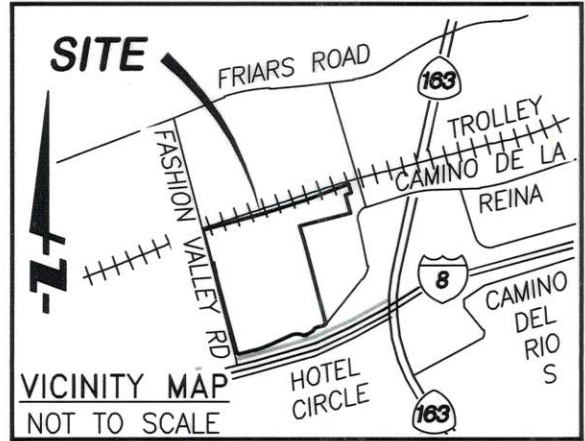


EXHIBIT B

LEGEND:

-  INDICATES PUBLIC WATER EASEMENT ACQUIRED
- PARCEL A: 103 SQUARE FEET
- PARCEL B: 53 SQUARE FEET
- PARCEL C: 53 SQUARE FEET
- PARCEL D: 92 SQUARE FEET
- PARCEL E: 108 SQUARE FEET

T.P.O.B TRUE POINT OF BEGINNING
 P.O.B. POINT OF BEGINNING



REFERENCE DRAWINGS:

MAP 16288, 40227-D, 33513-D, 10396-D

BASIS OF BEARINGS:

THE BEARINGS SHOWN HEREON ARE BASED NORTHWESTERLY LINE OF LOT 2 OF MAP NO. 16288 BEING N75°06'33"E.

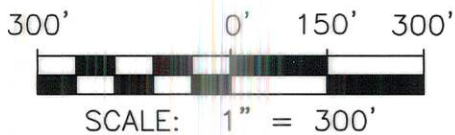
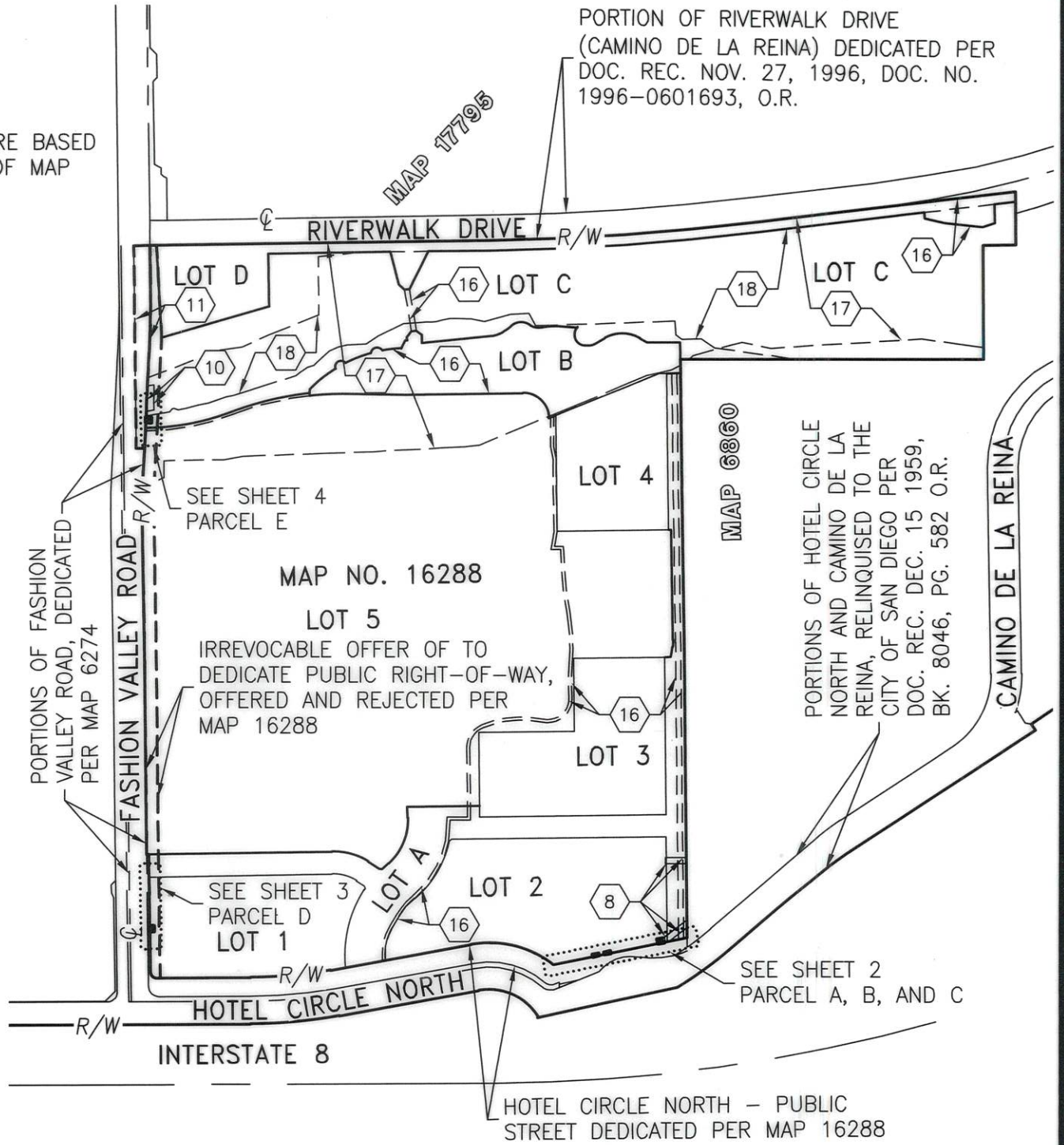
ASSESSOR'S PARCEL NO.:

437-260-50, 51 & 57

EASEMENT LEGEND:

EXISTING EASEMENT AS NOTED ON EASEMENT LEGEND ON SHEET 4.

PORTION OF RIVERWALK DRIVE (CAMINO DE LA REINA) DEDICATED PER DOC. REC. NOV. 27, 1996, DOC. NO. 1996-0601693, O.R.



FUSCOE ENGINEERING
 6390 Greenwich Dr., Suite 170, San Diego, California 92122
 tel 858.554.1500 • fax 858.597.0335 • www.fuscoe.com

J. Marty Smith
 J. MARTY SMITH, LS 8070

12/13/2021
 DATE



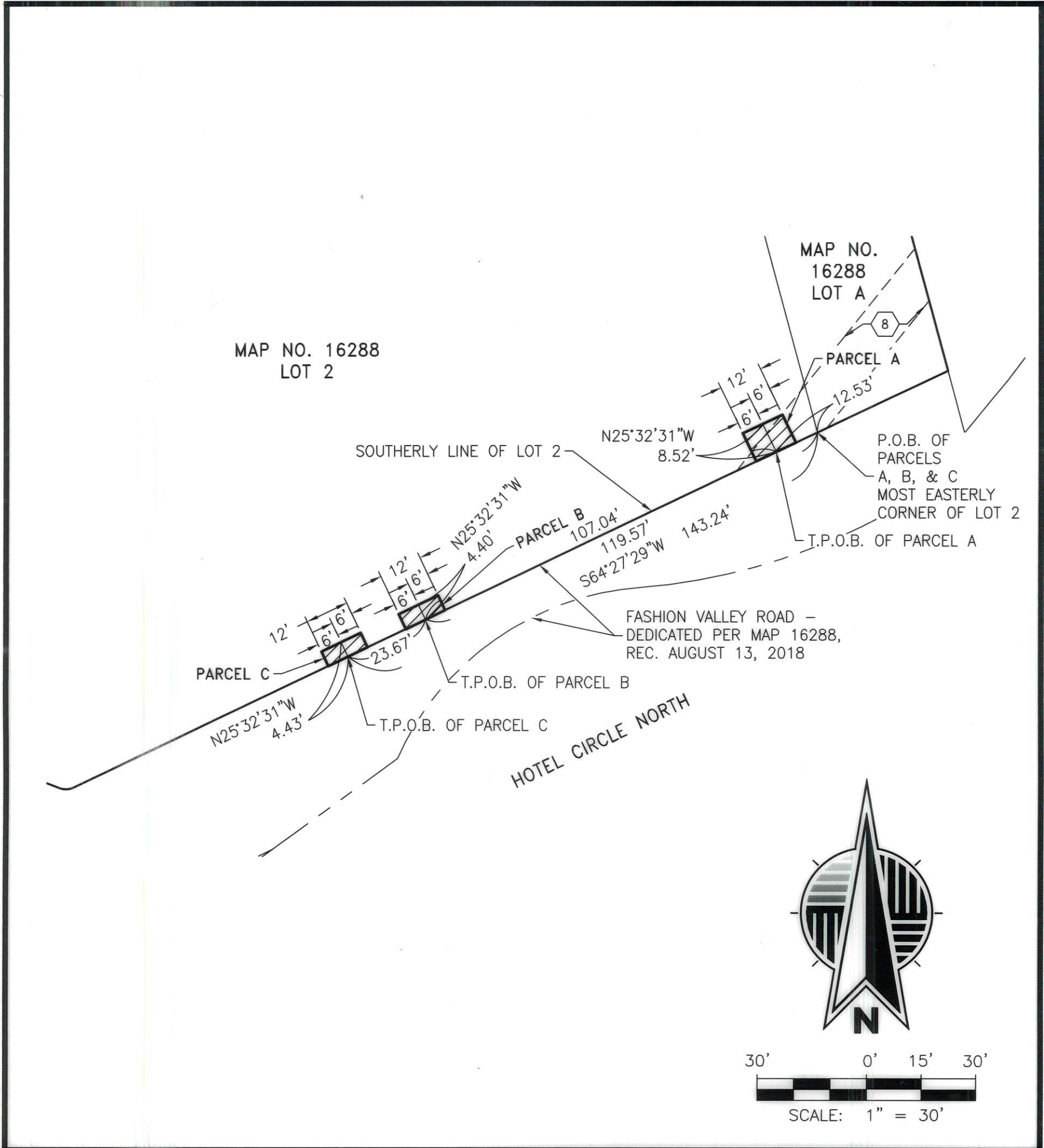
DOCUMENT NO.: *2022-0177163*
2022-0177164
2022-0177165

RECORDED: *APRIL 22, 2022*

PUBLIC WATER EASEMENT
 OVER PORTIONS OF LOT 1, LOT 2, & LOT C, MAP NO. 16288

DESCRIPTION	BY	APPROVED	DATE	FILMED	CITY OF SAN DIEGO, CALIFORNIA SHEET 1 OF 5	PRJ. NO. 1036980
ORIGINAL	FEI					
					<i>J. Marty Smith</i>	1856-6277
					FOR CITY LAND SURVEYOR	NAD 83 COORDINATES
						218-1717
					DIVISION HEAD	LAMBERT COORDINATES
						100005-1-B
					SECTION HEAD	

EXHIBIT B



FUSCOE

ENGINEERING
6390 Greenwich Dr., Suite 170, San Diego, California 92122
tel 858.554.1500 • fax 858.597.0335 • www.fuscoe.com

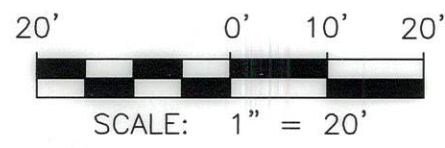
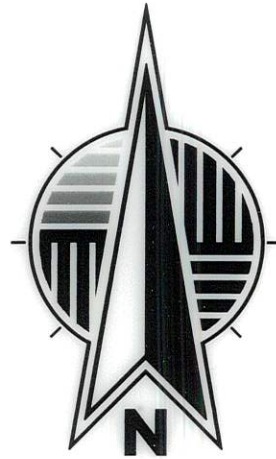
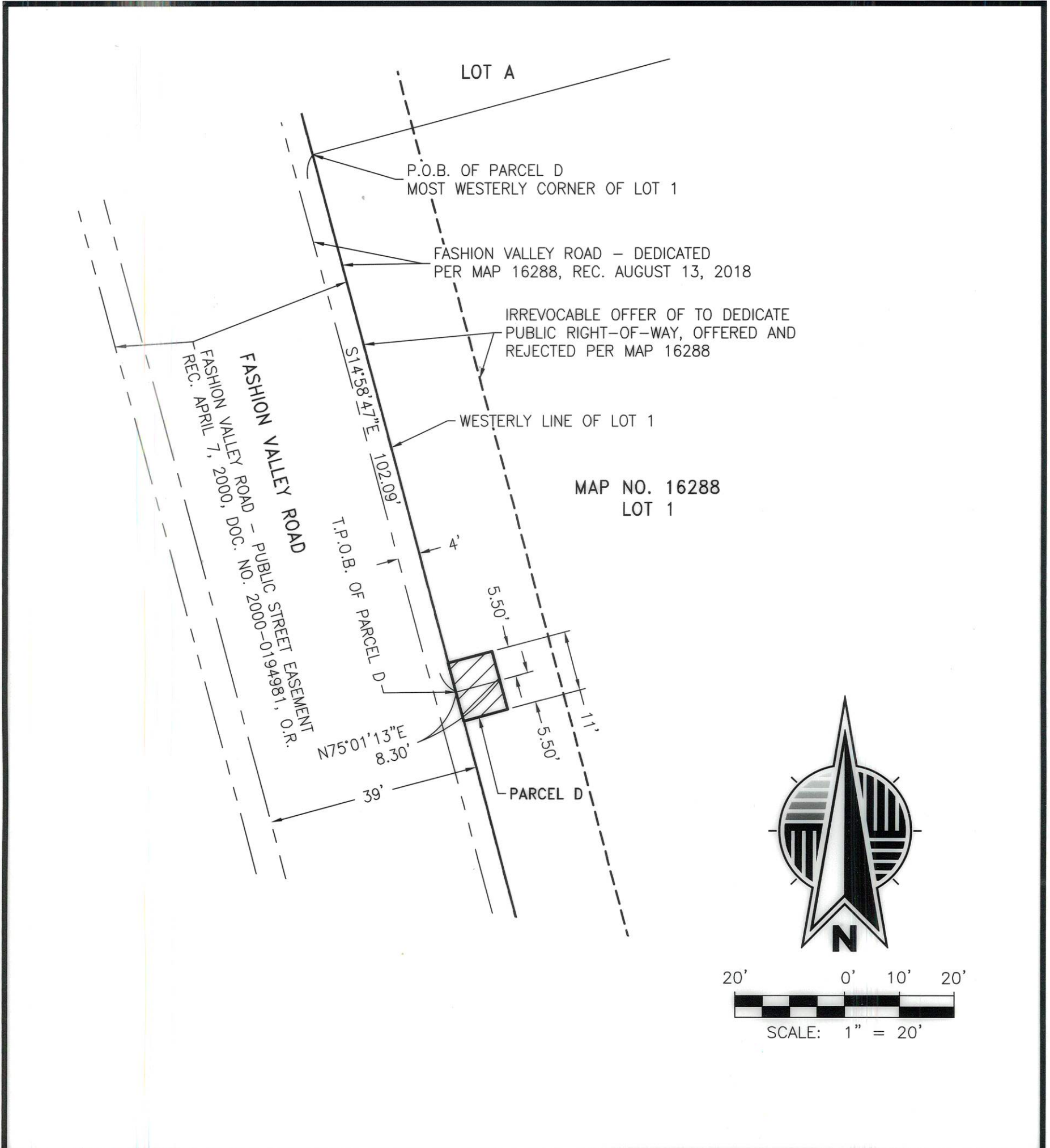
DOCUMENT NO.: 2022-0177163
2022-0177164
2022-0177165

RECORDED: APRIL 22, 2022

**PUBLIC WATER EASEMENT
OVER PORTIONS OF LOT 1, LOT 2, & LOT C, MAP NO. 16288**

DESCRIPTION	BY	APPROVED	DATE	FILMED	CITY OF SAN DIEGO, CALIFORNIA SHEET 2 OF 5		PRJ. NO. 1036980
ORIGINAL	FEI						
					<i>Fuller, K</i>	<i>4/21/2022</i>	1856-6277
					FOR CITY LAND SURVEYOR	DATE	NAD 83 COORDINATES
					DIVISION HEAD		218-1717
							LAMBERT COORDINATES
							100005-2-B
					SECTION HEAD		
					STATUS		

EXHIBIT B



FUSCOE
ENGINEERING
 6390 Greenwich Dr., Suite 170, San Diego, California 92122
 tel 858.554.1500 • fax 858.597.0335 • www.fuscoe.com

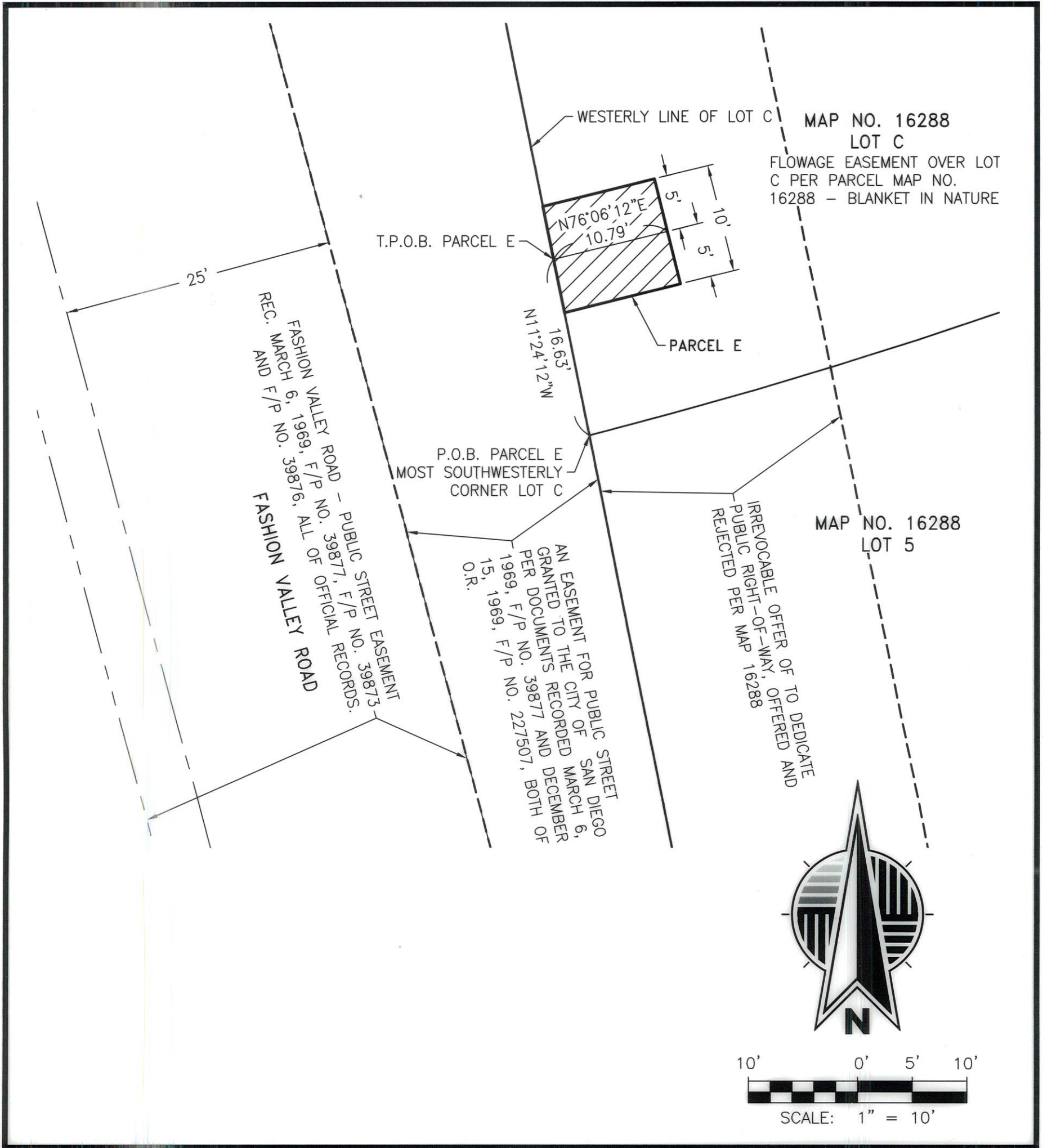
DOCUMENT NO.: 2022-0177163
2022-0177164
2022-0177165

RECORDED: APRIL 22, 2022

**PUBLIC WATER EASEMENT
 OVER PORTIONS OF LOT 1, LOT 2, & LOT C, MAP NO. 16288**

DESCRIPTION	BY	APPROVED	DATE	FILMED	CITY OF SAN DIEGO, CALIFORNIA SHEET 3 OF 5	PRJ. NO. 1036980
ORIGINAL	FEI					
					<i>Frank R. ...</i>	NAD 83 COORDINATES
					FOR CITY LAND SURVEYOR	218-1717
					DIVISION HEAD	LAMBERT COORDINATES
					SECTION HEAD	100005-3-B
					STATUS	

EXHIBIT B



FUSCOE
ENGINEERING
6390 Greenwich Dr., Suite 170, San Diego, California 92122
tel 858.554.1500 • fax 858.597.0335 • www.fuscoe.com

DOCUMENT NO.: 2022-0177103
2022-0177104
2022-0177105

RECORDED: APRIL 22, 2022

PUBLIC WATER EASEMENT
OVER PORTIONS OF LOT 1, LOT 2, & LOT C, MAP NO. 16288

DESCRIPTION	BY	APPROVED	DATE	FILMED	CITY OF SAN DIEGO, CALIFORNIA SHEET 4 OF 5		PRJ. NO. 1036980
ORIGINAL	FEI				<i>Fred R. King</i>	4/21/2022	1856-6277
					FOR CITY LAND SURVEYOR	DATE	NAD 83 COORDINATES
					DIVISION HEAD		218-1717
							LAMBERT COORDINATES
					SECTION HEAD		100005-4-B
					STATUS		

EXHIBIT B

EASEMENT LEGEND:

- ⑧ AN EASEMENT FOR PUBLIC UTILITIES & ACCESS COMPILED FROM EASEMENTS GRANTED TO SDG&E PER DOCUMENTS RECORDED; FEBRUARY 14, 1966, F/P NO. 25975 AND FEBRUARY 17, 1966, F/P NO. 28592 BOTH OF O.R.
- ⑩ AN EASEMENT FOR PUBLIC STORM DRAIN GRANTED TO THE CITY OF SAN DIEGO PER DOCUMENTS RECORDED MARCH 6, 1969, F/P NO. 39872, F/P NO. 39873 AND F/P NO. 39876, ALL OF OFFICIAL RECORDS.
- ⑪ AN EASEMENT FOR PUBLIC STREET GRANTED TO THE CITY OF SAN DIEGO PER DOCUMENTS RECORDED MARCH 6, 1969, F/P NO. 39877 AND DECEMBER 15, 1969, F/P NO. 227507, BOTH OF O.R.
- ⑯ RECREATION EASEMENT DEDICATED AND ACCEPTED ON MAP NO. 16288 TOWN & COUNTRY RECORDED AUGUST 13, 2018.
- ⑰ A FLOWAGE EASEMENT GRANTED AND ACCEPTED ON MAP NO. 16288 TOWN & COUNTRY RECORDED AUGUST 13, 2018.
- ⑱ COVENANT OF EASEMENT FOR MULTI-HABITAT PLANNING AREA PER DOCUMENT RECORDED JUNE 27, 2018, AS DOCUMENT NO. 2018-0261748, O.R.



6390 Greenwich Dr., Suite 170, San Diego, California 92122
tel 858.554.1500 • fax 858.597.0335 • www.fuscoe.com

DOCUMENT NO.: 2022-0177163
2022-0177164
2022-0177165

RECORDED: APRIL 22, 2022

PUBLIC WATER EASEMENT
OVER PORTIONS OF LOT 1, LOT 2, & LOT C, MAP NO. 16288

DESCRIPTION	BY	APPROVED	DATE	FILMED	CITY OF SAN DIEGO, CALIFORNIA SHEET 5 OF 5		PRJ. NO. 1036980
ORIGINAL	FEI						
					<i>Sub R. # 17</i>	<i>4/21/2022</i>	1856-6277
					FOR CITY LAND SURVEYOR	DATE	NAD 83 COORDINATES
					DIVISION HEAD		218-1717
							LAMBERT COORDINATES
							100005-5-B
					SECTION HEAD		
					STATUS		