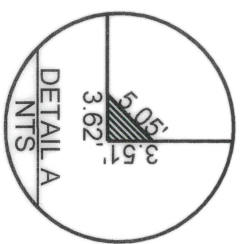
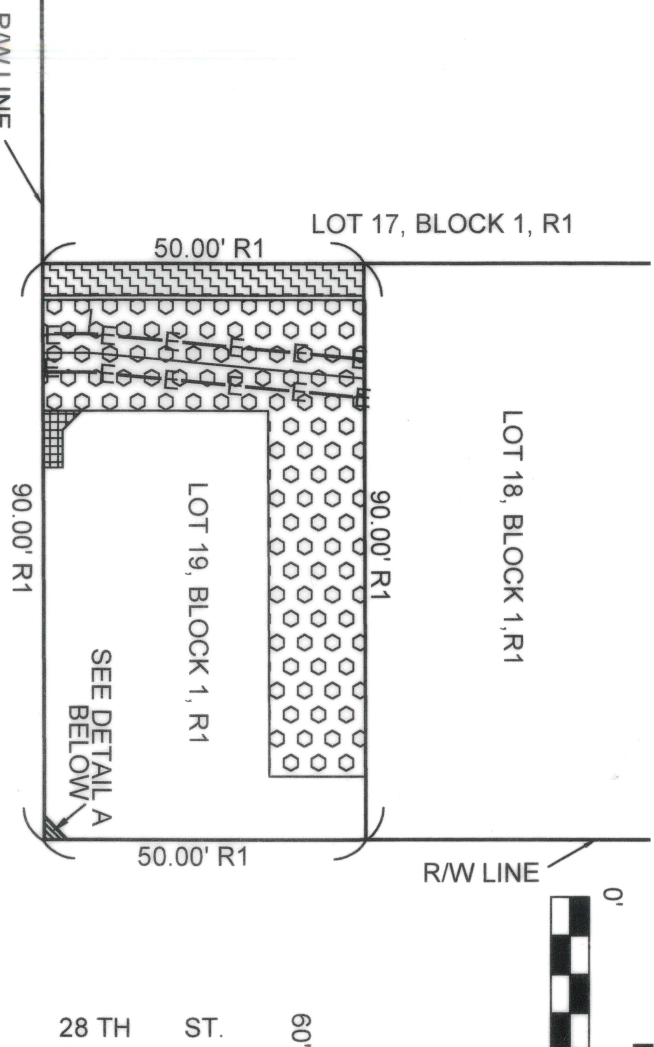
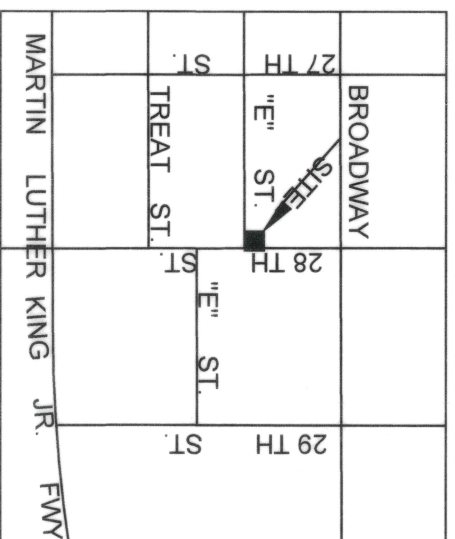


EXHIBIT B



SCALE 1" = 30'

BLOCK 65  
MAP 547

LEGEND

- = AN EASEMENT FOR STORM DRAIN PURPOSES GRANTED TO THE CITY OF SAN DIEGO PER DOCUMENT RECORDED OCT. 14, 1983 AS FILE NUMBER 83-371243. O.R.
- = AN EASEMENT FOR DRIVEWAY, UTILITY PURPOSES AND SURFACE WATER DRAINAGE GRANTED TO E & 28TH STREETS, LLC PER DOCUMENT RECORDED JULY 20, 2021 AS INST. # 2021-0516374 O.R.
- = AN EASEMENT FOR UTILITY PURPOSES GRANTED TO E & 28TH STREETS, LLC PER DOCUMENT RECORDED JULY 20, 2021 AS INST. # 2021-0516374 O.R.
- = EASTERLY AND WESTERLY BOUNDARIES OF AN EASEMENT TO SAN DIEGO GAS AND ELECTRIC CO. FOR THE PURPOSES OF TRANSMISSION AND DISTRIBUTION OF ELECTRICITY AND COMMUNICATION FACILITIES, PER DOCUMENT RECORDED NOV. 26, 2019 AS INST. # 2019-0551022 O.R.
- = PUBLIC STREET EASEMENT ACQUIRED AREA = 6.35 SQ. FT.

REFERENCES

R1 = KARRLE ADDITION, MAP 1614  
APN 534-421-14  
CITY DRAWING 39891-D

NOTE: E STREET DEDICATED BY R1. 28TH STREET DEDICATED BY R1 AND MAP 547.

**COWELL SURVEYING SERVICES**  
12062 SILVER CREST ST.  
MOORPARK, CA 93021  
818-256-7756

*William A. Cowell*  
11/16/21  
WILLIAM A COWELL P.L.S. #6326



DOCUMENT No. 2021-0843061  
RECORDED Dec. 14 - 2021

**PUBLIC STREET EASEMENT**

IN A PORTION OF LOT 19, BLOCK 1, KARRLE ADDITION MAP NO. 1614

DESCRIPTION	BY	APPROVED	DATE	FILMED	CITY OF SAN DIEGO, CALIFORNIA	PRJ NO: 1040006
ORIGINAL	CS5	S.O.	1/7/2022		SHEET 1 OF 1 SHEET	I.O. N/A
					FOR CITY LAND SURVEYOR <i>And R. Fry</i>	1840-6287
					DATE <u>12/21/2021</u>	CCS 83 COORDINATES
						200-1728
						NAD 27 COORDINATES
ACQUIRED					STATUS	100038-1-B