

EXHIBIT C

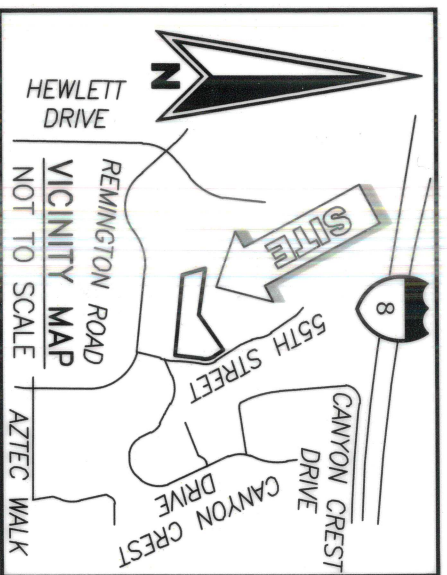
REFERENCE DRAWINGS:
 MAP 3157 ROS 21433 DWG #0100023

ASSESSOR'S PARCEL NO.:
 462-220-04-00

EASEMENT LEGEND:
 SEE SHEET 2 FOR EASEMENT LEGEND AND
 NON-PLOTTABLE EASEMENT NOTE.

HISTORIC RIGHTS-OF-WAY LEGEND:

SEE SHEET 2 FOR HISTORIC RIGHTS-OF-WAY
 LEGEND.



BASIS OF BEARINGS:

THE BASIS OF BEARINGS FOR THIS SURVEY IS THE CALIFORNIA COORDINATE SYSTEM, CCS83, ZONE 6, EPOCH (1991.35) AND IS DETERMINED BY G.P.S. MEASUREMENTS TAKEN ON 06/14/2021 AT POINTS 'A' & 'B' AS SHOWN HEREON. POINTS 'A' & 'B' WERE ESTABLISHED FROM G.P.S. STATION 161 AND G.P.S. STATION 1102 PER RECORD RECORD OF SURVEY NO. 14492. THE BEARING FROM POINT 'A' TO POINT 'B' IS NORTH 83°24'55" WEST.

QUOTED BEARINGS FROM REFERENCE MAPS OR DEEDS MAY OR MAY NOT BE IN TERMS OF SAID SYSTEM

THE COMBINED GRID FACTOR AT POINT 'A' IS 0.99998662.

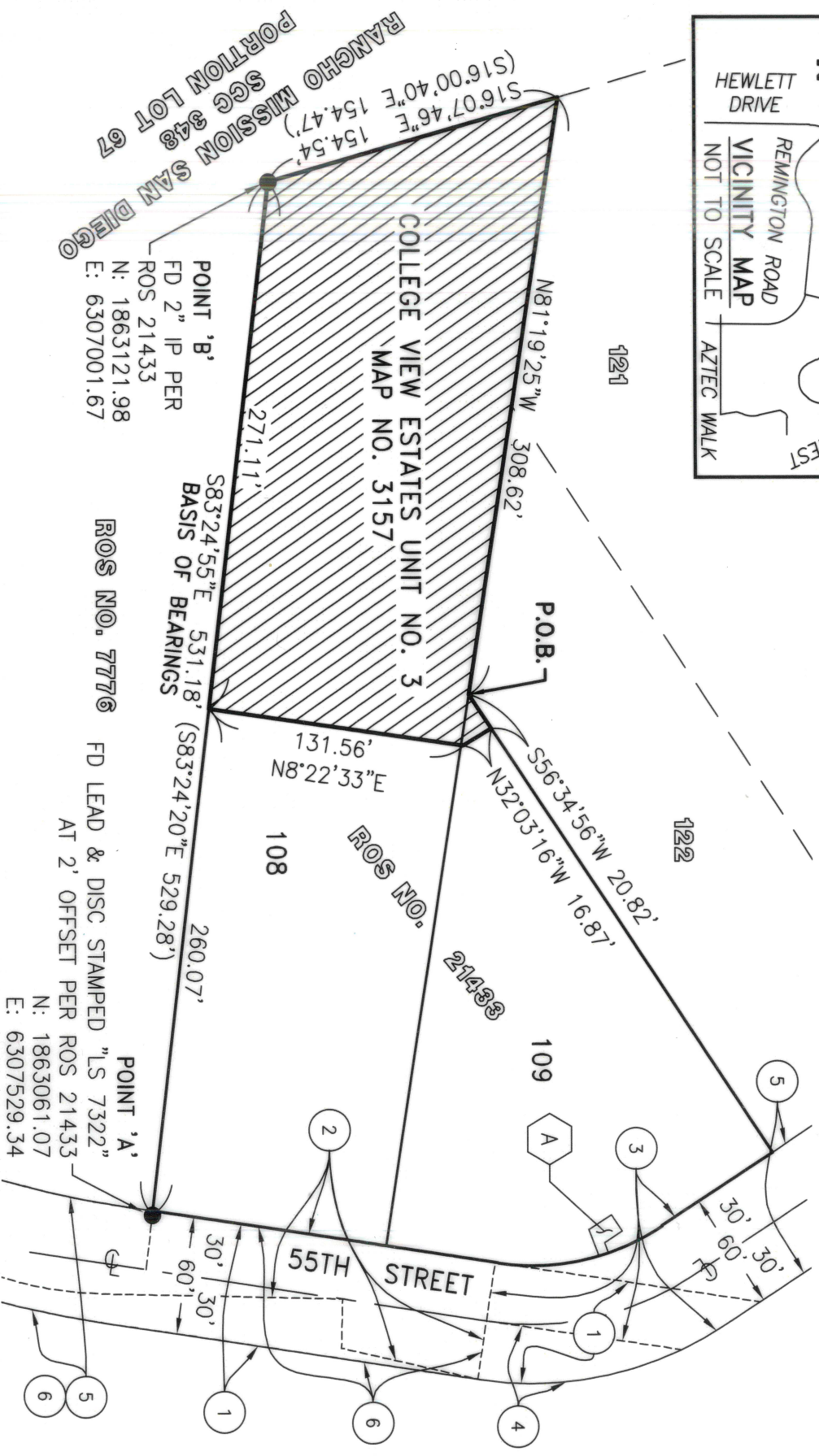
GRID DISTANCE = GROUND DISTANCE X COMBINED GRID FACTOR.
 ELEVATION AT POINT 'A' IS 418.78'

LEGEND:

INDICATES COVENANT OF EASEMENT ACQUIRED
 AREA: 41,361 SQUARE FEET (0.950 ACRES)

P.O.B. INDICATES POINT OF BEGINNING

(...) INDICATES RECORD DATA PER MAP 3157



FUSCOE ENGINEERING
 6390 Greenwich Dr., Suite 170, San Diego, California 92122
 tel 858.554.1500 fax 858.597.0335 o www.fuscoe.com



RESOLUTION NO.: N/A
 RECORDED: N/A
 DOCUMENT NO.: 2022-0175237
 RECORDED: April 21, 2022

**COVENANT OF EASEMENT OF ENVIRONMENTALLY SENSITIVE LANDS
 OVER PORTIONS OF LOT 108 AND LOT 109, MAP NO. 3157**

| DESCRIPTION | BY | APPROVED | DATE | FILMED | CITY OF SAN DIEGO, CALIFORNIA SHEET 1 OF 2 | PTS NO.: 646497 PRJ NO.: 1041619 JOB NO. 4550 |
|-------------|-----|----------|-----------|--------|--|---|
| ORIGINAL | FEI | S.O. | 3/28/2022 | | | |
| | | | | | | |
| | | | | | | |

| | | | |
|-----------|--------|------------|------|
| COMPLETED | STATUS | 100061-1-B | B001 |
|-----------|--------|------------|------|

EXHIBIT C

EASEMENT LEGEND:

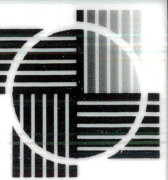
Ⓐ WATER EASEMENT TO THE CITY OF SAN DIEGO PER DOC. NO. 2022-0175241 RECORDED ON April 21, 2022 (SEE CITY DWG. NO. 100059-B).

NON-PLOTTABLE EASEMENT:

AN EASEMENT IN FAVOR OF THE CITY OF SAN DIEGO, A MUNICIPAL CORPORATION FOR PUBLIC SEWER AND INCIDENTAL PURPOSES, RECORDED SEPTEMBER 14, 1954, AS BOOK 5362, PAGE 297 OF OFFICIAL RECORDS.

HISTORIC RIGHTS-OF-WAY LEGEND:

- ① INDICATES EASEMENT FOR PUBLIC ROAD PURPOSES GRANTED TO THE CITY OF SAN DIEGO PER DOCUMENT RECORDED 07/06/1954, IN BOOK 5290, PAGE 418, OF OFFICIAL RECORDS.
- ② INDICATES EASEMENT FOR PUBLIC ROAD PURPOSES GRANTED TO THE CITY OF SAN DIEGO PER DOCUMENT RECORDED 09/13/1954, IN BOOK 5368, PAGE 186, OF OFFICIAL RECORDS.
- ③ INDICATES 55TH STREET DEDICATED PER MAP 3157.
- ④ INDICATES PORTION OF 55TH STREET ACQUIRED BY THE CITY OF SAN DIEGO PER DRAWING NO. 5495-B AND RESOLUTION NO. 121280 RECORDED NOVEMBER 18, 1954 IN BOOK 5446 PAGE 160 OF OFFICIAL RECORDS.
- ⑤ INDICATES PORTION OF 55TH STREET ACQUIRED BY THE CITY OF SAN DIEGO PER DOCUMENT RECORDED SEPTEMBER 20, 1954 IN BOOK 5368 PAGE 193 OF OFFICIAL RECORDS.
- ⑥ INDICATES PORTION OF 55TH STREET ACQUIRED BY THE CITY OF SAN DIEGO AS PARCEL A OF ORD. 6413 AS SHOWN ON DRAWING NUMBER 11700B-L DATED JULY 14, 1954.



FUSCOE

E N G I N E E R I N G

6390 Greenwich Dr., Suite 170, San Diego, California 92122
tel 858.554.1500 o fax 858.597.0335 o www.fuscoe.com

COVENANT OF EASEMENT OF ENVIRONMENTALLY SENSITIVE LANDS
OVER PORTIONS OF LOT 108 AND LOT 109, MAP NO. 3157

RESOLUTION NO.: n/a
RECORDED: n/a
DOCUMENT NO.: 2022-0175231
RECORDED: April 21, 2022

| DESCRIPTION | BY | APPROVED | DATE | FILMED | | PTS NO.: 646497 PRJ NO.: 1041619 JOB NO. 4550 | |
|------------------|-----|----------|---------|--------|--------|---|------|
| ORIGINAL | FEI | S.D. | 4/21/22 | | | | |
| | | | | | | 1862-6307 | |
| | | | | | | NAD 83 COORDINATES | |
| | | | | | | 222-1747 | |
| | | | | | | LAMBERT COORDINATES | |
| COMPLETED | | | | | STATUS | 100061-2-B | B002 |