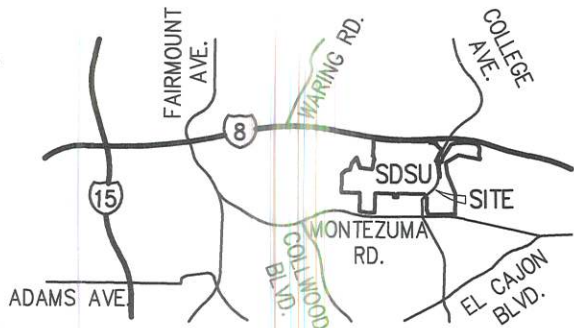


EXHIBIT "B"



VICINITY MAP

NOT TO SCALE

REFERENCES

- IMPROVEMENT PLAN DWG. 41605-D C.C.S. 348
- CITY ENG. DWG. NO. 12903-D
- CITY ENG. DWG. NO. 14985-B
- INST. NO. 44571 O.R.
- INST. NO. 84-174623 O.R.
- MAP 346
- MAP 2686
- ROS 7776
- ROS 23861
- ROS 24108

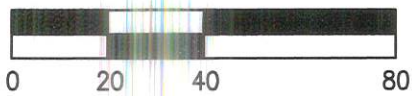
RANCHO MISSION OF SAN DIEGO
C.C.S. 348
POR. OF LOT 67

SAN DIEGO STATE UNIVERSITY
APN 462-230-19

SEE SHEET 2

"PAR. 1 - STREET EASEMENT" PER E2

CITY ENG. DWG. NO. 12903-1D



SCALE 1" = 40'

NOTE: SEE SHEET 3 FOR NON-PLOTTABLE EASEMENTS.

CURVE TABLE

CURVE NO.	DELTA	RADIUS	LENGTH
C1	3°21'03"	693.99' [694.00']	40.59'

AGUIRRE & ASSOCIATES
8363 CENTER DRIVE, SUITE 5A
LA MESA CA 91942 (619) 464-6978

Joel D. Riipinen 8/10/22
JOEL D. RIIPINEN L.S. 7942 DATE



DOCUMENT No. 2023-0107909, O.R.
RECORDED APRIL 25, 2023

ELECTRICAL EASEMENT

OVER THAT PORTION OF LOT 67 OF RANCHO MISSION OF SAN DIEGO, IN THE CITY OF SAN DIEGO, COUNTY OF SAN DIEGO, STATE OF CALIFORNIA, ACCORDING TO PARTITION MAP ON FILE IN THE OFFICE OF THE COUNTY CLERK OF SAN DIEGO COUNTY IN ACTION NO. 348 IN SUPERIOR COURT OF SAID COUNTY

DESCRIPTION	BY	APPROVED	DATE	FILMED	CITY OF SAN DIEGO, CALIFORNIA	PRJ 1041121
ORIGINAL	JR				SHEET 1 OF 3 SHEETS	I.O. N/A
					<i>Joel D. Riipinen</i>	1858-6305
					FOR CITY LAND SURVEYOR	CCS 83 COORDINATES
					DATE	220-1747
						NAD 27 COORDINATES
						100085-1-B
					STATUS	

BASIS OF BEARINGS

THE BASIS OF BEARINGS FOR THIS SURVEY IS THE CALIFORNIA COORDINATE SYSTEM, CCS83, ZONE 6, EPOCH 1991.35 AND BASED FROM G.P.S. STATION POINT NO. 219 AND G.P.S. STATION POINT NO. 169 PER R.O.S. 14492 AS SHOWN HEREON.

THE BEARING FROM G.P.S. STATION POINT NO. 219 TO G.P.S. STATION POINT NO. 169 IS S 33°47'10" W.

QUOTED BEARINGS FROM REFERENCE MAPS OR DEEDS MAY OR MAY NOT BE IN TERMS OF SAID SYSTEM.

THE COMBINED GRID FACTOR AT G.P.S. STATION POINT NO. 169 IS 0.99999165

GRID DISTANCE = GROUND DISTANCE X COMBINED GRID FACTOR

ELEVATION AT G.P.S. STATION POINT NO. 169 IS 395.56' NAVD 88

RANCHO MISSION OF SAN DIEGO
C.C.S. 348
POR. OF LOT 67

CITY ENG. DWG. NO. 12903-1D

CITY DWG. NO. 14985-B

RANCHO MISSION OF SAN DIEGO
C.C.S. 348
POR. OF LOT 67

(N 86°42'15" E
226.07' MAP 2686)
S 87°07'58" W
226.07'

N 89°28'29" W 891.06'
(N 89°27'40" W 890.80' E1 & E2 CALC)

SE COR.
"PAR. 1 - STREET EASEMENT" PER E1

RANCHO MISSION OF SAN DIEGO
C.C.S. 348
POR. OF LOT 21

P.O.B.
NE COR. LOT 21 OF RANCHO MISSION OF SAN DIEGO AS SHOWN ON ROS 24108

LA MESA COLONY
MAP 346
POR. LOT 1

MTS RIGHT-OF-WAY

ROS 24108
ROS 23861

WEST FALLS VIEW DRIVE

COLLWOOD MANOR
MAP 2686

76

62

60

59

58

57

56

55

54

53

52

51

50

104

105

106

107

108

109

110

111

112

113

ROS 7776

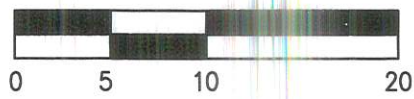
EXHIBIT "B"

LEGEND

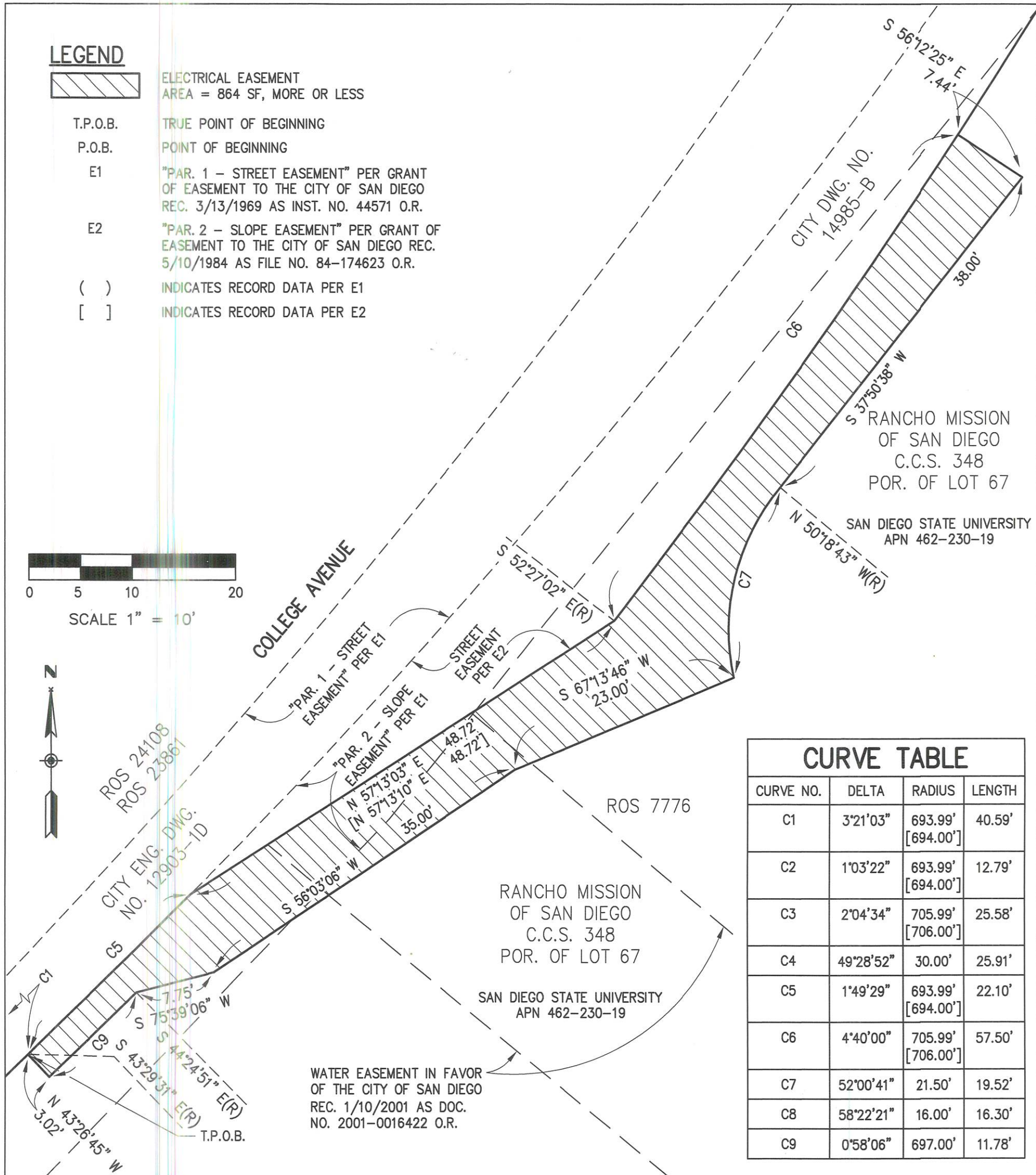


ELECTRICAL EASEMENT
AREA = 864 SF, MORE OR LESS

- T.P.O.B. TRUE POINT OF BEGINNING
 P.O.B. POINT OF BEGINNING
 E1 "PAR. 1 - STREET EASEMENT" PER GRANT OF EASEMENT TO THE CITY OF SAN DIEGO REC. 3/13/1969 AS INST. NO. 44571 O.R.
 E2 "PAR. 2 - SLOPE EASEMENT" PER GRANT OF EASEMENT TO THE CITY OF SAN DIEGO REC. 5/10/1984 AS FILE NO. 84-174623 O.R.
 () INDICATES RECORD DATA PER E1
 [] INDICATES RECORD DATA PER E2



SCALE 1" = 10'



CURVE TABLE

CURVE NO.	DELTA	RADIUS	LENGTH
C1	3°21'03"	693.99' [694.00']	40.59'
C2	1°03'22"	693.99' [694.00']	12.79'
C3	2°04'34"	705.99' [706.00']	25.58'
C4	49°28'52"	30.00'	25.91'
C5	1°49'29"	693.99' [694.00']	22.10'
C6	4°40'00"	705.99' [706.00']	57.50'
C7	52°00'41"	21.50'	19.52'
C8	58°22'21"	16.00'	16.30'
C9	0°58'06"	697.00'	11.78'

AGUIRRE & ASSOCIATES
8363 CENTER DRIVE, SUITE 5A
LA MESA CA 91942 (619) 464-6978



Joel D. Riipinen 8/10/22
JOEL D. RIIPINEN L.S. 7942 DATE

DOCUMENT No. 2023-0107909, O.R.
RECORDED APRIL 25, 2023

ELECTRICAL EASEMENT

OVER THAT PORTION OF LOT 67 OF RANCHO MISSION OF SAN DIEGO, IN THE CITY OF SAN DIEGO, COUNTY OF SAN DIEGO, STATE OF CALIFORNIA, ACCORDING TO PARTITION MAP ON FILE IN THE OFFICE OF THE COUNTY CLERK OF SAN DIEGO COUNTY IN ACTION NO. 348 IN SUPERIOR COURT OF SAID COUNTY

DESCRIPTION	BY	APPROVED	DATE	FILMED	CITY OF SAN DIEGO, CALIFORNIA	PRJ 1041121
ORIGINAL	JR				SHEET 2 OF 3 SHEETS	I.O. N/A
					<i>Joel D. Riipinen</i> FOR CITY LAND SURVEYOR	1858-6305 CCS 83 COORDINATES
					DATE <u>4/25/2023</u>	220-1747 NAD 27 COORDINATES
						100085-2-B
STATUS						

EXHIBIT "B"

NON-PLOTTABLE EASEMENTS

ROW FOR PIPE LINES AND AQUEDUCTS OF THE SAN DIEGO FLUME CO. AS PROVIDED IN AGREEMENT BETWEEN SAN DIEGO FLUME COMPANY AND JUNIPERO LAND AND WATER CO., REC. 5/23/1887 IN BK. 99, PG. 466 OF DEEDS. (QUITCLAIMED BY THE CITY OF SAN DIEGO AND HELIX WATER DISTRICT IN VARIOUS DOCUMENTS)

ROAD EASEMENT IN FAVOR OF THE SAN DIEGO COUNTY REC. 5/5/1950 IN BK. 3610 PG. 222 AS INST. NO. 50964 O.R. TOGETHER WITH THE PRIVILEGE AND RIGHT TO EXTEND DRAINAGE STRUCTURES AND SLOPES BEYOND THE LIMITS OF THE ROAD EASEMENT.

AN UNRECORDED AGREEMENT OF TRANSFER TO DIV. OF HWYS. DATED 9/29/1958 ON FILE AS PAR. NO. 8053 IN THE OFFICE OF THE DISTRICT ENG., STATE DIVISION OF HIGHWAYS DISTRICT XI, SAN DIEGO CALIFORNIA AS DISCLOSED IN AGREEMENT RECORDED OCTOBER 4, 1960 AS INSTRUMENT NO. 198774, OF OFFICIAL RECORDS AND AN UNRECORDED DRAINAGE EASEMENT SHOWN AS PARCEL NO. 8053-4 DISCLOSED IN SAID AGREEMENT.

A UTILITY EASEMENT IN FAVOR OF SDG&E REC. 1/11/1961 AT FILE PG. NO. 5302 O.R.

A METER ACCESS EASEMENT IN FAVOR OF SDG&E REC. 4/22/2004 AS INST. NO. 2004-0351341 O.R. COVERS PEDESTRIAN AND ELECTRICAL EASEMENT AREA.

MEMORANDUM OF INSTR. REC. 10/10/1985 AS DOC. NO. 85-377187 O.R. IN FAVOR OF COX CABLE ALLOWING COX TO INSTALL AND SERVICE A CABLE SYSTEM AND EXCLUSIVE RIGHT FOR ACCESS TO THE PREMISES FOR MAINTENANCE COVERS PEDESTRIAN AND ELECTRICAL EASEMENT AREA.

MEMORANDUM OF AGREEMENT IN FAVOR OF PACIFIC BELL WIRELESS D/B/A CINGULAR WIRELESS GRANTING PERMISSION TO USE PREMISES TOGETHER WITH ACCESS RIGHTS REC. 9/28/2004 AS DOC. NO. 2004-0919668 O.R. EXPIRES 5 YEARS AFTER START OF CONSTRUCTION WITH THE OPTION TO EXTEND FOR 3 ADDITIONAL TERMS OF 5 YEARS EACH COVERS PEDESTRIAN AND ELECTRICAL EASEMENT AREA.

AGUIRRE & ASSOCIATES
8363 CENTER DRIVE, SUITE 5A
LA MESA CA 91942 (619) 464-6978



Joel D. Riipinen 8/10/22
JOEL D. RIIPINEN L.S. 7942 DATE

DOCUMENT No. 2023-0107909 O.R.

RECORDED APRIL 25, 2023

ELECTRICAL EASEMENT

OVER THAT PORTION OF LOT 67 OF RANCHO MISSION OF SAN DIEGO, IN THE CITY OF SAN DIEGO, COUNTY OF SAN DIEGO, STATE OF CALIFORNIA, ACCORDING TO PARTITION MAP ON FILE IN THE OFFICE OF THE COUNTY CLERK OF SAN DIEGO COUNTY IN ACTION NO. 348 IN SUPERIOR COURT OF SAID COUNTY

DESCRIPTION	BY	APPROVED	DATE	FILMED	CITY OF SAN DIEGO, CALIFORNIA	PRJ 1041121
ORIGINAL	JR				SHEET 3 OF 3 SHEETS	I.O. <u>N/A</u>
					<i>Timothy R. KD</i> FOR CITY LAND SURVEYOR	<u>1858-6305</u> CCS 83 COORDINATES
					DATE <u>4/25/2023</u>	<u>220-1747</u> NAD 27 COORDINATES
					STATUS	<u>100085-3-B</u>