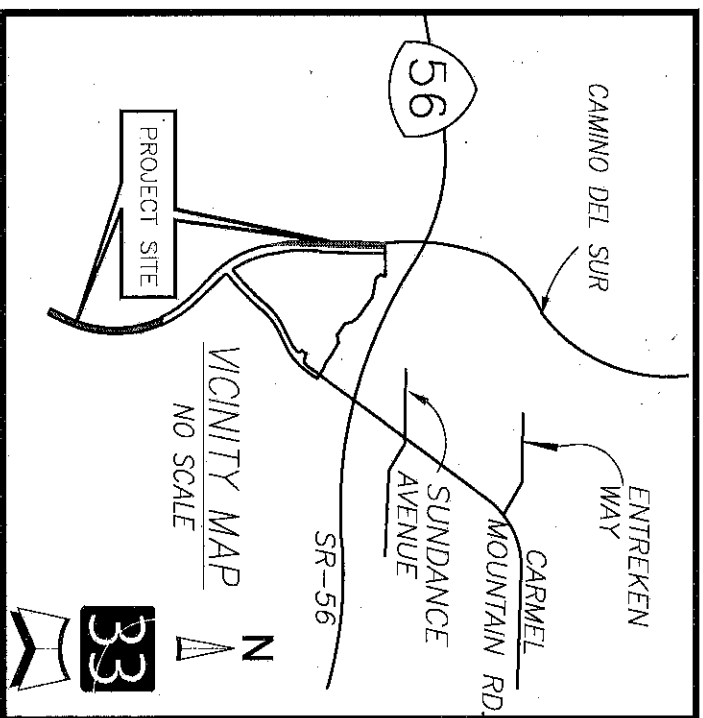


# EXHIBIT "B"



ASSESSOR'S PARCEL NO.'S  
306-050-18 AND 306-050-28

REFERENCE DRAWINGS  
MAP 12026 ROS 15686  
MAP 13309 RESO. R-308565  
MAP 15578 DOC. 1996-0157316  
MAP 16433 DOC. 2014-0080890  
MAP 16457 IMP. PLANS 40590-D

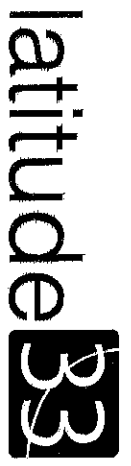
BASIS OF BEARINGS  
THE BASIS OF BEARINGS FOR THIS DRAWING IS THE WESTERLY SUBDIVISION BOUNDARY LINE OF MAP 15578, ALSO BEING A PORTION OF THE WESTERLY ROW LINE OF CAMINO DEL SUR AS DEDICATED PER SAID MAP.  
I.E. NORTH 01° 46' 15" EAST

EASEMENTS

- (A) ELECTRICAL EASEMENT GRANTED TO THE CITY OF SAN DIEGO PER DOCUMENT NO. 2003-0137735 REC. FEB. 06, 2003, O.R.
- (B) ROAD AND PUBLIC UTILITIES EASEMENT GRANTED TO GLEN R. HENDERSON AND DOROTHY L. HENDERSON PER DOCUMENT NO. 215890 RECORDED OCT. 19, 1959, O.R.
- (C) ROAD AND PUBLIC UTILITIES EASEMENT GRANTED TO JOHN C. BALLINGER AND EVELYN M. BALLINGER PER DOCUMENT NO. 5527 RECORDED JAN. 11, 1957, O.R.
- (D) PUBLIC UTILITIES EASEMENT GRANTED TO SAN DIEGO GAS & ELECTRIC COMPANY PER DOCUMENT NO. 208395 RECORDED OCT. 8, 1959, O.R.
- (E) DRAINAGE EASEMENT GRANTED TO THE CITY OF SAN DIEGO PER MAP NO. 13309

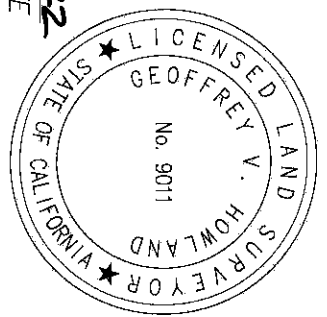
LEGEND

- INDICATES SECTION/OWNERSHIP LINE
- INDICATES RIGHT-OF-WAY LINE
- - - INDICATES SUBDIVISION BOUNDARY
- - - INDICATES LOT LINE
- ▨ INDICATES PUBLIC STREET EASEMENT, ACQUIRED PARCEL 'A': 27,327 S.F. (0.627 AC.) PARCEL 'B': 14,460 S.F. (0.332 AC.)
- P.O.B. INDICATES POINT OF BEGINNING
- ( ) INDICATES REC. DATA PER MAP NO. 15578
- < > INDICATES REC. DATA PER MAP NO. 13309
- [ ] INDICATES REC. DATA PER MAP NO. 16433
- { } INDICATES REC. DATA PER MAP NO. 16457
- (( )) INDICATES REC. DATA PER ROS NO. 15686



**Latitude 33**  
**PLANNING & ENGINEERING**  
9968 Hilbert Street, 2nd Floor, San Diego, CA 92131  
Tel 858.751.0633

*Geoffrey V. Howland*  
3/29/2022  
GEOFFREY V. HOWLAND, LS 9011  
DATE



## PUBLIC STREET EASEMENT

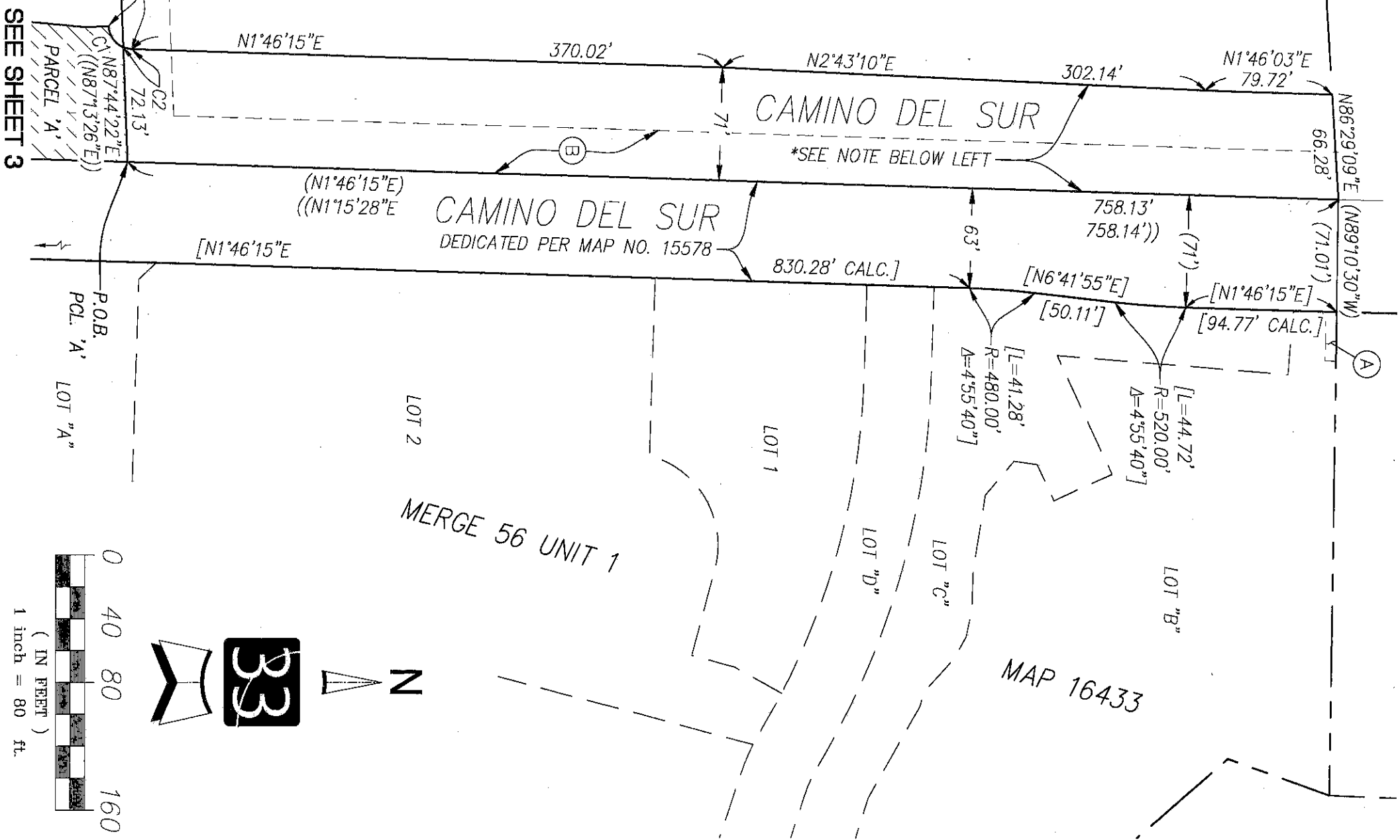
PORTIONS OF THE S.E. 1/4 OF N.E. 1/4 OF S.E. 1/4 OF SECTION 14,  
TOWNSHIP 14 SOUTH, RANGE 3 WEST, S.B.M.

DESCRIPTION	BY	APPROVED	DATE	FILED	CITY OF SAN DIEGO, CALIFORNIA DEVELOPMENT SERVICES DEPARTMENT SHEET 1 OF 4 SHEETS	PRJ. NO. 1044931
ORIGINAL	LAT33					I.O. NO. N/A
		A.N.	5/18/2022		FOR CITY LAND SURVEYOR	1926-6283 CCS '83 COORDINATES
					DATE	286-1723 LAMBERT COORDINATES
<b>COMPLETED</b>						100109-B
					STATUS	

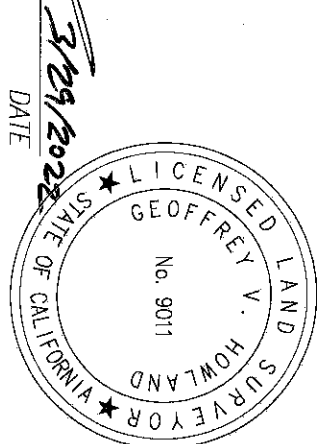
CURVE TABLE			
NO.	LENGTH	RADIUS	DELTA
C1	17.13'	15.00'	65°26'09"
C2	5.37'	15.00'	20°31'40"

N.E. 1/4 N.E. 1/4  
S.E. 1/4 SEC. 14  
T.14S. R.3W.  
APN 306-050-05

**\*CAMINO DEL SUR NOTE**  
RESOLUTION NO. R-308565, DATED NOVEMBER 21, 2013 APPROVED THE ACQUISITION OF PROPERTY TO THE CITY OF SAN DIEGO FOR CONSERVATION AND ROADWAY PURPOSES. SAID DOCUMENT DOES NOT DESCRIBE A SPECIFIC LOCATION FOR THAT ROADWAY. CAMINO DEL SUR RIGHT-OF-WAY LIMITS OVER SAID CITY PROPERTY ARE SHOWN HEREON FOR INFORMATIONAL PURPOSES.



**latitude 33**  
PLANNING & ENGINEERING  
9968 Hilbert Street, 2<sup>nd</sup> Floor, San Diego, CA 92131  
Tel: 858.751.0533



DOCUMENT NO.: 2022-0215859  
RECORDED: May 19, 2022  
DATE: 3/29/2022

**PUBLIC STREET EASEMENT**  
PORTIONS OF THE S.E. 1/4 OF N.E. 1/4 OF S.E. 1/4 OF SECTION 14,  
TOWNSHIP 14 SOUTH, RANGE 3 WEST, S.B.M.

DESCRIPTION	BY	APPROVED	DATE	FILED
ORIGINAL	LAT33			
		A.N. S/N/A		

CITY OF SAN DIEGO, CALIFORNIA DEVELOPMENT SERVICES DEPARTMENT SHEET 2 OF 4 SHEETS		FOR CITY LAND SURVEYOR	DATE
		<i>Geoffrey V. Howland</i>	5/18/2022

PRJ. NO. 1044931	1926-6283
L.O. NO. N/A	CCS '83 COORDINATES
	286-1723
	LAMBERT COORDINATES
100109-B	

COMPLETE

STATUS

NE. 1/4 NE. 1/4  
SE. 1/4 SEC. 14  
T.14S. R.3W.  
APN 306-050-05

S67'42'05"E (R)

SEE SHEET 2

72.13'

758.13' (S1'46'15"W)

LOT 2

LOT "A"

MAP 16433

P.O.B. PCL. 'A'  
NE. CORNER OF THE NE. 1/4  
OF SE. 1/4 OF NE. 1/4 OF  
SE. 1/4 OF SEC. 14.

N2'15'56"W 15.00'

N5'27'22"E 50.46'

N2'15'56"W 15.00'

N.E. 1/4 S.E. 1/4

N.E. 1/4 S.E. 1/4

SEC. 14 T.14S. R.3W.

APN 306-050-28

POINT 'A'

P.O.B. PCL. 'B'

NE. CORNER OF THE S.E. 1/4  
OF S.E. 1/4 OF NE. 1/4 OF  
SE. 1/4 OF SEC. 14.

S89'41'36"W (R)

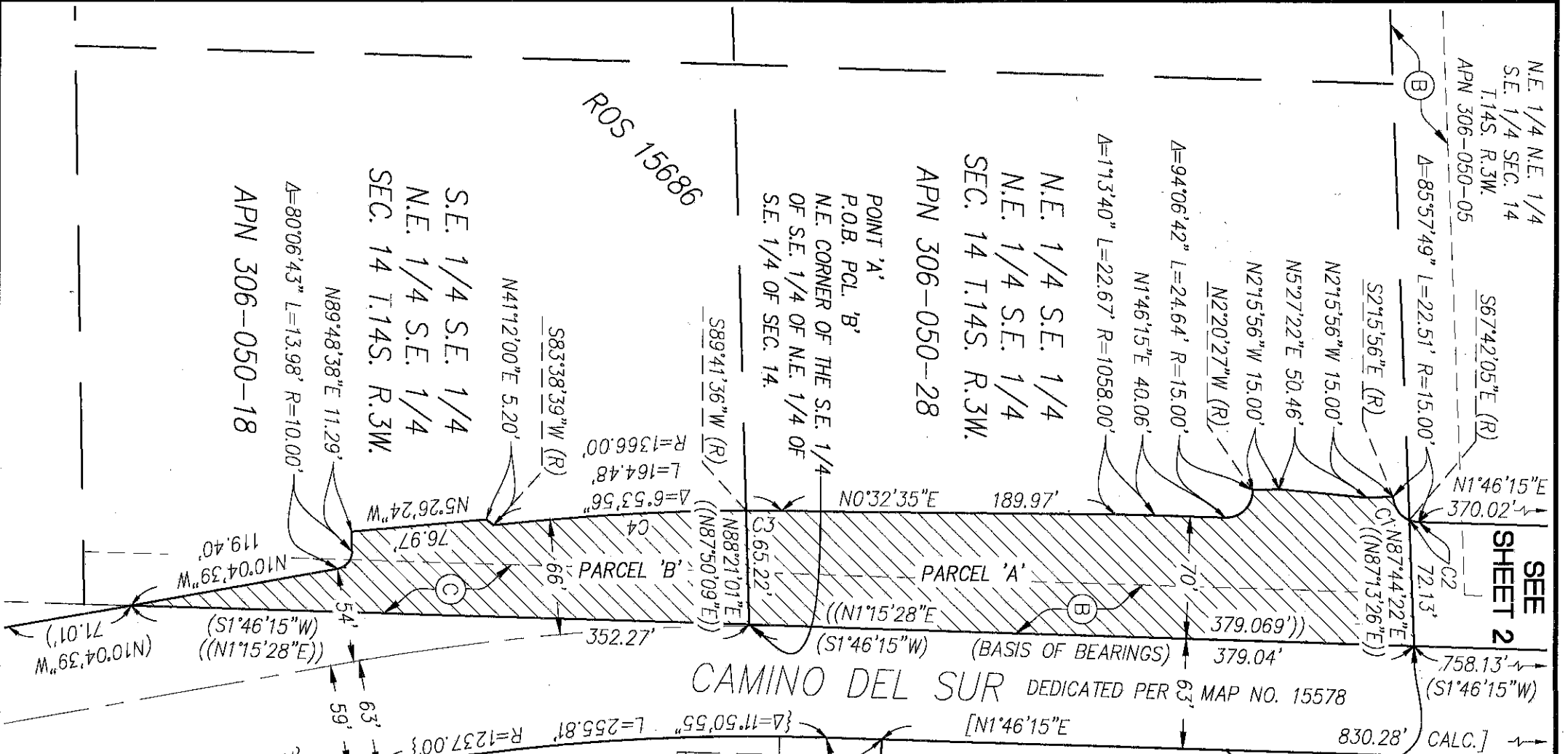
S83'38'39"W (R)

ROS 15686

N41'12'00"E 5.20'

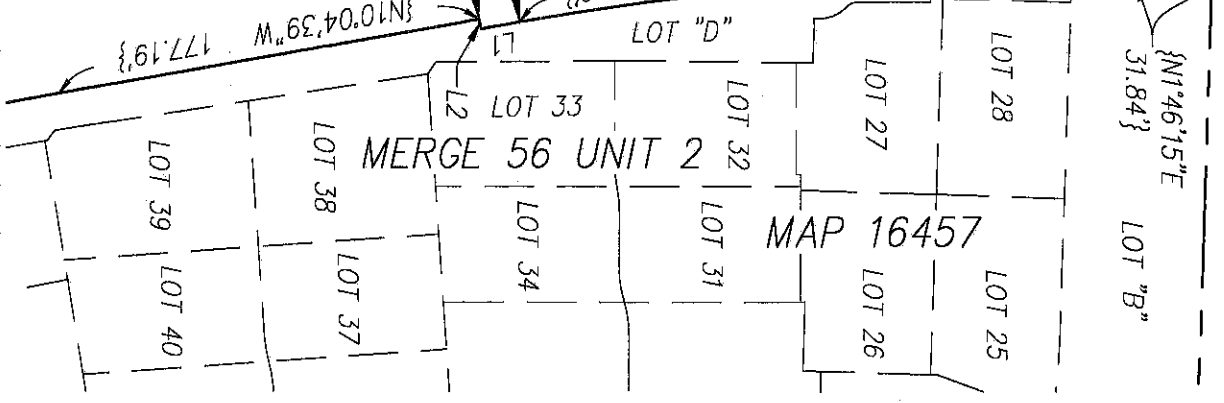
SE. 1/4 S.E. 1/4  
N.E. 1/4 S.E. 1/4  
SEC. 14 T.14S. R.3W.

N89'48'38"E 11.29'  
A=80'06'43" L=13.98' R=10.00'  
APN 306-050-18



CURVE TABLE			
NO.	LENGTH	RADIUS	DELTA
C1	17.13'	15.00'	65°26'09"
C2	5.37'	15.00'	20°31'40"
C3	20.26'	1366.00'	0°50'59"
C4	144.22'	1366.00'	6°02'57"

LINE TABLE		
NO.	BEARING	LENGTH
L1	{N10°04'39"W}	{16.32'}
L2	{N79°55'21"E}	{4.00'}

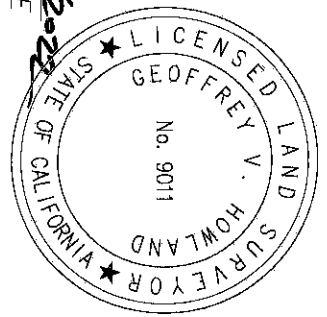


**Latitude 33**  
PLANNING & ENGINEERING

9968 Hilbert Street, 2<sup>nd</sup> Floor, San Diego, CA 92131  
Tel 858.751.0533

GEOFFREY V. HOWLAND, LS 9011

DATE 3/29/2022



DOCUMENT NO.: 2022-0215859  
RECORDED: May 19, 2022

**PUBLIC STREET EASEMENT**  
PORTIONS OF THE S.E. 1/4 OF NE. 1/4 OF S.E. 1/4 OF SECTION 14,  
TOWNSHIP 14 SOUTH, RANGE 3 WEST, S.B.M.

DESCRIPTION	BY	APPROVED DATE	FILMED
ORIGINAL	LAT33		

CITY OF SAN DIEGO, CALIFORNIA  
DEVELOPMENT SERVICES DEPARTMENT  
SHEET 3 OF 4 SHEETS

PRJ. NO. 1044931  
I.O. NO. N/A

FOR CITY LAND SURVEYOR DATE 5/18/2022

1926-6283  
CCS '83 COORDINATES

286-1723  
LAMBERT COORDINATES

COMPLETED

STATUS

100109-B

