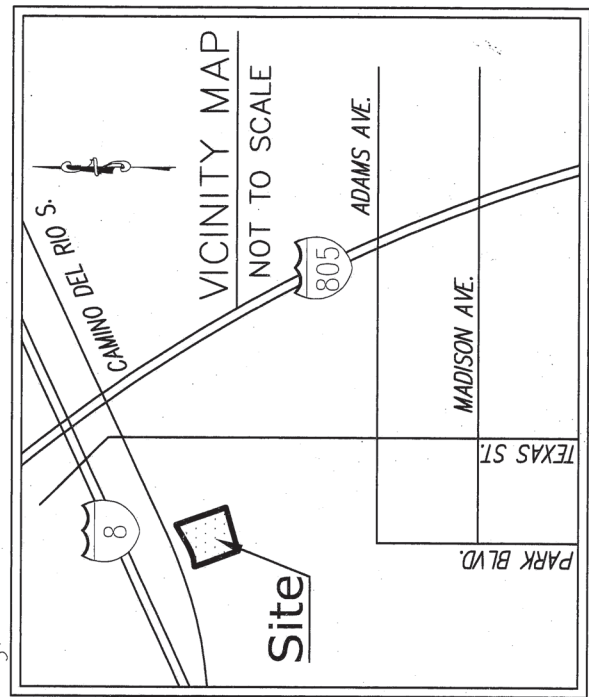
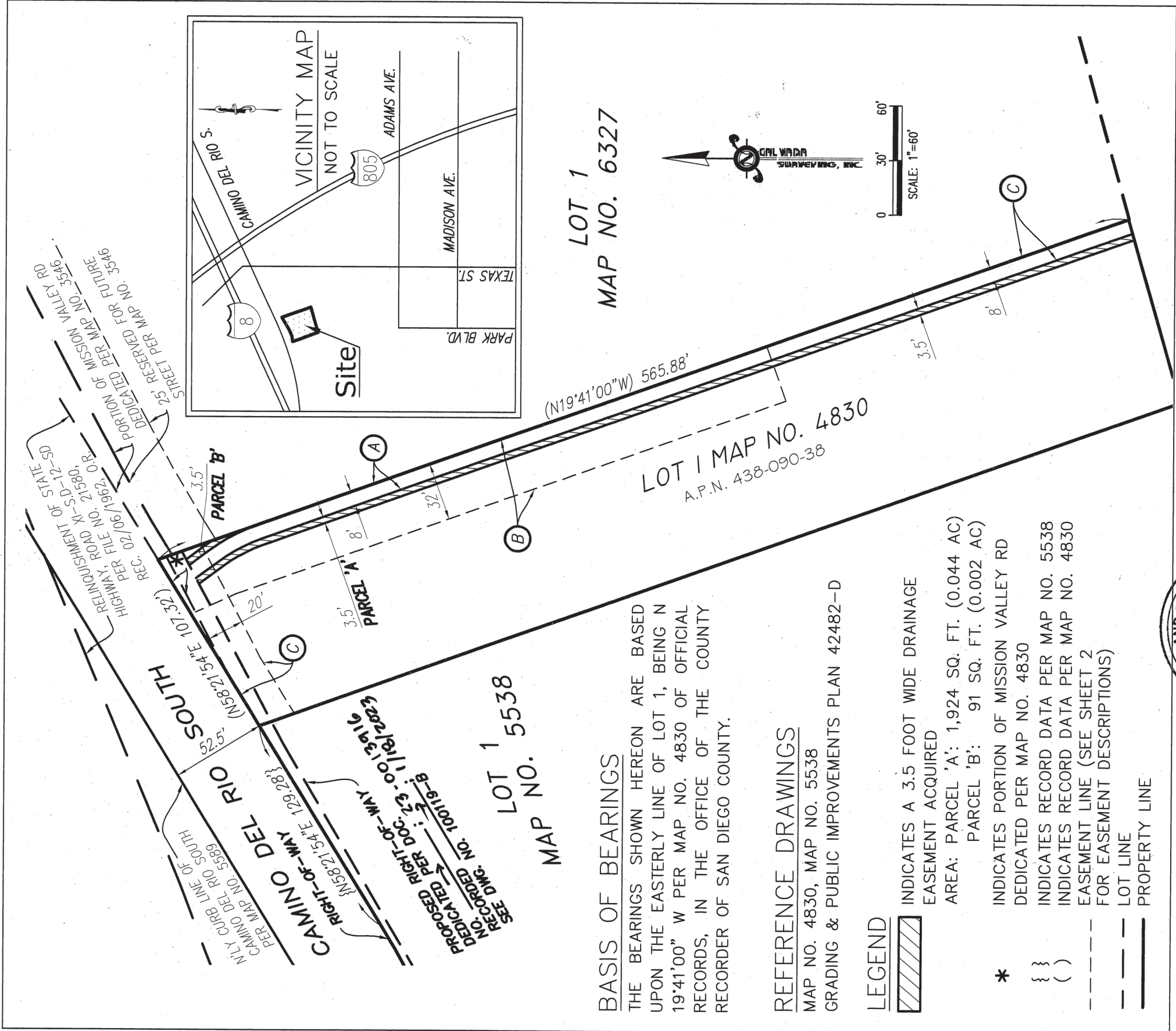


**EXHIBIT B**



**LOT 1  
MAP NO. 6327**

**LOT 1 MAP NO. 4830  
A.P.N. 438-090-38**



**BASIS OF BEARINGS**

THE BEARINGS SHOWN HEREON ARE BASED UPON THE EASTERLY LINE OF LOT 1, BEING N 19°41'00" W PER MAP NO. 4830 OF OFFICIAL RECORDS, IN THE OFFICE OF THE COUNTY RECORDER OF SAN DIEGO COUNTY.

**REFERENCE DRAWINGS**

MAP NO. 4830, MAP NO. 5538  
GRADING & PUBLIC IMPROVEMENTS PLAN 42482-D

**LEGEND**

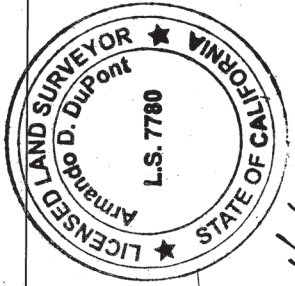
- INDICATES A 3.5 FOOT WIDE DRAINAGE EASEMENT ACQUIRED
- AREA: PARCEL 'A': 1,924 SQ. FT. (0.044 AC)  
PARCEL 'B': 91 SQ. FT. (0.002 AC)
- \* INDICATES PORTION OF MISSION VALLEY RD DEDICATED PER MAP NO. 4830
- { } INDICATES RECORD DATA PER MAP NO. 5538
- ( ) INDICATES RECORD DATA PER MAP NO. 4830
- EASEMENT LINE (SEE SHEET 2 FOR EASEMENT DESCRIPTIONS)
- - - LOT LINE
- PROPERTY LINE

**CAL VADA**  
**SURVEYING, INC.**

411 Jenks Ct., Suite 205, Corona, CA 92880  
Phone: 951-280-9960 Fax: 951-280-9778  
Toll Free: 800-CALVADA www.calvada.com

*Armando D. Dupont*  
ARMANDO D. DUPONT

P.L.S. 7780 1/6/23  
JOB NO. 21622-1



DOCUMENT No. \_\_\_\_\_  
RECORDED \_\_\_\_\_

**DRAINAGE EASEMENT DEDICATION**

LOT 1 OF MAP NO. 4830

DESCRIPTION	BY	APPROVED DATE	FILMED	CITY OF SAN DIEGO, CALIFORNIA	PTS I.O.
				SHEET 1 OF 2 SHEET	PRJ-1045610 N/A
				<i>Armando D. Dupont</i> FOR CITY LAND SURVEYOR	1838-6283 NAD 83 COORDINATES
				DATE	218-1723 LAMBERT COORDINATES
				STATUS	100120-1-B

# EXHIBIT B

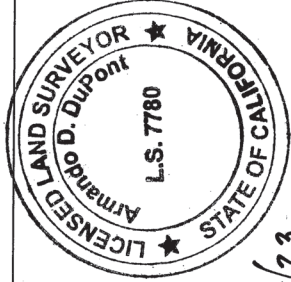
## EASEMENT NOTES

- (A) EXISTING 8' WIDE EASEMENT GRANTED TO THE CITY OF SAN DIEGO, PER MAP NO. 4830, FILED IN THE OFFICE OF THE COUNTY RECORDER OF SAN DIEGO COUNTY, AUGUST 16, 1961. SAID DOCUMENT CONTAINS CERTAIN TERMS AND PROVISIONS FOR AN EASEMENT FOR DRAINAGE AND INCIDENTAL PURPOSES. SAID EASEMENT IS PLOTTED HEREON. REFERENCE IS MADE TO THE SUBJECT MAP FOR FULL PARTICULARS.
- (B) EXISTING WATER EASEMENT GRANTED TO THE CITY OF SAN DIEGO PER DOCUMENT RECORDED 21 MAY, 1993, DOC. NO. 1993-0321533. SAID DOCUMENT CONTAINS CERTAIN TERMS AND PROVISIONS FOR WATER UTILITIES AND INCIDENTAL PURPOSES. SAID EASEMENT IS PLOTTED HEREON. REFERENCE IS MADE TO THE SUBJECT MAP FOR FULL PARTICULARS.
- (C) EXISTING 20' WIDE UTILITY EASEMENT GRANTED TO THE CITY OF SAN DIEGO PER DOCUMENT RECORDED 26 OCTOBER, 1993, DOC. NO. 1993-0717312. SAID EASEMENT IS PLOTTED HEREON. REFERENCE IS MADE TO THE SUBJECT MAP FOR FULL PARTICULARS.

**CAL VADA**  
**SURVEYING, INC.**  
 411 Jenks Cir., Suite 205, Corona, CA 92880  
 Phone: 951-280-9860  
 Toll Free: 800-CALVADA  
 Fax: 951-280-9746  
 www.calvada.com

*[Signature]*

ARMANDO D. DUPONT P.L.S. 7780 1/6/23  
 JOB NO. 21622-1



DOCUMENT No. \_\_\_\_\_  
 RECORDED \_\_\_\_\_

## DRAINAGE EASEMENT DEDICATION

LOT 1 OF MAP NO. 4830

DESCRIPTION	BY	APPROVED DATE	FILMED	CITY OF SAN DIEGO, CALIFORNIA SHEET 2 OF 2 SHEET	PTS I.O.
					PRJ-1045610 N/A
				<i>Armando D. Dupont</i> FOR CITY LAND SURVEYOR	1838-6283 NAD 83 COORDINATES
				1/18/2023 DATE	218-1723 LAMBERT COORDINATES
					100120-2-B
STATUS					