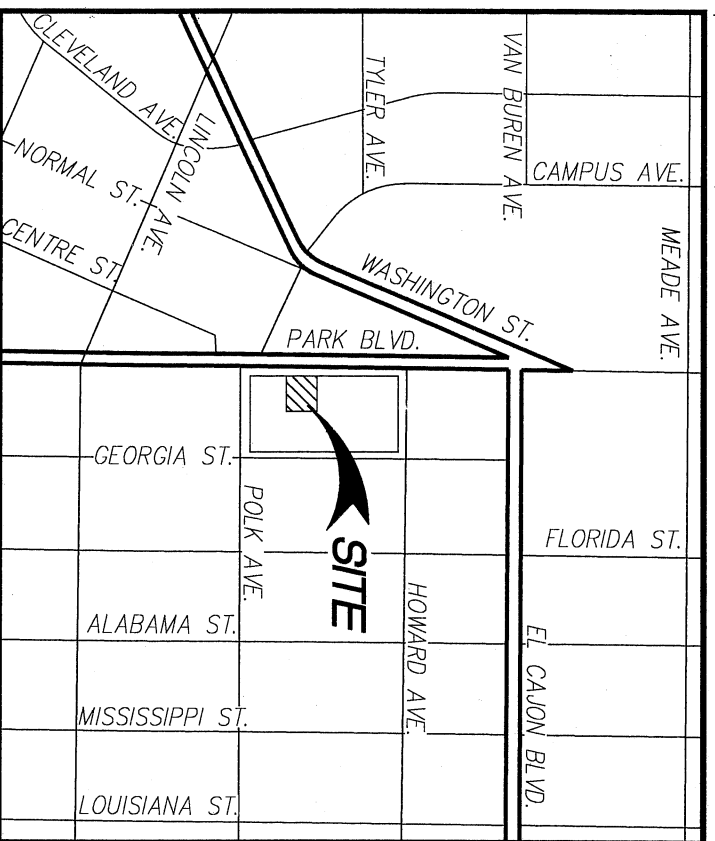
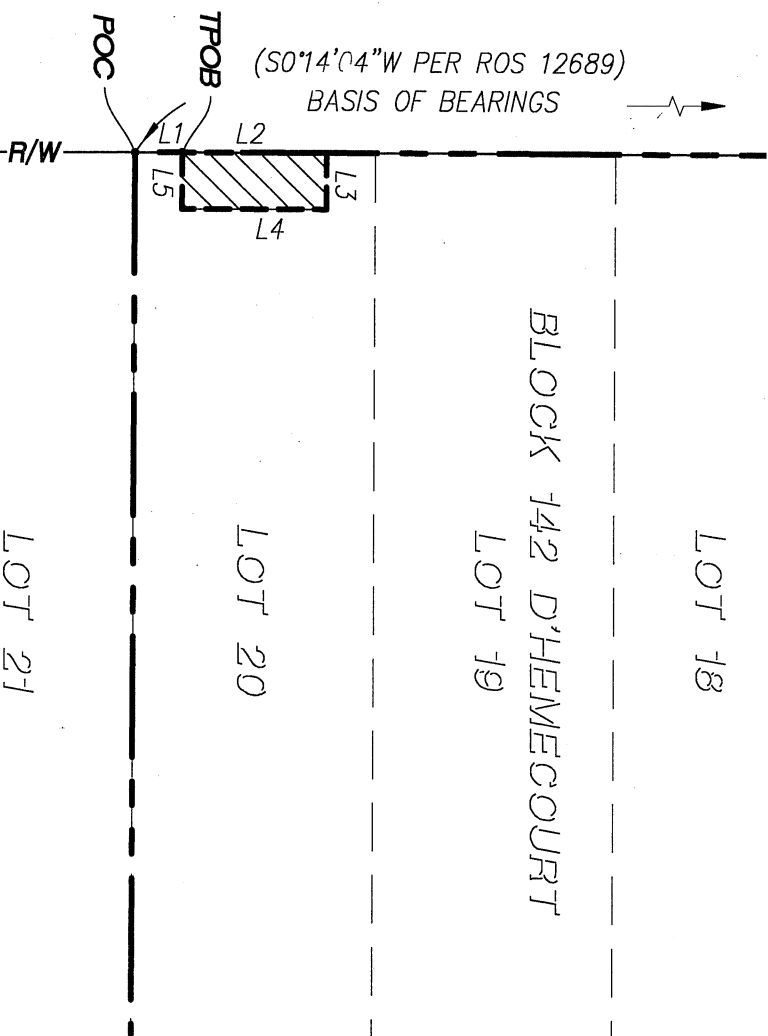


**PARK BOULEVARD**  
 DEDICATED PER MAP 558 AND AMENDED MAP THEREOF  
 MADE BY G.A. D'HEMECOURT, IN BOOK 8, PAGE 36 ET  
 SEQ. OF LIS PENDENS



**VICINITY MAP**  
 NOT TO SCALE

LINE TABLE		
NO.	LENGTH	BEARING
L1	4.91'	N00° 14' 04"E
L2	15.00'	N00° 14' 04"E
L3	5.88'	S89° 45' 56"E
L4	15.00'	S00° 14' 04"W
L5	5.88'	N89° 45' 56"W

**BASIS OF BEARINGS**

THE WEST LINE OF BLOCK 142 PER AMENDED MAP THEREOF MADE BY G.A. D'HEMECOURT, IN BOOK 8, PAGE 36 ET SEQ. OF LIS PENDENS, FILED IN THE OFFICE OF THE COUNTY RECORDER OF SAN DIEGO COUNTY

SAID WESTERLY LINE SHOWN ON RECORD OF SURVEY 12689 AS "S0°14'04"W"

**REFERENCES**

- 42462-D
- MAP 558
- ROS 12689



4960 N HARBOR DR STE 200 (619) 663 8352  
 SAN DIEGO, CA 92106 www.4c.engineering

*Dolvin Lorenzo Buchanan*  
 DOLVIN LORENZO BUCHANAN P.L.S. 9487 DATE



**WATER EASEMENT**

LOT 20 IN BLOCK 142 OF UNIVERSITY HEIGHTS ACCORDING TO AMENDED MAP THEREOF  
 MADE BY G.A. D'HEMECOURT, IN BOOK 8, PAGE 36 ET SEQ. OF LIS PENDENS



DOCUMENT No. 2022-0224434  
 RECORDED MAY 26, 2022

DESCRIPTION	BY	APPROVED	DATE	FILMED	CITY OF SAN DIEGO, CALIFORNIA	SHEET 1 OF 1 SHEET	I.O.
ORIGINAL	MF						PRJ-1050967
							1854-6283
							CCS 83 COORDINATES
							214-1723
							NAD 27 COORDINATES
<b>COMPLETE</b>					STATUS	100222-01-B	B001