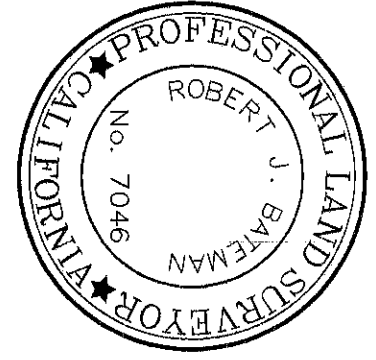
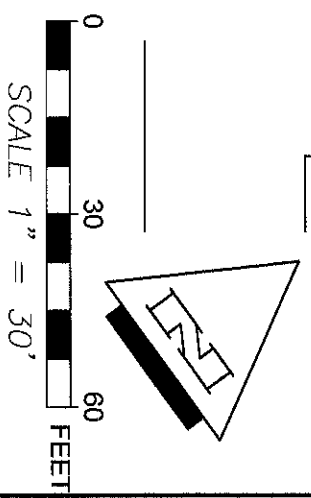
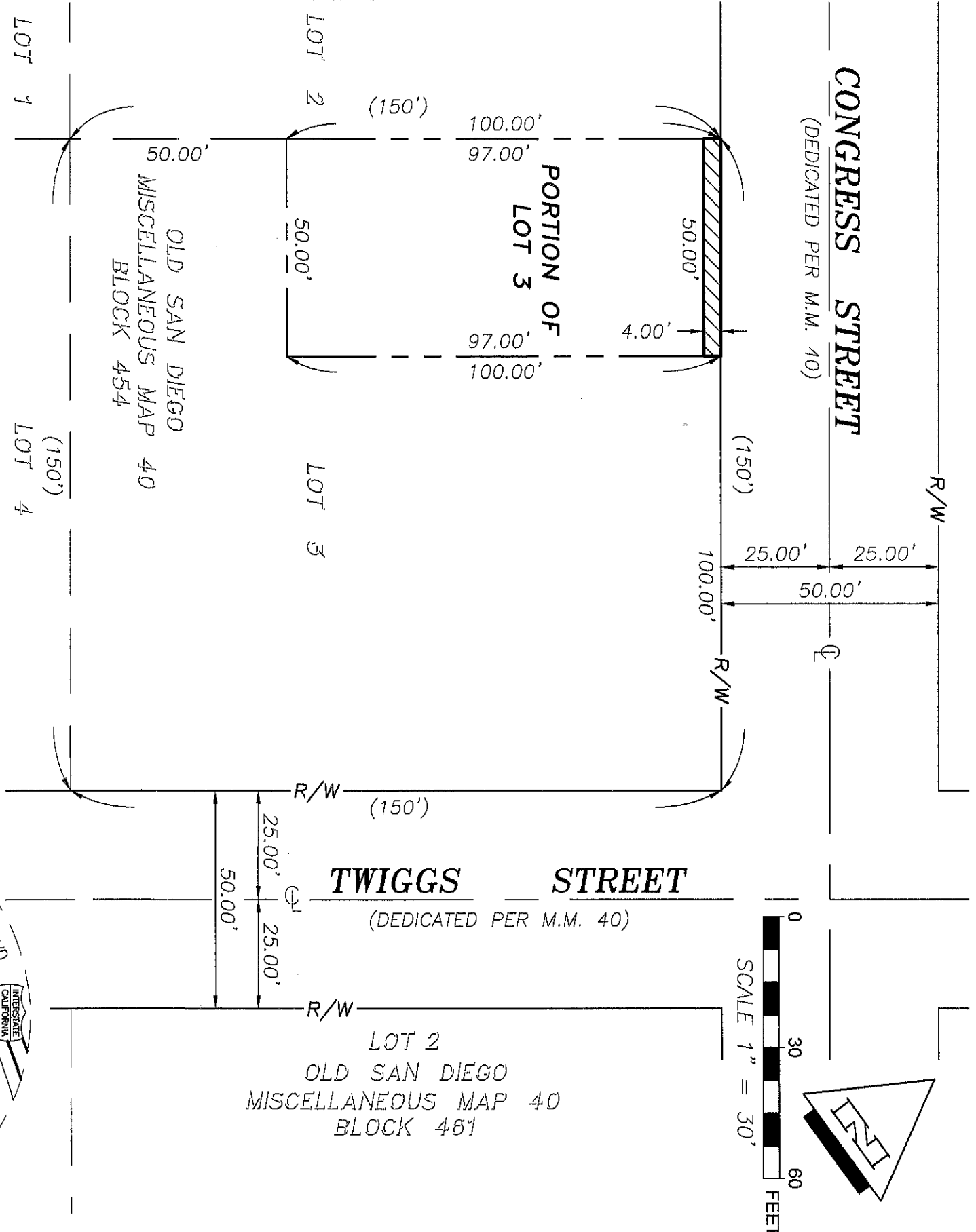
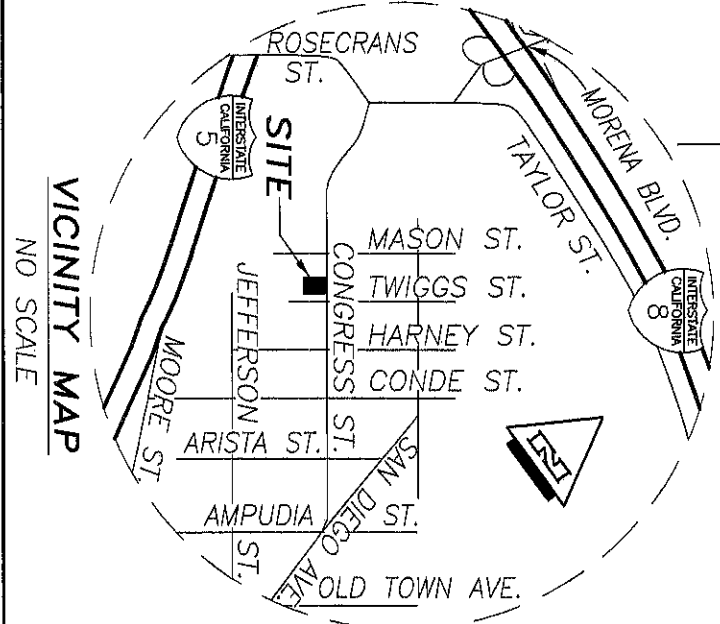


CONGRESS STREET
(DEDICATED PER M.M. 40)



LEGEND
 INDICATES IRREVOCABLE OFFER TO DEDICATE (I.O.D.)
 CONTAINS 200.0 SQ. FT. OR 0.005 ACRE
 INDICATES RECORD DATA PER M.M. NO. 40 ()
 INDICATES PROPERTY BOUNDARY _____
 INDICATES LOT LINE _____
 INDICATES RIGHT OF WAY R/W _____

REFERENCE DRAWINGS
 MISCELLANEOUS MAP NO. 40
A.P.N.
 442-570-05



SAN DIEGO LAND SURVEYING &
 ENGINEERING, INC.
 7028 CONVOY COURT
 SAN DIEGO, CA 92123 (858) 565-8362
Robert J. Bateman DATE: 4/11/2022
 ROBERT J. BATEMAN L.S. 7046

DOCUMENT NO. **2022 - 020 9367**
 RECORDED **5/14/2022**

IRREVOCABLE OFFER TO DEDICATE - STREET PURPOSES
 IN A PORTION OF LOT 3, IN BLOCK 454 OF OLD SAN DIEGO, MISCELLANEOUS MAP NO. 40

DESCRIPTION	BY	APPROVED	DATE	FILMED	CITY OF SAN DIEGO, CALIFORNIA	PROJECT NO. 1053690
ORIGINAL	SDLSE			5-18-22	SHEET 1 OF 1 SHEET	I.O. NO. N/A
					FOR CITY LAND SURVEYOR <i>David R. Kelly</i> DATE <i>5/14/2022</i>	1854-6269
						CCS 83 COORDINATES
						214-1709
						LAMBERT COORDINATES
						100274-B

Accured

STATUS

100274-B