



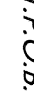
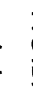



EXHIBIT "B"

LEGEND

-  SEWER EASEMENT ACQUIRED CONTAINS 1470.11± SQ. FT. OR 0.034 ACRES
-  LOT LINE
-  OFFSITE LOT LINE
-  EASEMENT LINE
-  T.P.O.B. INDICATES TRUE POINT OF BEGINNING
-  P.O.B. INDICATES POINT OF BEGINNING
-  () INDICATES RECORD DATA PER MAP 15782 (RECORD AND MEASURED ARE THE SAME)

EXISTING EASEMENT LEGEND

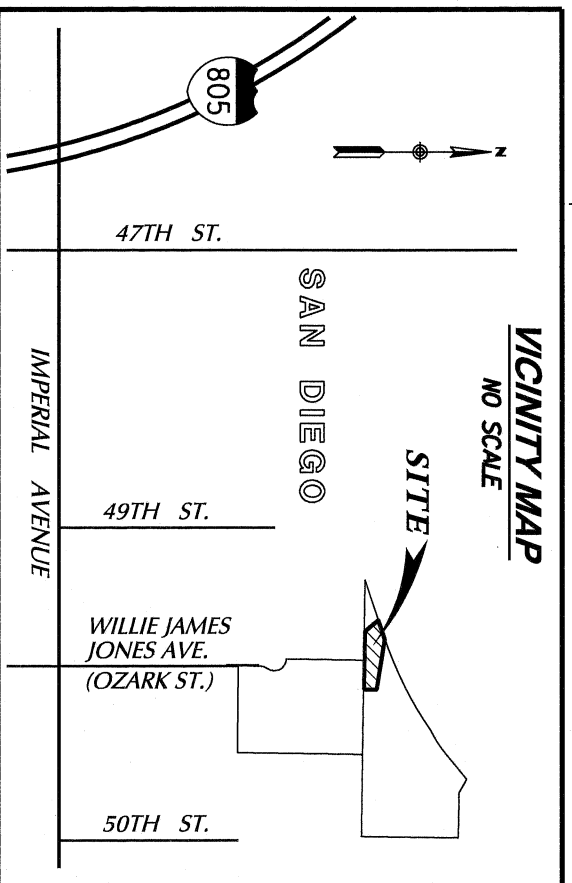
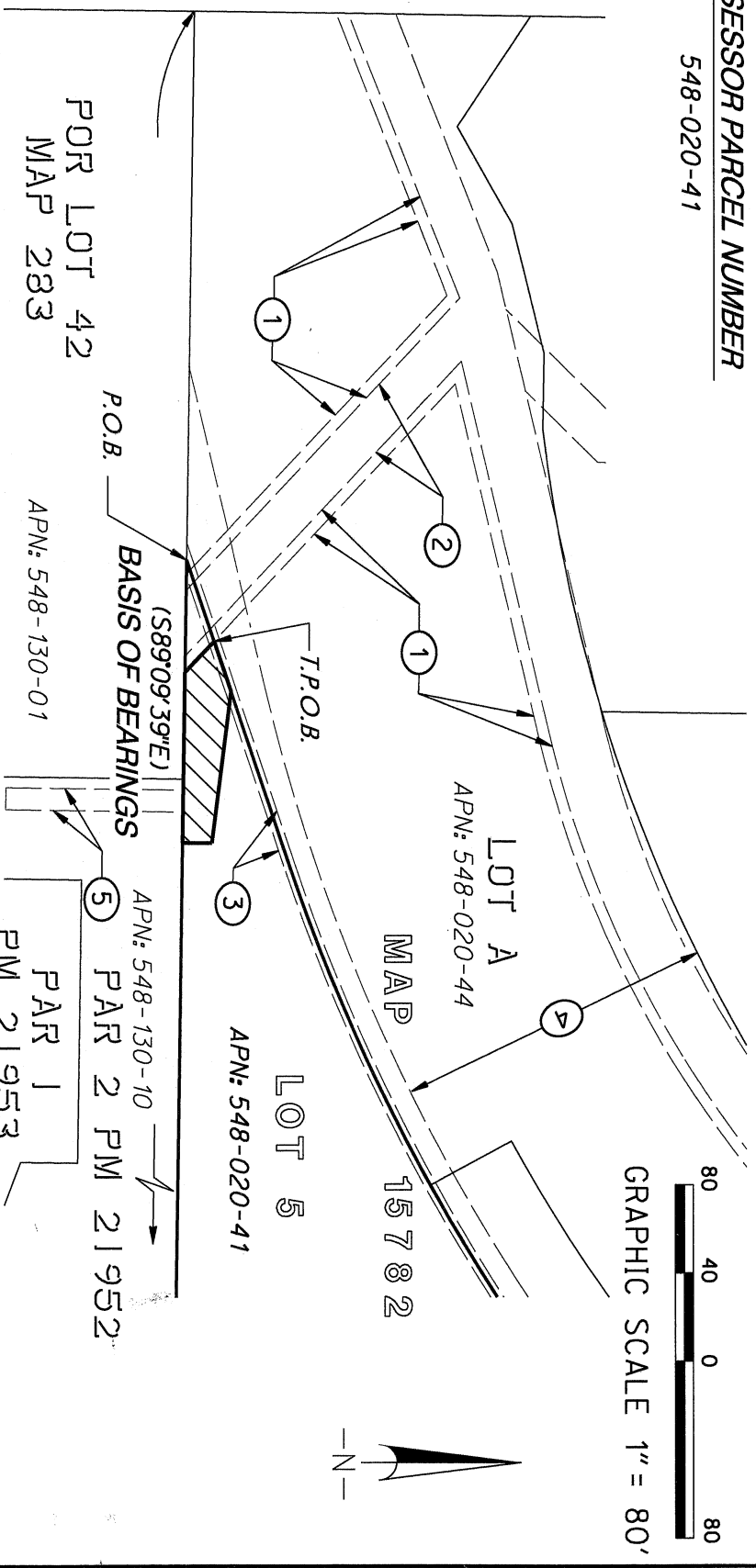
- ① SEWER EASEMENT GRANTED TO THE CITY OF SAN DIEGO PER MAP 15782
- ② WATER, SEWER AND ELECTRICAL FACILITIES EASEMENT GRANTED TO CITY OF SAN DIEGO PER DOCUMENT RECORDED AUGUST 3, 2001 AS DOC. NO. 2001-0548818, O.R. (CITY DWG. 00019-C)
- ③ PEDESTRIAN AND NON-VEHICULAR EASEMENT GRANTED TO CITY OF SAN DIEGO, RECORDED AUGUST 15, 2001, DOC. NO. 2001-0581043, O.R. (CITY DWG. 00019-C)
- ④ NATURAL FLOWAGE OF WATERS EASEMENT GRANTED TO CITY OF SAN DIEGO, RECORDED AUGUST 3, 2001, DOC. NO. 2001-0548927, O.R.
- ⑤ DRAINAGE EASEMENT GRANTED TO THE CITY OF SAN DIEGO REG. APRIL 5, 1955, DOC. NO. 508543, BK 5593, PG 560, O.R.

REFERENCE DRAWINGS

MAP 283, 15782, ROS 11255,
PM 21952 & 21953,
CITY DWG 42033-D

ASSESSOR PARCEL NUMBER

548-020-41



BASIS OF BEARINGS

THE BASIS OF BEARINGS FOR THIS SURVEY IS THE SOUTHERLY BOUNDARY OF MAP NO. 15782 SHOW HEREON AS N89°09'39"W

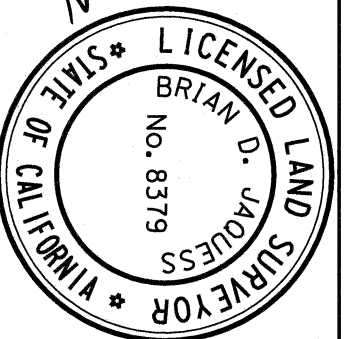
SAID BEARING AND THE BEARINGS SHOWN HEREON ARE IN TERMS OF THE CALIFORNIA COORDINATE SYSTEM, CCS83, ZONE 6.

QUOTED BEARINGS FROM REFERENCE MAPS OR DEEDS MAY OR MAY NOT BE IN TERMS OF SAID SYSTEM.

RICK
ENGINEERING COMPANY

5620 FRIARS ROAD
SAN DIEGO, CA 92110
619-291-0707
(FAX) 619-291-4165

J. 13284rrr



Brian D. Jaquess
BRIAN D. JAQUESS, LS 8379 DATE 11/4/2022

RECORDED Nov 23, 2022

DOCUMENT No. 2022-0448232

SEWER EASEMENT

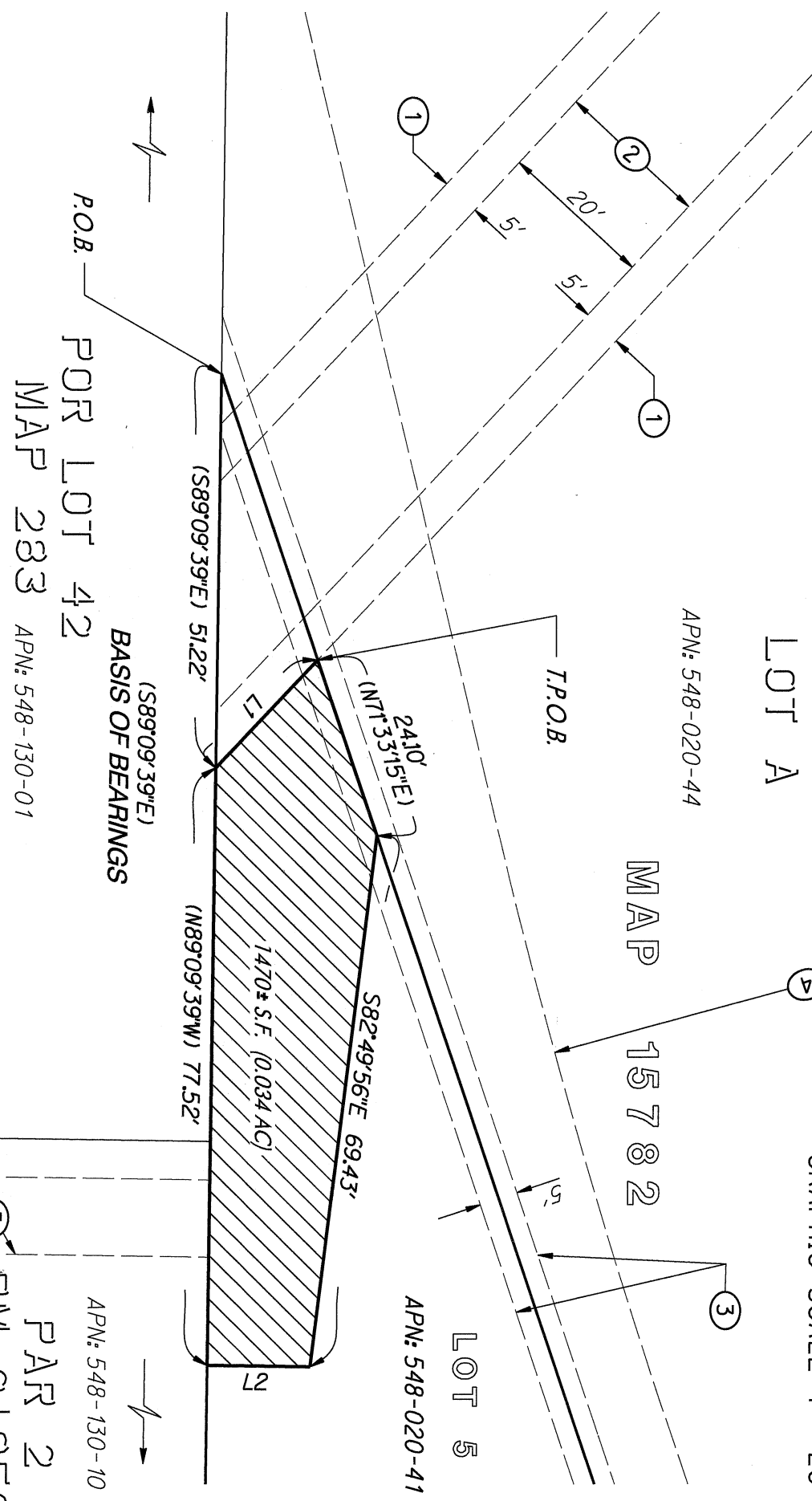
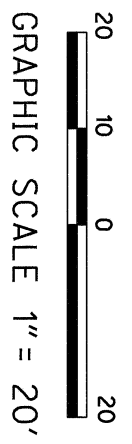
OVER A PORTION OF LOT 5 OF MAP 15782

DESCRIPTION	BY	APPROVED	DATE	FILMED	CITY OF SAN DIEGO, CALIFORNIA	PRJ
ORIGINAL	REC	<i>W. J. Jaquess</i>	5.9.	12/7/2022	SHEET 1 OF 2 SHEET	1057136
						PERMIT NO.: 3157252
						1836-6301
						CCS 83 COORDINATES
						196-1741
						NAD 27 COORDINATES
ACQUIRED					STATUS	100372-1-B
						B001

EXHIBIT "B"

LINE TABLE

NAME	DIRECTION	LENGTH
L1	(N 46° 59' 19" W)	19.26'
L2	S 00° 40' 13" W	13.24'



NON-PLOTTABLE EASEMENTS

THE FOLLOWING EXISTING EASEMENT(S) HAVE NO SPECIFIC LOCATION SET FORTH AND CANNOT BE PLOTTED:

UTILITY EASEMENT GRANTED TO SDG&E, RECORDED MAY 30, 2000 AS DOC. NO. 2000-0280828, O.R.

UTILITY EASEMENT GRANTED TO SDG&E, RECORDED NOVEMBER 21, 2000 AS DOC. NO. 2000-0634295, O.R.

UTILITY EASEMENT GRANTED TO SDG&E, RECORDED FEBRUARY 22, 2002 AS DOC. NO. 2002-0152436, O.R.

COX COMMUNICATIONS EASEMENT RECORDED MARCH 10, 2005 AS DOC. NO. 2005-0199109, O.R.

DECLARATION OF GRANT OF PRIVATE RECIPROCAL EASEMENTS RECORDED AUGUST 14, 2012 AS DOC. NO. 2012-0481957, O.R.

PRIVATE WATER, SEWER & ELECTRICAL EASEMENTS RECORDED SEPTEMBER 1, 2022 AS DOC. NO. 2022-0350222, O.R.

EASEMENTS OUTSIDE OF AREA OF CONCERN

THE FOLLOWING EXISTING EASEMENT(S) LIE OUTSIDE OF AREA OF CONCERN AND ARE NOT PLOTTED HEREON:

UTILITY EASEMENT GRANTED TO SDG&E, RECORDED JUNE 20, 2000 AS DOC. NO. 2000-0323237, O.R.

PUBLIC STREET EASEMENT GRANTED TO THE CITY OF SAN DIEGO, RECORDED AUGUST 15, 2001 AS DOC. NO. 2001-0581047, O.R. (CITY DWG. 00019-C)

SEWER ACCESS EASEMENT GRANTED TO THE CITY OF SAN DIEGO, RECORDED AUGUST 15, 2001 AS DOC. NO. 2001-0581050, O.R. (CITY DWG. 00019-C)

ACCESS & WATER EASEMENTS SHOWN ON PARCEL MAP 18812

26' WIDE ACCESS EASEMENT SHOWN ON PARCEL MAP 18812

TRICK
ENGINEERING COMPANY
5620 FRIARS ROAD
SAN DIEGO, CA 92110
619-291-0707
(FAX) 619-291-4165
J. 13284rrr

SEWER EASEMENT
OVER A PORTION OF LOT 5 OF MAP 15782

DESCRIPTION	BY	APPROVED	DATE	FILMED	CITY OF SAN DIEGO, CALIFORNIA	PRJ	
ORIGINAL	REC				SHEET 2 OF 2 SHEET	1057136	
	S.O.		12/1/2022			PERMIT NO.: 3157252	
					FOR CITY LAND SURVEYOR	1836-6301	
					DATE	CCS 83 COORDINATES	
						196-1741	
						NAD 27 COORDINATES	
ACQUIRED					STATUS	100372-2-B	B002