


# EXHIBIT "B"

## EXISTING EASEMENT LEGEND

## LEGEND

-  SEWER EASEMENT ACQUIRED CONTAINS 188,40± SQ. FT. OR 0.004 ACRES
- LOT LINE
- OFFSITE LOT LINE
- EASEMENT LINE
- T.P.O.B. INDICATES TRUE POINT OF BEGINNING
- P.O.B. INDICATES POINT OF BEGINNING
- ( ) INDICATES RECORD DATA PER MAP 15782 (RECORD AND MEASURED ARE THE SAME)

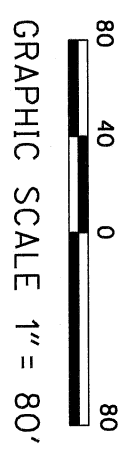
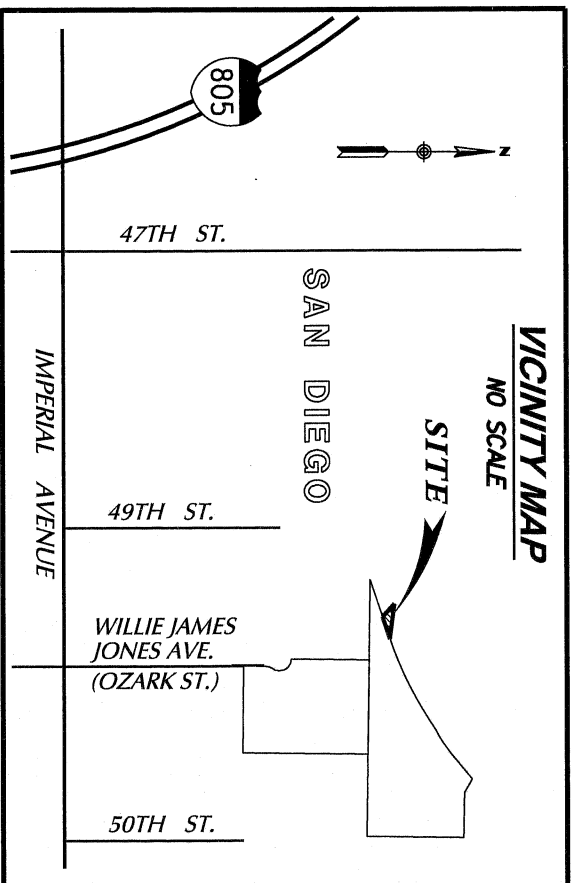
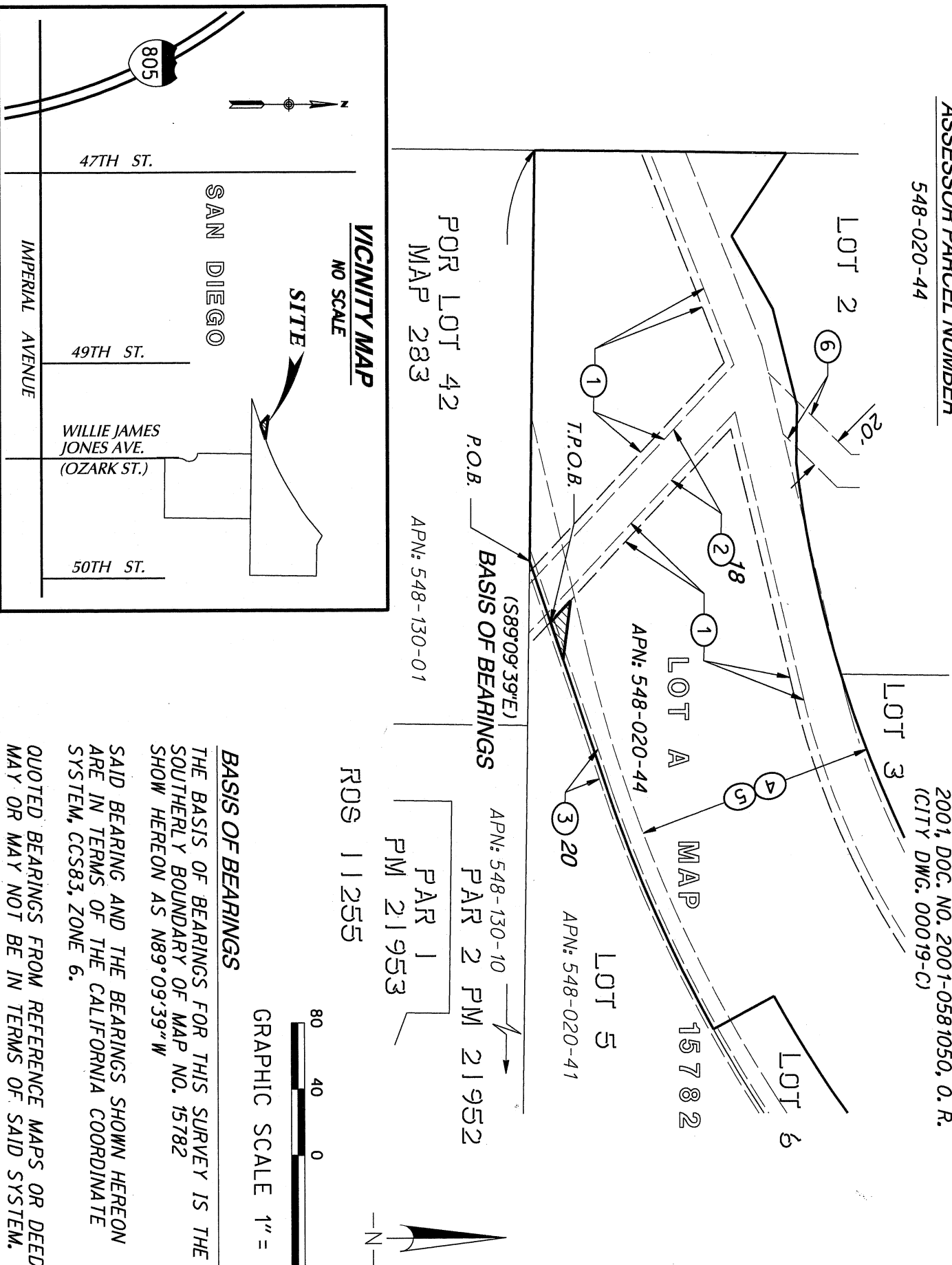
### REFERENCE DRAWINGS

MAP 283, 15782, ROS 11255  
CITY DWG 42033-D, 100372-B

### ASSESSOR PARCEL NUMBER

548-020-44

- ① 5' SEWER EASEMENT GRANTED TO THE CITY OF SAN DIEGO PER MAP 15782
- ② 20' WATER, SEWER AND ELECTRICAL FACILITIES EASEMENT GRANTED TO CITY OF SAN DIEGO RECORDED AUGUST 3, 2001, DOC. NO. 2001-0548818, O.R. (CITY DWG. 00019-C)
- ③ 5' PEDESTRIAN AND NON-VEHICULAR EASEMENT GRANTED TO CITY OF SAN DIEGO, RECORDED AUGUST 15, 2001, DOC. NO. 2001-0581043, O.R. (CITY DWG. 00019-C)
- ④ NATURAL FLOWAGE OF WATERS EASEMENT GRANTED TO CITY OF SAN DIEGO, RECORDED AUGUST 3, 2001, DOC. NO. 2001-0548927, O.R. (CITY DWG. 00019-C) (WIDTH VARIES)
- ⑤ OPEN SPACE EASEMENT GRANTED TO CITY OF SAN DIEGO RECORDED JULY 27, 2001, DOC. NO. 2001-0527167, O.R. (CITY DWG. 00030-C) (WIDTH VARIES)
- ⑥ 20' SEWER ACCESS EASEMENT GRANTED TO CITY OF SAN DIEGO RECORDED AUGUST 15, 2001, DOC. NO. 2001-0581050, O.R. (CITY DWG. 00019-C)



### BASIS OF BEARINGS

THE BASIS OF BEARINGS FOR THIS SURVEY IS THE SOUTHERLY BOUNDARY OF MAP NO. 15782 SHOW HEREON AS N89°09'39"W

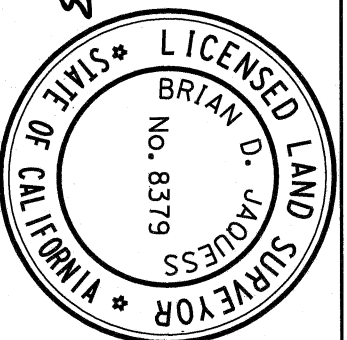
SAID BEARING AND THE BEARINGS SHOWN HEREON ARE IN TERMS OF THE CALIFORNIA COORDINATE SYSTEM, CCS83, ZONE 6.

QUOTED BEARINGS FROM REFERENCE MAPS OR DEEDS MAY OR MAY NOT BE IN TERMS OF SAID SYSTEM.



5620 FRIARS ROAD  
SAN DIEGO, CA 92110  
619-291-0707  
(FAX) 619-291-4165

J. 13284TTT



RECORDED MAR 27, 2023  
DOCUMENT NO. 2023-0077681

*Brian D. Jaquess*  
BRIAN D. JAQUESS, LS 8379 DATE 3/14/23

## SEWER EASEMENT

OVER A PORTION OF LOT 'A' OF MAP 15782

DESCRIPTION	BY	APPROVED	DATE	FILMED	CITY OF SAN DIEGO, CALIFORNIA	PRJ	1062747
ORIGINAL	REC	S.D.	3/14/23		SHEET 1 OF 2 SHEET	PMT. NO.:	3162479
					FOR CITY LAND SURVEYOR	DATE	3/23/23
						CCS 83 COORDINATES	1836-6301
						NAD 27 COORDINATES	196-1741
							100430-1-B
							B001

ACQUIRED

STATUS

**EXHIBIT "B"**

LINE NAME	DIRECTION	LENGTH
L1	(N 46° 59' 19" W)	19.26'
L2	(N 46° 59' 19" W)	17.79'



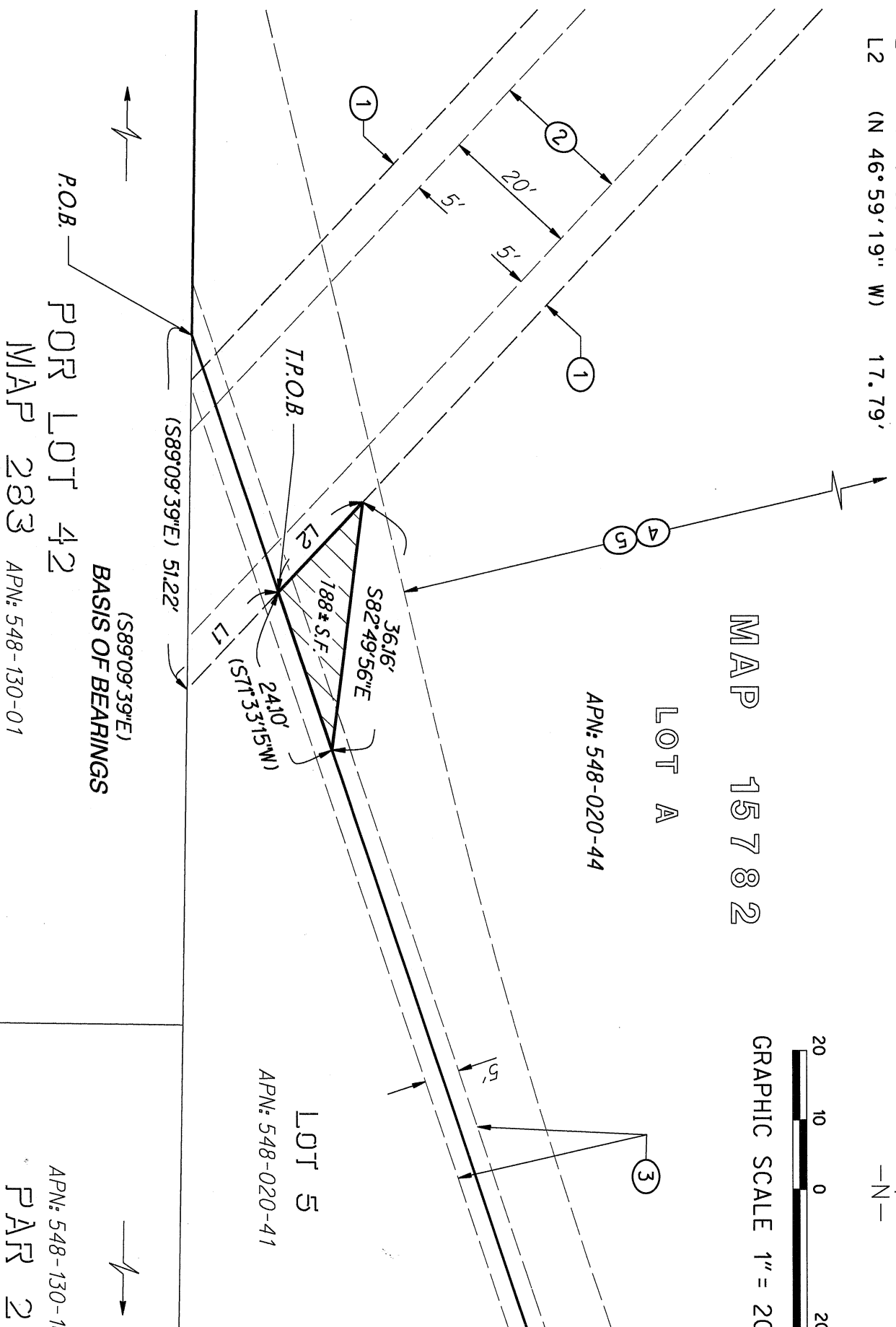
GRAPHIC SCALE 1" = 20'

MAP 15782

LOT A

APN: 548-020-44

LOT 5  
APN: 548-020-41



POR LOT 42  
MAP 283 APN: 548-130-01

R0S 11255

APN: 548-130-10  
PAR 2  
PM 21952  
R0S 11255

**EASEMENTS OUTSIDE OF AREA OF CONCERN**

THE FOLLOWING EXISTING EASEMENT(S) LIE OUTSIDE OF AREA OF CONCERN AND ARE NOT PLOTTED HEREON:

UTILITY EASEMENT GRANTED TO SDG&E, RECORDED JUNE 20, 2000 AS DOC. NO. 2000-0323237, O.R.

SEWER ACCESS EASEMENT GRANTED TO THE CITY OF SAN DIEGO, RECORDED AUGUST 15, 2001 AS DOC. NO. 2001-0581050, O.R. (CITY DWG. 00019-C)

EASEMENT AGREEMENT BETWEEN SAN DIEGO & ARIZONA EASTERN RAILWAY COMPANY AND JACOBS CENTER FOR NEIGHBORHOOD INNOVATION ESTABLISHING PRIVATE ACCESS & UTILITY EASEMENTS RECORDED MARCH 5, 2009, DOC. NO. 2009-0109109, O.R.

DECLARATION ESTABLISHING PRIVATE ACCESS & UTILITY EASEMENTS RECORDED MAY 14, 2012, DOC. NO. 2012-0280621, O.R.

**NON-PLOTTABLE EASEMENTS**

THE FOLLOWING EXISTING EASEMENT(S) HAVE NO SPECIFIC LOCATION SET FORTH AND CANNOT BE PLOTTED:

UTILITY EASEMENT GRANTED TO SDG&E, RECORDED MAY 30, 2000 AS DOC. NO. 2000-0280828, O.R.

UTILITY EASEMENT GRANTED TO SDG&E, RECORDED NOVEMBER 21, 2000 AS DOC. NO. 2000-0634295, O.R.  
UTILITY EASEMENT GRANTED TO SDG&E, RECORDED FEBRUARY 22, 2002 AS DOC. NO. 2002-0152436, O.R.

DECLARATION OF GRANT OF PRIVATE RECIPROCAL EASEMENTS RECORDED AUGUST 14, 2012, DOC. NO. 2012-0481957, O.R.



5620 FRIARS ROAD  
SAN DIEGO, CA 92110  
619-291-0707  
(FAX) 619-291-4165  
J. 13284rrr

**SEWER EASEMENT  
OVER A PORTION OF LOT 'A' OF MAP 15782**

DESCRIPTION	BY	APPROVED	DATE	FILMED	CITY OF SAN DIEGO, CALIFORNIA	PRJ	
ORIGINAL	REC	S.O.	3/28/2013		SHEET 2 OF 2 SHEET	1062747	
						PMT. NO.: 3162479	
					FOR CITY LAND SURVEYOR	1836-6301	
					DATE	CCS 83 COORDINATES	
						196-1741	
						NAD 27 COORDINATES	
<b>ACQUIRED</b>					<b>STATUS</b>	<b>100430-2-B</b>	<b>B002</b>