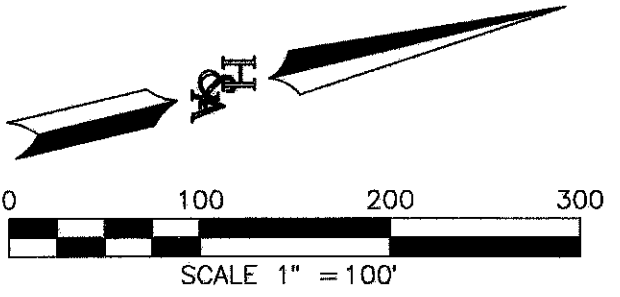


LEGEND

EXHIBIT "B"

- PARCEL A - WATER EASEMENT ACQUIRED AREA = 25 SQ. FT., MORE OR LESS.
- PARCEL B - WATER EASEMENT ACQUIRED AREA = 25 SQ. FT., MORE OR LESS.
- PARCEL C - WATER EASEMENT ACQUIRED AREA = 41 SQ. FT., MORE OR LESS.
- INDICATES BOUNDARY OF UNDERLYING SUBJECT PROPERTY
- INDICATES TIE LINE
- INDICATES RIGHT OF WAY LINE
- INDICATES LOT LINE
- INDICATES EASEMENT LINE
- INDICATES CENTERLINE
- POC** POINT OF COMMENCEMENT
- TPOB** TRUE POINT OF BEGINNING
- POT** POINT OF TERMINUS
- ( )** RECORD DATA PER PM 20968



EASEMENTS

- (A) INDICATES EASEMENT TO SAN DIEGO GAS AND ELECTRIC COMPANY RECORDED JUNE 16, 1966 AS INST. NO. 99321, O.R.
- (B) INDICATES EASEMENTS FOR SEWER, WATER AND DRAINAGE PURPOSES TO CITY OF SAN DIEGO PER MAP NO. 6072.
- (C) INDICATES EASEMENT TO SAN DIEGO GAS AND ELECTRIC COMPANY RECORDED MARCH 9, 2012 AS INST. NO. 2012-0140132, O.R.
- (D) INDICATES EASEMENT FOR GENERAL UTILITY AND ACCESS AND RECREATION PURPOSES TO CITY OF SAN DIEGO PER PM 20968.
- (E) INDICATES GRANT OF RECIPROCAL ACCESS EASEMENT FOR VEHICLE AND PEDESTRIAN INGRESS AND EGRESS AND UTILITY AND DRAINAGE PURPOSES RECORDED JUNE 28, 2013 AS INST. NO. 2013-0408367, O.R.
- (F) INDICATES EASEMENT FOR GENERAL UTILITY AND ACCESS PURPOSES TO CITY OF SAN DIEGO PER PM 20968.
- (G) INDICATES EXISTING WATER EASEMENT TO CITY OF SAN DIEGO PER PM 20968 TO BE VACATED PER DRAWING NUMBER 100378-B.

NON-PLOTTABLE EASEMENTS

THE FOLLOWING EASEMENTS HAVE NO SPECIFIC LOCATION SET FORTH IN THE DOCUMENT AND ARE NOT PLOTTED HEREON:

EASEMENTS FOR PUBLIC UTILITIES AND INGRESS AND EGRESS TO SAN DIEGO GAS & ELECTRIC COMPANY RECORDED NOVEMBER 1, 2001 AS INST. NO. 2001-0797227; NOVEMBER 13, 2001 AS INST. NO. 2001-0823854; SEPTEMBER 12, 2011 AS INST. NO. 2011-0469857; AND JANUARY 9, 2023 AS INST. NO. 2023-0005342, ALL OF O.R.

EASEMENT FOR INGRESS AND EGRESS AND UNDERGROUND TELECOMMUNICATION FACILITIES TO COX COMMUNICATIONS RECORDED SEPTEMBER 7, 2012 AS INST. NO. 2012-0539915; OCTOBER 24, 2012 AS INST. NO. 2012-0653203; AND NOVEMBER 16, 2022 AS INST. NO. 2022-0493083, ALL O.R.

PRIME HEALTHCARE SERVICES ALVARADO, LLC, HOLDER OF AN EASEMENT FOR ACCESS AND PARKING RECORDED DECEMBER 2, 2010 AS INST. NO. 2010-0662310, O.R.

BASIS OF BEARINGS

THE BASIS OF BEARINGS FOR THIS DRAWING IS THE EAST LINE OF PARCEL 2 OF PARCEL MAP NO. 20968 FILED APRIL 30, 2012. I.E. N14°41'19"E

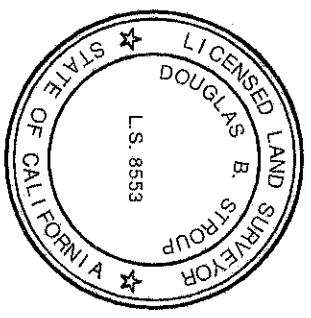
REFERENCES

PARCEL MAP NO. 20968 APN 463-590-32  
 MAP NO. 6072  
 DWG NO. 100031-D

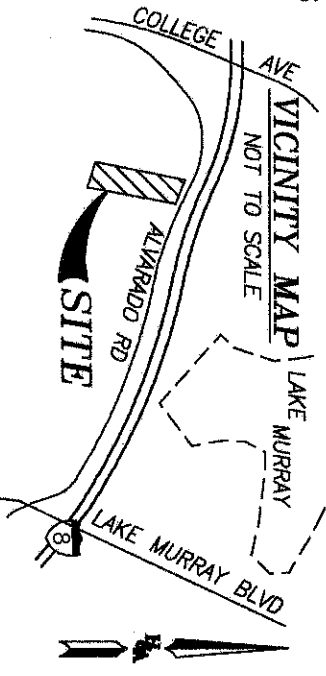
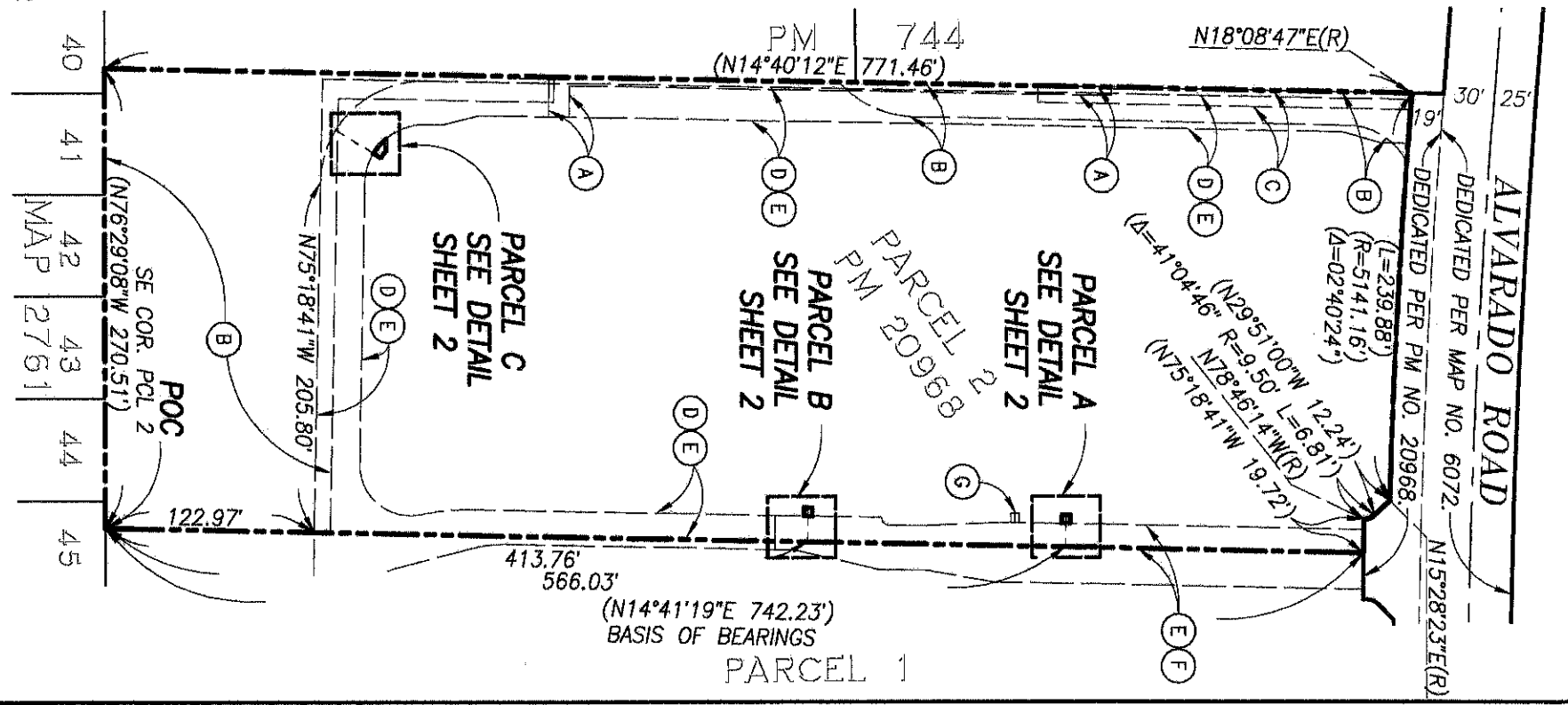
MAP PREPARED BY:

HUNSAKER & ASSOCIATES SAN DIEGO, INC.  
 9707 WAPLES STREET  
 SAN DIEGO, CA 92121 (858) 558-4500

*[Signature]*  
 DOUGLAS B. STROUP, L.S. 8553 DATE 4/7/23



R:\1673\Map\Easements\EP Water Esmt SHF 01 2023-02-23 16:54:28



DOCUMENT NO. 2023-0108982  
 RECORDED APR. 26, 2023

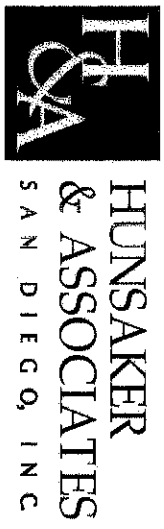
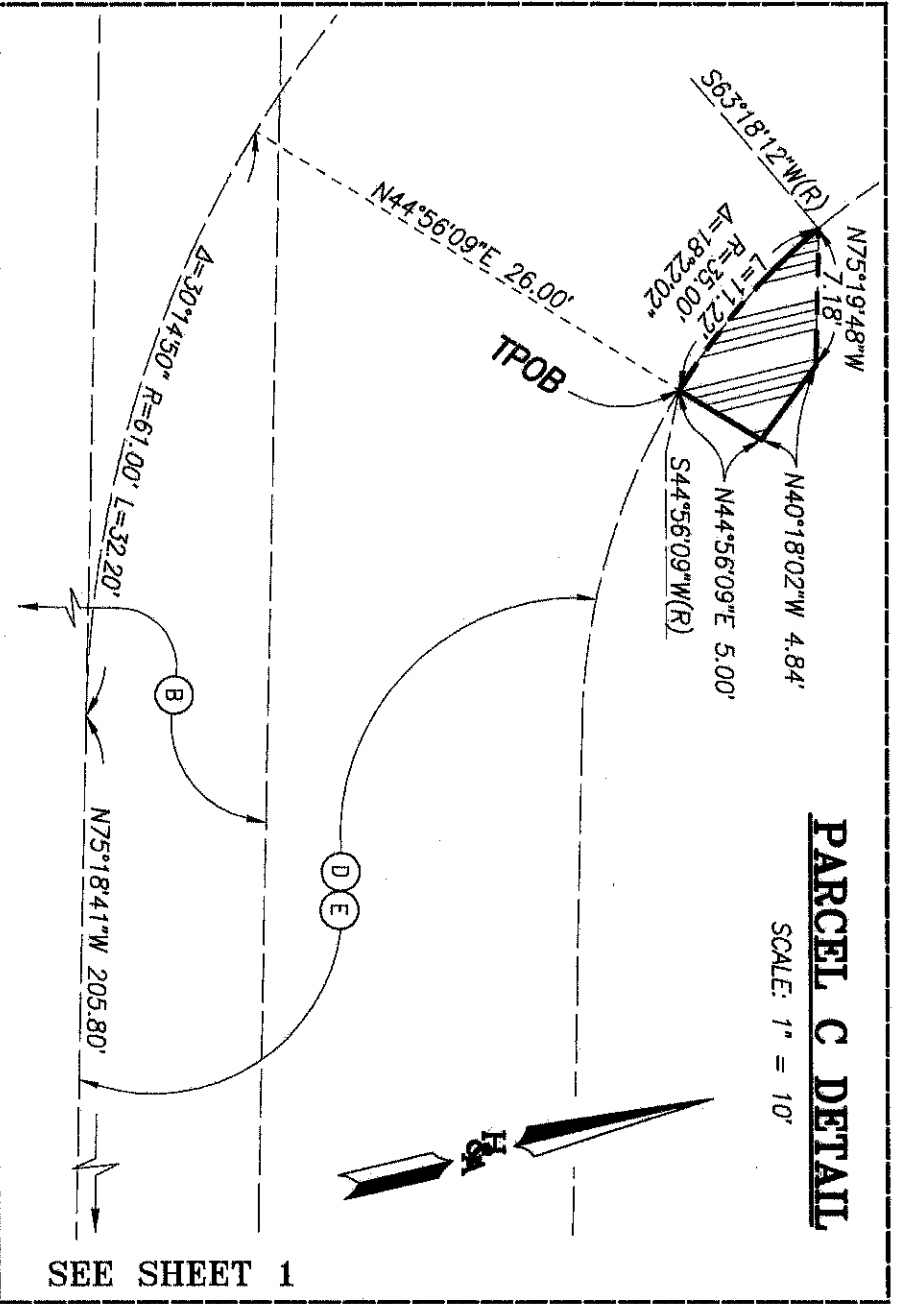
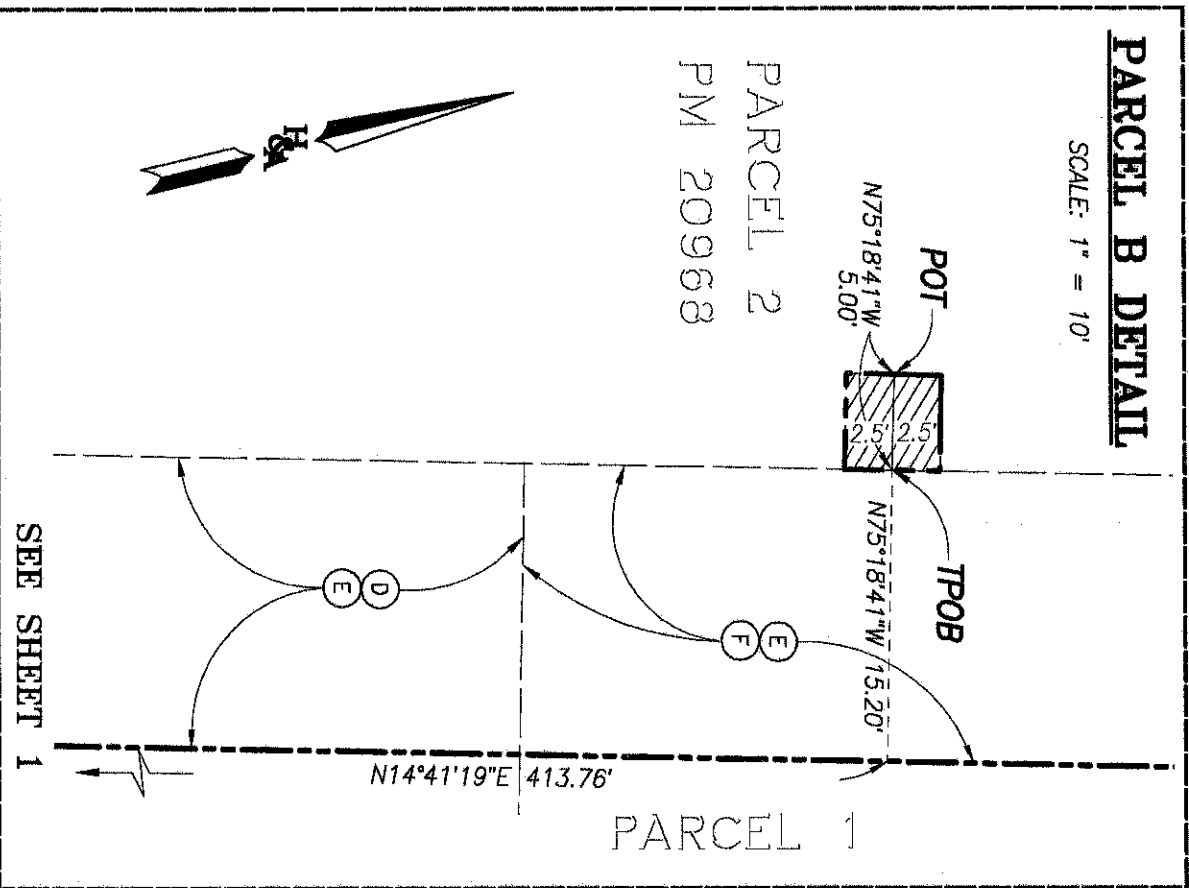
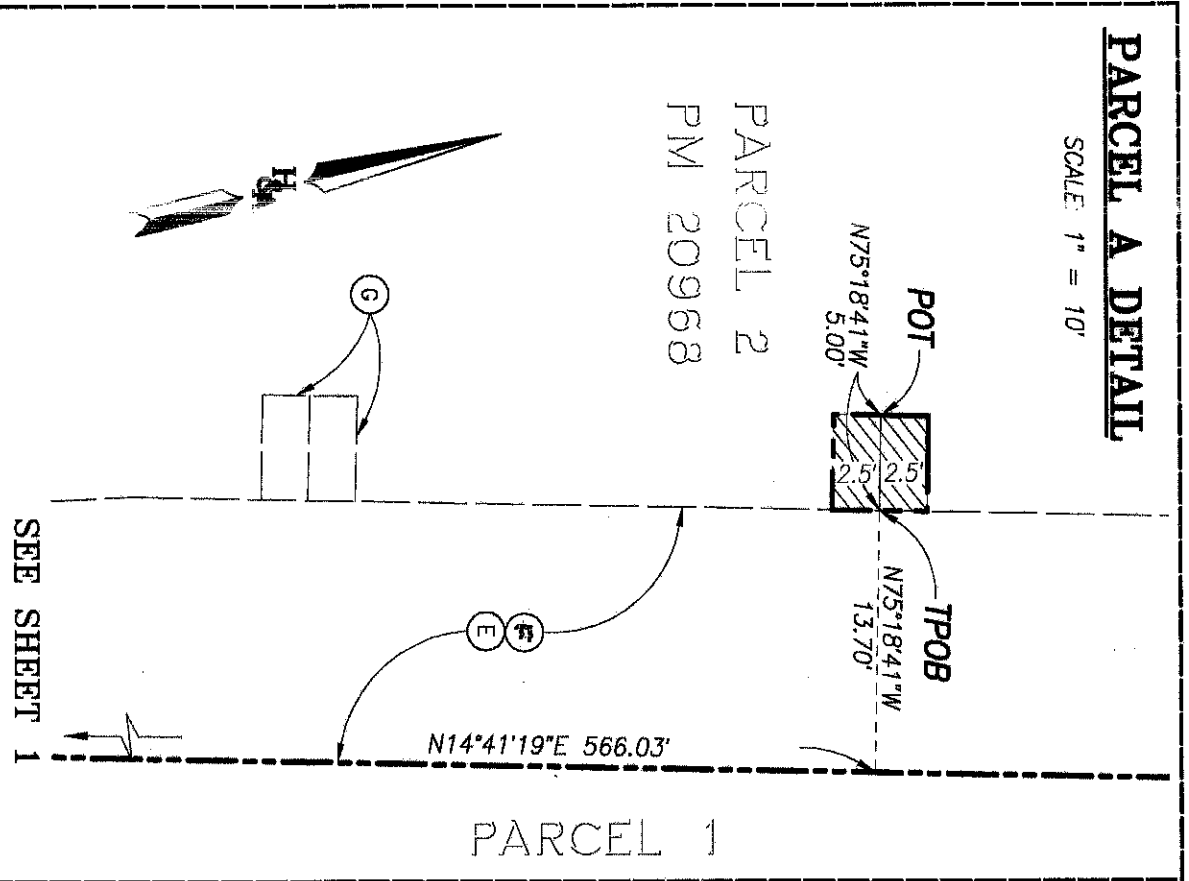
WATER EASEMENTS  
 PORTIONS OF PARCEL 2 OF PARCEL MAP NO. 20968

DESCRIPTION	BY	APPROVED	DATE	FILMED	CITY OF SAN DIEGO, CALIFORNIA	PRJ 1053586
ORIGINAL	XXX				SHEET 1 OF 2 SHEETS	I.O. N/A
					FOR CITY LAND SURVEYOR	1862-6311
					DATE	CCS 83 COORDINATES
						222-1751
						NAD 27 COORDINATES
						100436-1-B
						B001

COMPLETE

STATUS

EXHIBIT "B"  
DETAIL SHEET



WATER EASEMENTS  
PORTIONS OF PARCEL 2 OF PARCEL MAP NO. 20968

DESCRIPTION	BY	APPROVED DATE	FILMED	CITY OF SAN DIEGO, CALIFORNIA	PRJ 1053586
ORIGINAL	XXX			SHEET 2 OF 2 SHEETS	I.O. N/A
				ALL R. Kib	1862-6311
				FOR CITY LAND SURVEYOR DATE	CCS 83 COORDINATES
				DATE	222-1751
					NAD 27 COORDINATES
COMPLETE				STATUS	100436-2-B
					B002