

EXHIBIT 'C'




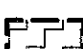

ASSESSOR'S PARCEL NO.:

313-031-28, 313-040-71, 313-043-01,
313-512-43, AND 313-541-10

REFERENCE DRAWINGS:

- TM 2366422 • PM 16647.
- PM 15727 • MAP 11321
- PM 15758

LEGEND:

-  INDICATES COVENANT OF EASEMENT ACQUIRED
PARCEL 'A' AREA = 1.724 ACRES
-  INDICATES COVENANT OF EASEMENT ACQUIRED
PARCEL 'B' AREA = 0.985 ACRES
-  INDICATES COVENANT OF EASEMENT ACQUIRED
PARCEL 'C' AREA = 0.202 ACRES
-  INDICATES COVENANT OF EASEMENT ACQUIRED
PARCEL 'D' AREA = 1.087 ACRES
-  INDICATES COVENANT OF EASEMENT ACQUIRED
PARCEL 'E' AREA = 16.775 ACRES

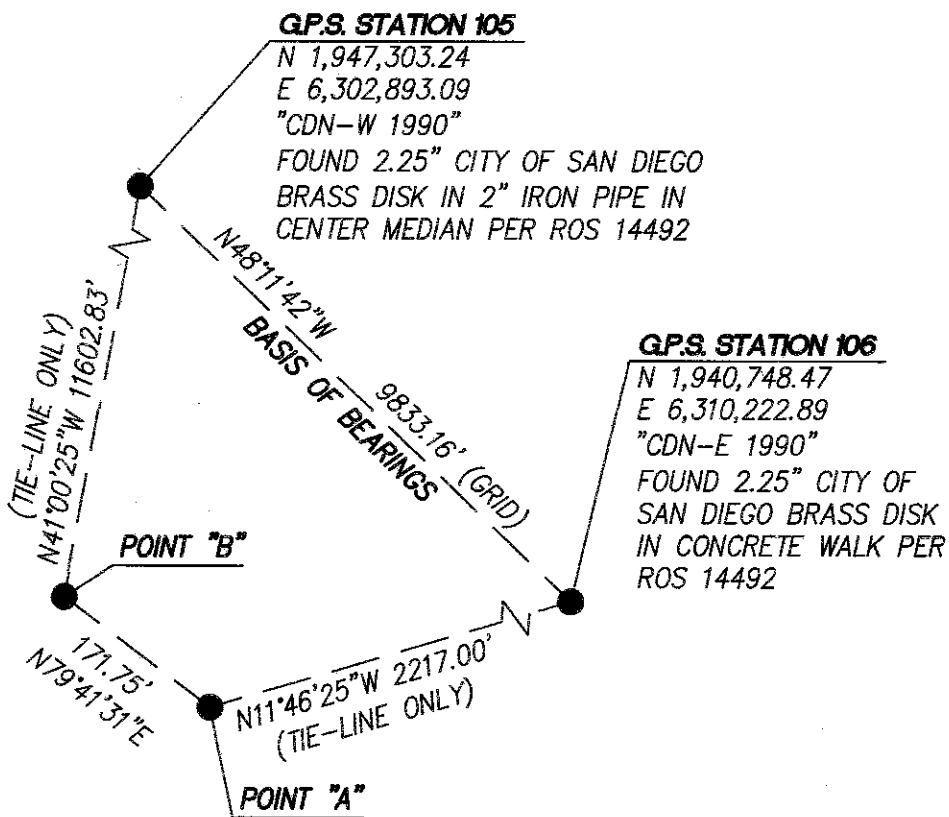
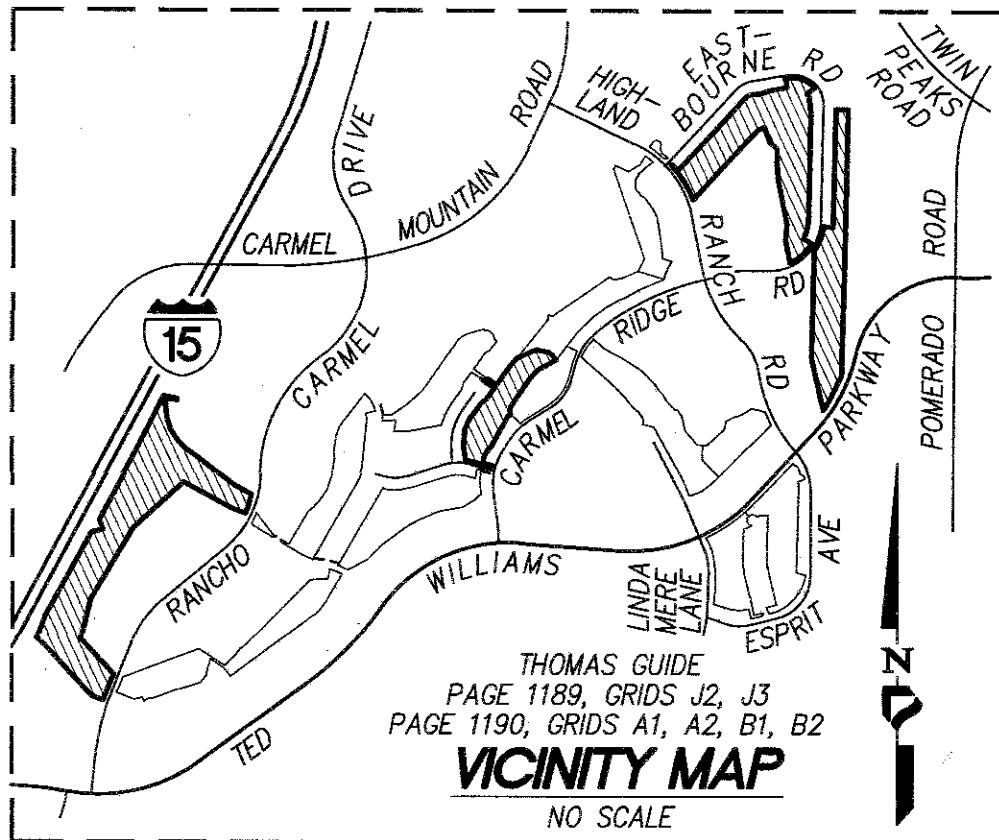
- P.O.C. INDICATES PONT OF COMMENCEMENT
- T.P.O.B. INDICATES TRUE POINT OF BEGINNING
- INDICATES FOUND MONUMENT AS NOTED

BASIS OF BEARINGS:

BASIS OF BEARINGS FOR THIS SURVEY IS THE CALIFORNIA COORDINATES OF 1983 (CCS83) ZONE 6, 1991.35 EPOCH, GRID BEARING BETWEEN 1ST ORDER G.P.S. STATION NOS. 105 AND 106 PER RECORD OF SURVEY NO. 14492. I.E. NORTH 48°11'42" WEST


PARCEL 2 OF PARCEL MAP NO. 15758:
CONTROL POINT "A" C.S.F. = 0.999948072 (SEE SHEET 4)

DISTANCES SHOWN HEREON ARE GROUND DISTANCES. GRID DISTANCE = GROUND DISTANCE X COMBINED SCALE FACTOR. BEARINGS AND DISTANCES FROM REFERENCE DEEDS/MAPS MAY OR MAY NOT BE IN TERMS OF SAID SYSTEM.



PROJECT DESIGN CONSULTANTS
701 B Street, Suite 800 San Diego, CA 92101
619.235.6471 Tel 619.234.0349 Fax

Sean C. Squire 4-10-2023
SEAN C. SQUIRE, L.S. 9601 DATE



DOCUMENT NO.: 2023-0120878 O.R.
RECORDED: MAY 9, 2023
DOCUMENT NO.: _____
RECORDED: _____

COVENANT OF EASEMENT FOR PROTECTION OF SENSITIVE BIOLOGICAL RESOURCES

PARCEL 1 PER PARCEL MAP 15727, PARCEL 1 AND PARCEL 2 PER PARCEL MAP 15758, PARCEL 1 PER PARCEL MAP 16647 AND LOT 101 OF MAP 11321

DESCRIPTION	BY	APPRVD.	DATE	FILMED	CITY OF SAN DIEGO, CALIFORNIA	PRJ NO.
ORIGINAL	PDC				SHEET 1 OF 14 SHEETS	1066289
					<i>Indira R. Nij</i> 5/3/2023 FOR CITY LAND SURVEYOR DATE	I.O. NO. N/A
						1982-6307
						CCS83 COORDINATES
						292-1747
						NAD 27 COORDINATES
STATUS					100504-1-B	B001

EASEMENT LEGEND

- ① EXISTING 120' WIDE EASEMENT TO SAN DIEGO GAS & ELECTRIC COMPANY FOR TRANSMISSION AND DISTRIBUTION OF ELECTRICITY RECORDED NOVEMBER 2, 1962 AS FILE/PAGE NO. 188596, O.R.
- ② EXISTING EASEMENT FOR SEWER MAINS TO THE CITY OF SAN DIEGO RECORDED APRIL 8, 1982 AS DOCUMENT NO. 82-096574, O.R.
- ④ EXISTING EASEMENT FOR DRAINAGE TO THE CITY OF SAN DIEGO RECORDED MARCH 12, 1986 AS DOCUMENT NO. 86-095523, O.R.
- ④A EXISTING DRAINAGE EASEMENT TO THE CITY OF SAN DIEGO RECORDED DECEMBER 4, 1986 AS DOCUMENT NO. 86-561413, O.R.
- ⑥ EXISTING 150' WIDE EASEMENT TO SAN DIEGO GAS & ELECTRIC COMPANY FOR TRANSMISSION AND DISTRIBUTION OF ELECTRICITY, AND TELEPHONE SIGNAL AND COMMUNICATION PURPOSES RECORDED OCTOBER 3, 1988 AS DOCUMENT NO. 88-501528 O.R.
- ⑧ EXISTING EASEMENT FOR INGRESS AND EGRESS TO MAINTAIN, REPAIR AND REPLACE THE MONUMENTS, AS WELL AS ALL OTHER IMPROVEMENTS, TO CARMEL MOUNTAIN RANCH RESIDENTIAL COMMUNITY ASSOCIATION, RECORDED AUGUST 8, 1988 AS DOCUMENT NO. 1988-081990, O.R.
- ⑱ EXISTING EASEMENT FOR DRAINAGE TO THE CITY OF SAN DIEGO RECORDED FEBRUARY 7, 1985 AS DOCUMENT NO. 85-042162, O.R.
- ⑳ EXISTING BUILDING RESTRICTED EASEMENT GRANTED TO THE CITY OF SAN DIEGO PER MAP NO. 11321.
- ㉒ RELINQUISHMENT TO STATE OF CALIFORNIA OF ANY AND ALL ABUTTERS RIGHTS AND ACCESS RIGHTS IN AND TO ADJOINING FREEWAY, RECORDED MARCH 5, 1980 AS FILE/PAGE NO. 80-074838, O.R.

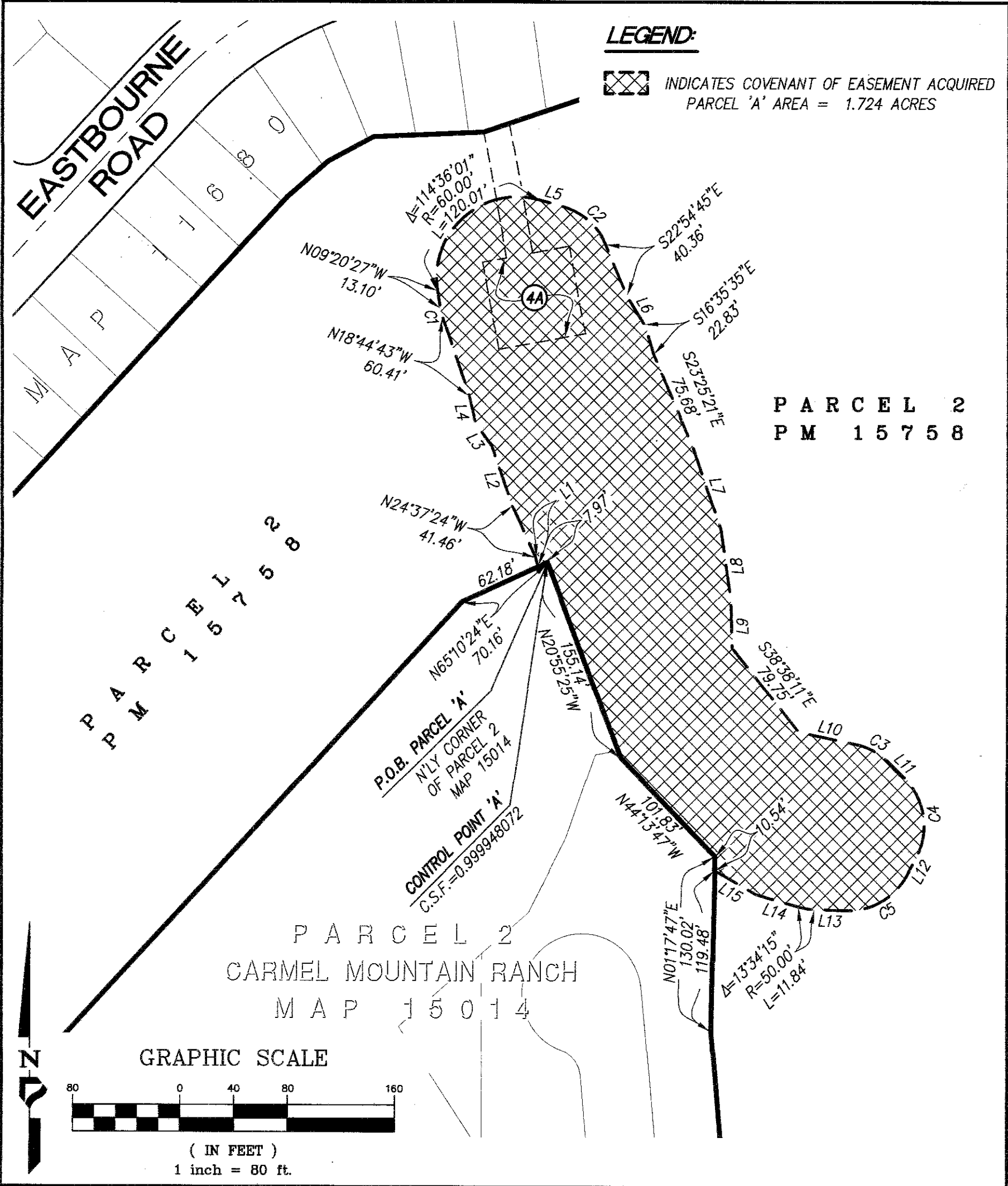


PROJECT DESIGN CONSULTANTS

701 B Street, Suite 800 San Diego, CA 92101
619.235.6471 Tel 619.234.0349 Fax

COVENANT OF EASEMENT FOR PROTECTION OF SENSITIVE BIOLOGICAL RESOURCES
PARCEL 1 PER PARCEL MAP 15727, PARCEL 1 AND PARCEL 2 PER PARCEL MAP 15758, PARCEL 1 PER
PARCEL MAP 16647 AND LOT 101 OF MAP 11321

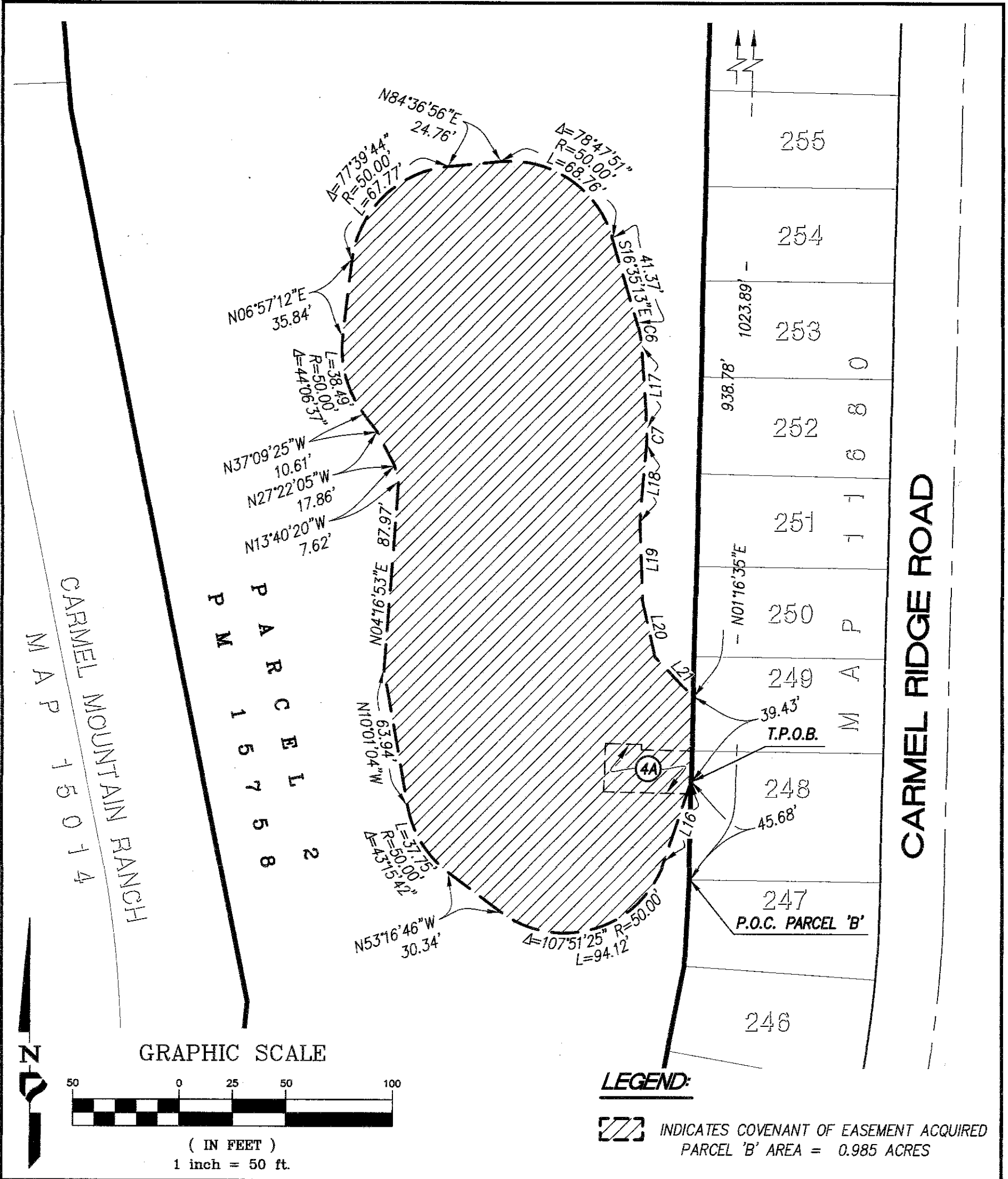
DESCRIPTION	BY	APPRVD.	DATE	FILMED	CITY OF SAN DIEGO, CALIFORNIA		PRJ NO. 1066289
ORIGINAL	PDC				SHEET 2 OF 14 SHEETS		I.O. NO. N/A
					<i>Frank R. Fitz</i>	<i>5/3/2023</i>	1982-6307
					FOR CITY LAND SURVEYOR	DATE	CCS83 COORDINATES
							292-1747
							NAD 27 COORDINATES
STATUS						100504-2-B	B002



PROJECT DESIGN CONSULTANTS
 701 B Street, Suite 800 San Diego, CA 92101
 619.235.6471 Tel 619.234.0349 Fax

**COVENANT OF EASEMENT FOR PROTECTION OF SENSITIVE
 BIOLOGICAL RESOURCES
 WITHIN PORTION OF PARCEL 2 PER PARCEL MAP 15758**

DESCRIPTION	BY	APPRVD.	DATE	FILMED	CITY OF SAN DIEGO, CALIFORNIA SHEET 4 OF 14 SHEETS	PRJ NO. 1066289
ORIGINAL	PDC					
					<i>Frank R. King</i>	1982-6307
					FOR CITY LAND SURVEYOR	CCS83 COORDINATES
						292-1747
						NAD 27 COORDINATES
STATUS					100504-4-B	B004



PROJECT DESIGN CONSULTANTS
 701 B Street, Suite 800 San Diego, CA 92101
 619.235.6471 Tel 619.234.0349 Fax

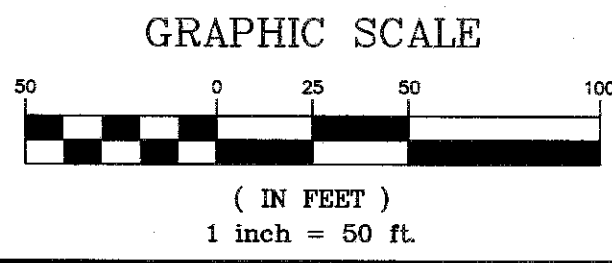
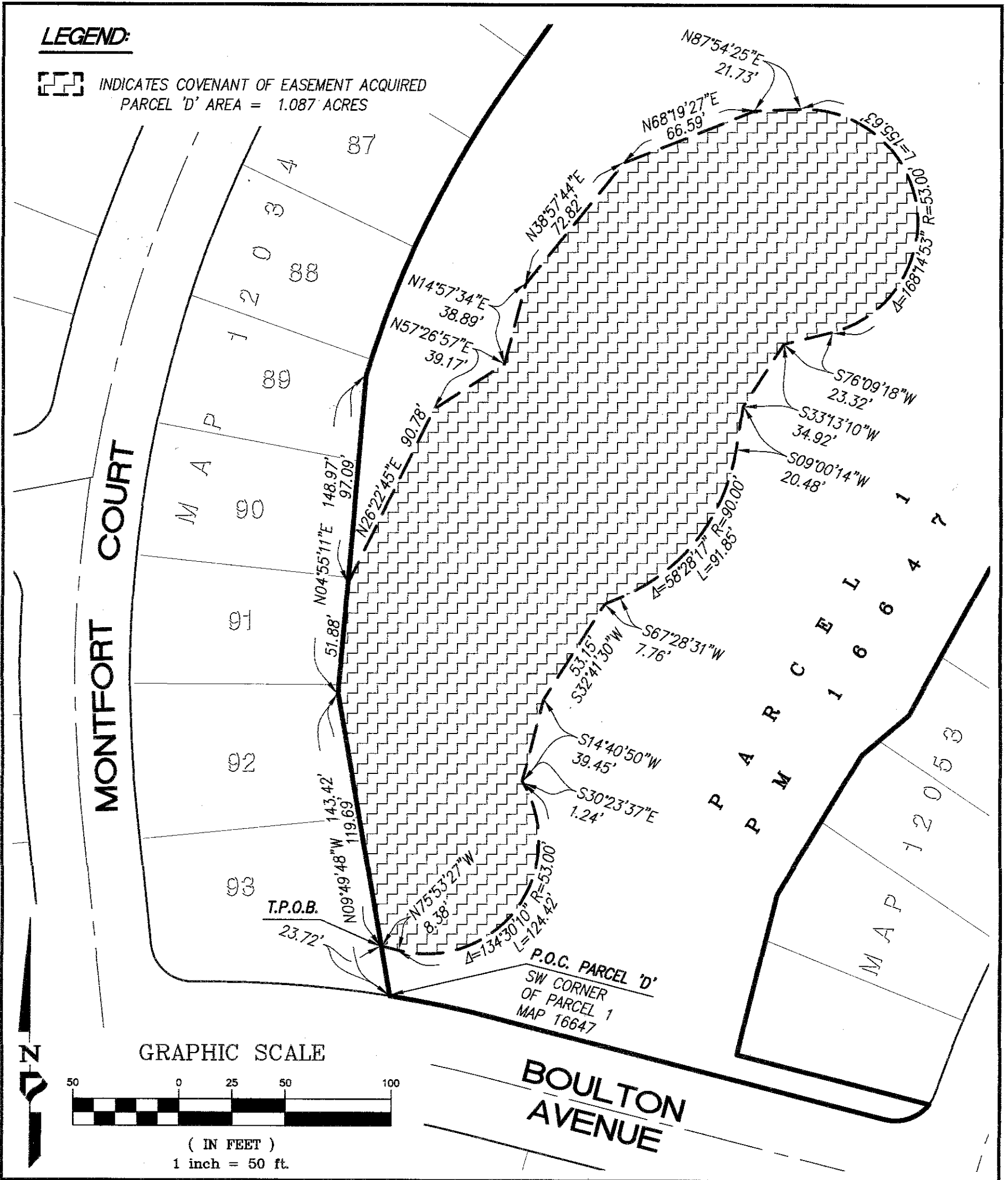
**COVENANT OF EASEMENT FOR PROTECTION OF SENSITIVE
 BIOLOGICAL RESOURCES
 WITHIN PORTION OF PARCEL 2 PER PARCEL MAP 15758**

DESCRIPTION	BY	APPRVD.	DATE	FILMED	CITY OF SAN DIEGO, CALIFORNIA		PRJ NO. 1066289
ORIGINAL	PDC				SHEET 5 OF 14 SHEETS		I.O. NO. N/A
					<i>Tambak D. H. 17</i>	<i>5/13/2023</i>	1982-6307
					FOR CITY LAND SURVEYOR	DATE	CCS83 COORDINATES
							292-1747
							NAD 27 COORDINATES
STATUS					100504-5-B		B005

LEGEND:



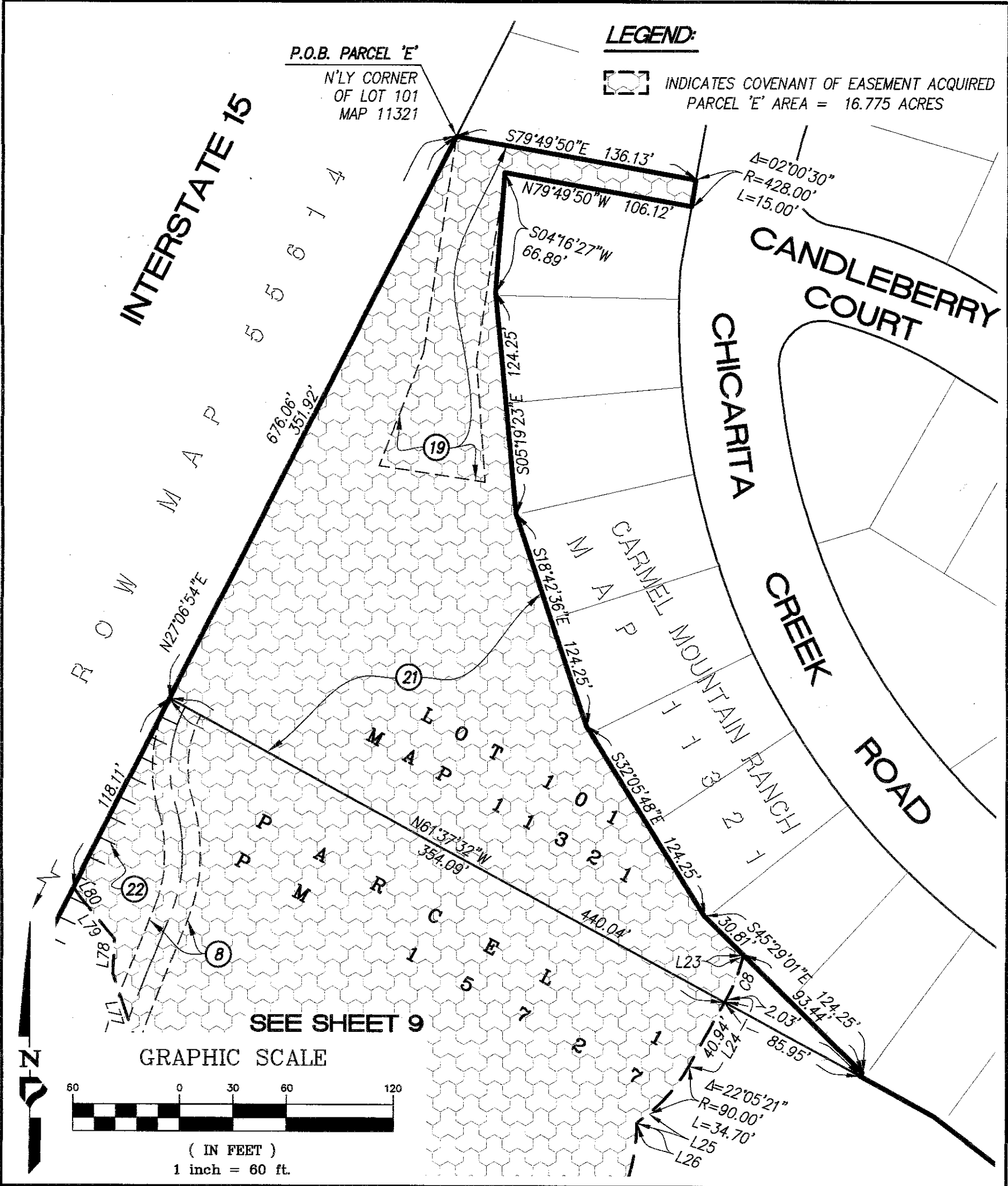
INDICATES COVENANT OF EASEMENT ACQUIRED
 PARCEL 'D' AREA = 1.087 ACRES



PROJECT DESIGN CONSULTANTS
 701 B Street, Suite 800 San Diego, CA 92101
 619.235.6471 Tel 619.234.0349 Fax

**COVENANT OF EASEMENT FOR PROTECTION OF SENSITIVE
 BIOLOGICAL RESOURCES
 WITHIN PORTION OF PARCEL 1 PER PARCEL MAP 16647**

DESCRIPTION	BY	APPRVD.	DATE	FILMED	CITY OF SAN DIEGO, CALIFORNIA SHEET 7 OF 14 SHEETS	PRJ NO. 1066289
ORIGINAL	PDC					
					<i>Frank R. Kelly</i> FOR CITY LAND SURVEYOR	1982-6307
					<i>5/3/2003</i> DATE	CCS83 COORDINATES
						292-1747
						NAD 27 COORDINATES
					STATUS	100504-7-B
						B007



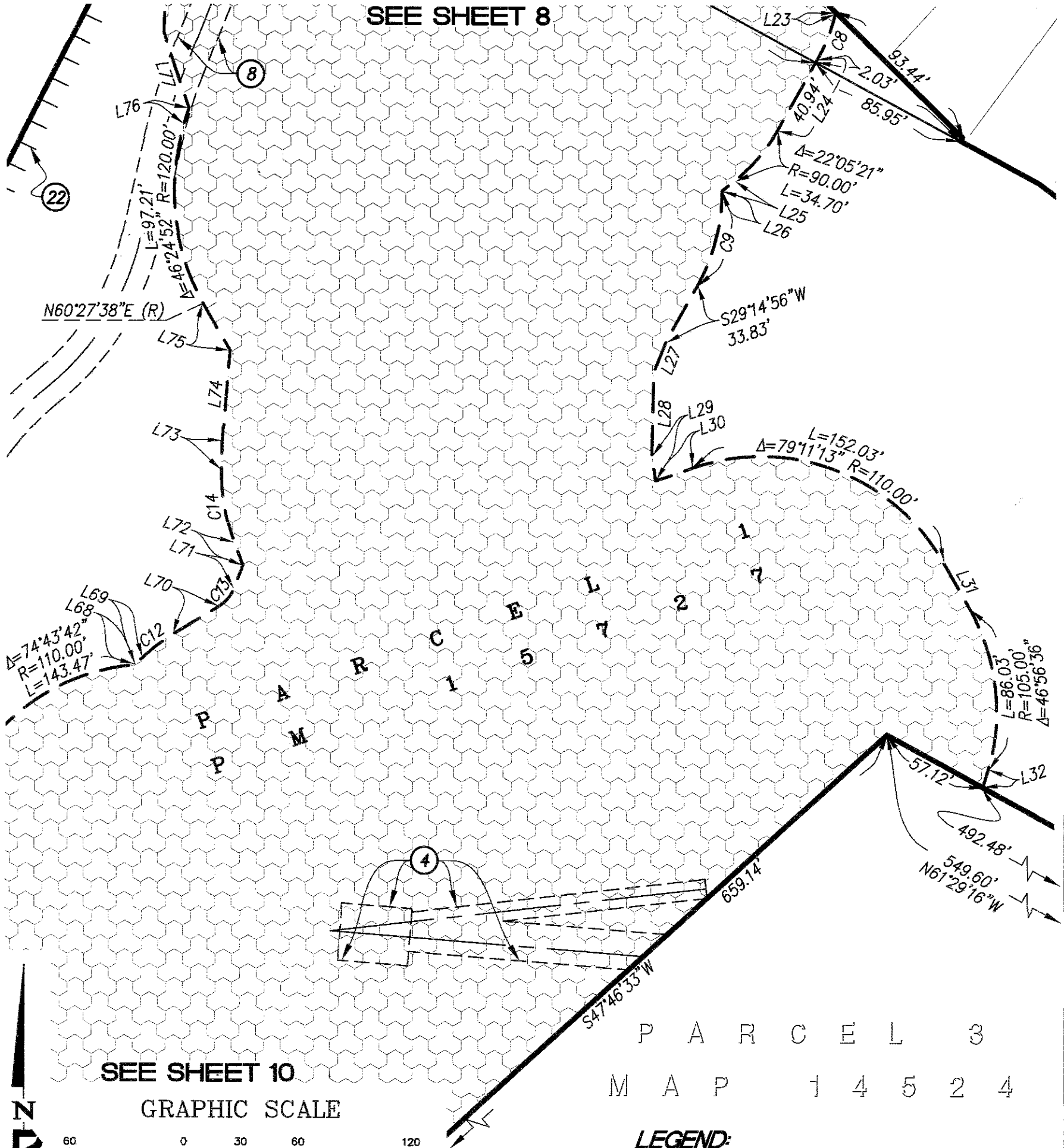
PROJECT DESIGN CONSULTANTS
 701 B Street, Suite 800 San Diego, CA 92101
 619.235.6471 Tel 619.234.0349 Fax

COVENANT OF EASEMENT FOR PROTECTION OF SENSITIVE BIOLOGICAL RESOURCES

WITHIN PORTIONS OF LOT 101 PER MAP NO. 11321 AND PARCEL 1 PER PARCEL MAP 15727

DESCRIPTION	BY	APPRVD.	DATE	FILMED	CITY OF SAN DIEGO, CALIFORNIA SHEET 8 OF 14 SHEETS	PRJ NO.
ORIGINAL	PDC					
					<i>Frank R. 4/17</i>	I.O. NO.
					FOR CITY LAND SURVEYOR	N/A
					<i>5/2/2013</i>	1982-6307
					DATE	CCS83 COORDINATES
						292-1747
						NAD 27 COORDINATES
STATUS					100504-8-B	B008

SEE SHEET 8

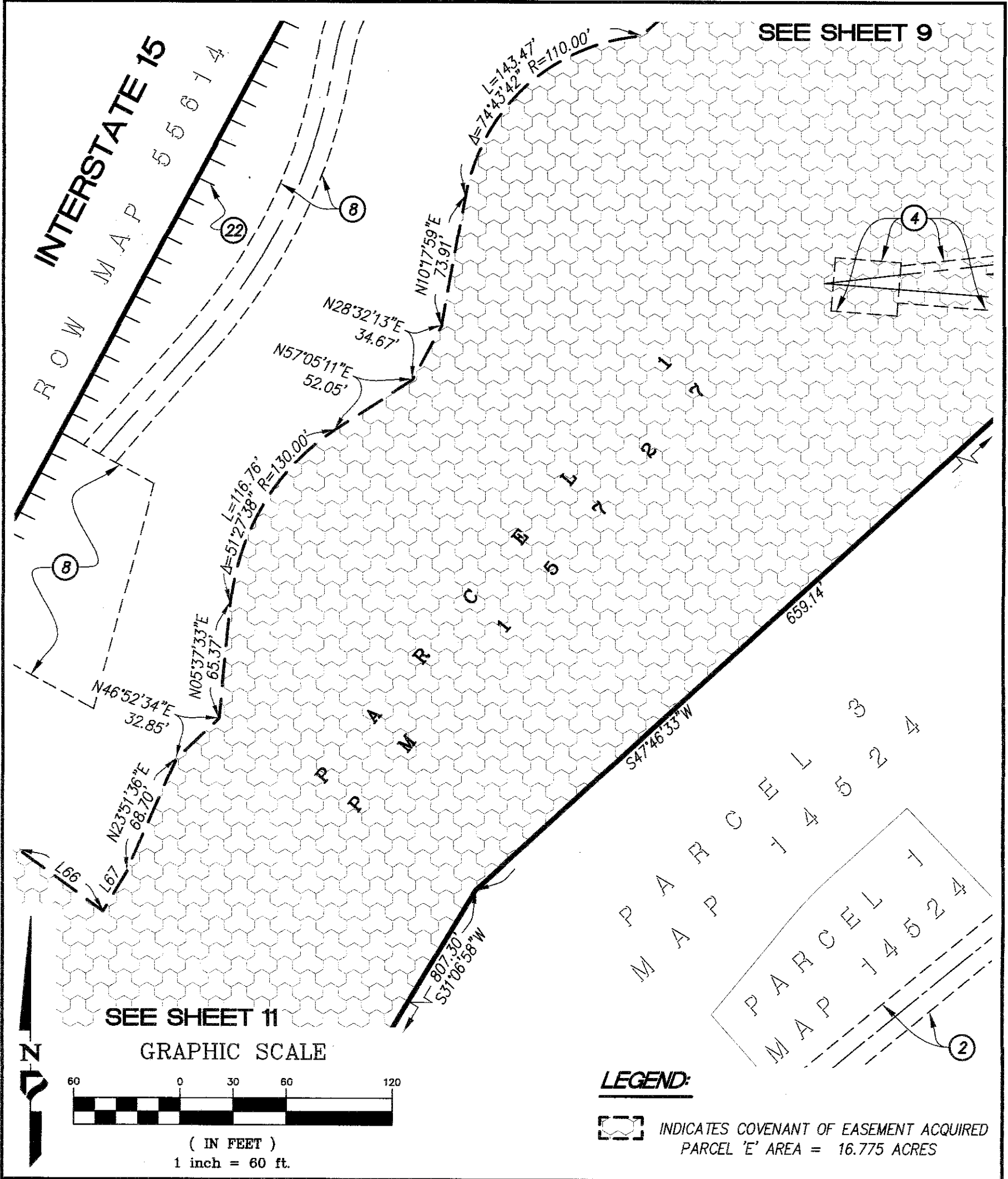


PROJECT DESIGN CONSULTANTS
701 B Street, Suite 800 San Diego, CA 92101
619.235.6471 Tel 619.234.0349 Fax

COVENANT OF EASEMENT FOR PROTECTION OF SENSITIVE BIOLOGICAL RESOURCES
WITHIN PORTION OF PARCEL 1 PER PARCEL MAP 15727

DESCRIPTION	BY	APPRVD.	DATE	FILMED	CITY OF SAN DIEGO, CALIFORNIA SHEET 9 OF 14 SHEETS	PRJ NO. 1066289
ORIGINAL	PDC					
					<i>Tomoko R. ...</i>	1982-6307
					FOR CITY LAND SURVEYOR	CCS83 COORDINATES
					DATE	292-1747
						NAD 27 COORDINATES
STATUS					100504-9-B	B009

SEE SHEET 9



PROJECT DESIGN CONSULTANTS
701 B Street, Suite 800 San Diego, CA 92101
619.235.6471 Tel 619.234.0349 Fax

COVENANT OF EASEMENT FOR PROTECTION OF SENSITIVE BIOLOGICAL RESOURCES
WITHIN PORTION OF PARCEL 1 PER PARCEL MAP 15727

DESCRIPTION	BY	APPRVD.	DATE	FILMED	CITY OF SAN DIEGO, CALIFORNIA		PRJ NO. 1066289
ORIGINAL	PDC				SHEET 10 OF 14 SHEETS		I.O. NO. N/A
					<i>Judith A. + 17</i>	5/2/2013	1982-6307
					FOR CITY LAND SURVEYOR	DATE	CCS83 COORDINATES
							292-1747
							NAD 27 COORDINATES
						100504-10-B	B010
STATUS							

PARCEL A

LINE TABLE		
NO.	BEARING	LENGTH
L1	N14°37'15"W	7.16'
L2	N19°04'35"W	47.15'
L3	N36°01'09"W	20.97'
L4	N13°18'14"W	21.09'
L5	S74°44'26"E	18.81'
L6	S31°14'23"E	25.71'
L7	S18°56'56"E	64.10'
L8	S08°10'39"E	57.10'
L9	S01°40'44"E	31.10'
L10	S78°09'05"E	43.46'
L11	S45°43'57"E	16.26'
L12	S28°36'43"W	14.76'
L13	N87°52'44"W	23.43'
L14	N74°18'29"W	32.98'
L15	N60°01'01"W	35.62'

PARCEL B

LINE TABLE		
NO.	BEARING	LENGTH
L16	S18°51'49"W	39.04'
L17	S03°54'03"E	38.29'
L18	S05°04'47"W	36.02'
L19	S02°14'44"E	36.40'
L20	S12°59'42"E	27.28'
L21	S43°50'41"E	25.88'

PARCEL C

LINE TABLE		
NO.	BEARING	LENGTH
L22	N17°12'12"E	16.05'

PARCEL E

LINE TABLE		
NO.	BEARING	LENGTH
L23	S13°07'30"W	1.17'
L24	S29°14'56"W	42.97'
L25	S51°20'17"W	8.61'
L26	S00°00'00"W	0.74'
L27	S21°36'53"W	17.10'
L28	S01°22'22"W	43.63'
L29	S08°54'07"E	13.24'
L30	N70°44'41"E	20.56'
L31	S30°04'06"E	28.86'
L32	S16°52'30"W	9.84'
L33	S13°07'30"W	7.65'
L34	S35°37'21"W	5.31'
L35	S29°08'57"W	18.06'

PARCEL E (CONTINUED)

LINE TABLE		
NO.	BEARING	LENGTH
L36	S39°22'41"W	5.58'
L37	S16°50'11"E	3.29'
L38	S46°52'38"W	1.47'
L39	N43°42'23"E	39.42'
L40	N20°16'58"W	32.21'
L41	N31°42'07"E	31.46'
L42	N10°32'22"E	30.46'
L43	N05°54'22"E	60.89'
L44	N16°53'12"E	53.65'
L45	N54°21'38"E	64.37'
L46	N73°33'18"E	27.01'
L47	N78°28'50"E	19.09'
L48	N28°50'34"E	22.31'
L49	N44°58'48"E	33.52'
L50	N62°13'56"E	17.46'
L51	N26°20'53"E	14.96'
L52	N18°23'51"E	24.62'
L53	N27°40'42"E	22.26'
L54	N37°17'27"E	18.61'
L55	N09°02'17"W	9.63'
L56	N36°18'55"E	17.98'
L57	N29°55'05"E	20.12'
L58	N56°55'58"W	24.51'
L59	N45°29'58"W	16.38'
L60	N37°39'30"W	12.80'
L61	N35°31'01"W	17.95'
L62	N25°00'51"W	22.54'
L63	N12°37'44"W	13.29'
L64	N07°43'18"W	6.25'
L65	N88°03'20"E	0.36'
L66	S54°07'49"E	58.31'
L67	N30°51'15"E	26.56'
L68	N85°01'41"E	0.43'
L69	N46°51'00"E	5.67'
L70	N58°34'13"E	27.31'
L71	N21°24'48"E	12.66'
L72	N20°46'20"W	13.18'
L73	N01°19'56"E	14.89'
L74	N04°37'06"E	47.46'
L75	N29°32'44"W	28.16'
L76	N18°11'08"E	8.63'
L77	N18°54'59"W	41.81'
L78	N01°52'32"E	19.29'
L79	N39°32'09"W	29.90'
L80	N34°39'32"W	7.16'

PARCEL A

ARC TABLE			
NO.	DELTA	RADIUS	LENGTH
C1	Δ=09°24'16"	50.00'	8.21'
C2	Δ=51°49'41"	50.00'	45.23'
C3	Δ=32°25'08"	50.00'	28.29'
C4	Δ=74°20'40"	50.00'	64.88'
C5	Δ=63°30'33"	50.00'	55.42'

PARCEL B

ARC TABLE			
NO.	DELTA	RADIUS	LENGTH
C6	Δ=12°41'10"	50.00'	11.07'
C7	Δ=08°58'50"	50.00'	7.84'

PARCEL E

ARC TABLE			
NO.	DELTA	RADIUS	LENGTH
C8	Δ=16°07'26"	90.00'	25.33'
C9	Δ=29°14'56"	100.00'	51.05'
C10	Δ=22°29'51"	100.00'	39.27'
C11	Δ=37°28'26"	90.00'	58.86'
C12	Δ=11°43'13"	100.00'	20.46'
C13	Δ=37°09'25"	20.00'	12.97'
C14	Δ=22°06'16"	100.00'	38.58'



PROJECT DESIGN CONSULTANTS

701 B Street, Suite 800 San Diego, CA 92101
619.235.6471 Tel 619.234.0349 Fax

COVENANT OF EASEMENT FOR PROTECTION OF SENSITIVE BIOLOGICAL RESOURCES
PARCEL 1 PER PARCEL MAP 15727, PARCEL 1 AND PARCEL 2 PER PARCEL MAP 15758, PARCEL 1 PER
PARCEL MAP 16647 AND LOT 101 OF MAP 11321

DESCRIPTION	BY	APPRVD.	DATE	FILMED	CITY OF SAN DIEGO, CALIFORNIA SHEET 14 OF 14 SHEETS	PRJ NO.
ORIGINAL	PDC					
					<i>Frank R. Kelly</i> FOR CITY LAND SURVEYOR	I.O. NO. N/A
					5/2/2012 DATE	1982-6307
						CCS83 COORDINATES
						292-1747
						NAD 27 COORDINATES
					STATUS	100504-14-B
						B014