

# EXHIBIT "B"

## LEGEND

- INDICATES BOUNDARY OF VACATED EASEMENTS
- INDICATES RIGHT OF WAY LINE
- INDICATES LOT LINE
- INDICATES EASEMENT LINE

## EASEMENTS

Ⓐ EASEMENT FOR GENERAL UTILITY AND ACCESS PURPOSES TO CITY OF CHULA VISTA RECORDED MAY 25, 2006 AS INST. NO. 2006-0370562, O.R.

ALL OF ACCESS EASEMENT GRANTED TO THE CITY OF SAN DIEGO PER DOC. REC. 8/16/2013, INST. NO. 2013-0516512, VACATED. AREA = 0.669 ACRES

## NON-PLOTTABLE EASEMENTS

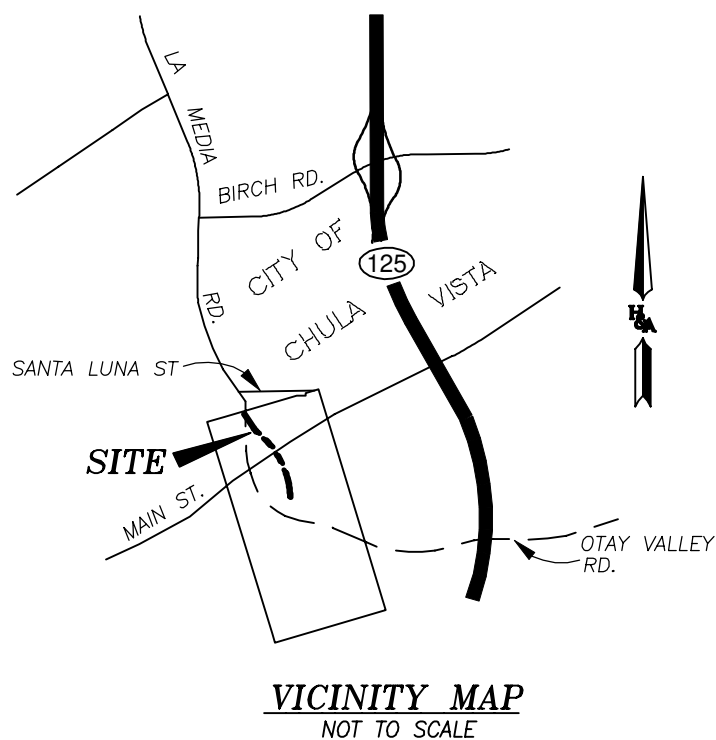
THE FOLLOWING EASEMENTS HAVE NO SPECIFIC LOCATION SET FORTH IN DOCUMENT AND ARE NOT PLOTTED HEREON:

EASEMENT FOR FLUMES, CANALS, OR AQUEDUCTS TO KIMBALL BROTHERS WATER COMPANY REC. 10/14/1869 IN BOOK 7, PAGE 124 OF DEEDS.

EASEMENTS FOR INGRESS AND EGRESS TO THE CITY OF SAN DIEGO REC. 8/22/1972 AS INSTRUMENT NO. 222267 AND JANUARY 9, 2009 AS INSTRUMENT NO. 2009-0010329, O.R.

EASEMENT TO OTAY LAND COMPANY FOR VARIOUS PURPOSES REC. 10/29/2018 AS INSTRUMENT NO. 2018-0450260, O.R.

EASEMENTS FOR ASSOCIATION MAINTENANCE TO OTAY LAND COMPANY WITHIN PUBLIC RIGHT OF WAY REC. 11/5/2020 AS INST. NO. 2020-0691765, O.R.



## APN

644-071-01, -04, -05, -17

## BASIS OF BEARINGS

THE BASIS OF BEARINGS FOR THIS DRAWING IS THE NORTHWESTERLY LINE OF LOT 4 OF CITY OF CHULA VISTA TRACT NO. 19-03 OTAY RANCH VILLAGE 8 WEST 'A' MAP, MAP NO. 16428, FILED 11/3/2020. I.E. N71°56'24"E

## REFERENCES

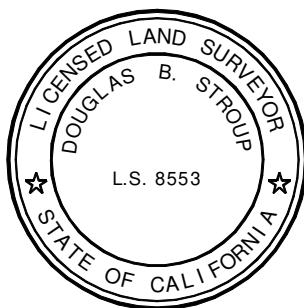
MAP NO. 16428  
 CERT. OF COMP. 2022-0201879  
 CERT. OF COMP. 2022-0212539

MAP PREPARED BY:

HUNSAKER & ASSOCIATES SAN DIEGO, INC.  
 9707 WAPLES STREET  
 SAN DIEGO, CA 92121

DOUGLAS B. STROUP

12/29/22  
 L.S. 8553



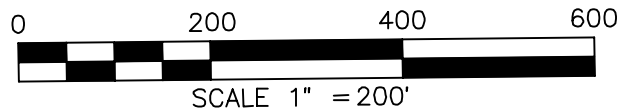
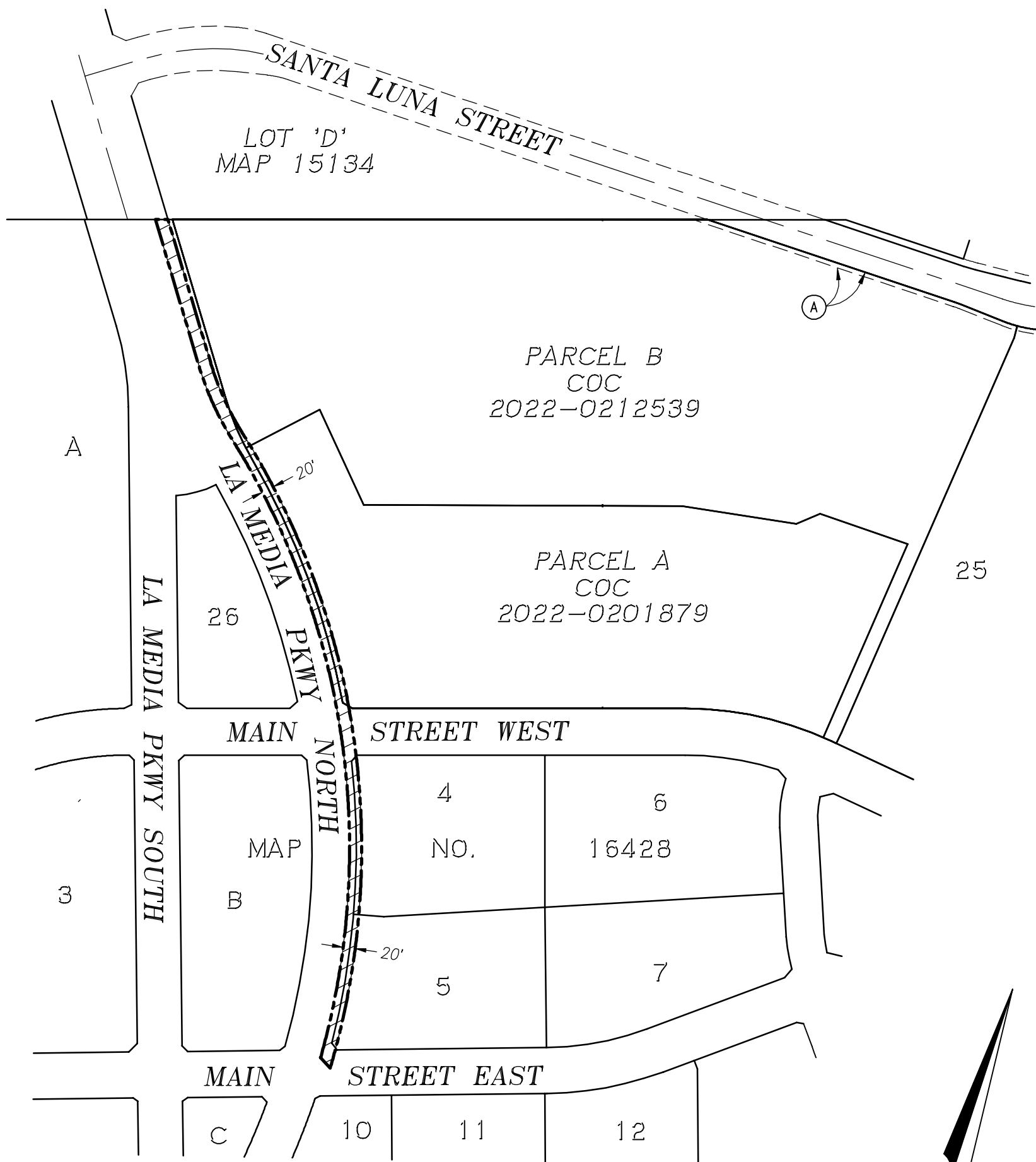
RESOLUTION NO. CM-7252  
 ADOPTED: AUGUST 4, 2023  
 DOCUMENT NO. 2023-0223715, O.R.  
 RECORDED: AUGUST 17, 2023

R:\1691\&Map\Easements\Vacation\VACA Access Esmt SHT 01.dwg 2395-61

**ACCESS EASEMENT VACATION**  
 POR. OF LOTS 4 AND 5 OF MAP NO. 16428, MAIN STREET WEST, MAIN STREET EAST,  
 AND LA MEDIA PARKWAY NORTH PER SAID MAP,  
 PCL A COC 2022-0201879 AND PCL B COC 2022-0212539

DESCRIPTION	BY	APPROVED	DATE	FILMED	CITY OF SAN DIEGO, CALIFORNIA	PRJ-1065388
ORIGINAL	XXX				SHEET 1 OF 2 SHEETS	I.O. <u>N/A</u>
					FOR CITY LAND SURVEYOR	<u>1798-6335</u> CCS 83 COORDINATES
					DATE <span style="border: 1px solid black; padding: 2px;">6/13/2023</span>	<u>158-1775</u> NAD 27 COORDINATES
<b>VACATED</b>					STATUS	100508-1-B
						B001

EXHIBIT "B"



ACCESS EASEMENT VACATION  
 POR. OF LOTS 4 AND 5 OF MAP NO. 16428, MAIN STREET WEST, MAIN STREET EAST,  
 AND LA MEDIA PARKWAY NORTH PER SAID MAP,  
 PCL A COC 2022-0201879 AND PCL B COC 2022-0212539

DESCRIPTION	BY	APPROVED	DATE	FILMED	CITY OF SAN DIEGO, CALIFORNIA	
ORIGINAL	XXX				PRJ-1065388	
					SHEET 2 OF 2 SHEETS	
					I.O. N/A	
					1798-6335	
					CCS 83 COORDINATES	
					158-1775	
					NAD 27 COORDINATES	
<b>VACATED</b>						100508-2-B
STATUS						B002