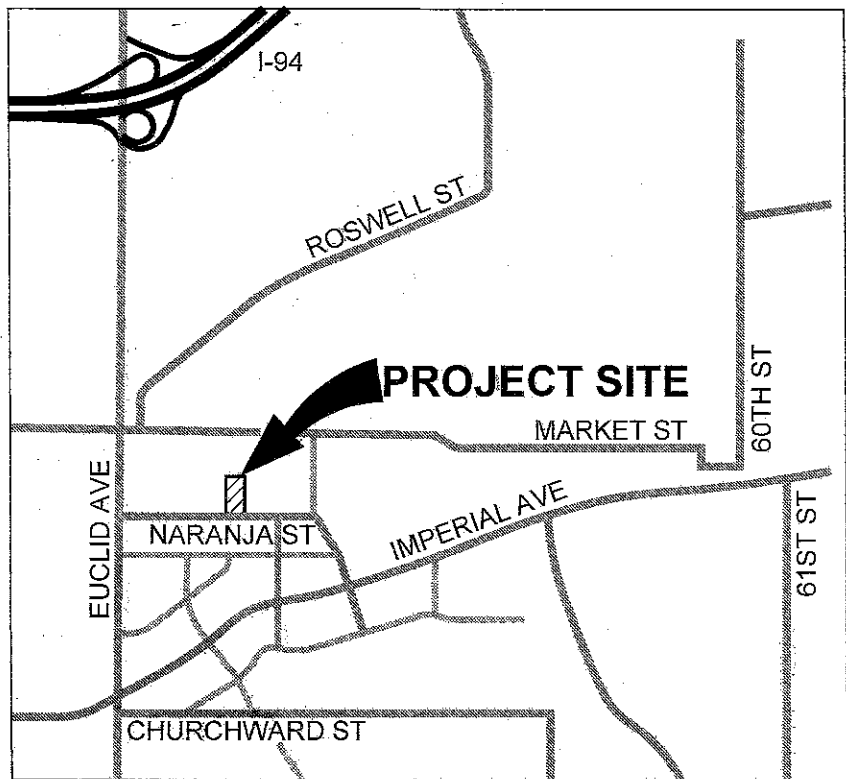


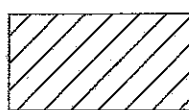
EXHIBIT 'B'



VICINITY MAP
NOT TO SCALE

LEGEND

- SUBDIVISION BOUNDARY/SHEET BORDER
- LOT LINE
- CENTER LINE



INDICATES 2' WIDE PUBLIC STREET EASEMENT ACQUIRED
AREA = 254 SQ. FT. (0.00583 ACRES)

APN

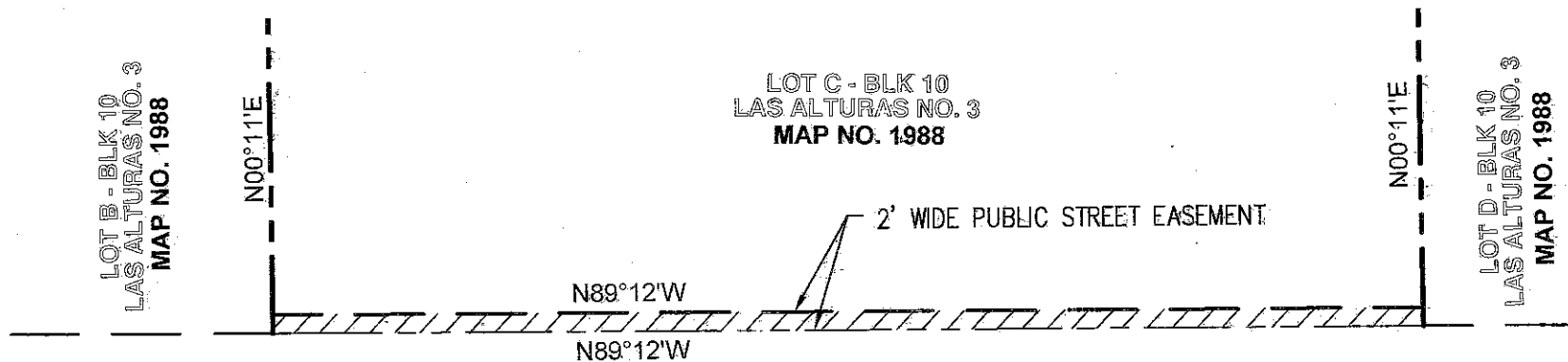
548-051-10

REFERENCES

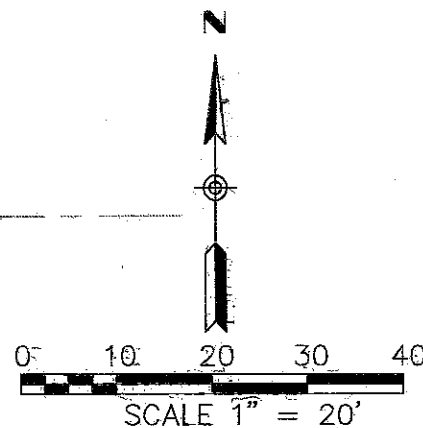
- MAP No. 1988
- DWG. 100612-5-D
- DWG. 100612-7-D

BASIS OF BEARINGS

BEING THE CENTERLINE OF NARANJA STREET,
I.E., N89°12'W, PER MAP NO. 1988



NARANJA STREET
AS DEDICATED PER MAP NO. 1988
(BASIS OF BEARINGS) N89°12'W



ATLAS CIVIL DESIGN
872 HIGUERA STREET
SAN LUIS OBISPO, CA
(760) 718-8010



DOCUMENT No. 2023-0107910, O.R.

RECORDED APRIL 25, 2023

[Signature] 4/14/23
ARNOLD J. WHITAKER P.L.S. 7883 DATE

PUBLIC STREET EASEMENT – NARANJA STREET
LOT C, BLOCK 10, MAP NO. 1988

DESCRIPTION	BY	APPROVED	DATE	FILMED	CITY OF SAN DIEGO, CALIFORNIA	PRJ: 1074867
ORIGINAL	ATLAS				SHEET 1 OF 1 SHEET	I.O. N/A
					<i>[Signature]</i> FOR CITY LAND SURVEYOR	1838-6303 LAMBERT COORDINATES
					DATE <u>4/25/2023</u>	198-1743 NAD 83 COORDINATES
STATUS					100613-1-B	B001