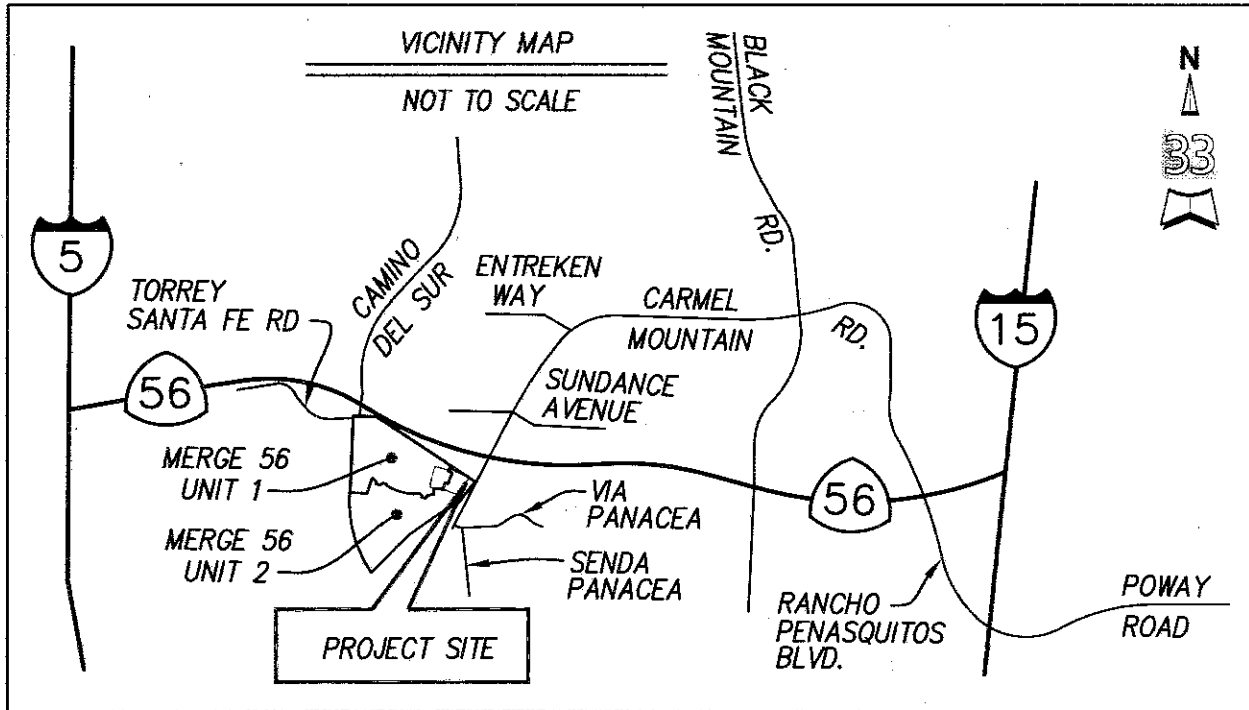


EXHIBIT "B"



ASSESSOR'S PARCEL NO.

306-424-32

REFERENCE DWG.'S

MAP 16433 PM 21924
MAP 16457 IMP. PLANS 40590-D

BASIS OF BEARINGS

THE BASIS OF BEARINGS FOR THIS PLAT IS A PORTION OF THE EASTERLY LINE OF PARCEL 4 AS SHOWN ON PARCEL MAP NO. 21924.

I.E. NORTH 37°46'03" EAST

LEGEND

- WATER EASEMENT, ACQUIRED
AREA = 127 SQ. FT.
- RIGHT-OF-WAY LINE
- LOT LINE
- EASEMENT LINE
- INDICATES ABUTTER'S RIGHTS OF ACCESS RELINQUISHED PER CALTRANS RIGHT OF WAY MAP NO. 41010.2M
- INDICATES ABUTTER'S RIGHTS OF ACCESS RELINQUISHED PER MAP NO. 16457
- P.O.C. POINT OF COMMENCEMENT
- T.P.O.B. TRUE POINT OF BEGINNING
- P.O.T. POINT OF TERMINUS
- () RECORD DATA PER PM 21924
- DRAINAGE EASEMENT GRANTED PER MAP 16457
- PORTION OF CARMEL MOUNTAIN ROAD DEDICATED PER MAP 16457
- SHARED VAULT FOR STORMWATER FACILITIES PER DOCUMENT RECORDED SEPTEMBER 30, 2021 AS DOC. NO. 2021-0688904 O.R.

LATITUDE 33 PLANNING & ENGINEERING
9968 HIBERT STREET, SECOND FLOOR
SAN DIEGO, CA 92131 (858) 751-0633

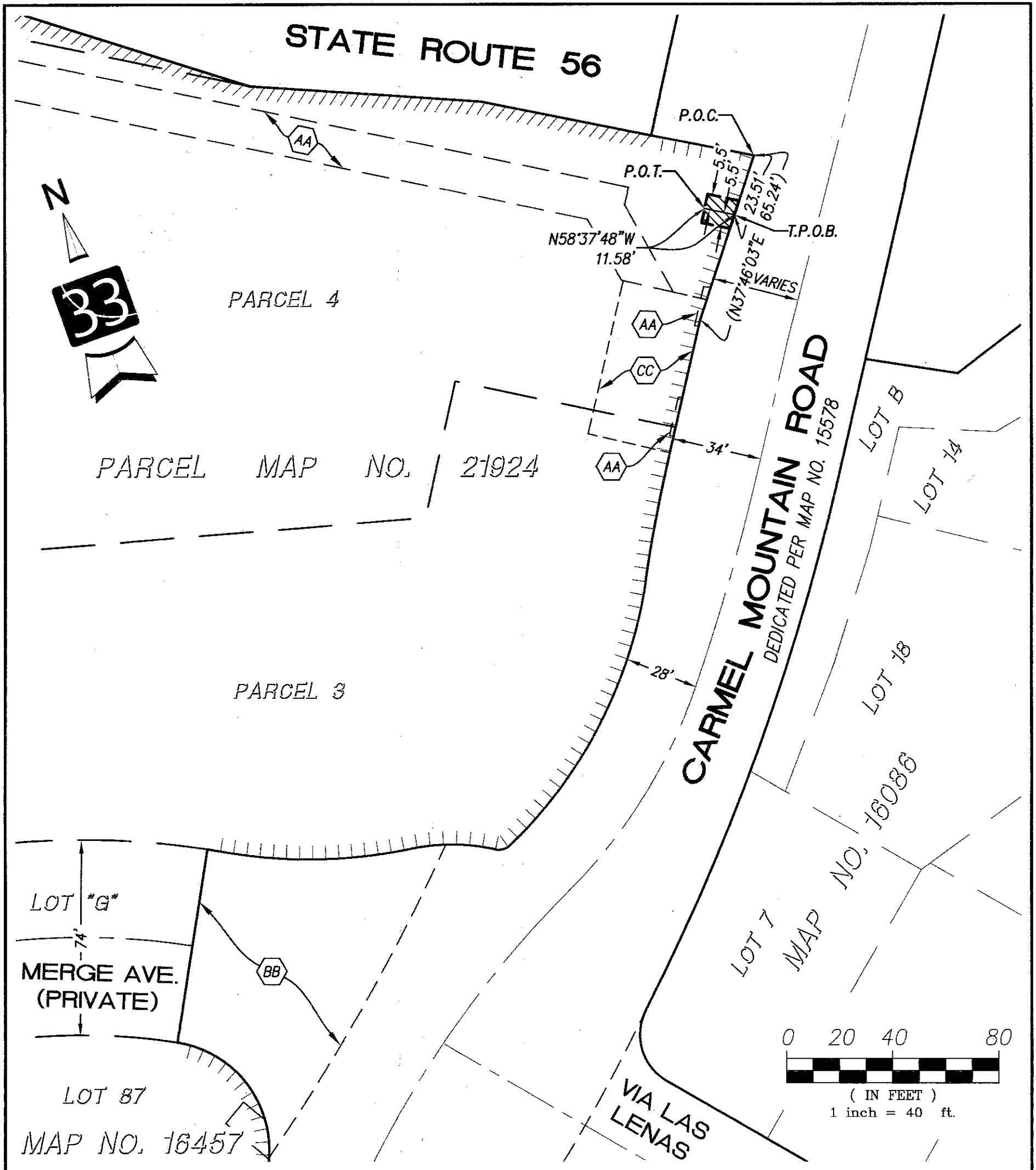
GEOFFREY V. HOWLAND DATE
P.L.S. 9011



DOCUMENT No. 2023-0116707 O.R.
RECORDED MAY 4, 2023

WATER EASEMENT WITHIN PARCEL 4 OF PARCEL MAP NO. 21924

DESCRIPTION	BY	APPROVED	DATE	FILMED	CITY OF SAN DIEGO, CALIFORNIA SHEET 1 OF 2 SHEETS	PRJ. 1076438 PMT. 3188304
ORIGINAL	L33					
					<i>Frank R. ...</i> FOR CITY LAND SURVEYOR	1936-6303 CCS 83 COORDINATES
					4/19/2023 DATE	296-1743 NAD 27 COORDINATES
					STATUS	100658-1-B B001



LATITUDE 33 PLANNING & ENGINEERING
 9968 HIBERT STREET, SECOND FLOOR
 SAN DIEGO, CA 92131 (858) 751-0633



DOCUMENT No. 2023-0116707 O.R.

RECORDED MAY 4, 2023

Geoffrey V. Howland
 GEOFFREY V. HOWLAND
 P.L.S. 9011

3/2/2023
 DATE

WATER EASEMENT

WITHIN PARCEL 4 OF PARCEL MAP NO. 21924

DESCRIPTION	BY	APPROVED	DATE	FILMED	CITY OF SAN DIEGO, CALIFORNIA	
ORIGINAL	L33				SHEET 2 OF 2 SHEETS	
					PRJ. 1076438 PMT. 3188304	
					1936-6303 CCS 83 COORDINATES	
					296-1743 NAD 27 COORDINATES	
					100658-2-B	
					B002	
STATUS						