

EXHIBIT B

REFERENCE DRAWINGS:

ASSESSOR'S PARCEL NO.:

EASEMENT LEGEND:

COC DOC# 2021-0609970
MAP 6102 100154-D
42432-U








APN 437-350-11

EXISTING EASEMENT AS NOTED IN EASEMENT LEGEND ON SHEET 2.

DEDICATION LEGEND:

HISTORIC RIGHTS-OF-WAY AS NOTED IN DEDICATION LEGEND ON SHEET 2.

LEGEND:

-  INDICATES STREET DEDICATION ACQUIRED
-  AREA = 2,041 SQUARE FEET
-  BOUNDARY LINE
-  CENTERLINE
-  EASEMENT LINE
-  ADJACENT PROPERTY LINE
-  HISTORIC ROW LINE

LINE & CURVE TABLE:

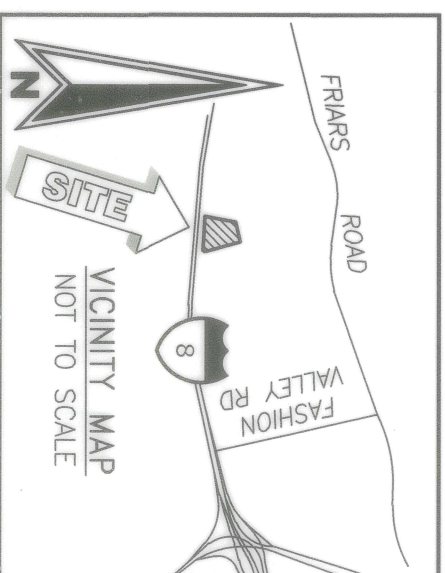
LINE & CURVE TABLE SHOWN ON SHEET 2.

MONUMENT LEGEND:

MONUMENT LEGEND SHOWN ON SHEET 2.

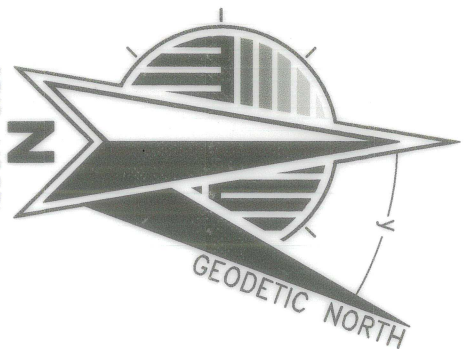
BASIS OF BEARINGS:

THE BASIS OF BEARINGS FOR THIS SURVEY IS THE CALIFORNIA COORDINATE SYSTEM, CCS83, ZONE 6, EPOCH 2017.50, AND IS DETERMINED BY GPS MEASUREMENTS TAKEN ON NOVEMBER 10, 2021 AT POINTS "A" AND "B" AS SHOWN HEREON. POINTS "A" AND "B" WERE ESTABLISHED FROM GPS STATION P475 AND GPS STATION P472 AS PUBLISHED BY THE CALIFORNIA SPATIAL REFERENCE CENTER, THE BEARING FROM POINT "A" TO POINT "B" IS S87°23'18"E.



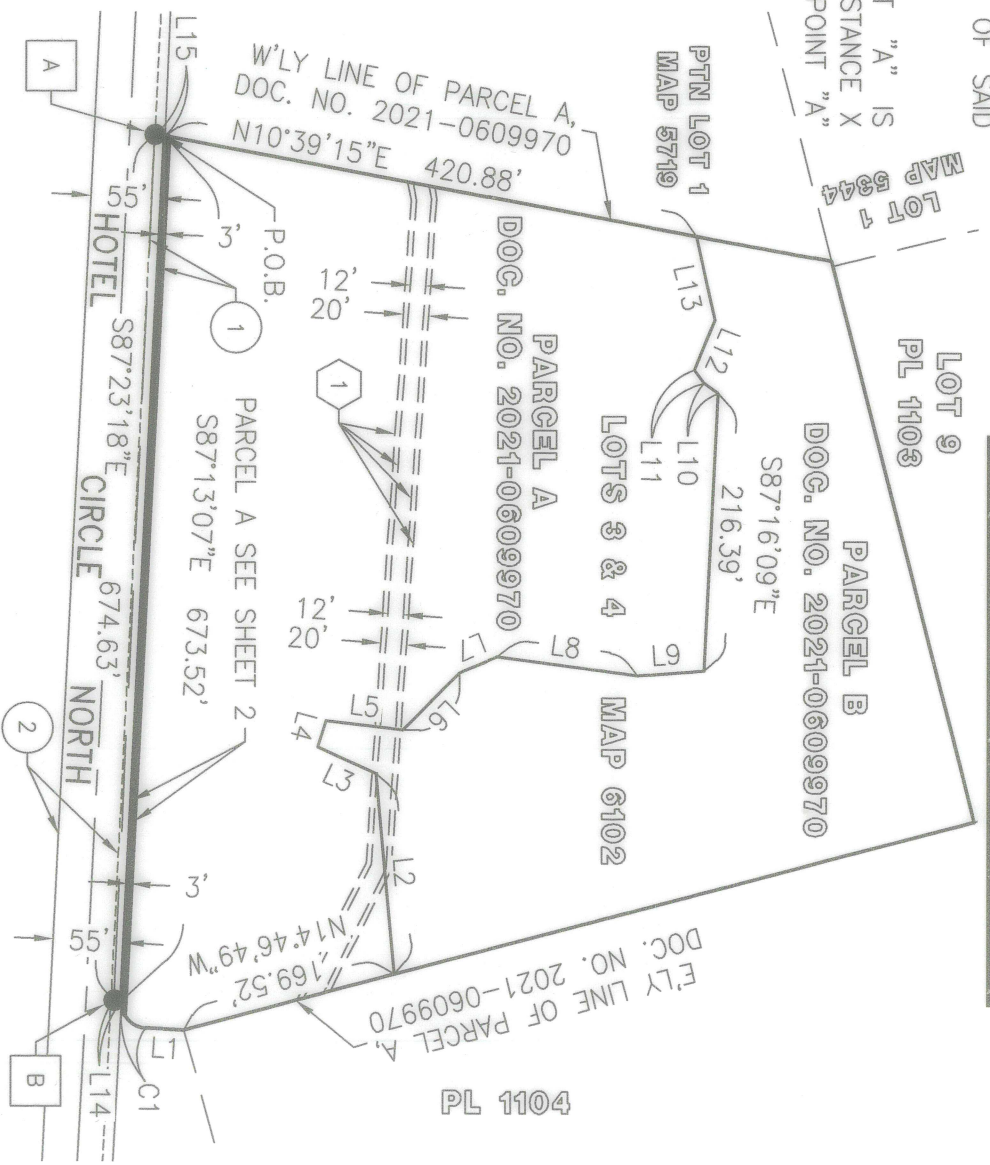
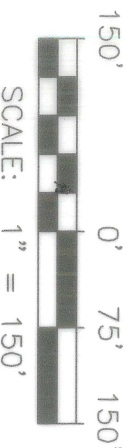
QUOTED BEARINGS FROM REFERENCE MAPS OR DEEDS MAY OR MAY NOT BE IN TERMS OF SAID SYSTEM.

THE COMBINED GRID FACTOR AT POINT "A" IS 1.0000075. GRID DISTANCE = GROUND DISTANCE X COMBINED GRID FACTOR. ELEVATION AT POINT "A" IS 21.86 FEET (NGVD29).



CONVERGENCE ANGLE AT A

$$\gamma = -0^{\circ}30'45.65''$$



FUSCOE ENGINEERING
6390 Greenwch Dr., Suite 170, San Diego, California 92122
tel 858.584.1500 o fax 858.597.0335 o www.fuscoe.com
J. MARTY SMITH, LS 8070
DATE 07/18/2023



DOCUMENT NO.: 2023-0211040
RECORDED: Aug 04, 2023

PUBLIC STREET EASEMENT
OVER PORTIONS OF PARCEL A, DOCUMENT NO. 2021-0609970
BEING A PORTION OF LOTS 3 & 4 OF MAP NO. 6102

DESCRIPTION	BY	APPROVED	DATE	FILMED	CITY OF SAN DIEGO, CALIFORNIA	PRJ-1076872
ORIGINAL	FEI	S.O.	8/4/23		SHEET 1 OF 2	PMT-3189492

FOR LAND SURVEYOR	DATE	CCS 83 COORDINATES
Stark R. All	8/3/2023	1856-6283
		216-1713
		NAD 27 COORDINATES

STATUS	100666-1-B	B001
--------	------------	------

ACQUIRED

EXHIBIT B

DEDICATION LEGEND:

- 1 A PORTION OF HOTEL CIRCLE NORTH DEDICATED PER MAP NO. 6102.
- 2 A PORTION OF HOTEL CIRCLE NORTH ACQUIRED BY THE STATE OF CALIFORNIA PER DOCUMENT RECORDED MAY 20, 1958 AS BOOK 7088, PAGE 11 OF OFFICIAL RECORDS AND RELINQUISHED TO THE CITY OF SAN DIEGO PER BOOK 8046, PAGE 582 THROUGH 589. RECORDED DECEMBER 15, 1959 OF OFFICIAL RECORDS.

EASEMENT LEGEND:

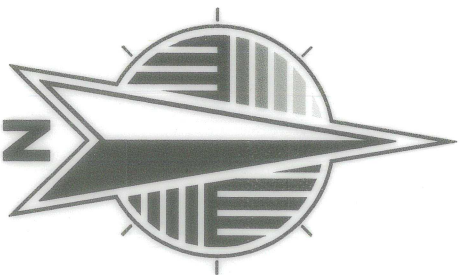
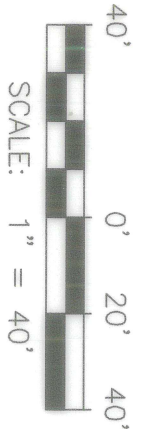
- 1 AN EASEMENT GRANTED TO THE CITY OF SAN DIEGO, A MUNICIPAL CORPORATION FOR PUBLIC SEWER AND INCIDENTAL PURPOSES RECORDED FEBRUARY 18, 1946 AS BOOK 2050, PAGE 224 OF OFFICIAL RECORDS. SAID EASEMENT WAS MODIFIED AND WIDENED BY DEDICATION ON SUBDIVISION MAP 6102.

MONUMENT LEGEND:

- A FOUND LEAD, TACK & TAG "LS 6637", NO REFERENCE.
N: 1857512.88
E: 6274846.37
- B FOUND LEAD, TACK & TAG "LS 4768", PER CORNER
RECORD NO. 30779.
N: 1857482.14
E: 6275520.30

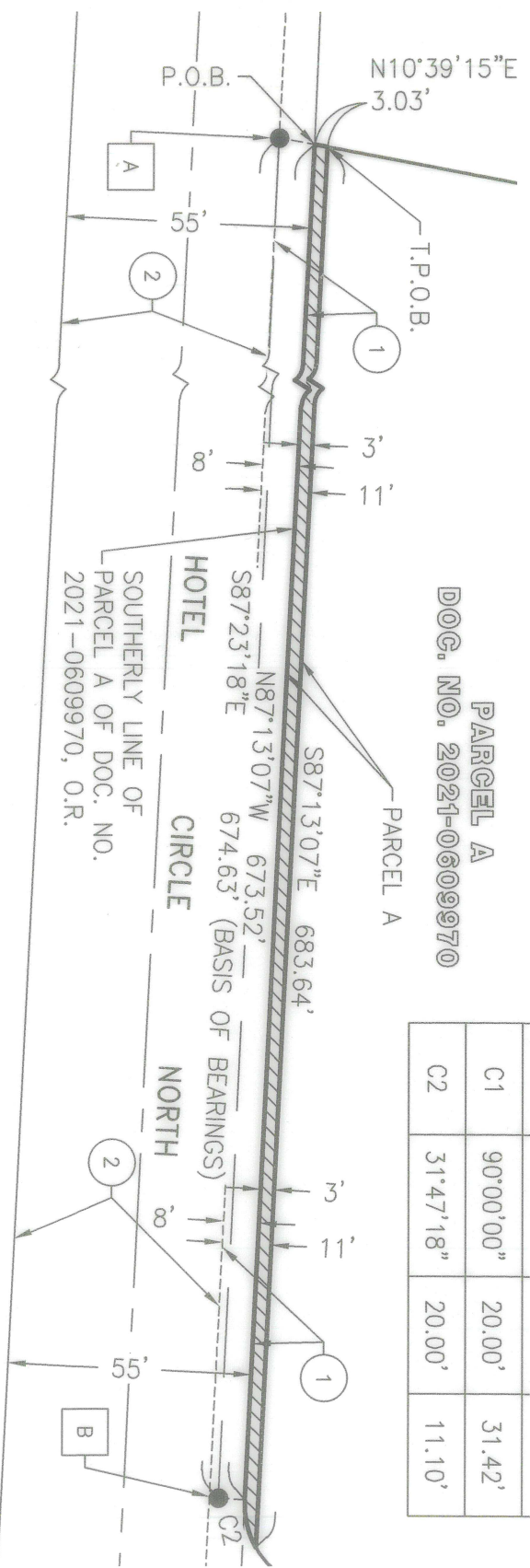
LINE TABLE		
LINE	BEARING	DISTANCE
L1	N02°46'53"E	29.77'
L2	N84°35'20"E	156.56'
L3	N24°25'10"E	49.51'
L4	N73°46'44"W	21.70'
L5	N06°43'08"E	60.49'
L6	N45°16'47"W	62.69'
L7	N22°05'29"W	31.34'
L8	N07°28'51"E	109.73'

LINE TABLE		
LINE	BEARING	DISTANCE
L9	N04°06'01"W	52.31'
L10	N36°19'26"E	13.32'
L11	N53°23'42"E	12.85'
L12	N67°52'14"W	41.97'
L13	N77°25'35"E	66.55'
L14	N02°46'53"E	6.00'
L15	N10°39'15"E	8.08'



PARCEL A
DOC. NO. 2021-0609970

CURVE TABLE			
CURVE	DELTA	RADIUS	LENGTH
C1	90°00'00"	20.00'	31.42'
C2	31°47'18"	20.00'	11.10'



FUSCOE
E N G I N E E R I N G
6390 Greenwich Dr., Suite 170, San Diego, California 92122
tel 858.554.1500 • fax 858.597.0335 • www.fuscoe.com

DOCUMENT NO.: 2023-0211040
RECORDED: Apr 04, 2023

PUBLIC STREET EASEMENT OVER PORTIONS OF PARCEL A, DOCUMENT NO. 2021-0609970 BEING A PORTION OF LOTS 3 & 4 OF MAP NO. 6102

DESCRIPTION	BY	APPROVED	DATE	FILMED	CITY OF SAN DIEGO, CALIFORNIA SHEET 2 OF 2	PRJ-1076872 PMT-3189492
ORIGINAL	FEI	S.O.	8/14/23			
FOR LAND SURVEYOR						
			8/13/2023			
		DATE		1856-6283		
				CCS 83 COORDINATES		
				216-1713		
				NAD 27 COORDINATES		
<i>ACQUIRER</i>						100666-2-B
STATUS						B002