

EXHIBIT B

REFERENCE DRAWINGS: **ASSESSOR'S PARCEL NO.:**

COC DOC# 2021-0609970 APN 437-350-11
 MAP 6102 42432-U
 PRJ-1046782

EASEMENT LEGEND:

EXISTING EASEMENT AS NOTED IN EASEMENT LEGEND ON SHEET 3.

DEDICATION LEGEND:

HISTORIC RIGHTS-OF-WAY AS NOTED IN DEDICATION LEGEND ON SHEET 3.

LINE & CURVE TABLE:

LINE & CURVE TABLE SHOWN ON SHEET 3.

MONUMENT LEGEND:

MONUMENT LEGEND SHOWN ON SHEET 3.

LEGEND:

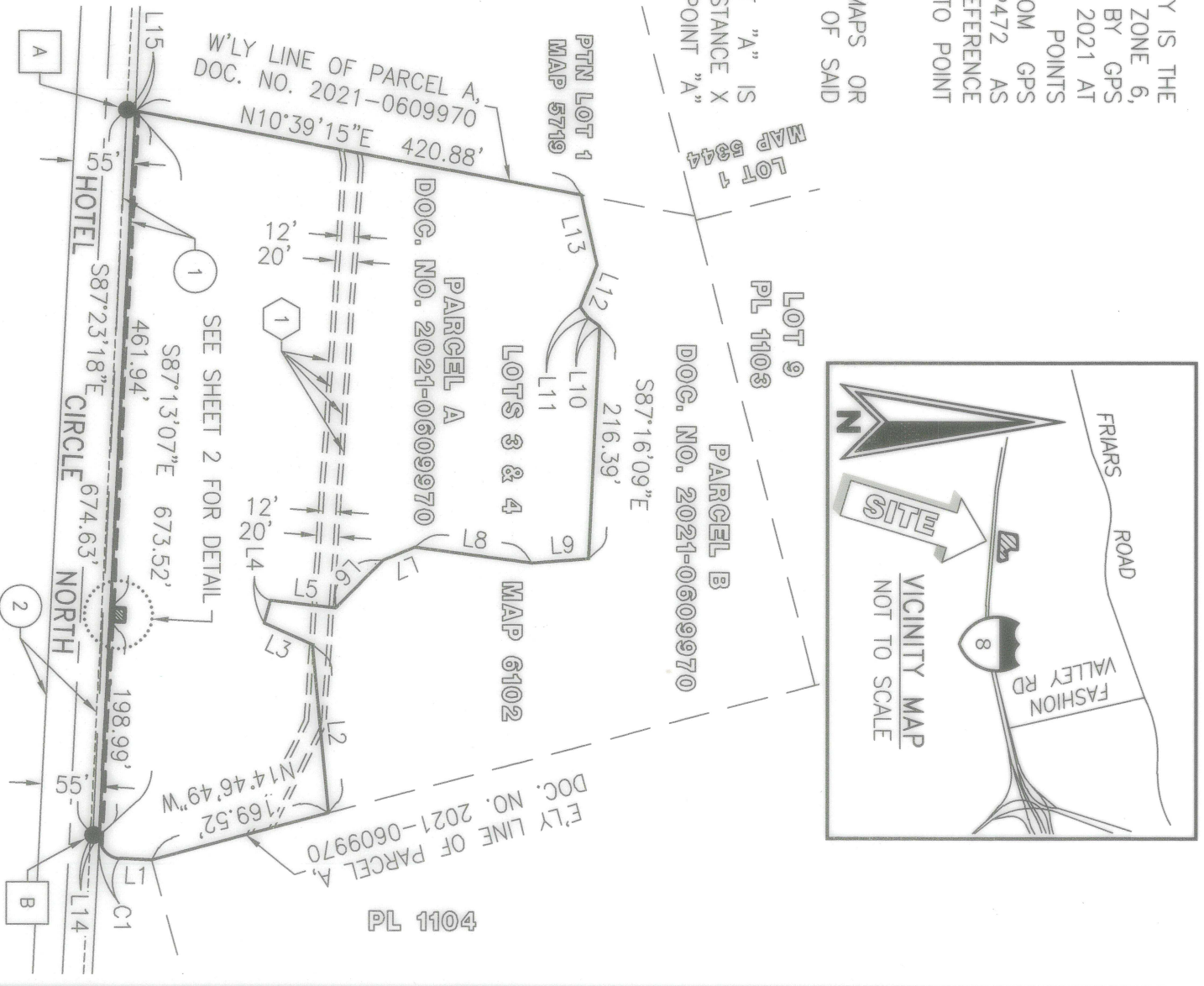
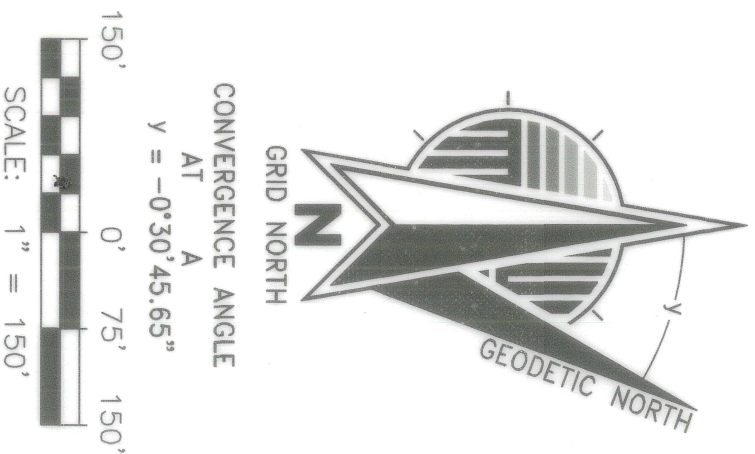
- INDICATES WATER EASEMENT ACQUIRED
- AREA = 2,041 SQUARE FEET
- BOUNDARY LINE
- CENTERLINE
- EASEMENT LINE
- ADJACENT PROPERTY LINE
- HISTORIC ROW LINE

BASIS OF BEARINGS:

THE BASIS OF BEARINGS FOR THIS SURVEY IS THE CALIFORNIA COORDINATE SYSTEM, CCS83, ZONE 6, EPOCH 2017.50, AND IS DETERMINED BY GPS MEASUREMENTS TAKEN ON NOVEMBER 10, 2021 AT POINTS "A" AND "B" AS SHOWN HEREON. POINTS "A" AND "B" WERE ESTABLISHED FROM GPS STATION P475 AND GPS STATION P472 AS PUBLISHED BY THE CALIFORNIA SPATIAL REFERENCE CENTER, THE BEARING FROM POINT "A" TO POINT "B" IS S87°23'18"E.

QUOTED BEARINGS FROM REFERENCE MAPS OR DEEDS MAY OR MAY NOT BE IN TERMS OF SAID SYSTEM.

THE COMBINED GRID FACTOR AT POINT "A" IS 1.0000075. GRID DISTANCE = GROUND DISTANCE X COMBINED GRID FACTOR. ELEVATION AT POINT "A" IS 21.86 FEET (NGVD29).



FUSCOE ENGINEERING
 6390 Greenwich Dr., Suite 170, San Diego, California 92122
 tel 858.564.1500 fax 858.597.0335 www.fuscoe.com

J. MARTY SMITH, LS 8070 07/11/2023 DATE

LICENSED LAND SURVEYOR
 J. MARTY SMITH
 8070
 STATE OF CALIFORNIA

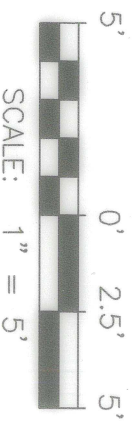
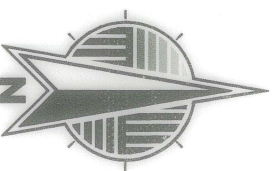
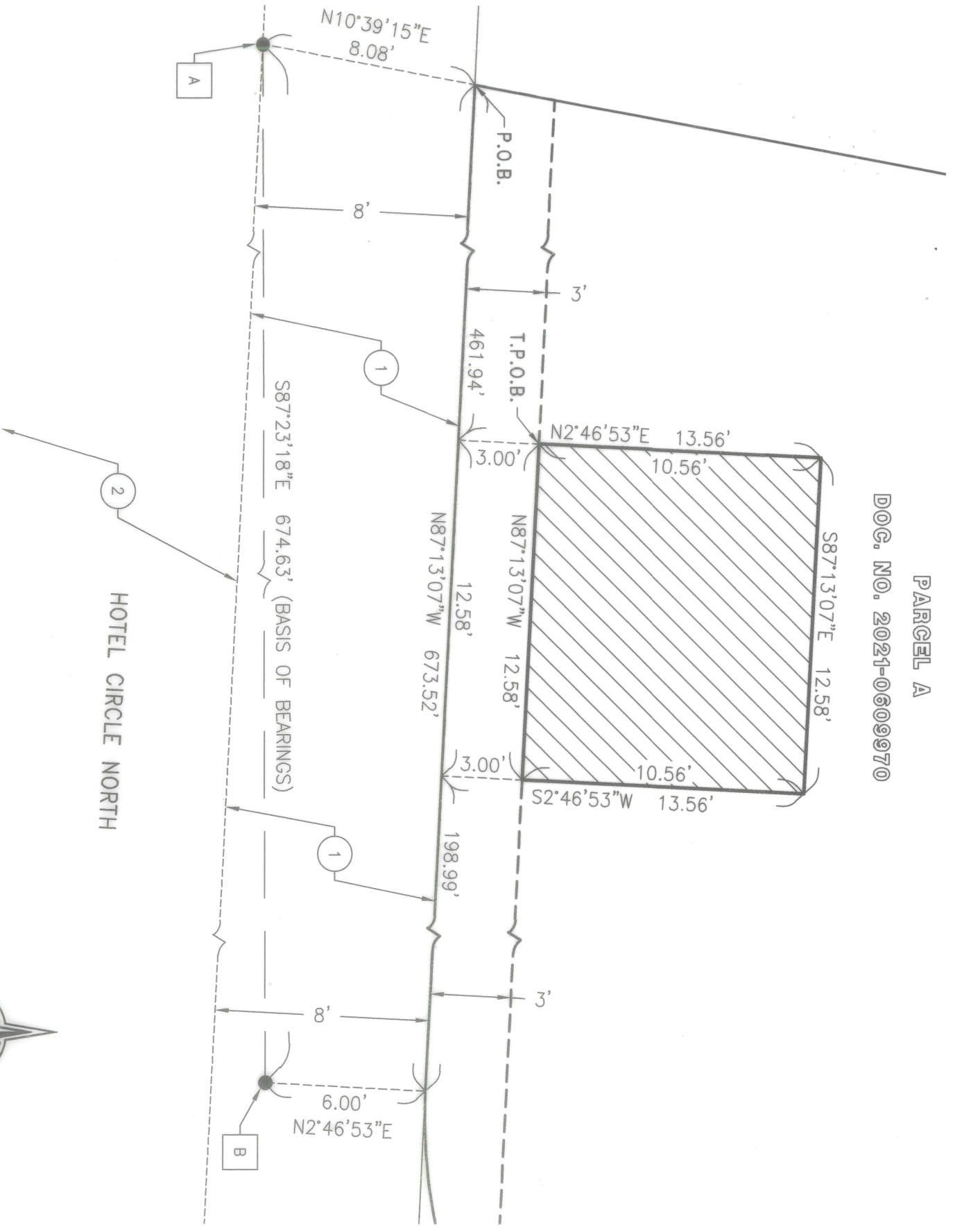
DOCUMENT NO.: **2023-0211041**
 RECORDED: **AUG 04, 2023**

PUBLIC WATER EASEMENT
OVER PORTIONS OF PARCEL A, DOCUMENT NO. 2021-0609970
BEING A PORTION OF LOTS 3 & 4 OF MAP NO. 6102

DESCRIPTION	BY	APPROVED	DATE	FILMED	CITY OF SAN DIEGO, CALIFORNIA SHEET 1 OF 3	PRJ-1071727 PMT-3189512
ORIGINAL	FEI	S.O.	8/4/2023		Scale R. RB FOR LAND SURVEYOR	1856-6283
					DATE	CCS 83 COORDINATES 216-1713
						NAD 27 COORDINATES
ACCURATED						100667-1-B
					STATUS	B001

EXHIBIT B

PARGEL A
 DOC. NO. 2021-0609970



FUSCOE
 ENGINEERING
 6390 Greenwch Dr., Suite 170, San Diego, California 92122
 tel 858.554.1500 • fax 858.597.0335 • www.fuscoe.com

DOCUMENT NO.: 2023-0211041
 RECORDED: Aug 04, 2023

PUBLIC WATER EASEMENT
 OVER PORTIONS OF PARCEL A, DOCUMENT NO. 2021-0609970
 BEING A PORTION OF LOTS 3 & 4 OF MAP NO. 6102

DESCRIPTION	BY	APPROVED	DATE	FILMED	CITY OF SAN DIEGO, CALIFORNIA SHEET 2 OF 3	PRJ-1071727 PMT-3189512
ORIGINAL	FEI	S.O.	8/4/2023			
					FOR LAND SURVEYOR <i>Yulee R. King</i>	1856-6283
					DATE 8/3/2023	CCS 83 COORDINATES 216-1713
						NAD 27 COORDINATES
ACQUIRED					STATUS	100667-2-B
						B002

EXHIBIT B

DEDICATION LEGEND:

- 1 A PORTION OF HOTEL CIRCLE NORTH DEDICATED PER MAP NO. 6102.
- 2 A PORTION OF HOTEL CIRCLE NORTH ACQUIRED BY THE STATE OF CALIFORNIA PER DOCUMENT RECORDED MAY 20, 1958 AS BOOK 7088, PAGE 11 OF OFFICIAL RECORDS AND RELINQUISHED TO THE CITY OF SAN DIEGO PER BOOK 8046, PAGE 582 THROUGH 589 RECORDED DECEMBER 15, 1959 OF OFFICIAL RECORDS.

EASEMENT LEGEND:

- 1 AN EASEMENT GRANTED TO THE CITY OF SAN DIEGO, A MUNICIPAL CORPORATION FOR PUBLIC SEWER AND INCIDENTAL PURPOSES RECORDED FEBRUARY 18, 1946 AS BOOK 2050, PAGE 224 OF OFFICIAL RECORDS. SAID EASEMENT WAS MODIFIED AND WIDENED BY DEDICATION ON SUBDIVISION MAP 6102.

MONUMENT LEGEND:

- A FOUND LEAD, TACK & TAG "LS 6637", NO REFERENCE.
N: 1857512.88
E: 6274846.37
- B FOUND LEAD, TACK & TAG "LS 4768", PER CORNER
RECORD NO. 30779.
N: 1857482.14
E: 6275520.30

CURVE TABLE			
CURVE	DELTA	RADIUS	LENGTH
C1	90°00'00"	20.00'	31.42'

LINE TABLE		
LINE	BEARING	DISTANCE
L1	N02°46'53"E	29.77'
L2	N84°35'20"E	156.56'
L3	N24°25'10"E	49.51'
L4	N73°46'44"W	21.70'
L5	N06°43'08"E	60.49'
L6	N45°16'47"W	62.69'
L7	N22°05'29"W	31.34'
L8	N07°28'51"E	109.73'
L9	N04°06'01"W	52.31'
L10	N36°19'26"E	13.32'
L11	N53°23'42"E	12.85'
L12	N67°52'14"W	41.97'
L13	N77°25'35"E	66.55'
L14	N02°46'53"E	6.00'
L15	N10°39'15"E	8.08'



FUSCOE
ENGINEERING

6390 Greenwch Dr., Suite 170, San Diego, California 92122
tel 858.554.1500 • fax 858.597.0335 • www.fuscoe.com

DOCUMENT NO.: 2023-0211041
RECORDED: Aug 4, 2023

PUBLIC WATER EASEMENT
OVER PORTIONS OF PARCEL A, DOCUMENT NO. 2021-0609970
BEING A PORTION OF LOTS 3 & 4 OF MAP NO. 6102

DESCRIPTION	BY	APPROVED	DATE	FILMED	CITY OF SAN DIEGO, CALIFORNIA SHEET 3 OF 3	PRJ-1071727 PMT-3189512
ORIGINAL	FEI	S.O.	8/4/2023			
					FOR LAND SURVEYOR <i>Paul H. King</i>	1856-6283
					DATE <i>8/13/2023</i>	CCS 83 COORDINATES
						216-1713
						NAD 27 COORDINATES
ACQUIRED					STATUS	100667-3-B
						B003