

LEGEND









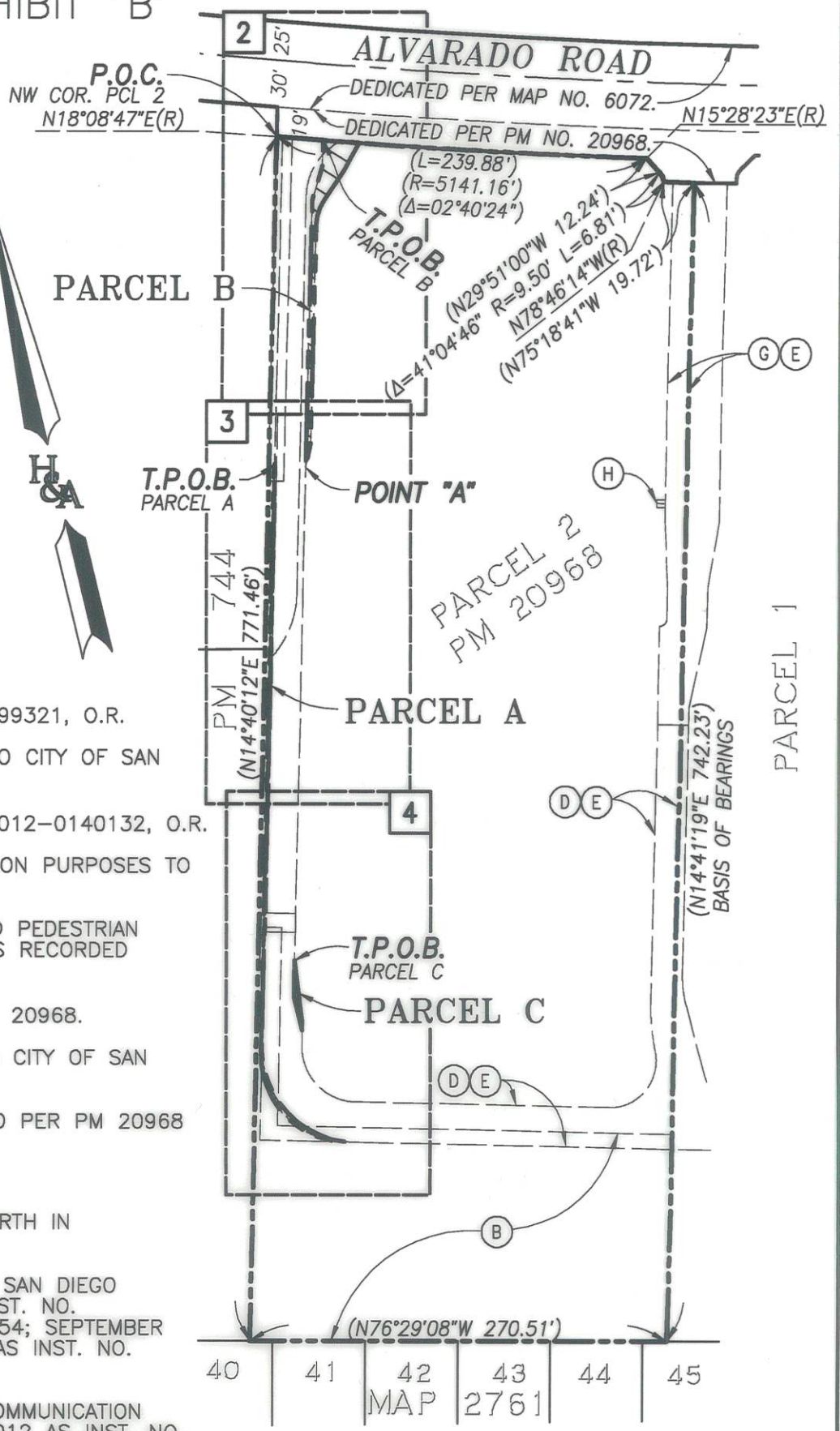
-  PARCEL A - GENERAL UTILITY AND ACCESS EASEMENT ACQUIRED AREA = 0.009 ACRES, MORE OR LESS.
-  PARCEL B - GENERAL UTILITY AND ACCESS EASEMENT ACQUIRED AREA = 0.024 ACRES, MORE OR LESS.
-  PARCEL C - GENERAL UTILITY AND ACCESS EASEMENT ACQUIRED AREA = 0.002 ACRES, MORE OR LESS.
-  BOUNDARY OF UNDERLYING SUBJECT PROPERTY
-  RIGHT OF WAY LINE
-  LOT LINE
-  EASEMENT LINE
-  CENTERLINE
- POC** POINT OF COMMENCEMENT
- TPOB** TRUE POINT OF BEGINNING
- () RECORD DATA PER PM 20968
- 2** SHEET NUMBER (THIS SHEET ONLY)

EXHIBIT "B"



EASEMENTS

- (A) EASEMENT TO SDG&E RECORDED 6/16/1966 AS INST. NO. 99321, O.R.
- (B) EASEMENTS FOR SEWER, WATER AND DRAINAGE PURPOSES TO CITY OF SAN DIEGO PER MAP NO. 6072.
- (C) EASEMENT TO SDG&E RECORDED 3/9/2012 AS INST. NO. 2012-0140132, O.R.
- (D) EASEMENT FOR GENERAL UTILITY AND ACCESS AND RECREATION PURPOSES TO CITY OF SAN DIEGO PER PM 20968.
- (E) GRANT OF RECIPROCAL ACCESS EASEMENT FOR VEHICLE AND PEDESTRIAN INGRESS AND EGRESS AND UTILITY AND DRAINAGE PURPOSES RECORDED 6/28/2013 AS INST. NO. 2013-0408367, O.R.
- (F) RECREATION EASEMENT TO THE CITY OF SAN DIEGO PER PM 20968.
- (G) EASEMENT FOR GENERAL UTILITY AND ACCESS PURPOSES TO CITY OF SAN DIEGO PER PM 20968.
- (H) INDICATES EXISTING WATER EASEMENT TO CITY OF SAN DIEGO PER PM 20968 TO BE VACATED PER DRAWING NUMBER 100378-B.

NON-PLOTTABLE EASEMENTS

THE FOLLOWING EASEMENTS HAVE NO SPECIFIC LOCATION SET FORTH IN DOCUMENT AND ARE NOT PLOTTED HEREON:

EASEMENTS FOR PUBLIC UTILITIES AND INGRESS AND EGRESS TO SAN DIEGO GAS & ELECTRIC COMPANY RECORDED NOVEMBER 1, 2001 AS INST. NO. 2001-0797227; NOVEMBER 13, 2001 AS INST. NO. 2001-0823854; SEPTEMBER 12, 2011 AS INST. NO. 2011-0469857; AND JANUARY 9, 2023 AS INST. NO. 2023-0005342, ALL OF O.R.

EASEMENT FOR INGRESS AND EGRESS AND UNDERGROUND TELECOMMUNICATION FACILITIES TO COX COMMUNICATIONS RECORDED SEPTEMBER 7, 2012 AS INST. NO. 2012-0539915; OCTOBER 24, 2012 AS INST. NO. 2012-0653203; AND NOVEMBER 16, 2022 AS INST. NO. 2022-0493083, ALL O.R.

PRIME HEALTHCARE SERVICES ALVARADO, LLC, HOLDER OF AN EASEMENT FOR ACCESS AND PARKING RECORDED DECEMBER 2, 2010 AS INST. NO. 2010-0662310, O.R.

BASIS OF BEARINGS

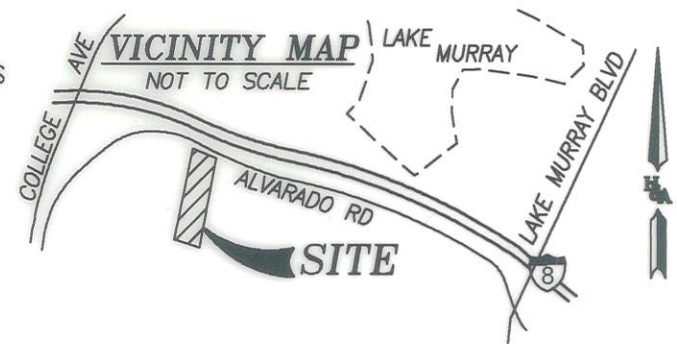
THE BASIS OF BEARINGS FOR THIS DRAWING IS THE EAST LINE OF PARCEL 2 OF PARCEL MAP NO. 20968 FILED APRIL 30, 2012. I.E. N14°41'19"E

REFERENCES

PARCEL MAP NO. 20968, MAP NO. 6072
DWG NO. 100081-D

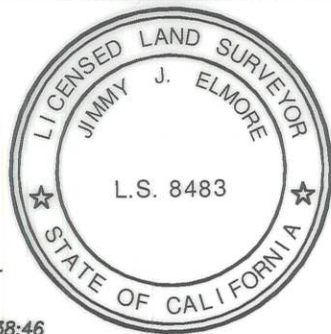
APN

463-590-32



MAP PREPARED BY:

HUNSAKER & ASSOCIATES SAN DIEGO, INC.
9707 WAPLES STREET
SAN DIEGO, CA 92121 (858) 558-4500



[Signature] **8-14-2023**
JIMMY J. ELMORE, L.S. 8483 DATE

R:\1673\&Map\Easements\EP GUA Esmt SHT 01 2023-08-09 10:38:46

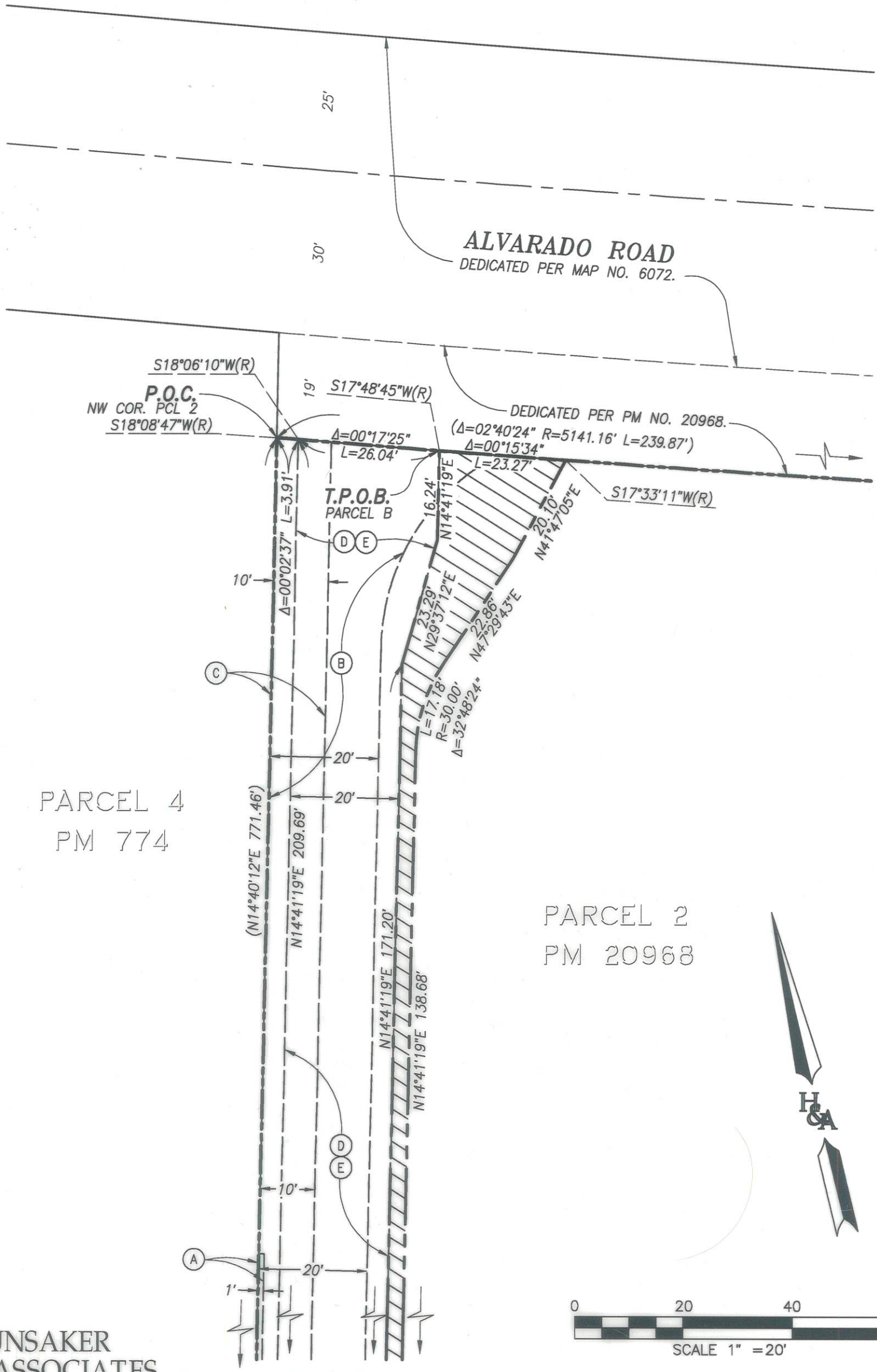
DOCUMENT NO. 2023-0243648

RECORDED SEPTEMBER 7, 2023

GENERAL UTILITY AND ACCESS EASEMENT
PORTIONS OF PARCEL 2 OF PARCEL MAP NO. 20968

DESCRIPTION	BY	APPROVED	DATE	FILMED	CITY OF SAN DIEGO, CALIFORNIA	PRJ NO.: 1071954
ORIGINAL	H&A				SHEET 1 OF 4 SHEETS	PMT. 3192443
					<i>[Signature]</i> FOR CITY LAND SURVEYOR	1862-6311 CCS 83 COORDINATES
					9/6/2023 DATE	222-1751 NAD 27 COORDINATES
					STATUS	100697-1-B
						B001

EXHIBIT "B"



GENERAL UTILITY AND ACCESS EASEMENT
PORTIONS OF PARCEL 2 OF PARCEL MAP NO. 20968

DESCRIPTION	BY	APPROVED	DATE	FILMED	CITY OF SAN DIEGO, CALIFORNIA	
ORIGINAL	H&A				PRJ NO.: 1071954	
					SHEET 2 OF 4 SHEETS	
					PMT. 3192443	
					1862-6311	
					CCS 83 COORDINATES	
					222-1751	
					NAD 27 COORDINATES	
STATUS					100697-2-B	B002

