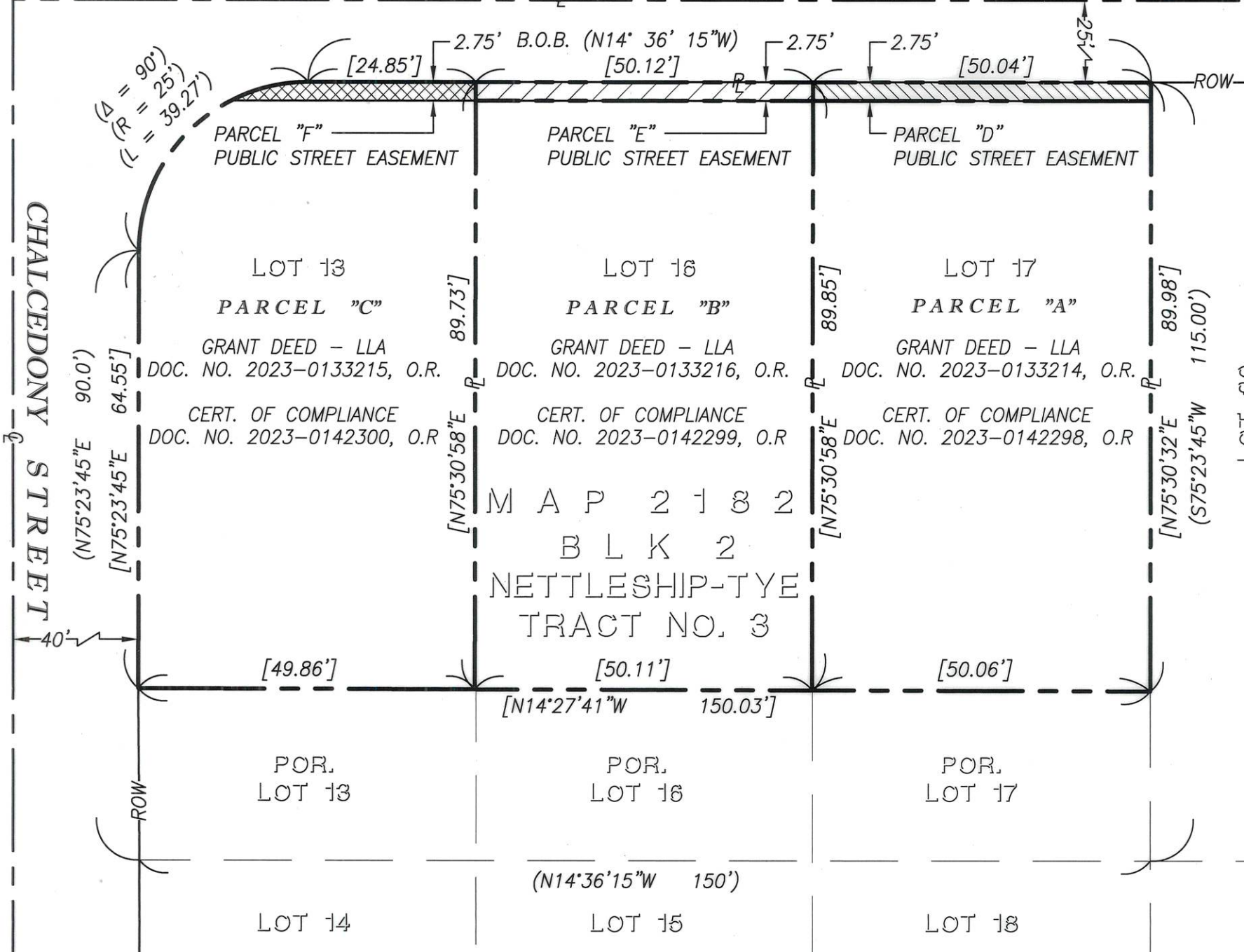


ACADEMY STREET AS DEDICATED PER MAP NO. 2182



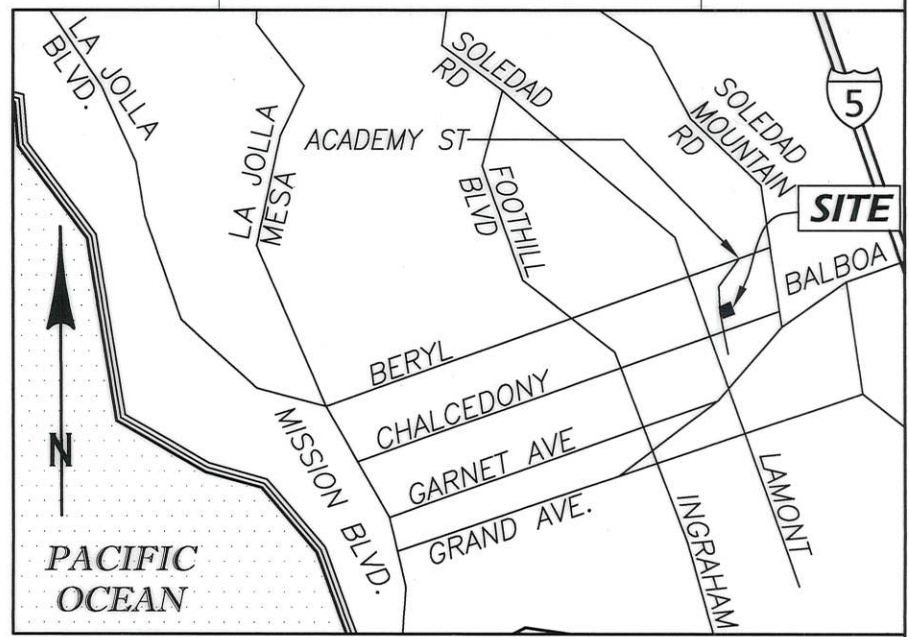
LEGEND

- INDICATES PUBLIC STREET EASEMENT, PARCEL "D"
ACQUIRED AREA= 137.63 SF (0.003 AC.)
- INDICATES PUBLIC STREET EASEMENT, PARCEL "E"
ACQUIRED AREA= 137.81 SF (0.003 AC.)
- INDICATES PUBLIC STREET EASEMENT, PARCEL "F"
ACQUIRED AREA= 89.50 SF (0.002 AC.)
- PROPERTY LINE
- CENTERLINE
- LOT LINE
- ROW RIGHT-OF-WAY LINE

REFERENCE DRAWINGS:
 () INDICATES RECORD DATA PER MAP NO. 2182
 [] INDICATES RECORD DATA PER LOT LINE ADJUSTMENT PLAT 100273-U
 GRADING PLAN D-SHEET NO. 100181-D

BASIS OF BEARING (B.O.B.) STATEMENT:
 THE BASIS OF BEARINGS FOR THE WEST LINE OF LOTS 13,16 AND 7, BLK. 2 MAP NO. 2182, I.E. N14°36'15"W.

ASSESSOR'S PARCEL NUMBERS:
 416-361-21 & 416-361-22



[Signature] 8-16-23
 JOHN S. COFFEY LS 8733
CE COFFEY ENGINEERING, INC.
 9666 BUSINESSPARK AVENUE, SUITE 210
 SAN DIEGO, CA 92131

2023-0238762
 DOCUMENT NO. 2023-0238763
 RECORDED SEPTEMBER 1, 2023

PUBLIC STREET EASEMENT - ACADEMY STREET
 PORTION OF LOTS 13,16,17 OF NETTLESHIP-TYE TRACT NO.3, MAP NO. 2182

DESCRIPTION	BY	APPROVED	DATE	FILMED	CITY OF SAN DIEGO, CALIFORNIA	PRJ 1080556
ORIGINAL	CE				SHEET 1 OF 1 SHEET	I.O. N/A
					<i>[Signature]</i> 8/28/2023	1874-6257
					FOR CITY LAND SURVEYOR DATE	CCS 83 COORDINATES
						234-1697
						NAD 27 COORDINATES
					STATUS	100736-1-B
						B001