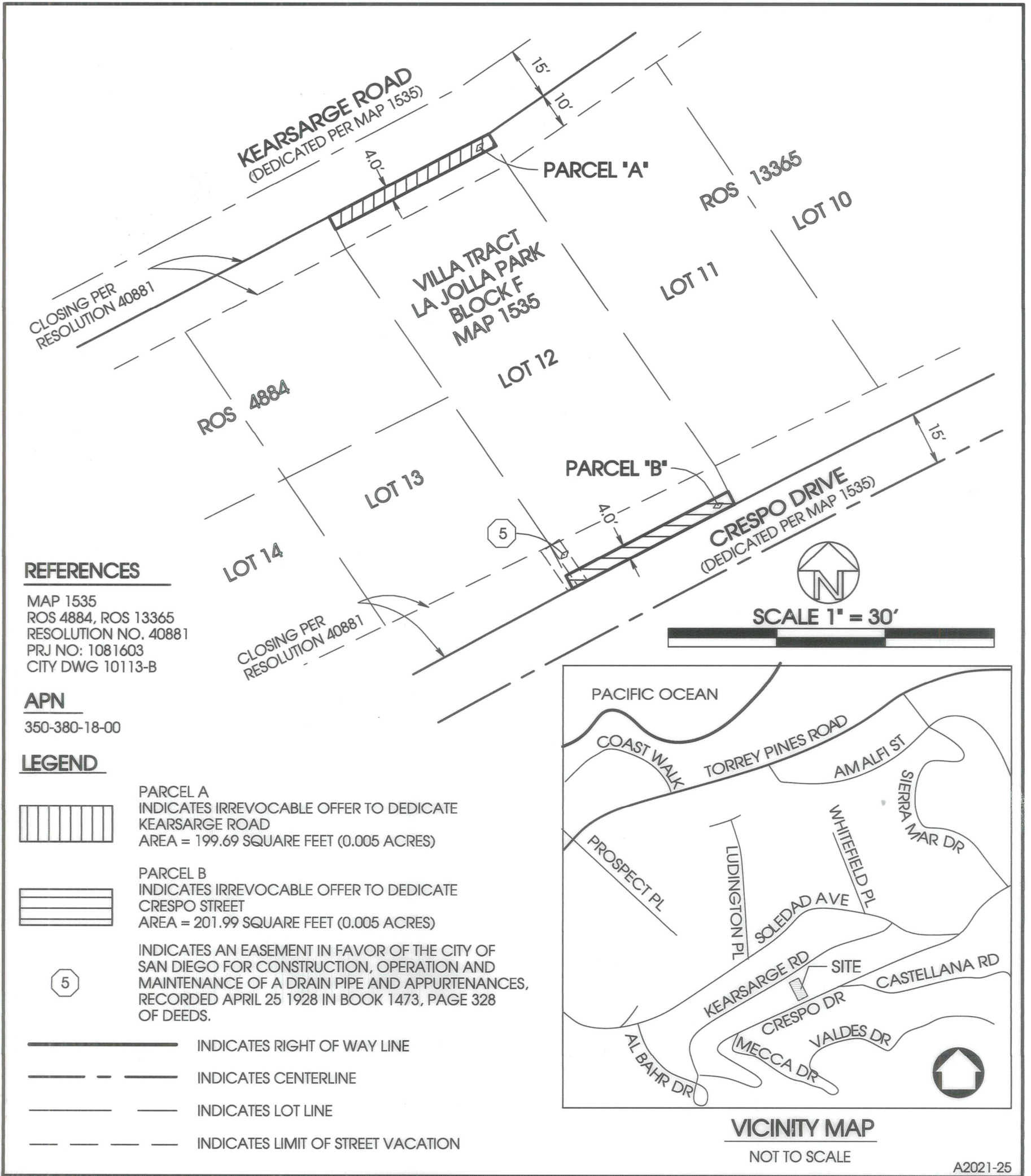


EXHIBIT "B"



REFERENCES

MAP 1535
 ROS 4884, ROS 13365
 RESOLUTION NO. 40881
 PRJ NO: 1081603
 CITY DWG 10113-B

APN

350-380-18-00

LEGEND

- PARCEL A
INDICATES IRREVOCABLE OFFER TO DEDICATE
KEARSARGE ROAD
AREA = 199.69 SQUARE FEET (0.005 ACRES)
- PARCEL B
INDICATES IRREVOCABLE OFFER TO DEDICATE
CRESPO STREET
AREA = 201.99 SQUARE FEET (0.005 ACRES)
- INDICATES AN EASEMENT IN FAVOR OF THE CITY OF
SAN DIEGO FOR CONSTRUCTION, OPERATION AND
MAINTENANCE OF A DRAIN PIPE AND APPURTENANCES,
RECORDED APRIL 25 1928 IN BOOK 1473, PAGE 328
OF DEEDS.
- INDICATES RIGHT OF WAY LINE
- INDICATES CENTERLINE
- INDICATES LOT LINE
- INDICATES LIMIT OF STREET VACATION

CHRISTENSEN ENGINEERING & SURVEYING
 7888 SILVERTON AVENUE, SUITE J
 SAN DIEGO, CA 92126
 (858) 271-9901

Anthony K. Christensen
 09-01-2023
 ANTONY K. CHRISTENSEN DATE
 L.S. 7508, EXPIRES 12-31-23



RESOLUTION NO. _____
 RECORDED SEPTEMBER 7, 2023
 DOCUMENT NO. 2023-0243628

IRREVOCABLE OFFER TO DEDICATE - STREET PURPOSES OVER A PORTION OF LOT 12, BLOCK F, MAP NO. 1535 AS CLOSED PER STREET VACATION RESOLUTION NO. 40881

DESCRIPTION	BY	APPROVED	DATE	FILMED	CITY OF SAN DIEGO, CALIFORNIA	PRJ
ORIGINAL	CE&S				SHEET 1 OF 1 SHEET	1096721
					<i>Frank R. Kelly</i> FOR CITY LAND SURVEYOR	IO NO. _____
					9/6/2023 DATE	1888-6247 CCS 83 COORDINATES
						248-1687 LAMBERT COORDINATES
					101039-B	B001
STATUS						