

PARCEL MAP NO. 14491

PARCEL 2

STREET DEDICATION PER DEED
REC. 12-12-95 AS DOC NO.
1995-0564552, O.R.

ALEMANIA ROAD VACATED PER DEED REC. 11-21-95 AS
DOC. NO. 1995-0530858 (SEE CITY DWG. NO. 18225-B)

LEGEND

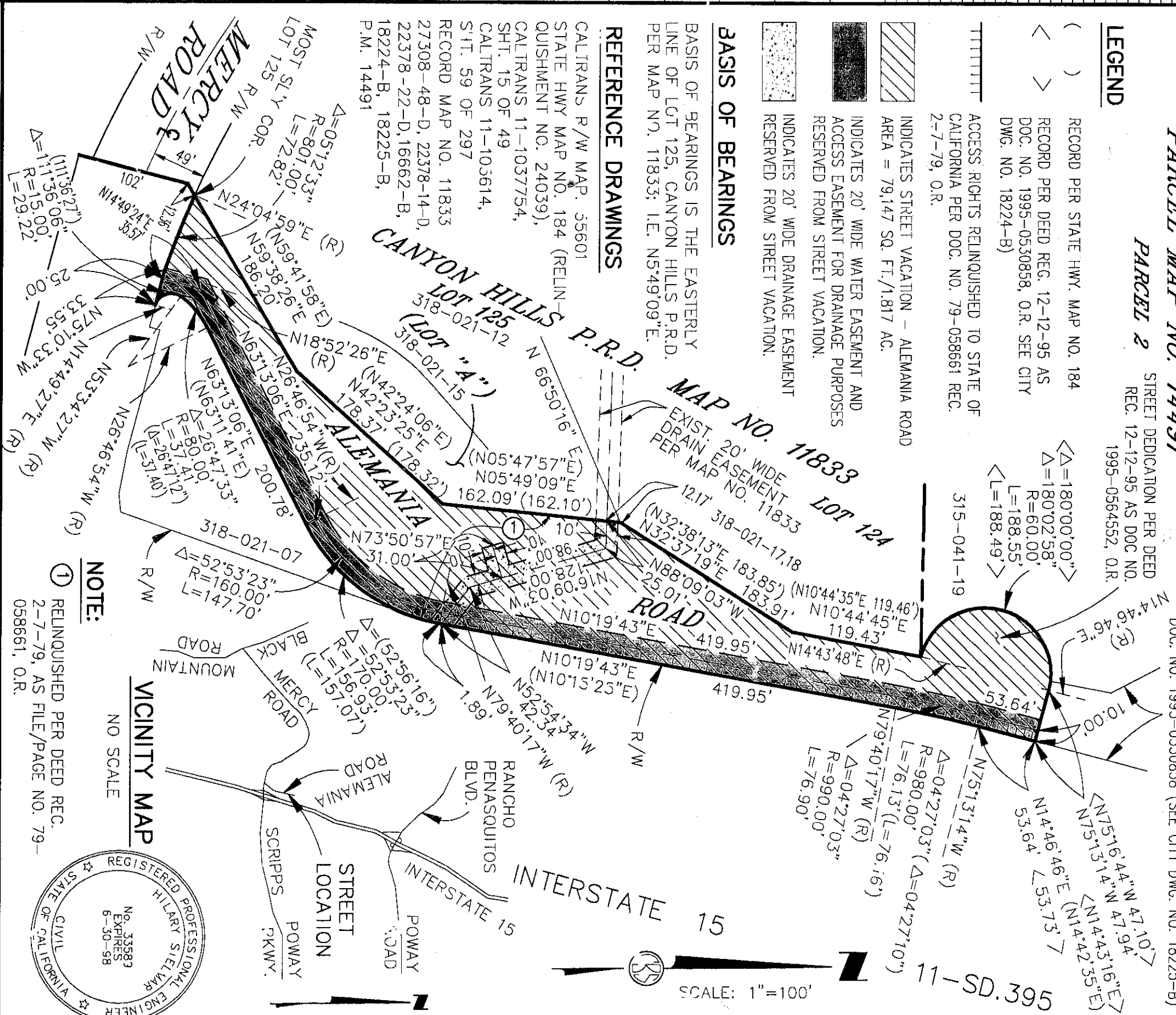
- () RECORD PER STATE HWY. MAP NO. 184
- < > RECORD PER DEED REC. 12-12-95 AS
DOC. NO. 1995-0530858, O.R. SEE CITY
DWG. NO. 18224-B)
- TTTTTTTT ACCESS RIGHTS RELINQUISHED TO STATE OF
CALIFORNIA PER DOC. NO. 79-058661 REC.
2-7-79, O.R.
- INDICATES STREET VACATION - ALEMANIA ROAD
AREA = 79,147 SQ. FT./1.817 AC.
- INDICATES 20' WIDE WATER EASEMENT AND
ACCESS EASEMENT FOR DRAINAGE PURPOSES
RESERVED FROM STREET VACATION.
- INDICATES 20' WIDE DRAINAGE EASEMENT
RESERVED FROM STREET VACATION.

BASIS OF BEARINGS

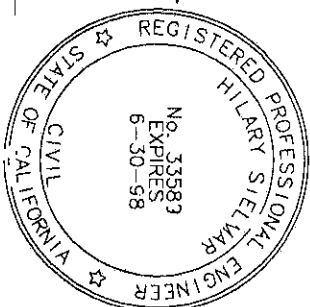
BASIS OF BEARINGS IS THE EASTERLY
LINE OF LOT 125, CANYON HILLS P.R.D.
PER MAP NO. 11833; I.E. N5°49'09"E.

REFERENCE DRAWINGS

- CALTRANS R/W MAP. 35601
- STATE HWY MAP NO. 184 (RELIN-
QUISHMENT NO. 24039),
- CALTRANS 11-1037754,
SHT. 15 OF 49
- CALTRANS 11-103614,
SHT. 59 OF 297
- RECORD MAP NO. 11833
- 27308-48-D, 22378-14-D,
22378-22-D, 16662-B,
18224-B, 18225-B,
P.M. 14491



NOTE:
① RELINQUISHED PER DEED REC.
2-7-79, AS FILE/PAGE NO. 79-
058661, O.R.



CRAIG, BULTHUIS & STELMAR

CIVIL ENGINEERS - LAND SURVEYORS - LAND PLANNERS
2611 ADAMS AVE., SAN DIEGO, CA. 92116 (619) 297-3974

[Signature]
HILARY STELMAR

DATE **4-5-96**
R.C.E. 33589

STREET VACATION (WITH WATER, DRAINAGE AND ACCESS EASEMENTS RESERVED)
ALEMANIA ROAD - NORTH OF MERCY ROAD

DESCRIPTION	BY	APPROVED	DATE	FILMED
ORIGINAL	CBS	REL	5/23	

CITY OF SAN DIEGO, CALIFORNIA
SHEET 1 OF 1 SHEET
[Signature]
FOR CITY ENGINEER
DATE **4-19-96**

W.C. 120102
SA95-501
1922-6295
NAD83 COORDINATES
232-1735
LAMBERT COORDINATES

Not Complete

STATUS

18351-B