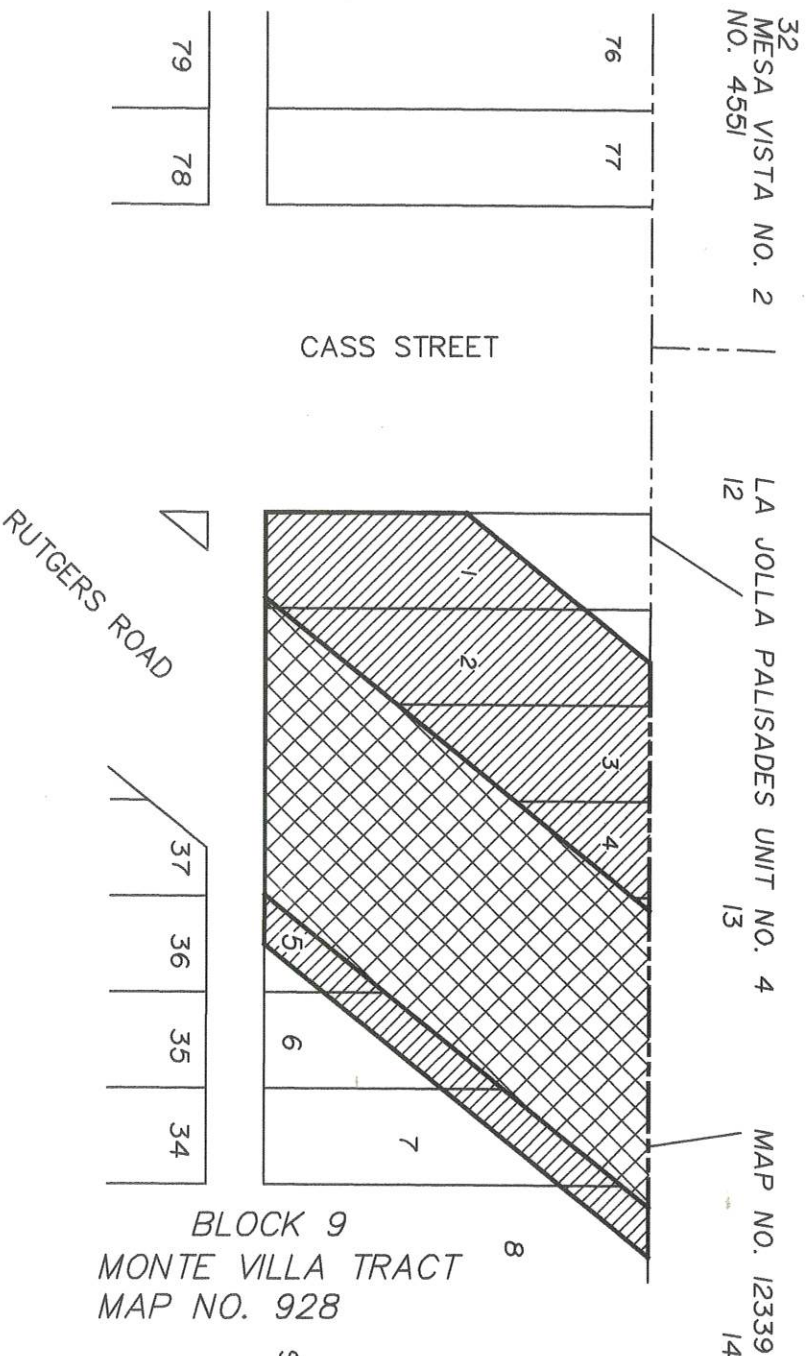


BLOCK 3  
FIRST ADDITION TO PACIFIC  
BEACH VISTA TRACT  
MAP NO. 930



**LEGEND**

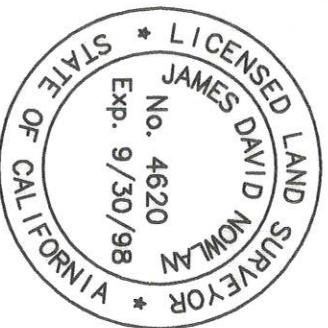
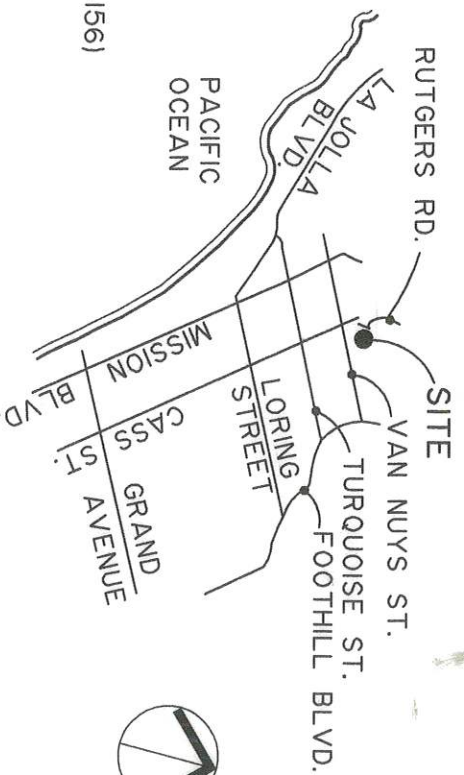
AREAS OF LAND SALE:

 PORTION OF RUTGERS ROAD "VACATED" (FEET)  
7731 SQUARE FEET

 PORTION OF ABANDONED  
SLOPE AND DRAINAGE EASEMENT  
6630 SQUARE FEET

FOR RUTGERS ROAD VACATION AND  
SLOPE AND DRAINAGE EASEMENT  
ABANDONMENT SEE CITY DWG. NO.  
18445-1-B  
REFERENCE: CITY DWG. NO. 6225-B (OPENING 16-156)

**VICINITY MAP**  
NOT TO SCALE



**Kimley-Horn  
and Associates, Inc.**  
Engineering, Planning and Environmental Consultants

517 Fourth Avenue, Suite 201, San Diego, Ca. 92101  
Tel: (619) 234-9411 Fax: (619) 234-9433

*James D. Nowlan*  
JAMES D. NOWLAN L.S. 4620

RESOLUTION No. R-290599  
ADOPTED ON AUGUST 4, 1998  
P.O.C. No. 1998-0556537 O.R.  
RECORDED: SEPT. 1, 1998

**LAND SALE**

PORTION OF BLOCK 9 OF FIRST ADDITION TO PACIFIC BEACH VISTA TRACT, MAP NO. 930,  
PORTION OF MONTE VILLA TRACT, MAP NO. 928 AND A PORTION OF  
RUTGERS ROAD VACATED - EASTERLY OF CASS STREET

DESCRIPTION	BY	APPROVED	DATE	FILED
ORIGINAL				

COMPLETE

STATUS

CITY OF SAN DIEGO, CALIFORNIA  
SHEET 1 OF 1 SHEET

SA 96-507  
W.O. NO. 120102

*Jack Hanna*  
FOR CITY ENGINEER

DATE  
8-6-98

1876-6351  
NAD83C COORDINATE

DIVISION HEAD

236-1791  
LAMBERT COORDINATE

SECTION HEAD

18445-2-B