

**EXHIBIT "B"**

**REFERENCE DRAWING**

MAP 1108, C.R. 23046, 5321-D, 25797-2-D,  
27012-5-D, 27012-6-D, 40253-D

**ASSESSOR'S PARCEL NO.**

447-201-15 & 17

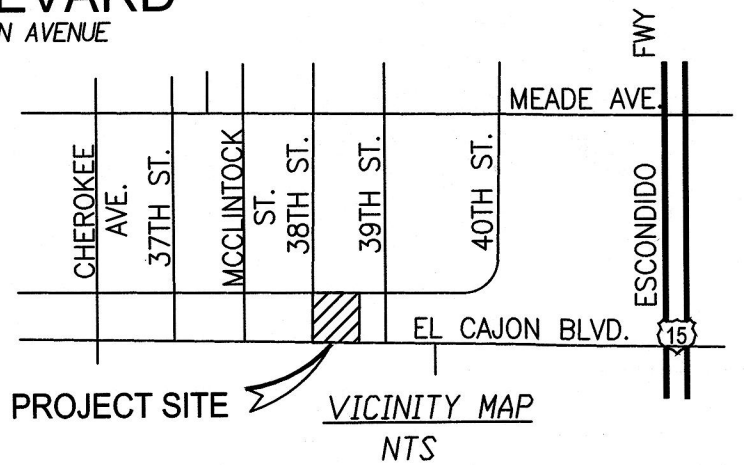
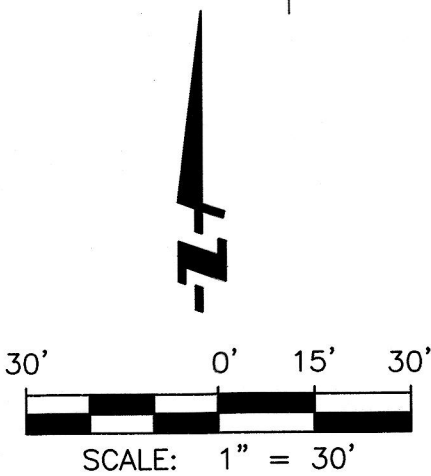
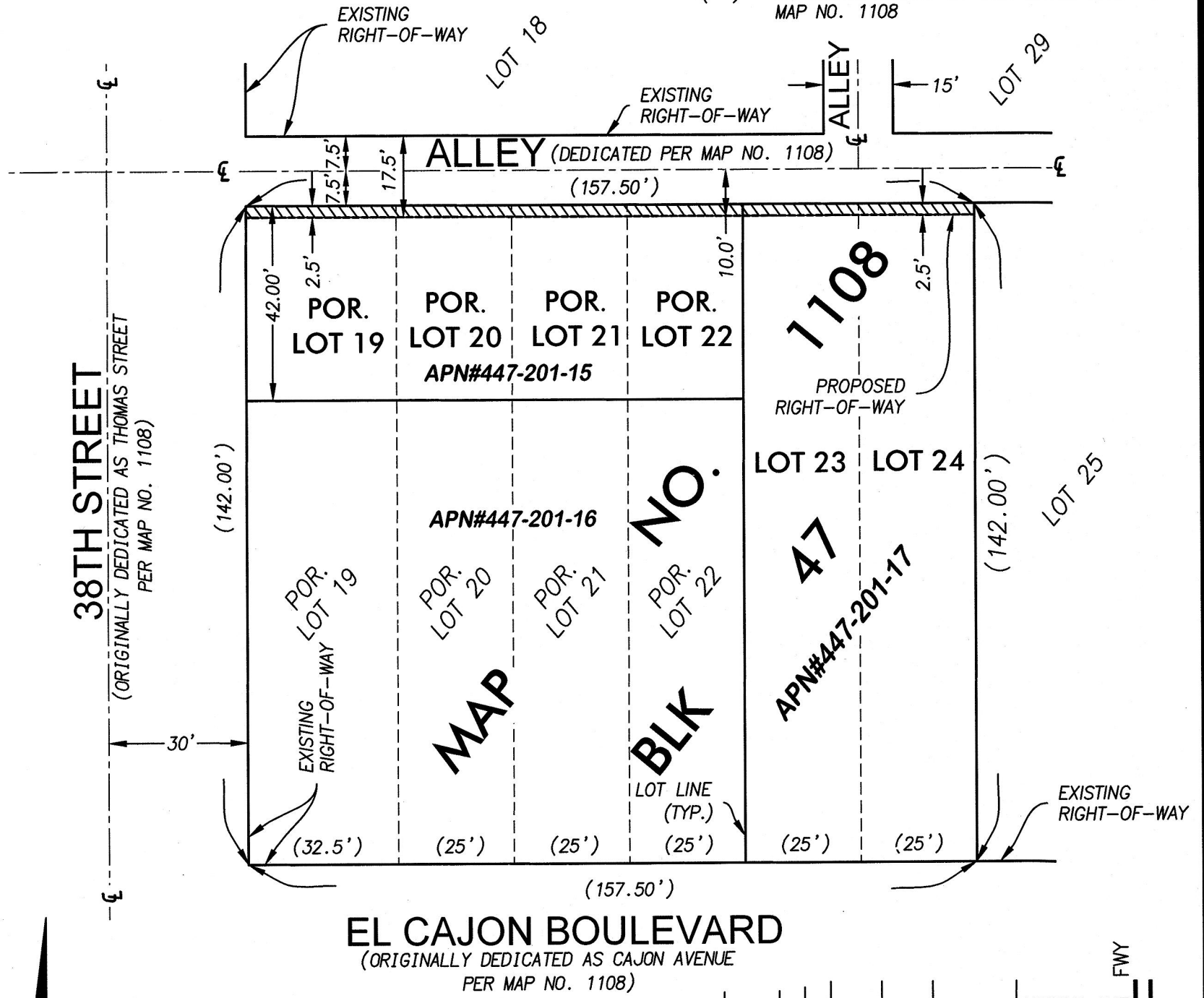
**LEGEND**



INDICATES 2.5' WIDE ALLEY DEDICATION,  
ACQUIRED.  
CONTAINING 393.9 SQUARE FEET  
(0.009 ACRE, MORE OR LESS)

( )

INDICATES RECORD OR CALCULATED DATA PER  
MAP NO. 1108



**FUSCOE**  
ENGINEERING  
6390 Greenwich Drive, Suite 170, San Diego, California 92122  
tel 858.554.1500 fax 858.597.0335 www.fuscoe.com

*Justin Pallamary* 1-19-18  
JUSTIN S. PALLAMARY, PLS 8392 Date



DOCUMENT NO.: 2019-0068535  
RECORDED: 2/26/2019

**ALLEY DEDICATION  
PORTIONS OF LOTS 19, 20, 21, 22, 23 & 24 IN BLOCK 47, OF MAP NO. 1108**

DESCRIPTION	BY	APPROVED	DATE	FILMED	CITY OF SAN DIEGO, CALIFORNIA	P.T.S. NO. 576738
ORIGINAL	FEI			2-26-19	<i>Frank R. ...</i> CITY	1854-6295
					FOR LAND SURVEYOR	NAD 83 COORDINATES
					DATE	214-1735
					DIVISION HEAD	LAMBERT COORDINATES
					SECTION HEAD	<b>40354 - B</b>
ACQUIRED					STATUS	