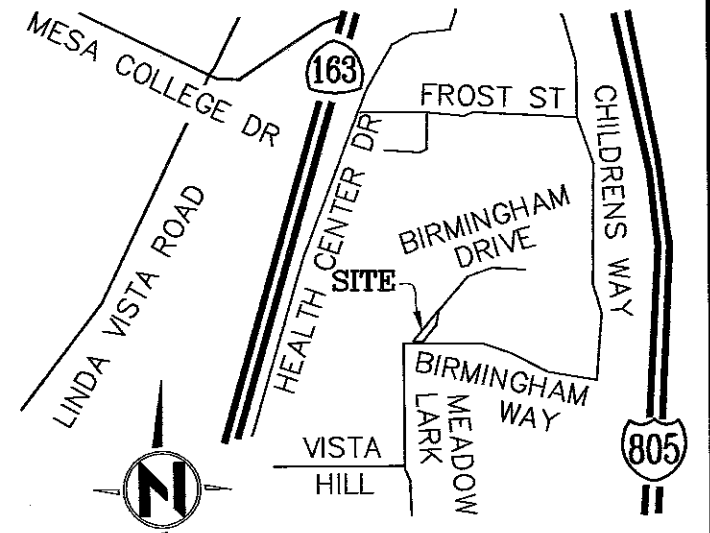


LEGEND

- SEWER EASEMENT ACQUIRED
AREA = 2,599 SQUARE FEET (0.060 ACRES) [Dotted Pattern]
- PROPERTY LINE/ R-O-W LINE [Solid Line]
- CENTER LINE [Dashed Line]
- LOT LINE [Dotted Line]
- POINT OF COMMENCEMENT POC
- POINT OF BEGINNING POB
- RECORD DATA PER MAP NO. 12901 ()

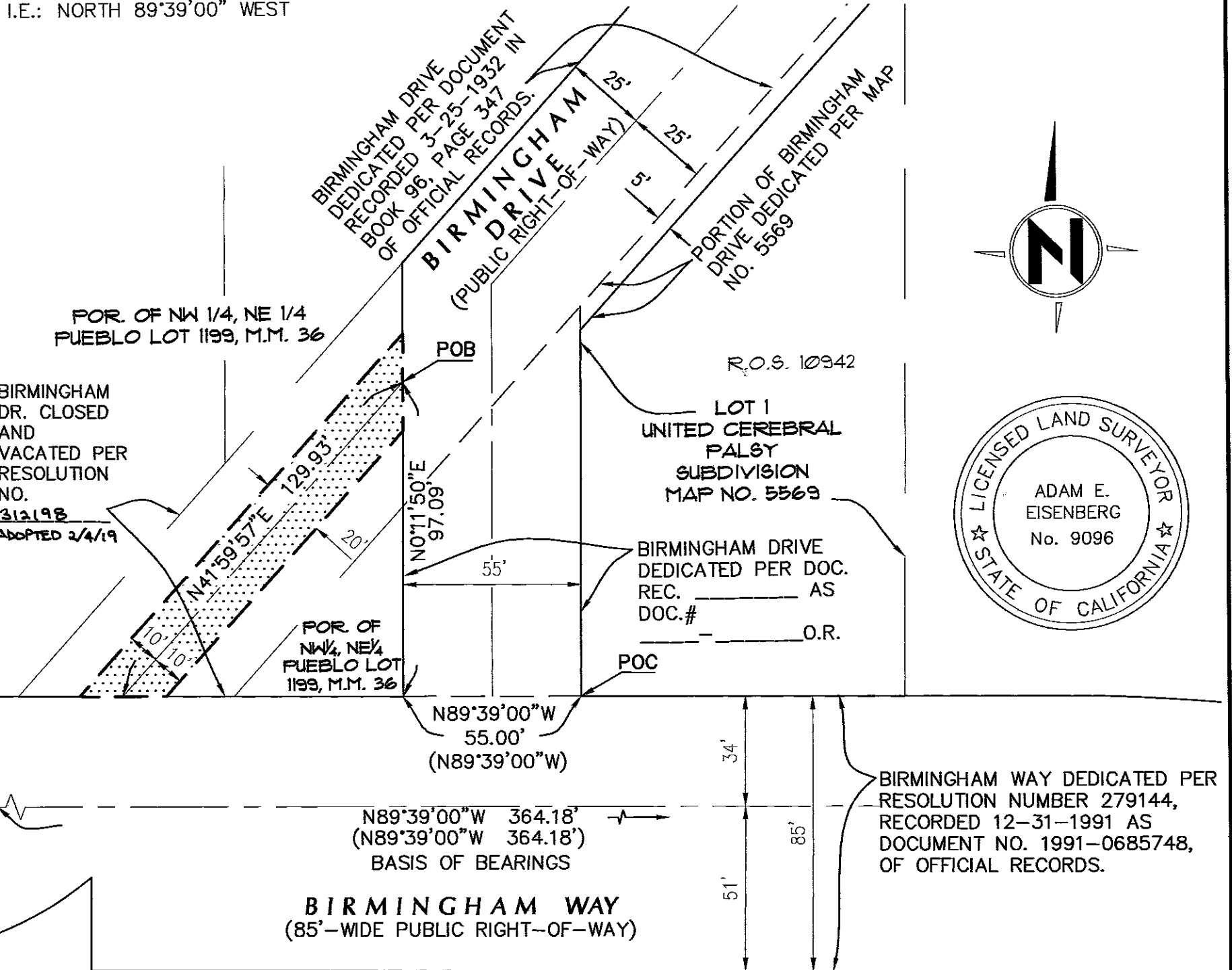
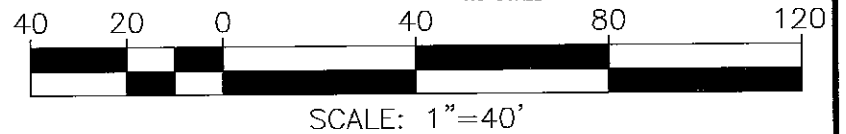
REFERENCES

MAP NO. 12901
39799-D



BASIS OF BEARINGS

THE BASIS OF BEARINGS FOR THIS SURVEY IS A PORTION OF THE CENTERLINE OF BIRMINGHAM WAY PER MAP No. 12901. I.E.: NORTH 89°39'00" WEST



BVE
9449 Balboa Avenue, Suite 270
San Diego, CA 92123 (619) 299-5550
[Signature] 9-13-2018
ADAM E. EISENBERG LS 9096 DATE

DOCUMENT NO. 2019-0181810
RECORDED MAY 14, 2019

**SEWER EASEMENT DEDICATION
IN A PORTION OF PUEBLO LOT 1199, M.M. 36**

DESCRIPTION	BY	APPROVED	DATE	FILMED	CITY OF SAN DIEGO, CALIFORNIA SHEET 1 OF 1 SHEETS	P.T.S. NO. 579511
ORIGINAL	BVE	FRL	5/14/19			I.O.NO. N/A
					<i>[Signature]</i> 5/14/19 FOR CITY LAND SURVEYOR DATE	1870-6281 NAD-83 COORDINATES
						230-1721 LAMBERT COORDINATES
COMPLETE				STATUS		DWG NO. 40416-1-B