

NON-PLOTTABLE EASEMENTS

THE FOLLOWING EASEMENTS HAVE NO SPECIFIC LOCATION SET FORTH IN THE DOCUMENTS AND ARE NOT PLOTTED HEREON:

EASEMENTS FOR ACCESS AND MAINTENANCE OF ELECTRICAL FACILITIES TO SAN DIEGO GAS & ELECTRIC FACILITIES RECORDED 1/10/1964 AS FILE NO. 5604 AND 5/4/1976 AS FILE NO. 76-133915, BOTH O.R.

LEGEND

15' WIDE ACCESS EASEMENT FOR DRAINAGE MAINTENANCE ACQUIRED
AREA = 10,539 SQ. FT. (OR 0.24 AC.)

P.O.C. INDICATES POINT OF COMMENCEMENT

T.P.O.B. INDICATES TRUE POINT OF BEGINNING

P.O.T. INDICATES POINT OF TERMINUS

() INDICATES RECORD DATA PER MAP 4853

———— INDICATES RIGHT OF WAY LINE

———— INDICATES LOT LINE

----- INDICATES CENTERLINE

----- INDICATES EASEMENT LINE

BASIS OF BEARINGS

THE BASIS OF BEARINGS FOR THIS EASEMENT IS THE WESTERLY LINE OF LOT 1 OF MAP 4853.

i.e. N13°51'50"W

REFERENCES

APN 541-611-16
MAP NO. 4853
CITY OF SAN DIEGO DRAWINGS: 13711-D, 13687-D
FILE/PAGE 122663 REC. 7/8/1969
RESOLUTION NO. R-295562 ADOPTED 10/9/2001

EASEMENTS

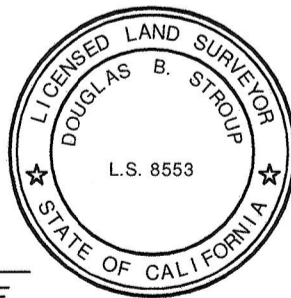
- ① EASEMENT FOR SEWER, WATER, DRAINAGE AND PUBLIC UTILITIES TO THE CITY OF SAN DIEGO PER MAP NO. 3654.
- ② EASEMENT FOR ROAD, UTILITY LINES, AND DRAINAGE TO ATLANTIC LIFE INSURANCE COMPANY RECORDED 3/27/1958 IN BOOK 7011, PAGE 185, O.R.
- ③ EASEMENT FOR POWERLINES AND APPURTENANCES TO SAN DIEGO GAS & ELECTRIC COMPANY RECORDED 1/10/1964 AS FILE NO. 5601, O.R.
- ④ EASEMENT FOR STORM DRAIN OR DRAINS TO THE CITY OF SAN DIEGO RECORDED 8/4/1969 AS FILE NO. 141350, O.R.
- ⑤ EASEMENT FOR TRANSMISSION AND DISTRIBUTION OF ELECTRICITY FOR ALL PURPOSES TO SAN DIEGO GAS & ELECTRIC COMPANY RECORDED 3/5/1973 AS FILE NO. 73-057205, O.R.
- ⑥ EASEMENT FOR RIGHT OF WAY TO SAN DIEGO GAS & ELECTRIC COMPANY RECORDED 4/1/1975 AS FILE NO. 75-079998, O.R.

ABUTTER'S RIGHTS OF INGRESS AND EGRESS RELINQUISHED PER MAP NO. 3654.

ABUTTER'S RIGHTS OF INGRESS AND EGRESS RELINQUISHED PER MAP NO. 4853.

ABUTTER'S RIGHTS OF INGRESS AND EGRESS RELINQUISHED PER DOC. NO. 74-098400, O.R.

HUNSAKER & ASSOCIATES
SAN DIEGO, INC.
9707 Waples Street (858)558-4500
San Diego, CA 92121

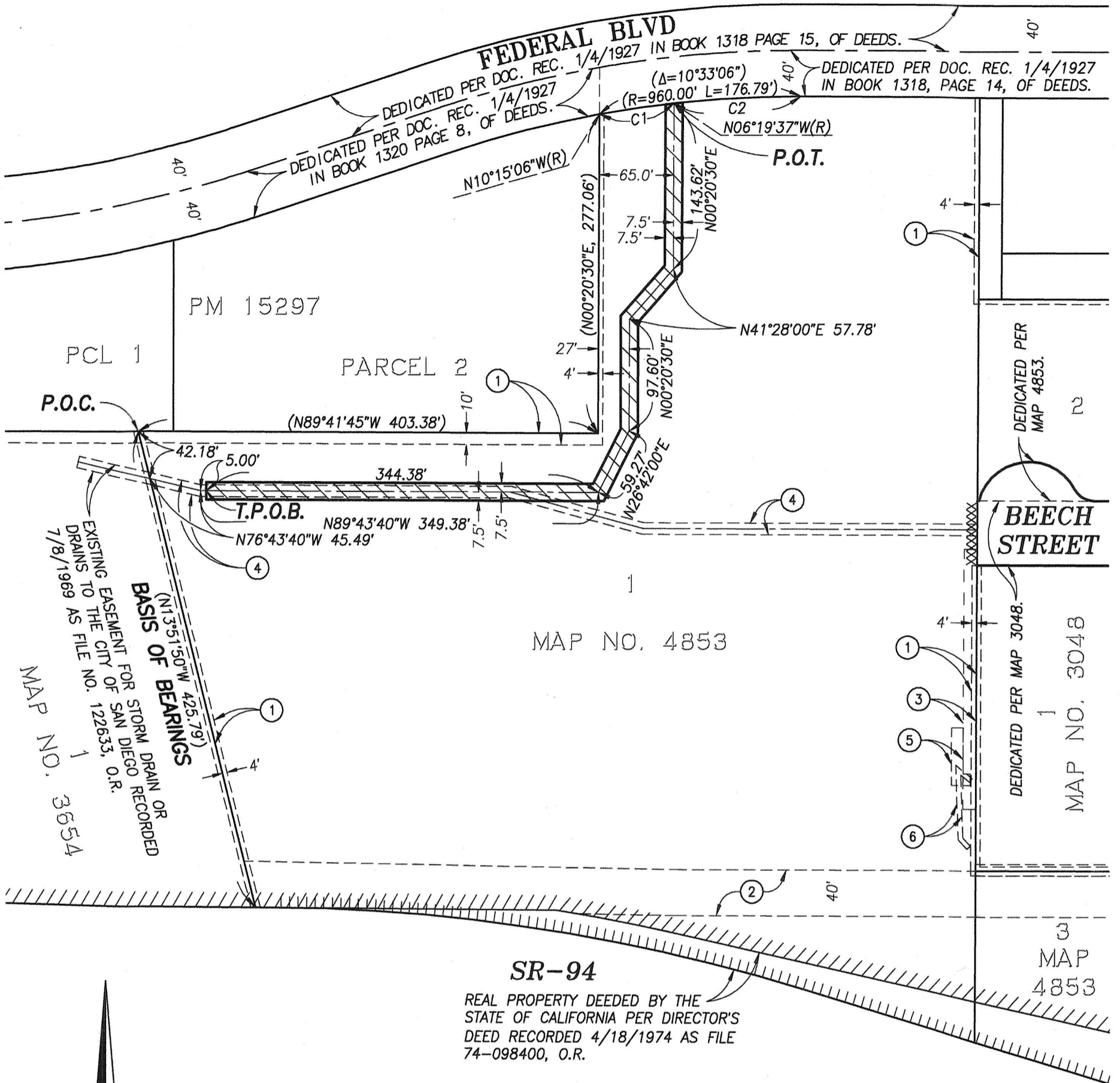


DOUGLAS B. STROUP, P.L.S. 8553 10/09/18 DATE

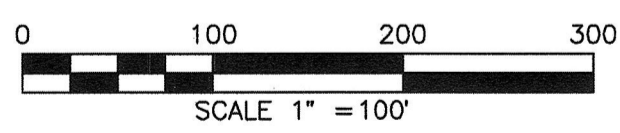
DOCUMENT No. 2018-0505920
RECORDED Dec 10, 2018

**ACCESS EASEMENT FOR DRAINAGE MAINTENANCE
IN LOT 1, MAP 4853**

DESCRIPTION	BY	APPROVED	DATE	FILMED	CITY OF SAN DIEGO, CALIFORNIA SHEET 1 OF 2 SHEETS	PTS 591139
ORIGINAL	H&A	S.O.	10/10/18			I.O. N/A
ACQUIRED STATUS					FOR CITY LAND SURVEYOR	1842-6299
						DATE
ACQUIRED STATUS						CCS 83 COORDINATES
ACQUIRED STATUS						202-1739
ACQUIRED STATUS						40504-1-B



CURVE TABLE			
#	DELTA	RADIUS	LENGTH
C1	3°55'29"	960.00'	65.76'
C2	6°37'37"	960.00'	111.04'



**ACCESS EASEMENT FOR DRAINAGE MAINTENANCE
 IN LOT 1, MAP 4853**

DESCRIPTION	BY	APPROVED	DATE	FILMED	CITY OF SAN DIEGO, CALIFORNIA SHEET 2 OF 2 SHEETS	PTS	591139
ORIGINAL	H&A	S.O.	3/8/19			I.O.	N/A
					<i>Frank R. #13</i> FOR CITY LAND SURVEYOR	11/28/18	DATE
						1842-6299	CCS 83 COORDINATES
						202-1739	NAD 27 COORDINATES
ACQUIRED							STATUS
							40504-2-B