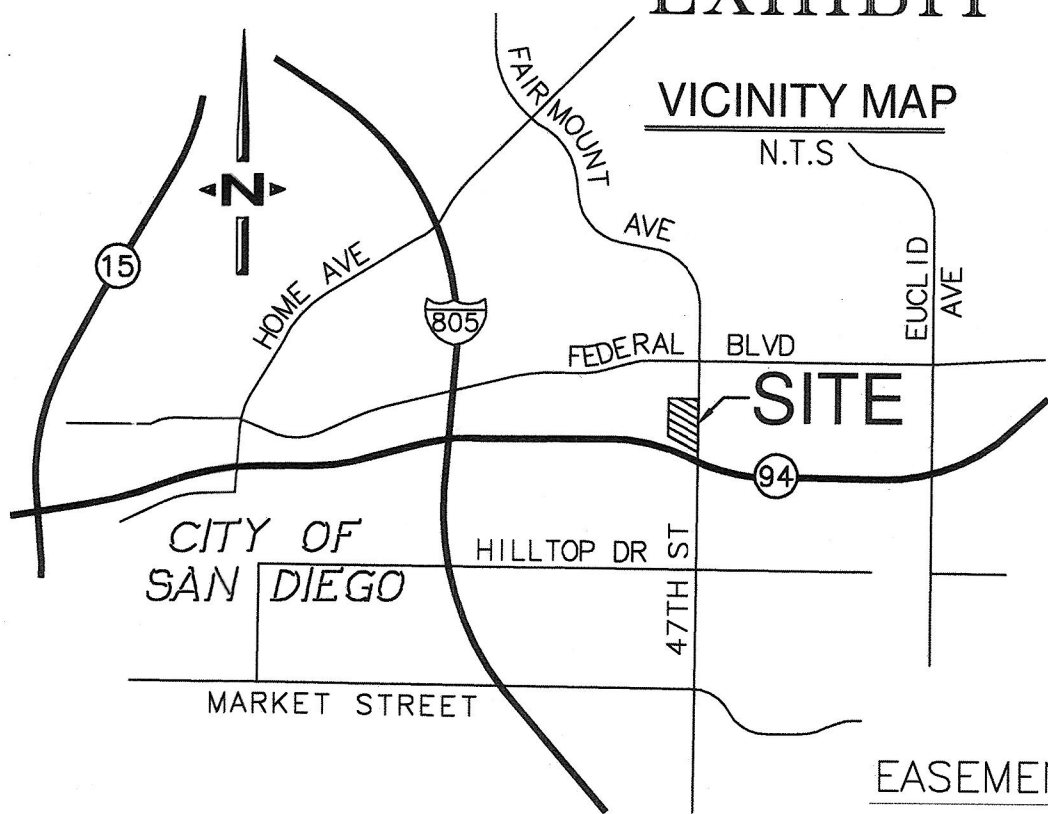



# EXHIBIT "B"

## VICINITY MAP



## LEGEND

-  2' WIDE ROW EASEMENT ACQUIRED  
AREA = 1,117 SQ. FT. (OR 0.026 AC.)
- P.O.C.** INDICATES POINT OF COMMENCEMENT
- T.P.O.B.** INDICATES TRUE POINT OF BEGINNING
- P.O.T.** INDICATES POINT OF TERMINUS
- ( ) INDICATES RECORD DATA PER MAP 4853

## EASEMENTS

- ① EASEMENT FOR PUBLIC UTILITIES TO SAN DIEGO GAS & ELECTRIC COMPANY RECORDED 2/9/1940 IN BOOK 991, PAGE 354, O.R.
- ② EASEMENT FOR ROAD PURPOSES TO THE CITY OF SAN DIEGO RECORDED 1/3/1951 IN BOOK 3918, PAGE 299, O.R.
- ③ EASEMENTS FOR PUBLIC UTILITIES AND INCIDENTAL PURPOSES TO THE CITY OF SAN DIEGO PER MAP NO. 3048.
- ④ EASEMENT FOR POLES AND WIRES TO SAN DIEGO GAS & ELECTRIC COMPANY RECORDED 7/22/1954 IN BOOK 5309, PAGE 78, O.R.
- ⑤ EASEMENT FOR PUBLIC UTILITIES AND INGRESS AND EGRESS TO SAN DIEGO GAS & ELECTRIC COMPANY RECORDED 9/22/1954 AS BOOK 5376, PAGE 205, O.R.
- ⑥ EASEMENT FOR SEWER, WATER, DRAINAGE AND PUBLIC UTILITIES TO THE CITY OF SAN DIEGO PER MAP NO. 3654.
- ⑦ EASEMENT FOR ROAD, UTILITY LINES, AND DRAINAGE TO ATLANTIC LIFE INSURANCE COMPANY RECORDED 3/27/1958 IN BOOK 7011, PAGE 185, O.R.
- ⑧ EASEMENT TO SAN DIEGO GAS & ELECTRIC COMPANY RECORDED 4/18/1974 AS DOC. NO. 74-098400, O.R.
- ⑨ EASEMENT FOR ROAD AND UTILITIES TO PORT PROPERTIES, INC., RECORDED 11/22/1974 AS DOC. NO. 74-307835, O.R.

////// ABUTTER'S RIGHTS OF INGRESS AND EGRESS RELINQUISHED PER MAP NO. 3654.

||||||| ABUTTER'S RIGHTS OF INGRESS AND EGRESS RELINQUISHED PER DOC. NO. 74-098400, O.R.

## BASIS OF BEARINGS

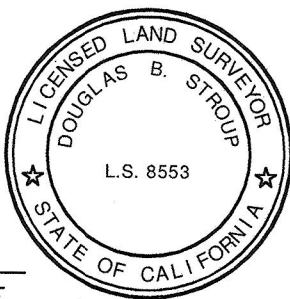
THE BASIS OF BEARINGS FOR THIS EASEMENT IS THE EASTERLY LINE OF LOT 3 OF MAP 4853.

i.e. N00°24'00"E

## REFERENCES

APNS 541-611-08 AND 541-611-09  
 MAP NO.S 3048, 3654, AND 4853  
 RESOLUTION NO. R-295562 ADOPTED 10/9/2001  
 DWG. NO. 31460-D

**H & A**  
**HUNSAKER & ASSOCIATES**  
 SAN DIEGO, INC.  
 9707 Waples Street (858)558-4500  
 San Diego, CA 92121



*[Signature]* 10/09/18  
 DOUGLAS B. STROUP, P.L.S. 8553 DATE

DOCUMENT No. 2019-0093051  
 RECORDED MAR 15, 2019

## PUBLIC STREET EASEMENT

IN LOT 1, MAP 3048; LOT 3, MAP 4853; AND PORTION OF LOT 18, MAP 283

DESCRIPTION	BY	APPROVED	DATE	FILMED	CITY OF SAN DIEGO, CALIFORNIA	
ORIGINAL	H&A	SO.	3/18/19		SHEET 1 OF 2 SHEETS	
					PTS 591139 I.O. N/A	
					1842-6299 CCS 83 COORDINATES	
					202-1739 NAD 27 COORDINATES	
<b>ACQUIRED</b>					STATUS	
					40505-1-B	

# EXHIBIT "B"

ROS 811

MAP 4853

BEECH STREET DEDICATED PER MAP 4853 AND VACATED AS PARCEL "A" PER CITY OF SAN DIEGO RESOLUTION NUMBER R-295562 RECORDED \_\_\_\_\_ AS DOC. NO. \_\_\_\_\_, O.R.

BEECH STREET DEDICATED PER FILE NO. 187943 REC. 11/1/1962, O.R., AND VACATED AS PARCEL "C" PER CITY OF SAN DIEGO RESOLUTION NUMBER R-295562 RECORDED \_\_\_\_\_ AS DOC. NO. \_\_\_\_\_, O.R.

DEDICATED PER FILE NO. 187943 REC. 11/1/1962, O.R.

P.O.T.

BEECH STREET DEDICATED PER MAP 3048 AND VACATED AS PARCEL "B" PER CITY OF SAN DIEGO RESOLUTION NUMBER R-295562 RECORDED \_\_\_\_\_ AS DOC. NO. \_\_\_\_\_, O.R.

BEECH STREET

MAP NO. 3048

47TH STREET

P.O.C. NE COR LOT 3

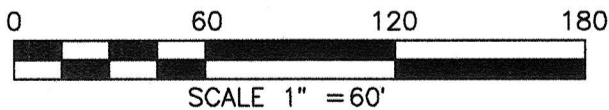
MAP 4853

DEDICATED PER MAP 3654

REAL PROPERTY DEEDED BY THE STATE OF CALIFORNIA PER DIRECTOR'S DEED RECORDED 4/18/1974 AS FILE 74-098400, O.R.

HIGHWAY 94

T.P.O.B.



**H & A** HUNSAKER & ASSOCIATES SAN DIEGO, INC.  
9707 Waples Street (858)558-4500 San Diego, CA 92121

## PUBLIC STREET EASEMENT

IN LOT 1, MAP 3048; LOT 3, MAP 4853; AND PORTION OF LOT 18, MAP 283

DESCRIPTION	BY	APPROVED	DATE	FILMED	CITY OF SAN DIEGO, CALIFORNIA	PTS 591139
ORIGINAL	H&A	SO.	3/10/19		SHEET 2 OF 2 SHEETS	I.O. N/A
					<i>Frank R. P. D.</i> 11/28/18	1842-6299
					FOR CITY LAND SURVEYOR DATE	CCS 83 COORDINATES
						202-1739
						NAD 27 COORDINATES
<b>ACQUIRED</b> STATUS						40505-2-B