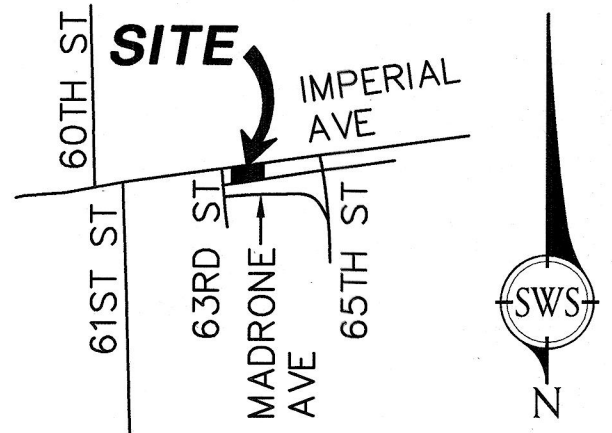
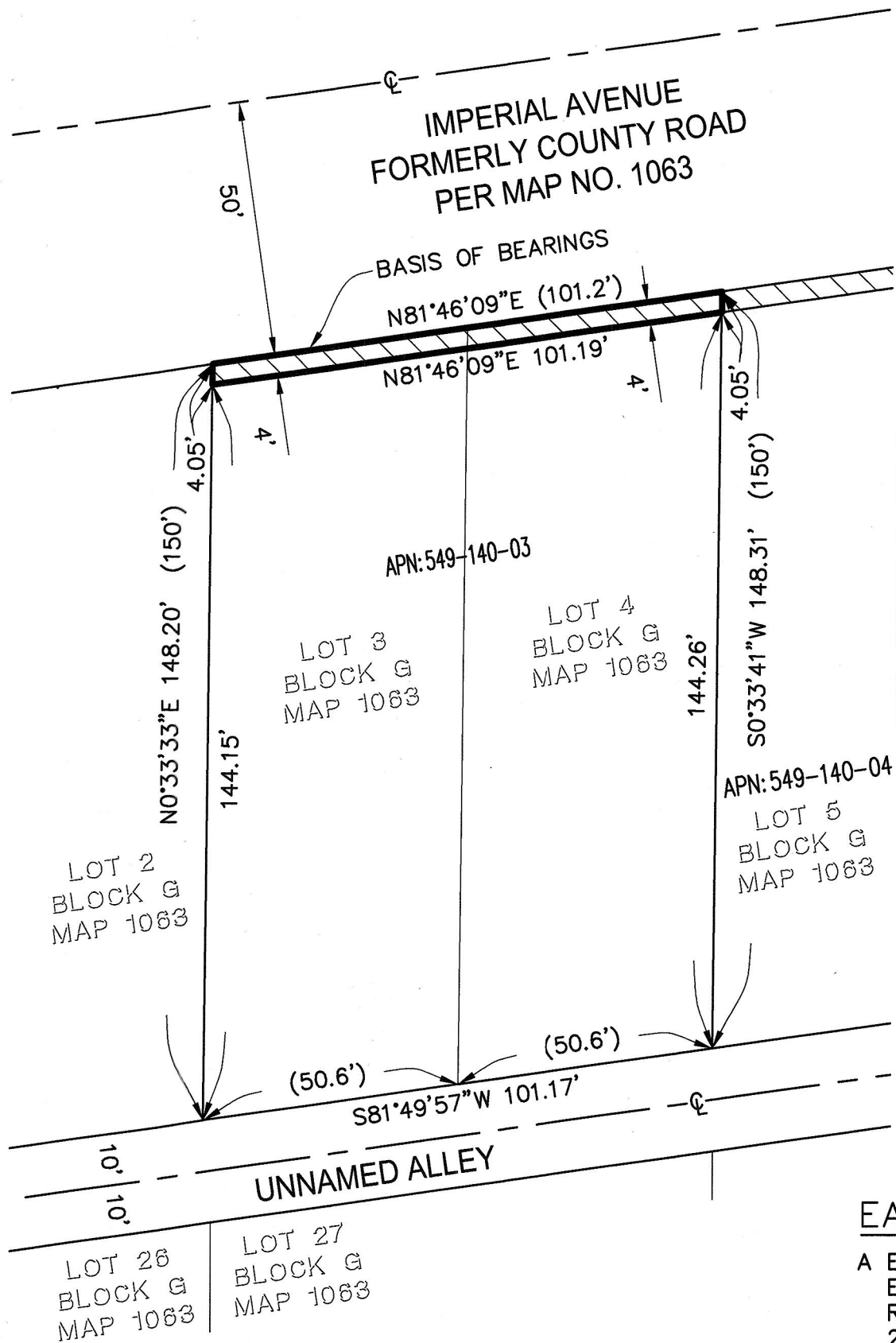
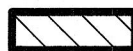


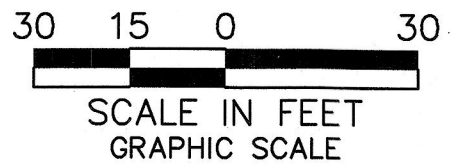
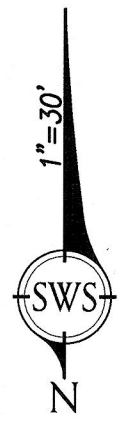
EXHIBIT 'B'



VICINITY MAP  
NOT TO SCALE

LEGEND

-  PUBLIC STREET EASEMENT, ACQUIRED  
405± SQUARE FEET (0.009 AC)
- APN ASSESSOR'S PARCEL NUMBER
- ( ) INDICATES RECORD OR CALCULATED DATA PER MAP NO. 1063



SEE SHEET 2 OF 5

EASEMENT NOTES

A EASEMENT IN FAVOR OF SAN DIEGO GAS & ELECTRIC COMPANY PER DOCUMENT RECORDED MAY 18, 2018 IN RECORDING 2018-0200846 OF OFFICIAL RECORDS. SAID EASEMENT IS BLANKET IN NATURE AND CANNOT BE PLOTTED FROM THE RECORD

REFERENCES

MAP NO. 1063  
RECORD OF SURVEY NO. 14405 & 15235  
CITY OF SAN DIEGO DRAWING 40300-D

BASIS OF BEARINGS

BASIS OF BEARINGS FOR THIS PLAT IS THE SOUTHERLY RIGHT-OF-WAY LINE OF IMPERIAL AVENUE ACCORDING TO RECORD OF SURVEY NO. 15235, I.E. NORTH 81°46'09" EAST

SWS ENGINEERING, INC.  
261 AUTUMN DRIVE, SUITE 115  
SAN MARCOS, CA 92069  
(760) 744-0011

*Deyan Pantich* 5/9/19

DEYAN PANTICH P.L.S. 8144 EXP. 12-31-20



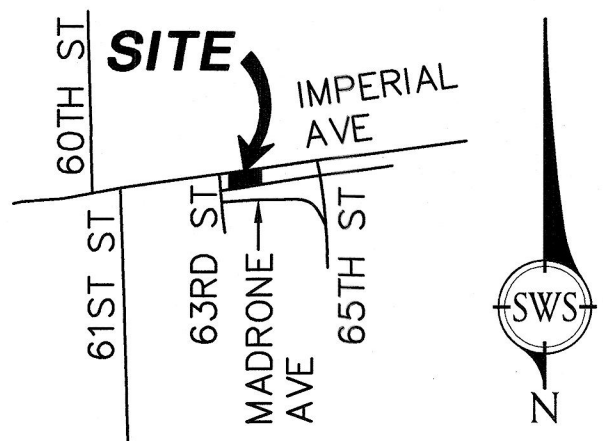
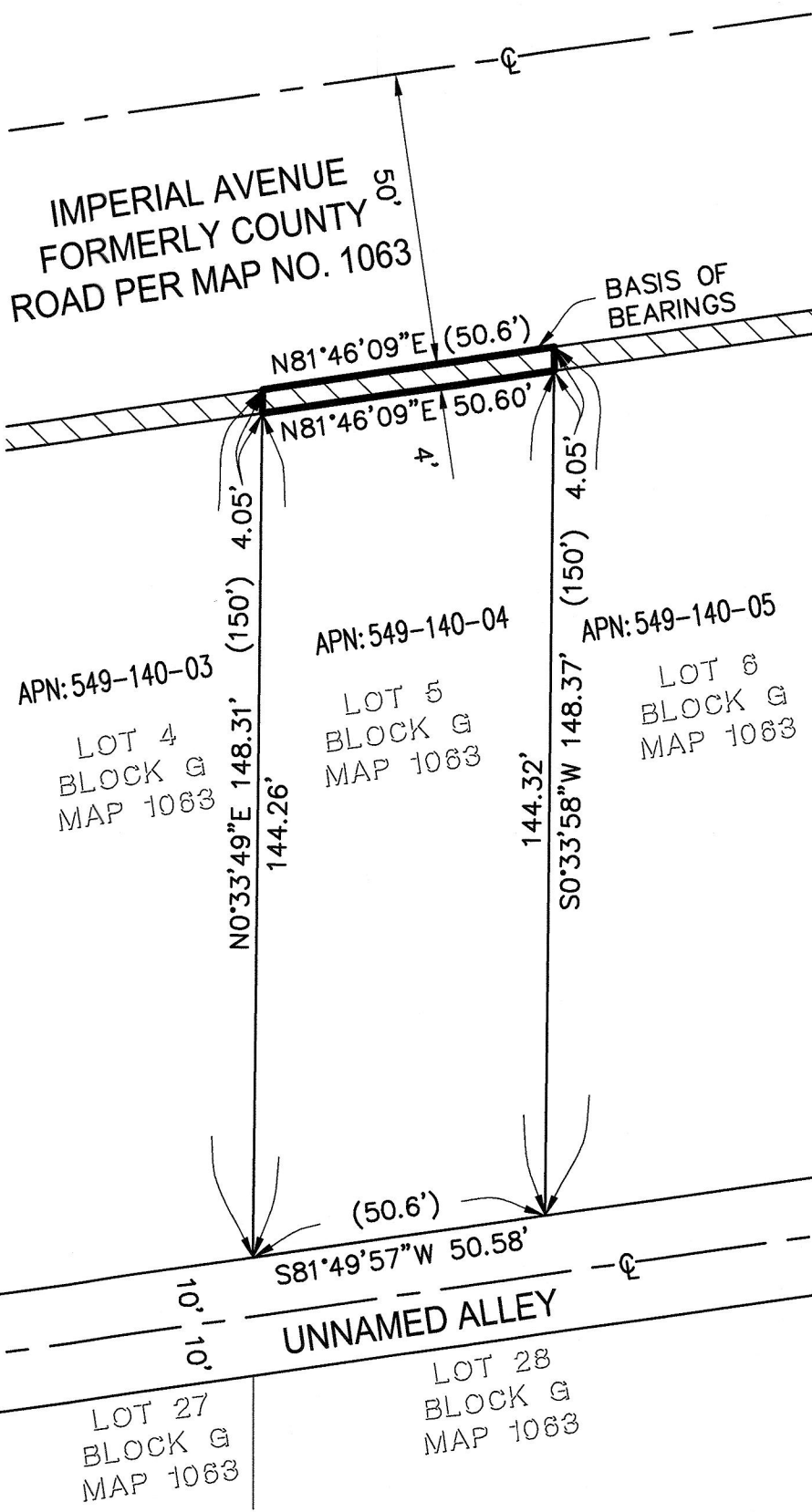
DOCUMENT No. DOC. NO. 2019-0199441  
RECORDED 5/24/2019

PUBLIC STREET EASEMENT DEDICATION

IN LOTS 3 THROUGH 7, 9 AND 10 IN BLOCK 'G' OF ENCANTO HEIGHTS, MAP NO. 1063

DESCRIPTION	BY	APPROVED	DATE	FILMED	CITY OF SAN DIEGO, CALIFORNIA	
ORIGINAL	SWS			5.24.19	SHEET 1 OF 5 SHEET	
					PTS 591659	
					1838-6309	
					CCS 83 COORDINATES	
					198-1749	
					NAD 27 COORDINATES	
ACQUIRED					40509-1-B	
					STATUS	

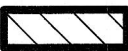
EXHIBIT 'B'

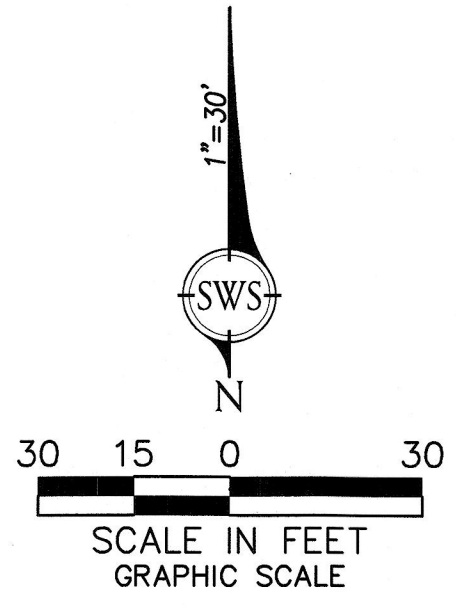


SEE SHEET 1 OF 5

SEE SHEET 3 OF 5

LEGEND

-  PUBLIC STREET EASEMENT, ACQUIRED 202± SQUARE FEET (0.005 AC)
- APN ASSESSOR'S PARCEL NUMBER
- ( ) INDICATES RECORD OR CALCULATED DATA PER MAP NO. 1063



EASEMENT NOTES

A EASEMENT IN FAVOR OF SAN DIEGO GAS & ELECTRIC COMPANY PER DOCUMENT RECORDED MAY 18, 2018 IN RECORDING 2018-0200846 OF OFFICIAL RECORDS. SAID EASEMENT IS BLANKET IN NATURE AND CANNOT BE PLOTTED FROM THE RECORD

BASIS OF BEARINGS

BASIS OF BEARINGS FOR THIS PLAT IS THE SOUTHERLY RIGHT-OF-WAY LINE OF IMPERIAL AVENUE ACCORDING TO RECORD OF SURVEY NO. 15235, I.E. NORTH 81°46'09" EAST

REFERENCES

MAP NO. 1063  
RECORD OF SURVEY NO. 14405 & 15235  
CITY OF SAN DIEGO DRAWING 40300-D

SWS ENGINEERING, INC.  
261 AUTUMN DRIVE, SUITE 115  
SAN MARCOS, CA 92069  
(760) 744-0011



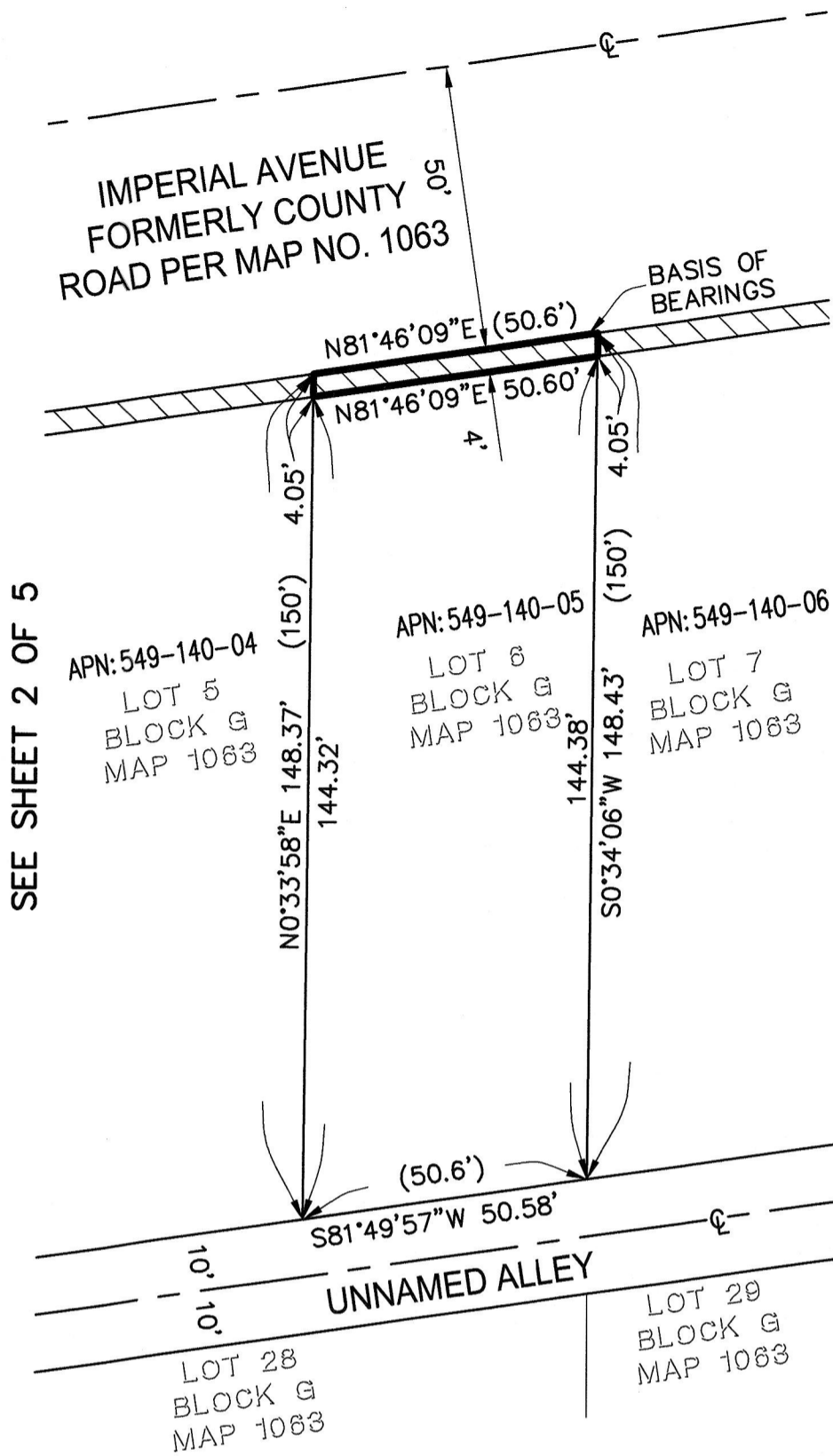
DOCUMENT No. 2019-0199441  
RECORDED 5/24/2019

*Deyan Pantich* 5/9/19  
DEYAN PANTICH P.L.S. 8144 EXP. 12-31-20

PUBLIC STREET EASEMENT DEDICATION  
IN LOTS 3 THROUGH 7, 9 AND 10 IN BLOCK 'G' OF ENCANTO HEIGHTS, MAP NO. 1063

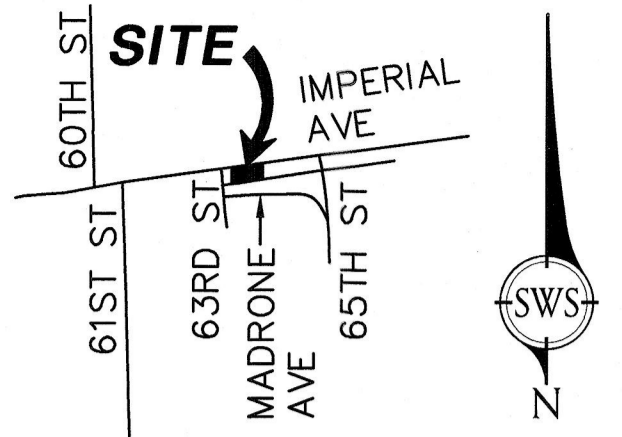
DESCRIPTION	BY	APPROVED	DATE	FILMED	CITY OF SAN DIEGO, CALIFORNIA	PTS 591659
ORIGINAL	SWS			5/24/19	SHEET 2 OF 5 SHEET	
					<i>Frank R. Paj</i> FOR CITY LAND SURVEYOR	1838-6309 CCS 83 COORDINATES
					5/23/19 DATE	198-1749 NAD 27 COORDINATES
ACQUIRED						40509-2-B
					STATUS	

EXHIBIT 'B'



SEE SHEET 2 OF 5


SEE SHEET 4 OF 5

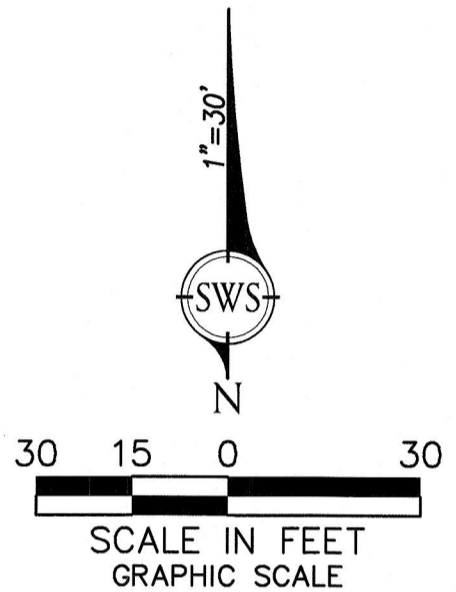


VICINITY MAP

NOT TO SCALE

LEGEND

-  PUBLIC STREET EASEMENT, ACQUIRED 202± SQUARE FEET (0.005 AC)
- APN ASSESSOR'S PARCEL NUMBER
- ( ) INDICATES RECORD OR CALCULATED DATA PER MAP NO. 1063



EASEMENT NOTES

- A EASEMENT IN FAVOR OF SAN DIEGO GAS & ELECTRIC COMPANY PER DOCUMENT RECORDED MAY 18, 2018 IN RECORDING 2018-0200846 OF OFFICIAL RECORDS. SAID EASEMENT IS BLANKET IN NATURE AND CANNOT BE PLOTTED FROM THE RECORD
- B EASEMENT IN FAVOR OF THE CITY OF SAN DIEGO FOR SEWER PIPELINE PURPOSES, PER DOCUMENT RECORDED AUGUST 24, 1945 IN BOOK 1923, PAGE 288 O.R. SAID EASEMENT IS BLANKET IN NATURE AND CANNOT BE PLOTTED FROM THE RECORD.

BASIS OF BEARINGS

BASIS OF BEARINGS FOR THIS PLAT IS THE SOUTHERLY RIGHT-OF-WAY LINE OF IMPERIAL AVENUE ACCORDING TO RECORD OF SURVEY NO. 15235, I.E. NORTH 81°46'09" EAST

REFERENCES

MAP NO. 1063  
RECORD OF SURVEY NO. 14405 & 15235  
CITY OF SAN DIEGO DRAWING 40300-D

SWS ENGINEERING, INC.  
261 AUTUMN DRIVE, SUITE 115  
SAN MARCOS, CA 92069  
(760) 744-0011



DOCUMENT No. 2019-0199441  
RECORDED 5/24/2019

Deyan Pantich 5/19/19  
DEYAN PANTICH P.L.S. 8144 EXP. 12-31-20

PUBLIC STREET EASEMENT DEDICATION

IN LOTS 3 THROUGH 7, 9 AND 10 IN BLOCK 'G' OF ENCANTO HEIGHTS, MAP NO. 1063

DESCRIPTION	BY	APPROVED	DATE	FILMED	CITY OF SAN DIEGO, CALIFORNIA	
ORIGINAL	SWS			5-24-19	SHEET 3 OF 5 SHEET	
					PTS 591659	
					1838-6309	
					CCS 83 COORDINATES	
					198-1749	
					NAD 27 COORDINATES	
ACQUIRED						40509-3-B
					STATUS	

EXHIBIT 'B'

IMPERIAL AVENUE  
FORMERLY COUNTY  
ROAD PER MAP NO. 1063

SEE SHEET 3 OF 5

APN: 549-140-05  
LOT 6  
BLOCK G  
MAP 1063

APN: 549-140-06  
LOT 7  
BLOCK G  
MAP 1063

LOT 8  
BLOCK G  
MAP 1063

LOT 28  
BLOCK G  
MAP 1063

LOT 29  
BLOCK G  
MAP 1063

UNNAMED ALLEY

BASIS OF BEARINGS

N81°46'09"E (50.6')

N81°46'09"E 50.60'

N0°34'06"E 148.43'

144.38'

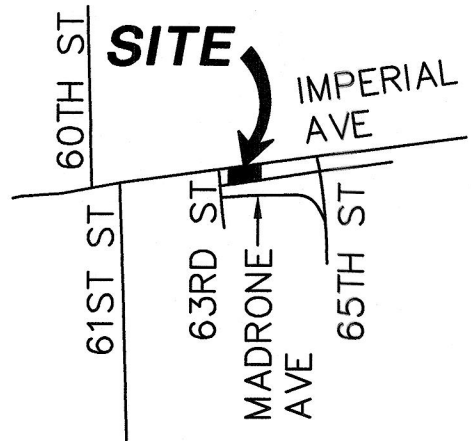
S0°34'14"W 148.48'

144.43'

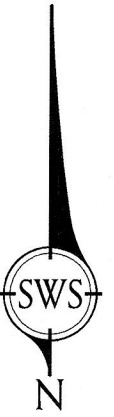
S81°49'57"W 50.58'

101.01'

101.01'



VICINITY MAP  
NOT TO SCALE



LEGEND



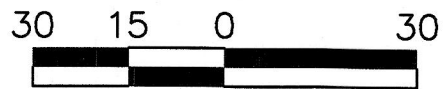
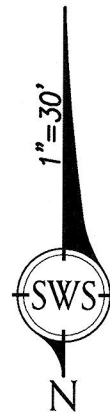
PUBLIC STREET EASEMENT, ACQUIRED  
202± SQUARE FEET (0.005 AC)

APN

ASSESSOR'S PARCEL NUMBER

( )

INDICATES RECORD OR CALCULATED  
DATA PER MAP NO. 1063



SCALE IN FEET  
GRAPHIC SCALE

EASEMENT NOTES

A EASEMENT IN FAVOR OF SAN DIEGO GAS & ELECTRIC COMPANY PER DOCUMENT RECORDED MAY 18, 2018 IN RECORDING 2018-0200846 OF OFFICIAL RECORDS. SAID EASEMENT IS BLANKET IN NATURE AND CANNOT BE PLOTTED FROM THE RECORD

REFERENCES

MAP NO. 1063  
RECORD OF SURVEY NO. 14405 & 15235  
CITY OF SAN DIEGO DRAWING 40300-D

BASIS OF BEARINGS

BASIS OF BEARINGS FOR THIS PLAT IS THE SOUTHERLY RIGHT-OF-WAY LINE OF IMPERIAL AVENUE ACCORDING TO RECORD OF SURVEY NO. 15235, I.E. NORTH 81°46'09" EAST

SWS ENGINEERING, INC.  
261 AUTUMN DRIVE, SUITE 115  
SAN MARCOS, CA 92069  
(760) 744-0011



*Deyan Pantich* 5/24/19

DEYAN PANTICH P.L.S. 8144 EXP. 12-31-20

DOCUMENT No. 2019-0199441

RECORDED 5/24/2019

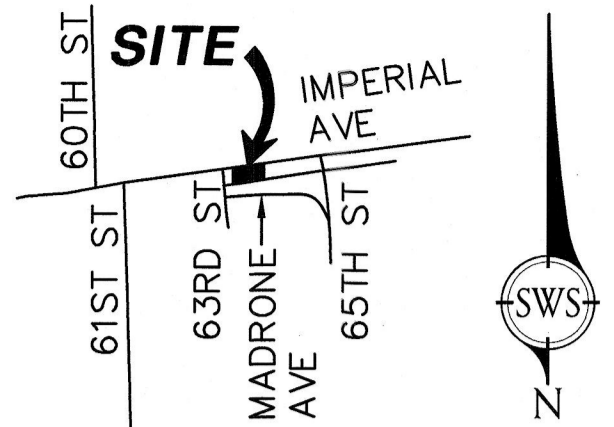
PUBLIC STREET EASEMENT DEDICATION

IN LOTS 3 THROUGH 7, 9 AND 10 IN BLOCK 'G' OF ENCANTO HEIGHTS, MAP NO. 1063

DESCRIPTION	BY	APPROVED	DATE	FILMED	CITY OF SAN DIEGO, CALIFORNIA	
ORIGINAL	SWS			5/24/19	SHEET 4 OF 5 SHEET	
					PTS 591659	
					1838-6309	
					CCS 83 COORDINATES	
					198-1749	
					NAD 27 COORDINATES	
ACQUIRED						40509-4-B
					STATUS	




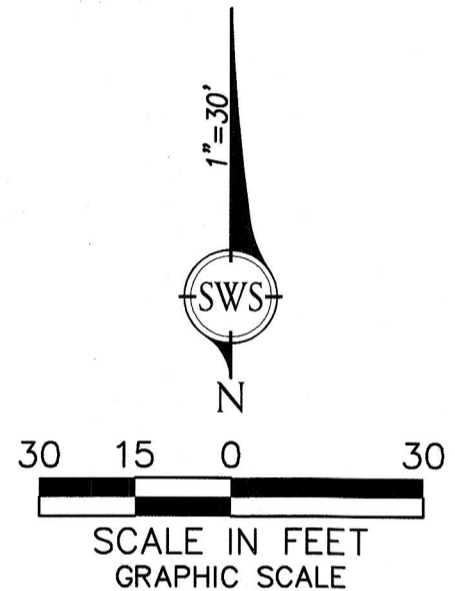
EXHIBIT 'B'



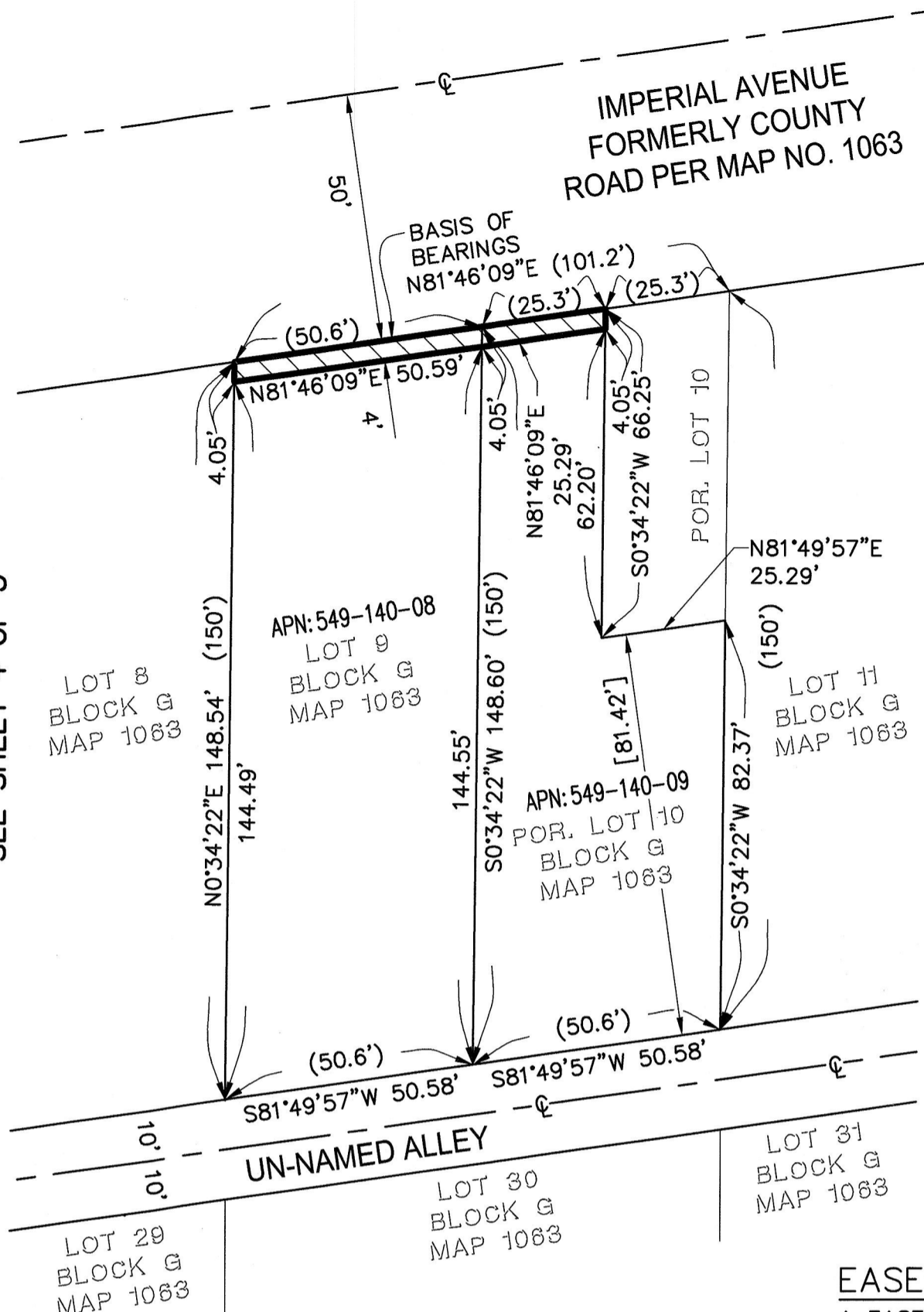
VICINITY MAP  
NOT TO SCALE

LEGEND

-  PUBLIC STREET EASEMENT, ACQUIRED 303± SQUARE FEET (0.007 AC)
- APN ASSESSOR'S PARCEL NUMBER
- ( ) INDICATES RECORD OR CALCULATED DATA PER MAP NO. 1063
- [ ] INDICATES RECORD DATA PER DOC. 82-113398 REC. 4/22/82



SEE SHEET 4 OF 5



EASEMENT NOTES

A EASEMENT IN FAVOR OF SAN DIEGO GAS & ELECTRIC COMPANY PER DOCUMENT RECORDED MAY 18, 2018 IN RECORDING 2018-0200846 OF OFFICIAL RECORDS. SAID EASEMENT IS BLANKET IN NATURE AND CANNOT BE PLOTTED FROM THE RECORD

REFERENCES

MAP NO. 1063  
RECORD OF SURVEY NO. 14405 & 15235  
CITY OF SAN DIEGO DRAWING 40300-D

BASIS OF BEARINGS

BASIS OF BEARINGS FOR THIS PLAT IS THE SOUTHERLY RIGHT-OF-WAY LINE OF IMPERIAL AVENUE ACCORDING TO RECORD OF SURVEY NO. 15235, I.E. NORTH 81°46'09" EAST

SWS ENGINEERING, INC.  
261 AUTUMN DRIVE, SUITE 115  
SAN MARCOS, CA 92069  
(760) 744-0011



DOCUMENT No. 2019-0199441  
RECORDED 5/24/2019

*Deyan Pantich* 5/9/19  
DEYAN PANTICH P.L.S. 8144 EXP. 12-31-20

PUBLIC STREET EASEMENT DEDICATION

IN LOTS 3 THROUGH 7, 9 AND 10 IN BLOCK 'G' OF ENCANTO HEIGHTS, MAP NO. 1063

DESCRIPTION	BY	APPROVED	DATE	FILMED	CITY OF SAN DIEGO, CALIFORNIA	PTS 591659
ORIGINAL	SWS			5.24.19	SHEET 5 OF 5 SHEET	
					<i>Frederick R. Lopez</i> 5/23/19 FOR CITY LAND SURVEYOR DATE	1838-6309 CCS 83 COORDINATES
						198-1749 NAD 27 COORDINATES
ACQUIRED STATUS						40509-5-B