

REFERENCES

MAP Nos. 13082, 8516
 PARCEL MAP Nos. 9538, 10227
 RECORD OF SURVEY No. 20388
 APN 307-060-71
 GRADING PLANS DWG.41011-D

DATA TABLE			
○	BEARING/Δ	RADIUS	LENGTH
A	30°52'52"	175.00'	94.32'
B	S89°57'39"W	-	20.00'
C	S00°02'21"E	-	20.00'
D	N89°57'39"E	-	20.00'

COVENANT OF EASEMENT (COE) FOR PROTECTION OF SENSITIVE BIOLOGICAL RESOURCES ACQUIRED (SEE SHEET 2 FOR DETAILS) AREA = 3.232 ACRES

P.O.B. POINT OF BEGINNING

(COE) LINE DATA, SEE TABLE SHEET 2

FOR EASEMENTS, SEE SHEET 2

BASIS OF BEARINGS

THE BASIS OF BEARINGS FOR THIS SURVEY IS THE CALIFORNIA COORDINATE SYSTEM, CCS83, ZONE 6, EPOCH 1991.35. TRAVERSE MEASUREMENT TO POINT 'A' AND 'B' ARE SHOWN HEREON. THE CCS83 COORDINATES OF POINT 'A' AND 'B' ARE ESTABLISHED FROM G.P.S. STATION "MESQUITE" AND G.P.S. STATION "SD 5-56 NE 1987" PER R.O.S. MAP NO. 14492. THE BEARING FROM POINT 'A' TO POINT 'B' IS N00°04'18"W.

QUOTES BEARINGS FROM REFERENCE MAPS AND DEEDS MAY OR MAY NOT BE IN TERMS OF SAID SYSTEM.

THE COMBINED GRID FACTOR AT POINT 'A' IS 0.999975653.
 GRID DISTANCE = GROUND DISTANCE X COMBINED GRID FACTOR. ELEVATION AT POINT 'A' IS 187.08' MEAN SEA LEVEL DATUM.

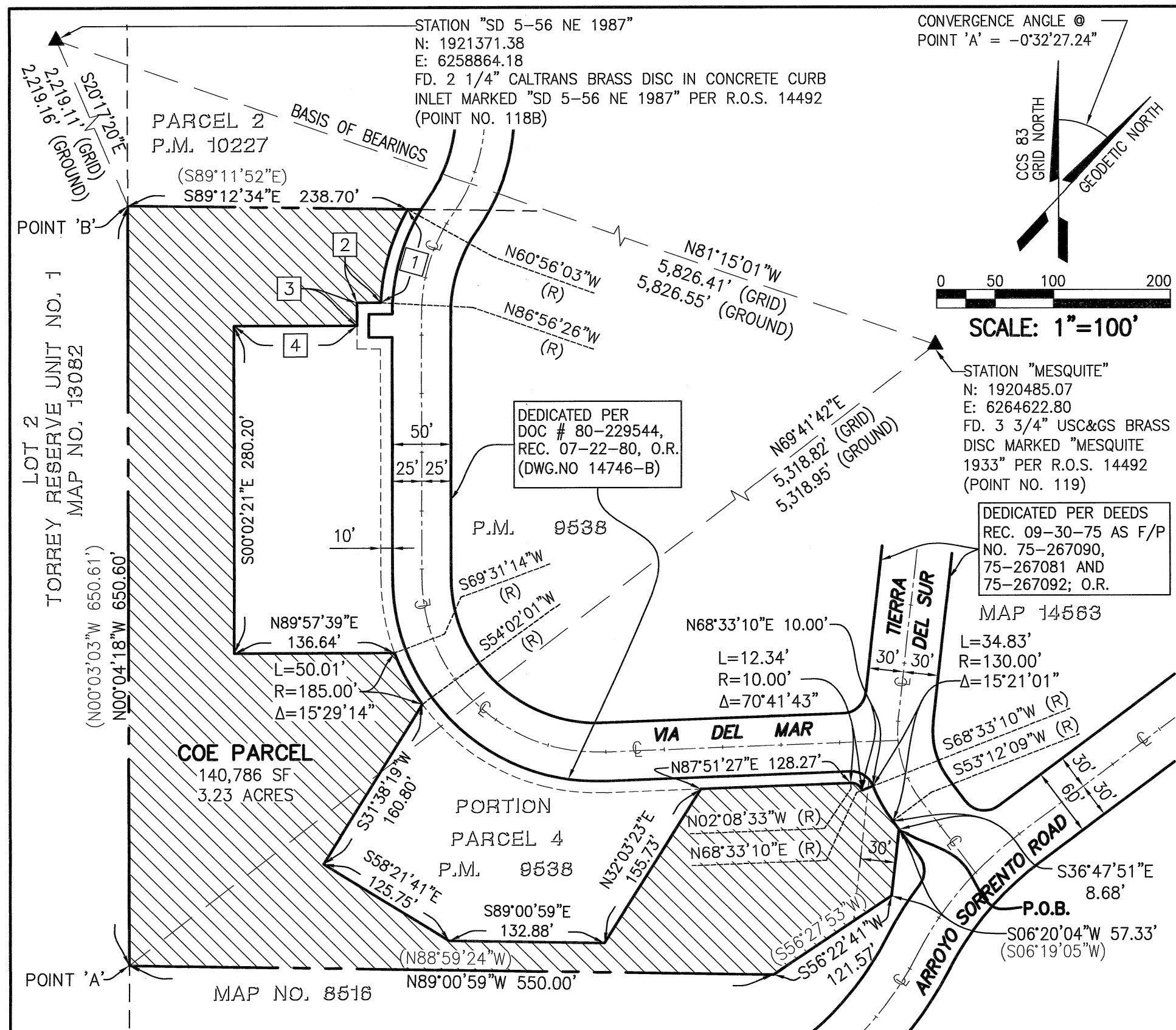
JP ENGINEERING, INC.
 CIVIL ENGINEERING ■ LAND PLANNING ■ SURVEYING
 4849 RONSON COURT, SUITE 105
 SAN DIEGO, CA 92111
 (858) 569-7377 FAX (858) 569-0830

JHP 03-25-19
 J.H. PALACIOS, R.C.E. 32031 DATE

DOCUMENT No. 2019-0189618
 RECORDED MAY 20, 2019

COVENANT OF EASEMENT FOR PROTECTION OF SENSITIVE
 BIOLOGICAL RESOURCES AND STEEP HILLSIDES
 PORTION OF PARCEL 4 OF P.M. 9538

DESCRIPTION	BY	APPROVED	DATE	FILMED	CITY OF SAN DIEGO, CALIFORNIA SHEET 1 OF 2 SHEETS	PTS	592824
ORIGINAL	DHN					I.O.	N/A
		CD	5/16/19			1918-6257	
					For Luke R. K. Age FOR CITY LAND SURVEYOR	5/20/19 DATE	CCS 83 COORDINATES
							278-1697 NAD 27 COORDINATES
COMPLETED					STATUS	40515-1-B	



EASEMENTS (#)

- ① 10' SLOPE RIGHTS EASEMENT GRANTED TO CITY OF SAN DIEGO REC. 07/22/1980 AS DOC. # 80-229541, O.R.
- ② 4' AND 12' S.D.G. & E. Co. EASEMENTS, REC. 04/28/1977 AS DOC. # 77-159014 AND REC. 08/24/2005 AS FILE # 2005-0731108, O.R.
- ③ 30' ROAD, WATER, PIPE LINES, WELL AND RESERVOIR EASEMENT GRANTED TO P.S. FLETCHER AND IRENE M. FLETCHER, REC. 09/05/1958 IN BOOK 7243, PAGE 255, O.R.

() RECORD INFORMATION PER PM. 9538

DATA TABLE			
#	BEARING/Δ	RADIUS	LENGTH
1	26°00'23"	185.00'	83.97'
2	S89°57'39"W	-	20.27'
3	S00°02'21"E	-	20.00'
4	S89°57'39"W	-	104.99'



JP ENGINEERING, INC.
 CIVIL ENGINEERING ■ LAND PLANNING ■ SURVEYING
 4849 RONSON COURT, SUITE 105
 SAN DIEGO, CA 92111
 (858) 569-7377 FAX (858) 569-0830



JH Palacios 03-25-19

J.H. PALACIOS, R.C.E. 32031 DATE

DOCUMENT No. 2019-0189618

RECORDED MAY 20, 2019

**COVENANT OF EASEMENT FOR PROTECTION OF SENSITIVE
 BIOLOGICAL RESOURCES AND STEEP HILLSIDES
 PORTION OF PARCEL 4 OF P.M. 9538**

DESCRIPTION	BY	APPROVED	DATE	FILMED	CITY OF SAN DIEGO, CALIFORNIA	PTS
ORIGINAL	DHN				SHEET 2 OF 2 SHEETS	592824
		<i>LED</i>	<i>5/14/19</i>			N/A
					<i>J. R. P. Jr.</i> FOR CITY LAND SURVEYOR	1918-6257
					DATE	CCS 83 COORDINATES
						278-1697
						NAD 27 COORDINATES
COMPLETED	STATUS					40515-2-B