

ASSESSORS PARCEL NO.: 637-04

SHEET 1 OF 2
SEE SHEET 2 FOR MAP

SAN DIEGO

LEGEND:

PARCEL "A"

CITY OF SD FEE PARCEL
(DAIRY MART RD, INCL PAR "A" & "B")
39,025 SQ. FT. (0.896 AC.) GROSS
29,094 SQ. FT. (0.668 AC.) NET
(EXCLUDES PAR "B")

PARCEL "B"

PROPOSED VACATION
(INCLUDES OTAY WATER ESMT)
GROSS 9,930.94 SQ. FT., 0.228 AC.
OTAY ESMT 5,048.77 SQ. FT., 0.116 AC.
NET 4882.17 SQ. FT., 0.112 AC.

BOUNDARY LINE VELCE
INVESTMENT CO.

INDICATES PROPOSED OTAY
WATER EASEMENT RESERVATION
5,048.77 SQ. FT., 0.116 AC.

INDICATES PROPOSED COX, AT&T
AND ACCESS EASEMENT RESERVATION
835.34 SQ. FT., 0.019 AC.

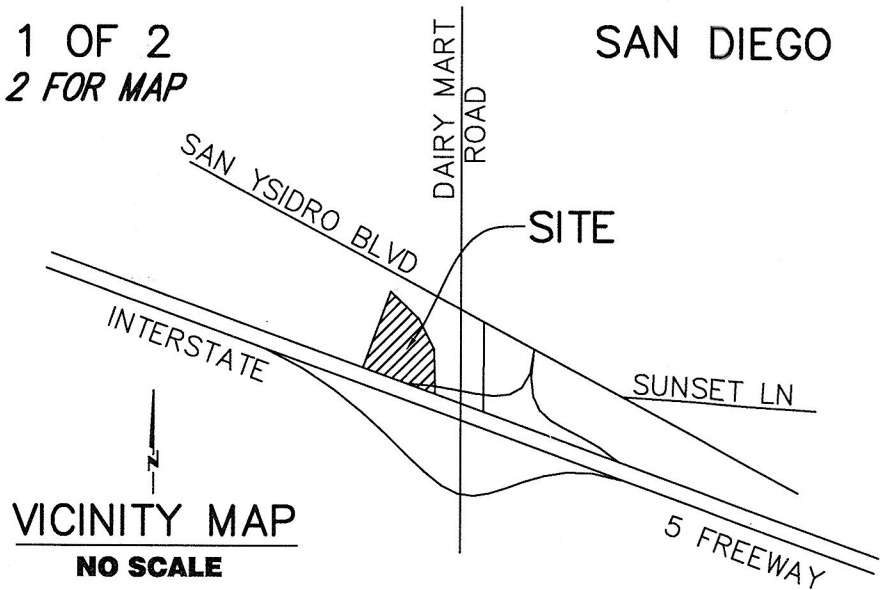
INDICATES ACCESS RIGHTS RELINQUISHED
PER CAL-TRANS R.O.W. MAP L.O.-2508

P.O.B. • INDICATES POINT OF BEGINNING

T.P.O.B. • INDICATES TRUE POINT OF BEGINNING

REFERENCES

CAL-TRANS RIGHT OF WAY MAP L.O. 2508
STATE HIGHWAY MAP NO.136



LINE TABLE

L1	N31°34'01"W	104.43'
L2	N31°34'01"W	59.37'
L3	N31°34'01"W	45.06'
L4	N27°03'08"E	25.93'
L5	N27°03'08"E	31.89'
L6	N27°03'08"E	36.79'
L7	N66°36'28"W	64.61'
L8	N66°36'28"W	55.05'
L9	N66°36'28"W	9.55'
L10	N89°29'21"E	13.73'
L11	N36°36'00"E	24.41'
L12	N70°21'32"E	37.91'

CURVE TABLE

C1	D=08°52'10"	R=196.00'	L=30.34'
C2	D=03°39'22"	R=196.00'	L=12.51'
C3	D=05°12'48"	R=196.00'	L=17.83'

RADIAL LINE TABLE

R1	N23°23'32"E
R2	N27°02'53"E
R3	N32°15'42"E

DATE OF PLOT 08/22/2018
FILE NO. 1440-VAC

ACCULINE SURVEY, INC.
1919 GRAND AVE. SUITE 1G,
SAN DIEGO, CA 92109.
(858) 483-6665

[Signature] DATE: 8/22/18
RUDY P. PACHECO L.S. 5717



RESOLUTION NO. R-312245
RECORDED MAR 08, 2019
DOCUMENT NO. 2019-0083741
RECORDED _____

PUBLIC STREET EASEMENT VACATION

PORTION OF THE SW 1/4 OF SECTION 35, TOWNSHIP 18 SOUTH, RANGE 2 WEST, SBM, CITY OF SAN DIEGO, COUNTY OF SAN DIEGO, CALIFORNIA, PORTION OF PARCEL 21789-8 AS RELINQUISHED TO CITY OF SAN DIEGO PER DOC. NO. 74-036848 FILED ON FEB. 13, 1974.

DESCRIPTION	BY	APPROVED	DATE	FILMED	CITY OF SAN DIEGO, CALIFORNIA SHEET 1 OF 2 SHEETS	PTS NO. <u>593646</u>
ORIGINAL	RPP	<u>S.O.</u>	<u>3/18/19</u>			I.O NO. <u>N/A</u>
					<u>Torres R. P.</u> FOR CITY LAND SURVEYOR	<u>1782-6309</u> CCS. 83 COORDINATES
					<u>2/4/18</u> DATE	<u>142-1749</u> LAMBERT COORDINATES
COMPLETED						<u>40535-1-B</u>
STATUS						

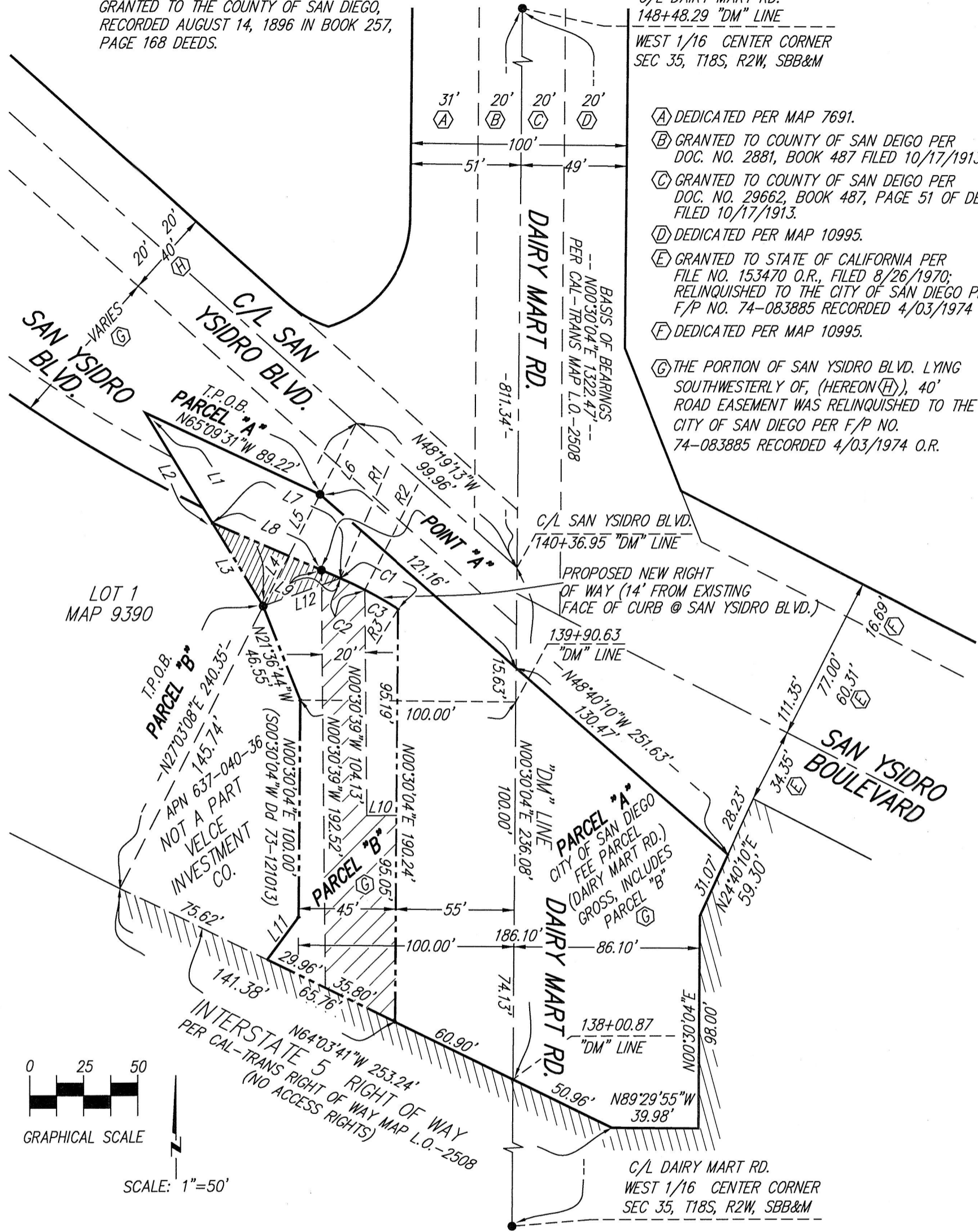
SHEET 2 OF 2

SEE SHEET 1 FOR DATA TABLES AND LEGEND

(H) 40' ROAD EASEMENT (20' EACH SIDE OF CENTERLINE OF SAN YSIDRO BLVD.) GRANTED TO THE COUNTY OF SAN DIEGO, RECORDED AUGUST 14, 1896 IN BOOK 257, PAGE 168 DEEDS.

P.O.B. PARCELS "A" & "B"
C/L DAIRY MART RD.
148+48.29 "DM" LINE
WEST 1/16 CENTER CORNER
SEC 35, T18S, R2W, SBB&M

- (A) DEDICATED PER MAP 7691.
- (B) GRANTED TO COUNTY OF SAN DIEGO PER DOC. NO. 2881, BOOK 487 FILED 10/17/1913.
- (C) GRANTED TO COUNTY OF SAN DIEGO PER DOC. NO. 29662, BOOK 487, PAGE 51 OF DEEDS, FILED 10/17/1913.
- (D) DEDICATED PER MAP 10995.
- (E) GRANTED TO STATE OF CALIFORNIA PER FILE NO. 153470 O.R., FILED 8/26/1970; RELINQUISHED TO THE CITY OF SAN DIEGO PER F/P NO. 74-083885 RECORDED 4/03/1974 O.R.
- (F) DEDICATED PER MAP 10995.
- (G) THE PORTION OF SAN YSIDRO BLVD. LYING SOUTHWESTERLY OF, (HEREON (H)), 40' ROAD EASEMENT WAS RELINQUISHED TO THE CITY OF SAN DIEGO PER F/P NO. 74-083885 RECORDED 4/03/1974 O.R.



PUBLIC STREET EASEMENT VACATION

PORTION OF THE SW 1/4 OF SECTION 35, TOWNSHIP 18 SOUTH, RANGE 2 WEST, SBM, CITY OF SAN DIEGO, COUNTY OF SAN DIEGO, CALIFORNIA, PORTION OF PARCEL 21789-8 AS RELINQUISHED TO CITY OF SAN DIEGO PER DOC. NO. 74-036848 FILED ON FEB. 13, 1974.

DESCRIPTION	BY	APPROVED	DATE	FILMED	CITY OF SAN DIEGO, CALIFORNIA	PTS NO. 593646
ORIGINAL	RPP	S.O.	3/18/19		SHEET 2 OF 2 SHEETS	I.O NO. N/A
					<i>Frank R. R. M.</i> FOR CITY LAND SURVEYOR	1782-6309 CCS. 83 COORDINATES
					2/4/18 DATE	142-1749 LAMBERT COORDINATES
COMPLETED				STATUS		40535-2-B