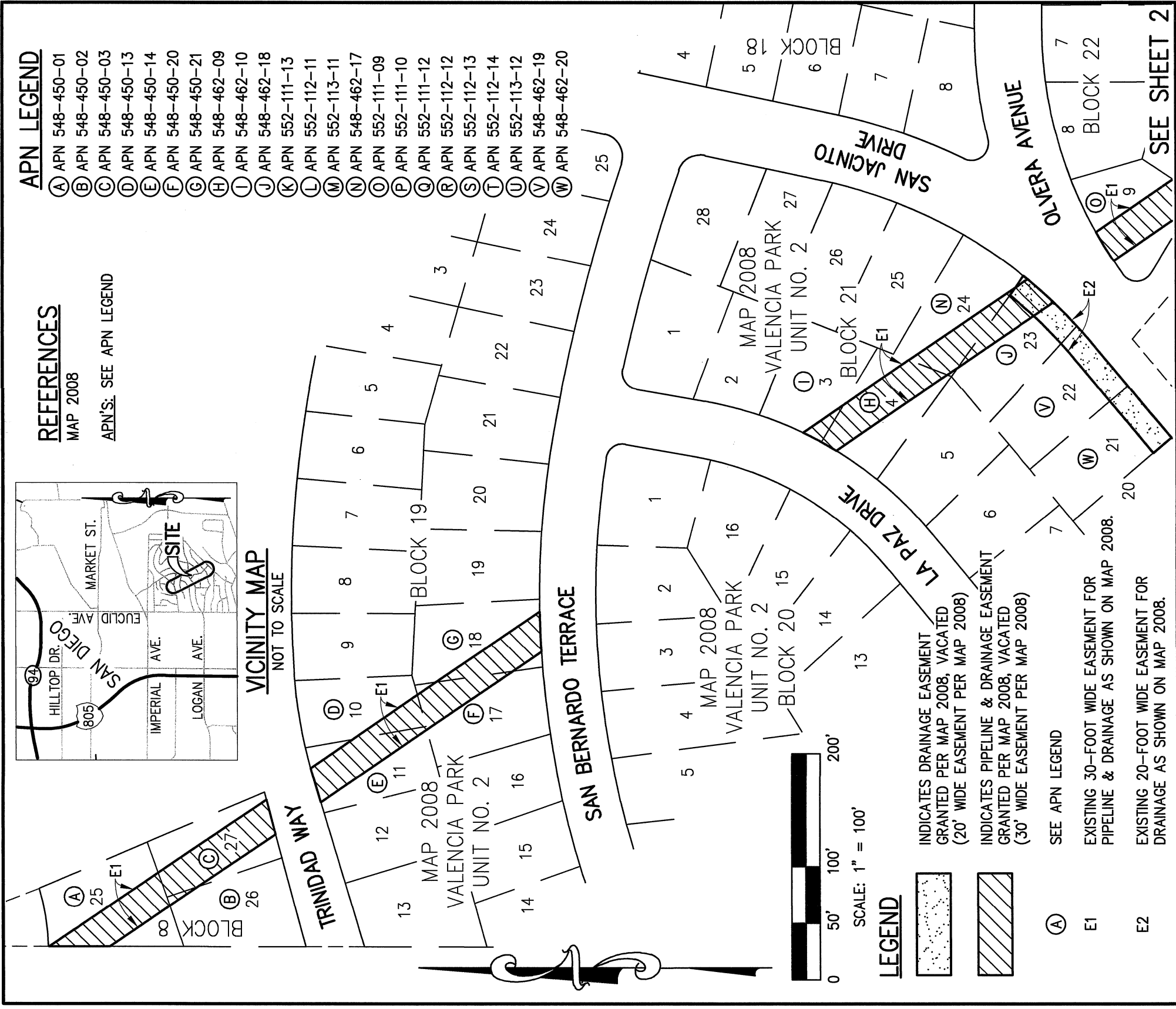


# EXHIBIT "B"



**AGUIRRE & ASSOCIATES**  
8363 CENTER DR, SUITE 5A  
LA MESA, CA 91942  
PH: (619)464-6978 FAX: (619)464-7203

*Michael A. Havener* 7-9-18  
MICHAEL A. HAVENER, PLS 7354

**LICENSED LAND SURVEYOR**  
MICHAEL A. HAVENER  
No. 7354  
STATE OF CALIFORNIA

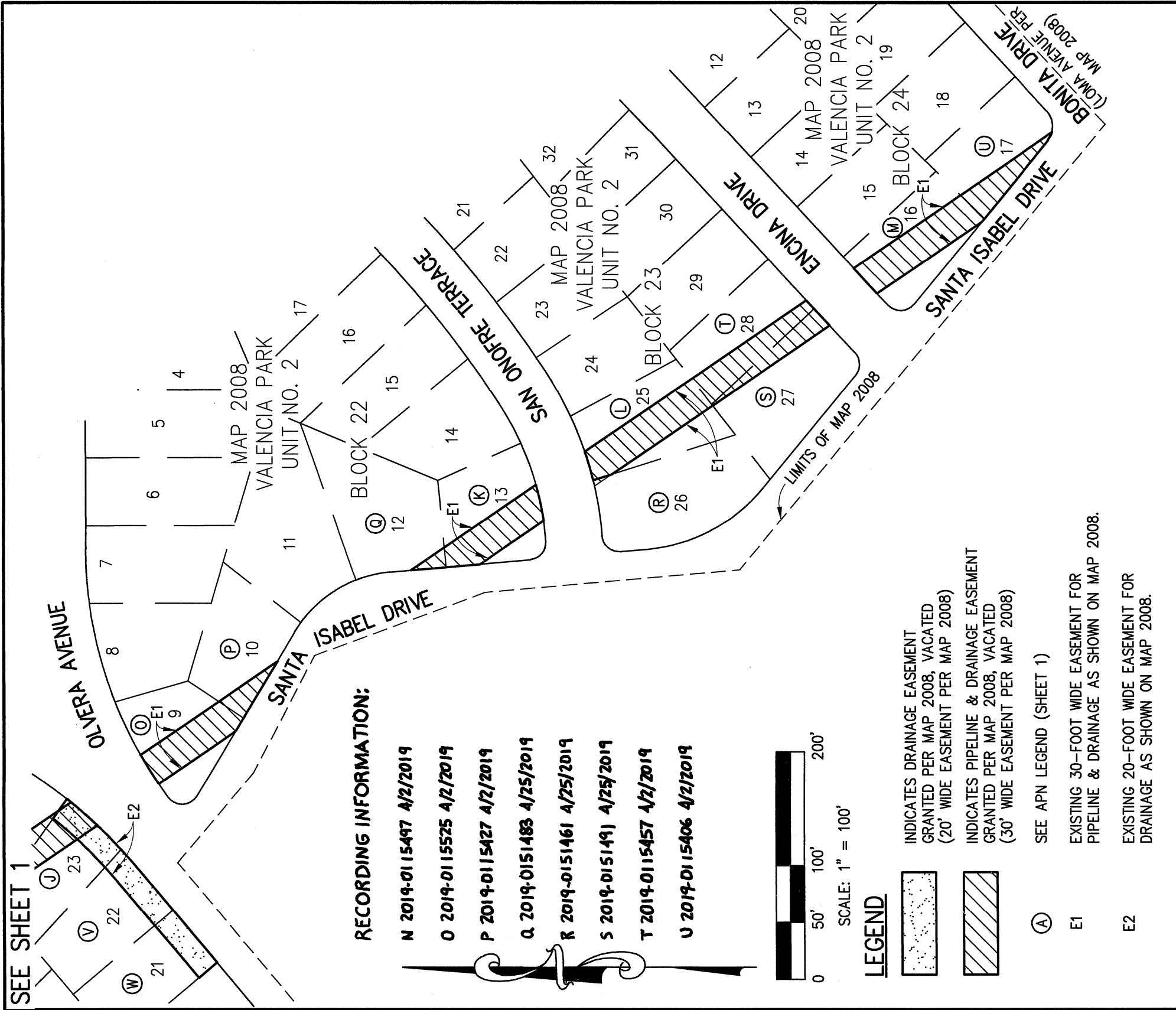
RESOLUTION NO. CM-6806  
DOCUMENT NO. SEE RECORDING INFO SHEET 2  
RECORDED SEE RECORDING INFO SHEET 2

**PIPELINE & DRAINAGE EASEMENT VACATION OVER BLOCKS 8, 19, 21, 22, 23, AND 24 OF VALENCIA PARK, UNIT NO. 2, MAP NO. 2008**

DESCRIPTION	BY	APPROVED	DATE	FILMED
DRAWN	KA		9/7/17	
CHECKED	MH		7/9/18	
REVISED		CEJ	10/8/18	
VACATED				

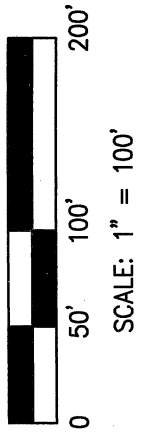
CITY OF SAN DIEGO, CALIFORNIA	PTS 579794
SHEET 1 OF 2 SHEETS	I.O. 21002864
<i>Vanessa R. Ford</i> FOR CITY LAND SURVEYOR	1834-6305 C.C.S 83 COORDINATES
	194-1745 LAMBERT COORDINATES
	<b>40567-B</b>

# EXHIBIT "B"



**RECORDING INFORMATION:**

- N 2019-0115497 4/2/2019
- O 2019-0115525 4/2/2019
- P 2019-0115427 4/2/2019
- Q 2019-0151483 4/25/2019
- R 2019-0151461 4/25/2019
- S 2019-0151491 4/25/2019
- T 2019-0115457 4/2/2019
- U 2019-0115406 4/2/2019



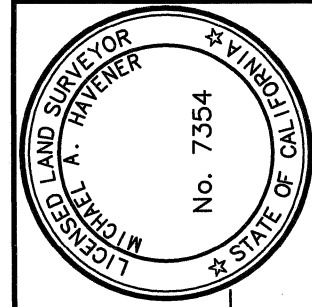
**LEGEND**

- INDICATES DRAINAGE EASEMENT GRANTED PER MAP 2008, VACATED (20' WIDE EASEMENT PER MAP 2008)
- INDICATES PIPELINE & DRAINAGE EASEMENT GRANTED PER MAP 2008, VACATED (30' WIDE EASEMENT PER MAP 2008)
- SEE APN LEGEND (SHEET 1)
- E1 EXISTING 30-FOOT WIDE EASEMENT FOR PIPELINE & DRAINAGE AS SHOWN ON MAP 2008.
- E2 EXISTING 20-FOOT WIDE EASEMENT FOR DRAINAGE AS SHOWN ON MAP 2008.

**AGUIRRE & ASSOCIATES**

8363 CENTER DR, SUITE 5A  
 LA MESA, CA 91942  
 PH: (619)464-6978 FAX: (619)464-7203

*Michael A. Havener* 7-9-18  
 MICHAEL A. HAVENER, PLS 7354



RESOLUTION NO. CM-6806  
 DOCUMENT NO. SEE RECORDING INFO ABOVE  
 RECORDED SEE RECORDING INFO ABOVE

**PIPELINE & DRAINAGE EASEMENT VACATION OVER BLOCKS 8, 19, 21, 22, 23, AND 24 OF VALENCIA PARK, UNIT NO. 2, MAP NO. 2008**

DESCRIPTION	BY	APPROVED	DATE	FILMED	CITY OF SAN DIEGO, CALIFORNIA	PTS 579794	
DRAWN	KA		9/7/17		SHEET 2 OF 2 SHEETS	I.O. 21002864	
CHECKED	MH		7/9/18				
REVISED		LED	10/8/18				
						1834-6305	
						C.C.S 83 COORDINATES	
						194-1745	
						LAMBERT COORDINATES	
<b>VACATED</b>							<b>40567-B</b>