

BASIS OF BEARINGS

THE BASIS OF BEARINGS FOR THIS SURVEY IS THE CALIFORNIA COORDINATE SYSTEM, CCS83, ZONE 6, EPOCH 1991.35. TRAVERSE MEASUREMENTS TO POINT 'A' AND 'B' ARE SHOWN HEREON. THE CCS83 COORDINATES OF POINT 'A' AND 'B' ARE ESTABLISHED FROM G.P.S. STATION "MESQUITE" AND G.P.S. STATION "SD 5-56 NE 1987" PER R.O.S. MAP NO. 14492. THE BEARING FROM POINT 'A' TO POINT 'B' IS S75°31'53"W.

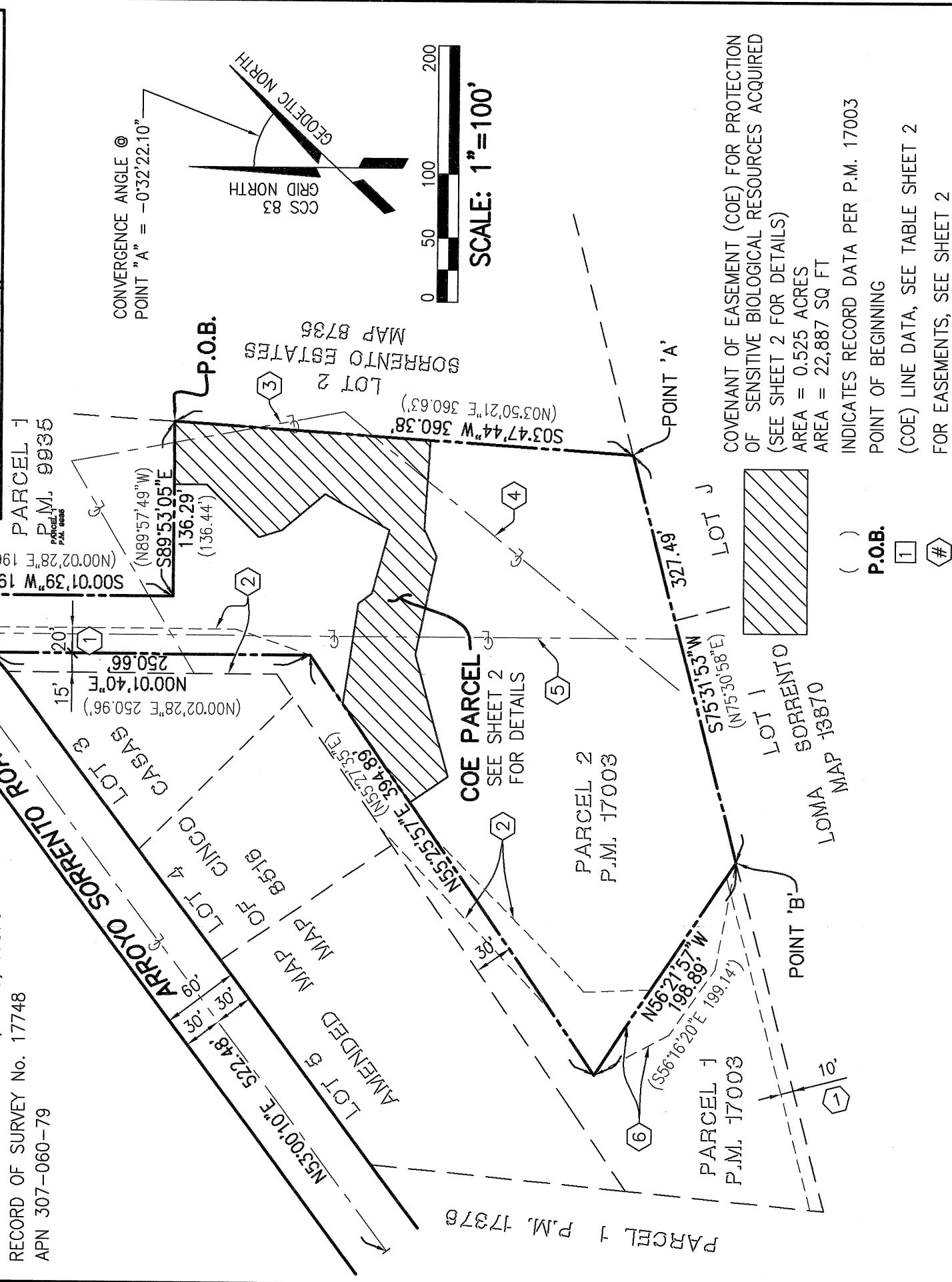
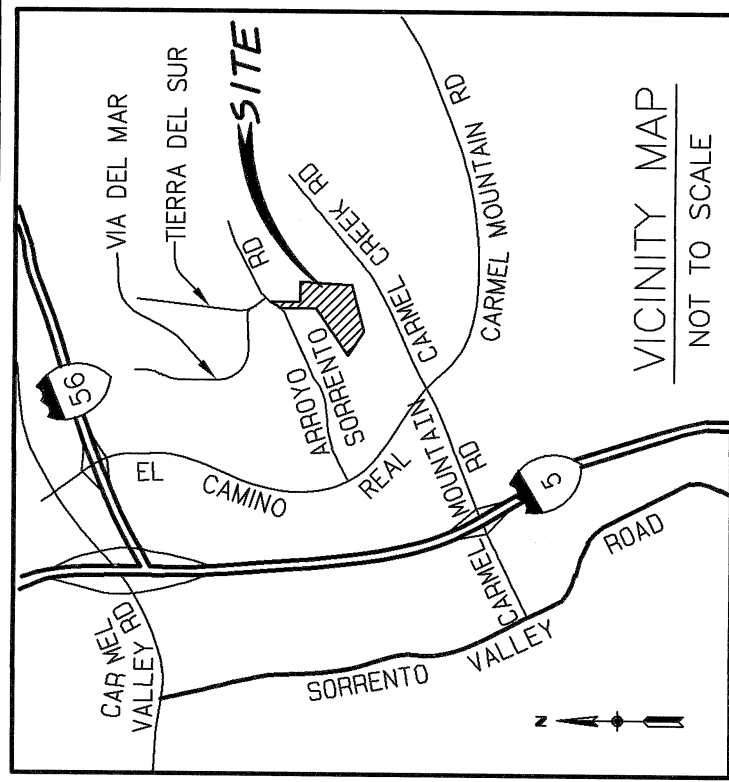
QUOTED BEARINGS FROM REFERENCE MAPS AND DEEDS MAY OR MAY NOT BE IN TERMS OF SAID SYSTEM.

THE COMBINED GRID FACTOR AT POINT 'A' IS 0.999975802. GRID DISTANCE = GROUND DISTANCE X COMBINED GRID FACTOR. ELEVATION AT POINT 'A' IS 188.10' MEAN SEA LEVEL.

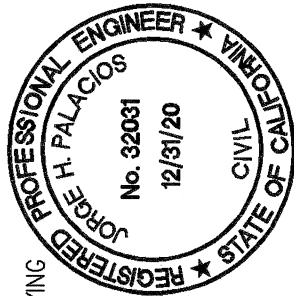
($\Delta=12'05.35"$ L=69.65')
 $\Delta=12'01.35"$
 R=330.00'
 L=69.27'
 (N43°18'55"W (R))
 (N43°31'10"W (R))

REFERENCES

SUBDIVISION MAPS Nos. 13870, 8735, 8516
 PARCEL MAPS Nos. 17003, 9935, 17376
 RECORD OF SURVEY No. 17748
 APN 307-060-79



JP ENGINEERING, INC.
 CIVIL ENGINEERING ■ LAND PLANNING ■ SURVEYING
 4849 RONSON COURT, SUITE 105
 SAN DIEGO, CA 92111
 (858) 569-7377 FAX (858) 569-0830



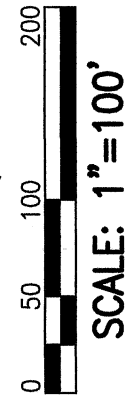
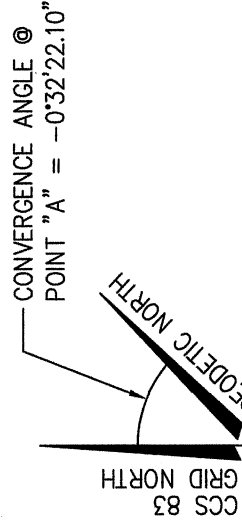
J. Palacios

J.H. PALACIOS, R.C.E. 32031 02-27-19 DATE

DOCUMENT No. 2019-0124642
 RECORDED APRIL 8, 2019

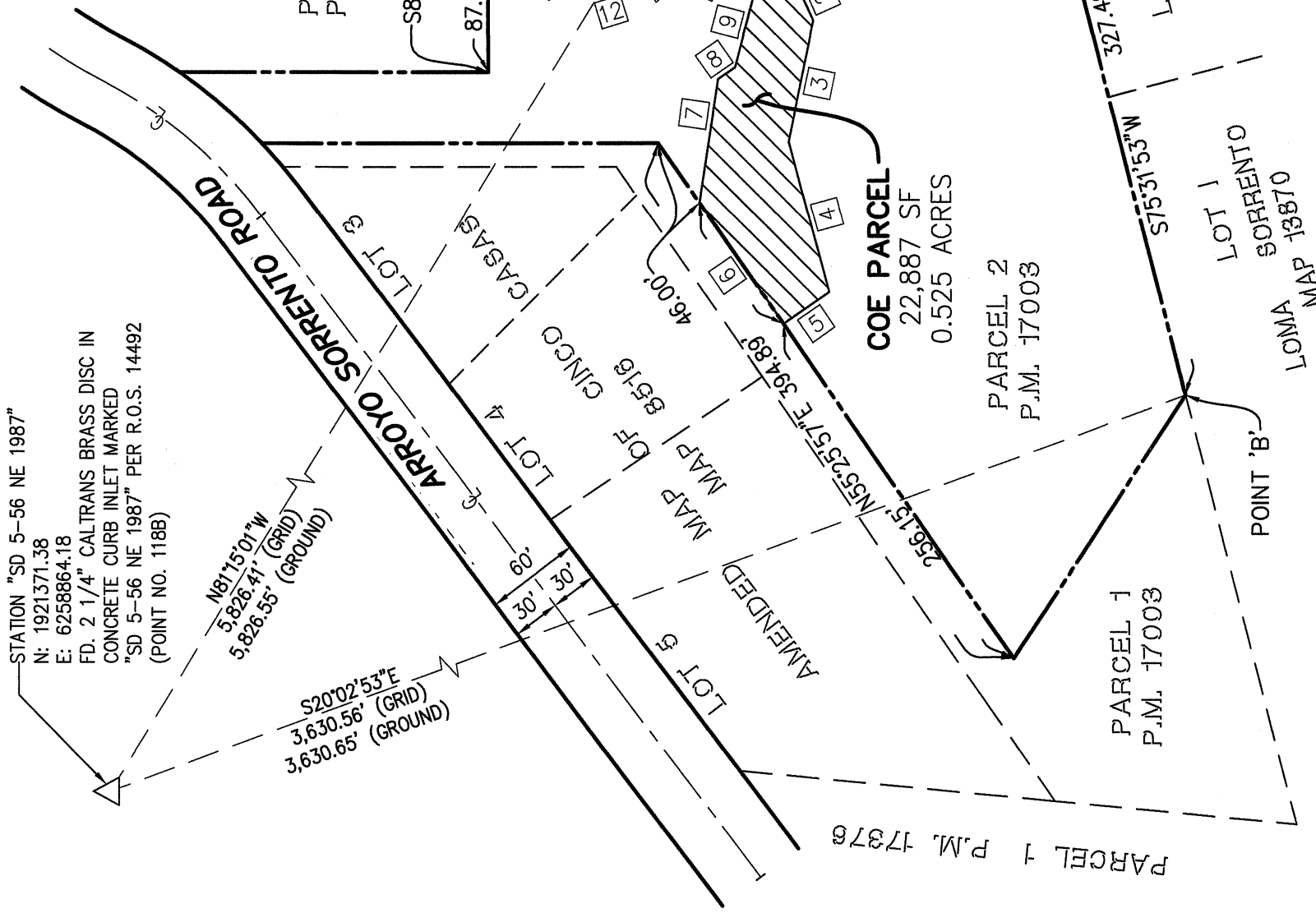
COVENANT OF EASEMENT FOR PROTECTION OF SENSITIVE BIOLOGICAL RESOURCES AND STEEP HILLSIDES PORTION OF PARCEL 2 OF P.M. 17003

DESCRIPTION	BY	APPROVED	DATE	FILMED	CITY OF SAN DIEGO, CALIFORNIA	PTS	594865
ORIGINAL	DHN				SHEET 1 OF 2 SHEETS	I.O.	N/A
		CED	4/5/19				1916-6257
							CCS 83 COORDINATES
							276-1697
							NAD 27 COORDINATES
COMPLETED							40613-1-B



STATION "SD 5-56 NE 1987"
 N: 1921371.38
 E: 6258864.18
 FD. 2 1/4" CALTRANS BRASS DISC IN
 CONCRETE CURB INLET MARKED
 "SD 5-56 NE 1987" PER R.O.S. 14492
 (POINT NO. 118B)

S20°02'53"E
 3,630.56' (GRID)
 3,630.65' (GROUND)



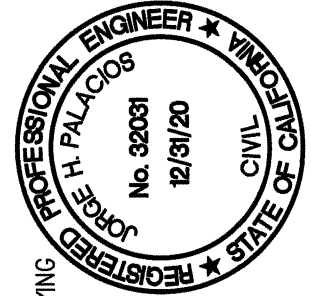
#	BEARING	LENGTH
1	N86°12'16"W	69.43'
2	S65°45'24"W	23.33'
3	N78°12'21"W	78.31'
4	S74°48'14"W	98.30'
5	N34°34'03"W	35.69'
6	N55°25'57"E	92.74'
7	S81°31'37"E	79.31'
8	S34°49'06"E	13.19'
9	S75°13'52"E	51.43'
10	N28°31'13"E	57.74'
11	N39°50'57"W	44.11'
12	N17°01'12"W	18.64'
13	N44°31'04"E	58.11'
14	N00°06'55"E	25.17'
15	S89°53'05"E	48.91'
16	S03°47'44"W	201.00'

STATION "MESQUITE"
 N: 1920485.07
 E: 6264622.80
 FD. 3 3/4" USC&GS BRASS
 DISC MARKED "MESQUITE 1933"
 PER R.O.S. 14492
 (POINT NO. 119)

EASEMENTS

- ① INGRESS AND EGRESS EASEMENT
REC. 07/07/1993 AS DOC.# 93-0432264
- ② PRIVATE ACCESS EASEMENT
PER PARCEL MAP 17003
REC. 11/25/1992 AS FILE NO. 92-761222
- ③ CENTERLINE 12' SDG&E Co. EASEMENT
REC. 01/23/1957 IN BOOK 6429, PAGE 391
- ④ CENTERLINE SDG&E Co. EASEMENT
REC. 08/13/1936 IN BOOK 550, PAGE 151
- ⑤ CENTERLINE 40' PRIVATE ROAD EASEMENT
REC. 03/13/1957 IN BOOK 6493, PAGE 178
- ⑥ PRIVATE ACCESS EASEMENT
REC. 07/07/1993 AS DOC.# 93-0432264
REC. 07/07/1993 AS DOC.# 93-0432266

JP ENGINEERING, INC.
 CIVIL ENGINEERING ■ LAND PLANNING ■ SURVEYING
 4849 RONSON COURT, SUITE 105
 SAN DIEGO, CA 92111
 (858) 569-7377 FAX (858) 569-0830



J. Palacios
 J.H. PALACIOS, R.C.E. 32031 DATE 02-27-19

DOCUMENT No. **2019-0124642**
 RECORDED **APRIL 8, 2019**

COVENANT OF EASEMENT FOR PROTECTION OF SENSITIVE
 BIOLOGICAL RESOURCES AND STEEP HILLSIDES
 PORTION OF PARCEL 2 OF P.M. 17003

DESCRIPTION	BY	APPROVED	DATE	FILMED	PTS
ORIGINAL	DHN				594865
		<i>LED</i>	<i>4/5/19</i>		I.O. N/A
					1916-6257
					CCS 83 COORDINATES
					276-1697
					NAD 27 COORDINATES
					40613-2-B

COMPLETED STATUS