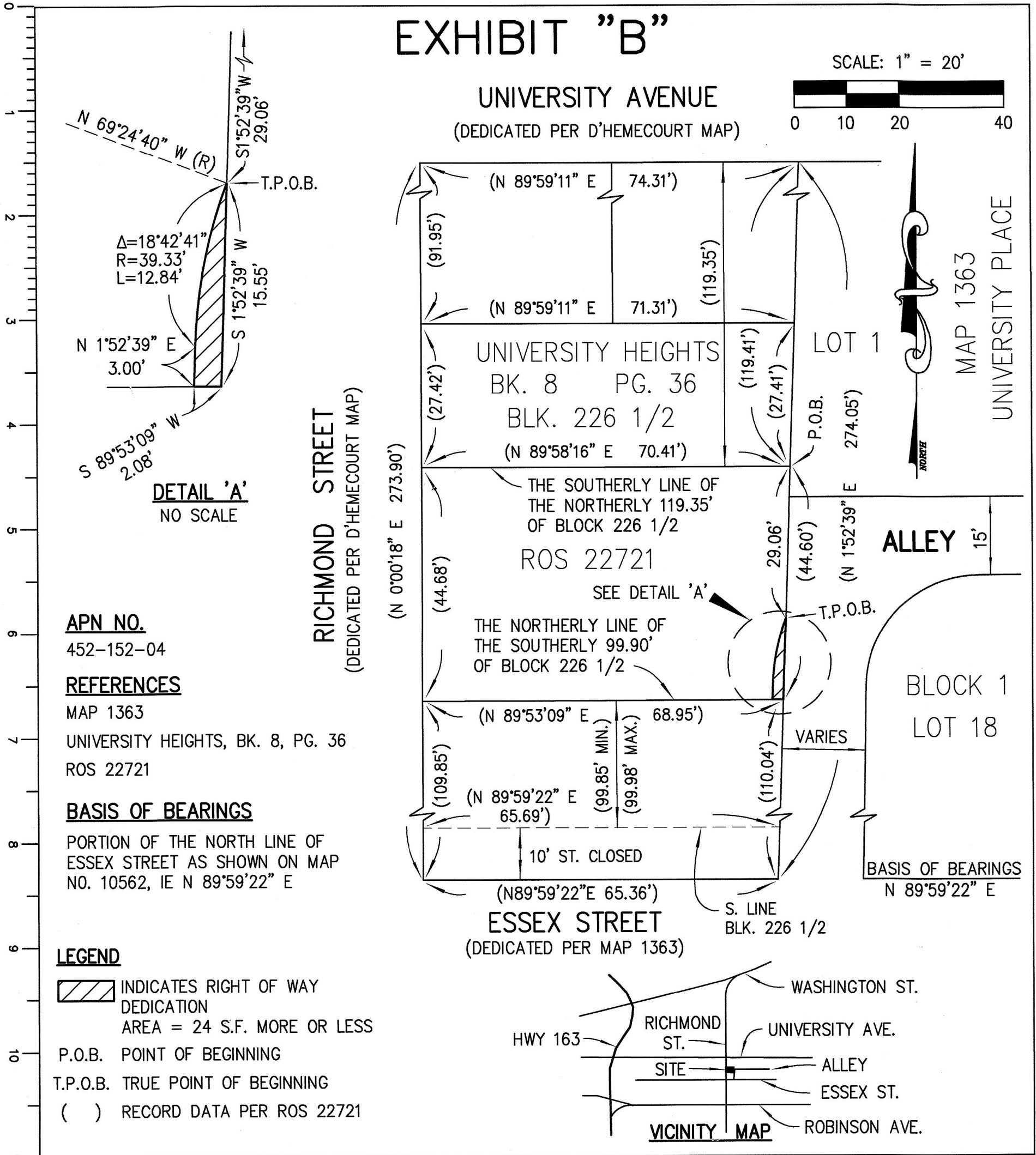
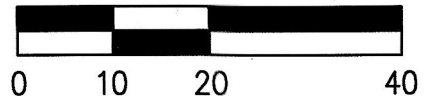


EXHIBIT "B"

UNIVERSITY AVENUE
(DEDICATED PER D'HEMECOURT MAP)

SCALE: 1" = 20'



AGUIRRE & ASSOCIATES
8363 CENTER DR., SUITE 5A
LA MESA, CA 91942
PH: (619)464-6978 FAX: (619)464-7203

LAND SURVEYING · MAPPING · RIGHT-OF-WAY ENGINEERING



DOCUMENT NO. 2019-0132267
RECORDED APRIL 12, 2019

Michael A. Havener 3-27-2019
MICHAEL A. HAVENER DATE
PLS 7354

RIGHT OF WAY DEDICATION
IN PORTION OF FRACTIONAL BLOCK 226 1/2 OF UNIVERSITY HEIGHTS
IN BOOK 8, PAGE 36 OF LIS PENDENS

DESCRIPTION	BY	APPROVED	DATE	FILMED	CITY OF SAN DIEGO, CALIFORNIA	PTS
ORIGINAL	AGUIRRE				SHEET 1 OF 1 SHEETS	604477
		S.D.	4/24/19		<i>Andrew R. Lopez</i> 4/3/19 DEPUTY CITY SURVEYOR DATE	N/A
						1852-6283
						CCS 83 COORDINATES
						212-1723
						NAD 27 COORDINATES
						40714-1-B
STATUS						