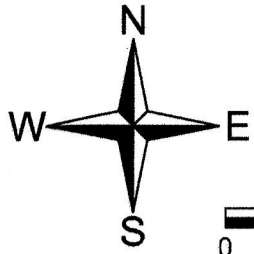


EXHIBIT "B"



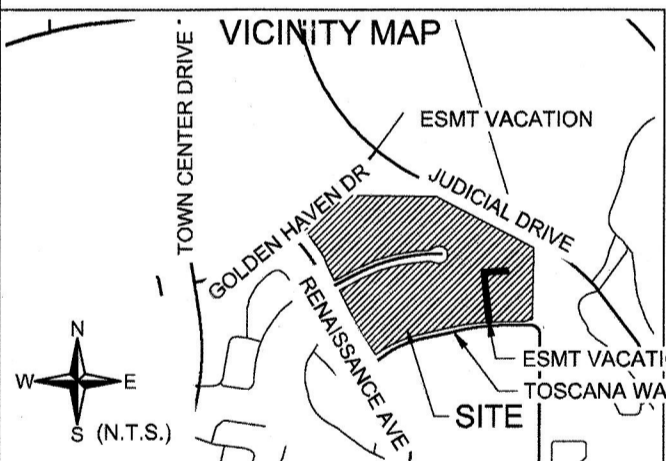
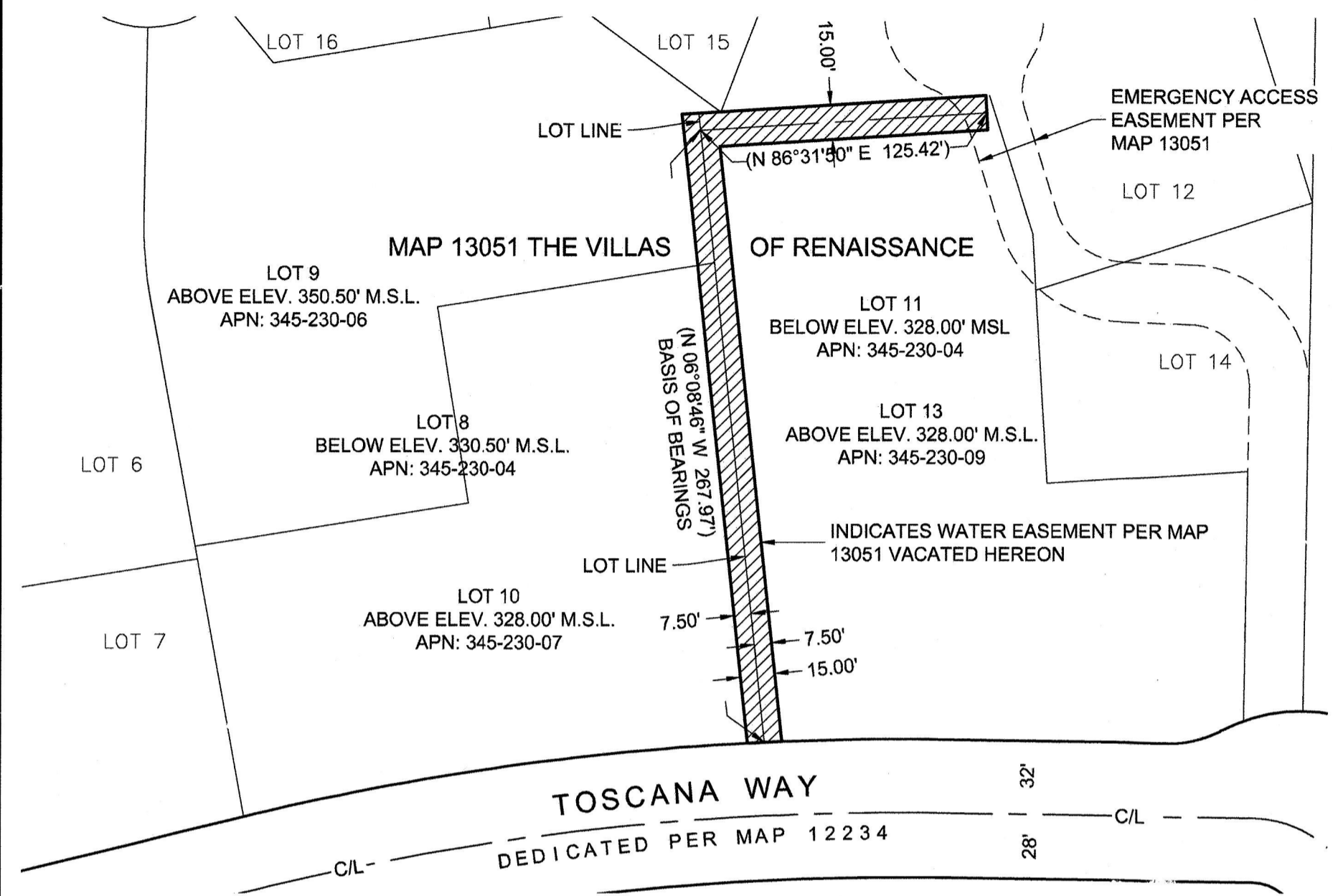
SCALE: 1" = 60'
 0 60' 120'

BASIS OF BEARINGS

WESTERLY LINE OF LOT 11 OF
 MAP 13051. IE: N 06°08'46" W

REFERENCES

MAP 13051
 MAP 12234



LEGEND

- LOT LINE
- RIGHT-OF-WAY LINE
- CENTER LINE
- - - - EASEMENT LINE
- () RECORD PER MAP 13051
- WATER EASEMENT VACATED HEREON 5901 SQUARE FEET (0.135 ACRES)

NOTE:

MAP NO 13051 IS A VERTICAL SUBDIVISION MAP

Paul E. Goebel
 PAUL E. GOEBEL PLS 8486
 1/23/2019
PASCO LARET SUITER
 & ASSOCIATES
 PH. 858.259.8212 | PLSAENGINEERING.COM



RESOLUTION NO CM-6814
 RECORDED FEBRUARY 15 2019
 DOCUMNET NO 2019-0055272
 RECORDED FEBRUARY 15 2019

WATER EASEMENT VACATION

A PORTION OF LOT 8, 9 10, 11 AND 13 OF THE VILLAS OF RENAISSANCE, ACCORDING TO MAP THEREOF NO.13051

DESCRIPTION	BY	APPROVED	DATE	FILMED	CITY OF SAN DIEGO SHEET 1 OF 1	I.O.#	N/A
ORIGINAL		SD	2-15-19				P.T.S.#
					<i>Paul E. Goebel</i> FOR CITY SURVEYOR		1896-6269 CCS 83 COORD
							256-1709 LAMBERT COORD
							40717-B
STATUS							