

VICINITY MAP

NO SCALE

EXHIBIT "B"

BASIS OF BEARINGS

BASIS OF BEARINGS FOR THIS PLAT IS THE SOUTHERLY LINE OF LOT B OF MAP NO. 15923, I.E. N64°45'34"E

LEGEND

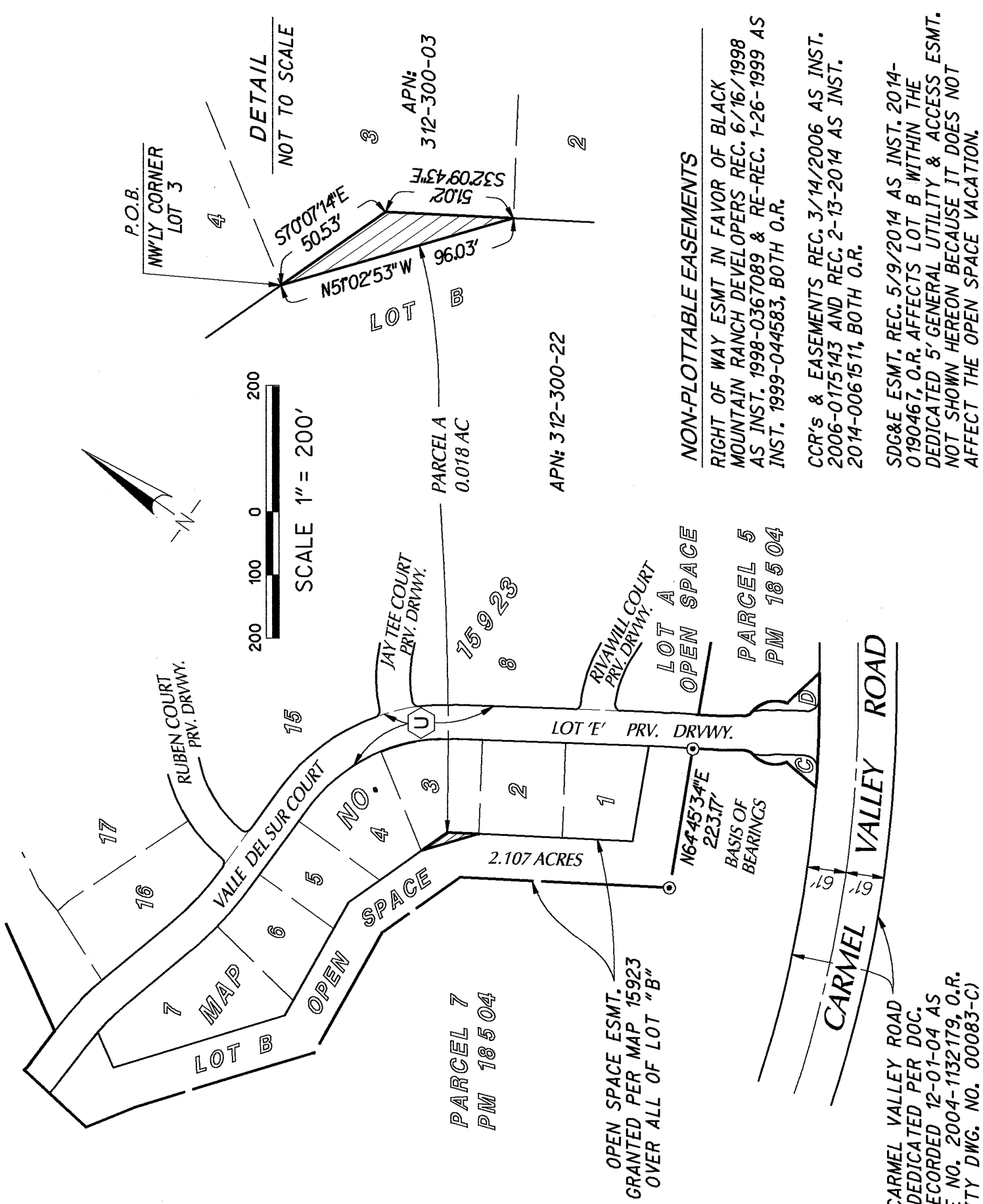
OPEN SPACE EASEMENT VACATED, PARCEL "A" 0.018 ACRES (792.90 SQ. FT.)

P.O.B. INDICATES POINT OF BEGINNING

GENERAL UTILITY & ACCESS EASEMENT GRANTED PER DOC. REC. MARCH 30, 2011 AS INSTR. NO. 2011-0165214, O.R.

REFERENCE DRAWINGS

MAP 15923 AND PM 18504



DETAIL
NOT TO SCALE

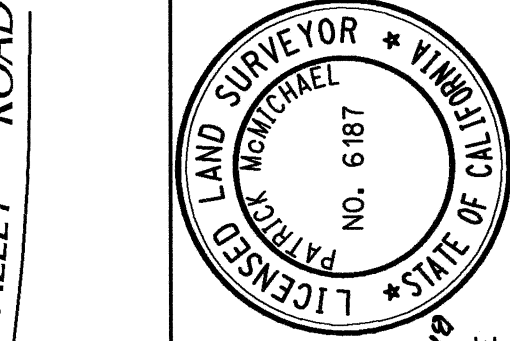
OPEN SPACE ESMT. GRANTED PER MAP 15923 OVER ALL OF LOT "B"

NON-PLOTTABLE EASEMENTS

RIGHT OF WAY ESMT IN FAVOR OF BLACK MOUNTAIN RANCH DEVELOPERS REC. 6/16/1998 AS INST. 1998-0367089 & RE-REC. 1-26-1999 AS INST. 1999-044583, BOTH O.R.

CCR'S & EASEMENTS REC. 3/14/2006 AS INST. 2006-0175143 AND REC. 2-13-2014 AS INST. 2014-0061511, BOTH O.R.

SDG&E ESMT. REC. 5/9/2014 AS INST. 2014-0190467, O.R. AFFECTS LOT B WITHIN THE DEDICATED 5' GENERAL UTILITY & ACCESS ESMT. NOT SHOWN HEREON BECAUSE IT DOES NOT AFFECT THE OPEN SPACE VACATION.



RICK
ENGINEERING COMPANY
5620 FRIARS ROAD
SAN DIEGO, CA 92110
619.291.0707
(FAX) 619.291.4165
J. 14885a

Patrick A. McMichael
PATRICK A. McMICHAE, LS 6187 DATE **5-15-2018**

RESOLUTION No. **R-312071**

RECORDED **DECEMBER 18, 2018**

DOCUMENT No. **2018-0518091**

RECORDED

OPEN SPACE ABANDONED
OVER A PORTION OF LOT B OF MAP NO. 15923,
IN THE CITY OF SAN DIEGO, COUNTY OF SAN DIEGO, STATE OF CALIFORNIA

DESCRIPTION	BY	APPROVED	DATE	FILMED	CITY OF SAN DIEGO, CALIFORNIA	PTS
ORIGINAL	REC				SHEET 1 OF 1 SHEET	594681
						I.O. N/A
						1942-6293
						CCS 83 COORDINATES
						302-1733
						NAD 27 COORDINATES
VACATED						
STATUS						40720-1-B