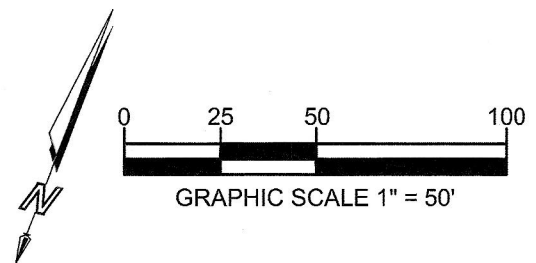
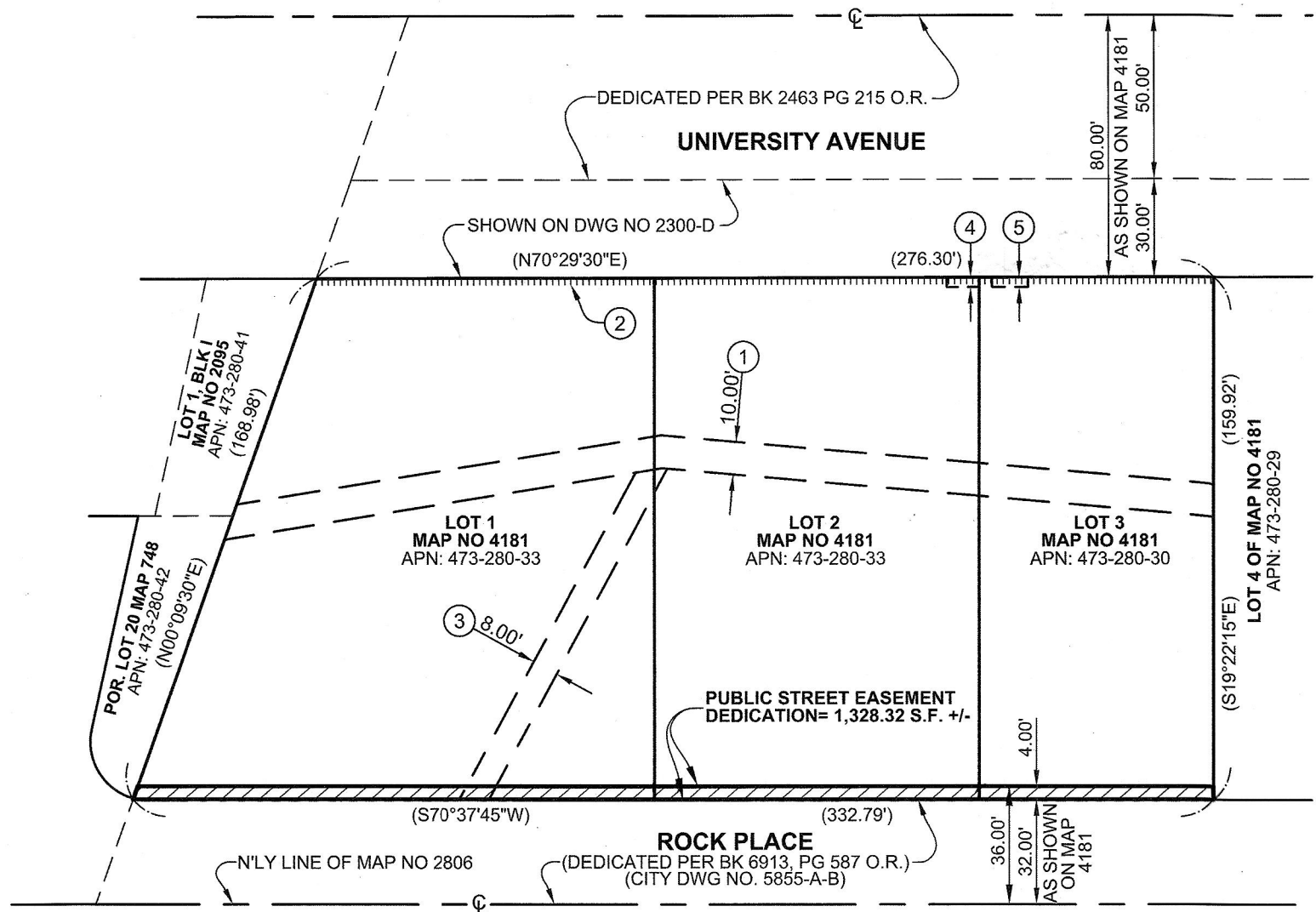





EXHIBIT 'B'



LEGEND

-  PUBLIC STREET EASEMENT ACQUIRED
AREA = 1,328.32 SF +/-
-  EASEMENT LINE
-  BOUNDARY LINE
- () RECORD DATA PER MAP NO. 4181

REFERENCES

CITY OF SAN DIEGO DRAWING 40155-D, 40156-D, 4330-B, 5855-A-B, MAP NO. 4181, APN 473-280-33-00, AND 473-280-30-00.

BASIS OF BEARINGS

THE BASIS OF BEARINGS FOR THIS PROJECT IS THE NORTHERLY RIGHT OF WAY LINE OF ROCK PLACE AS SHOWN IN THE MAP NO. 4181, A BEARING OF NORTH 70°37'45 EAST.

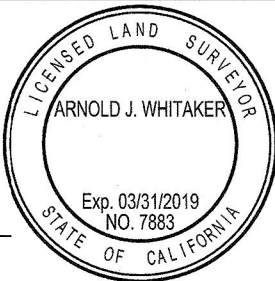
EASEMENTS OF RECORD

- ① 10 FOOT WIDE SEWER EASEMENT IN FAVOR OF SAN DIEGO COUNTY, RECORDED 08/14/1928 IN BK 1521, PG 35 OF DEEDS, AND SHOWN ON ROCK PLACE MAP NO. 4181.
- ② RELINQUISHMENT OF INGRESS/EGRESS RIGHTS BY DOCUMENT RECORDED 01/20/1958 IN BK 6913, PG 590, O.R. AND SHOWN ON MAP NO. 4181 AND IN DOCUMENT RECORDED 06/26/1958. IN BK 7139, PG 562, O.R. AND SHOWN ON ROCK PLACE MAP NO. 4181.
- ③ 8 FOOT WIDE SEWER EASEMENT PER DWG NO. 4330-B AND SHOWN ON ROCK PLACE MAP NO. 4181.
- ④ 3 FOOT WIDE PUBLIC UTILITIES EASEMENT IN FAVOR OF SAN DIEGO GAS & ELECTRIC COMPANY, RECORDED 03/16/1999, FILE NO. 99-0167520, O.R.
- ⑤ 3 FOOT WIDE PUBLIC UTILITIES EASEMENT IN FAVOR OF SAN DIEGO GAS & ELECTRIC COMPANY, RECORDED 03/16/1999, FILE NO. 99-0167521, O.R.



ATLAS CIVIL DESIGN
2191 EL CAMINO REAL, SUITE 208K
OCEANSIDE, CA 92054 (888) 364-1973

Arnold J. Whitaker
ARNOLD J. WHITAKER P.L.S. 7883 08/10/2018 DATE



DOCUMENT No. 2019-0010266

RECORDED 1/10/19

PUBLIC STREET EASEMENT
PORTION OF LOTS 1, 2 AND 3 OF ROCK PLACE MAP NO. 4181

DESCRIPTION	BY	APPROVED	DATE	FILMED	CITY OF SAN DIEGO, CALIFORNIA	PTS <u>609987</u>
ORIGINAL	JAA	FRL	1/9/19	1/10/19	SHEET 1 OF 1 SHEET	I.O. <u>N/A</u>
					<i>Arnold J. Whitaker</i> FOR CITY LAND SURVEYOR	<u>1852-6310</u> CCS83 COORDINATES
					DATE <u>1/9/19</u>	<u>212-1749</u> LAMBERT COORDINATES
COMPLETE						40825-1-B