

EXHIBIT B

STREET DEDICATION PER DOCUMENT RECORDED
6-25-1975 AS F/P#75-161523, BK. 1975, O.R. AS
SHOWN PER MAP NO. 8332

LA JOLLA VILLAGE DRIVE

STREET DEDICATION PER
DOCUMENTS RECORDED
6-25-1975 AS F/P#75-161522,
BK. 1975, O.R., AND REC.
12-29-1975 AS F/P#75-367428,
BK. 1975, O.R. AS SHOWN PER
MAP NO. 8332

LINE DATA TABLE					
	BEARING	LENGTH		BEARING	LENGTH
L1	N00° 02' 46"W	10.00'	L6	N89° 57' 14"E	25.00'
L2	N89° 57' 14"E	15.00'	L7	S89° 57' 14"W	25.00'
L3	N00° 02' 46"W	10.00'	L8	S89° 57' 14"W	24.00'
L4	S89° 57' 14"W	39.00'	L9	S00° 02' 46"E	3.44'
L5	N89° 57' 14"E	31.44'	L10	N00° 02' 46"W	27.42'

LEGEND

INDICATES GENERAL UTILITY AND ACCESS EASEMENT PER DOCUMENT RECORDED 2007-0422387 VACATED HEREON. 23435 SQFT, 0.538 ACRES

P.O.B. POINT OF BEGINNING
T.P.O.B. TRUE POINT OF BEGINNING
(1) RECORD PER MAP 6481

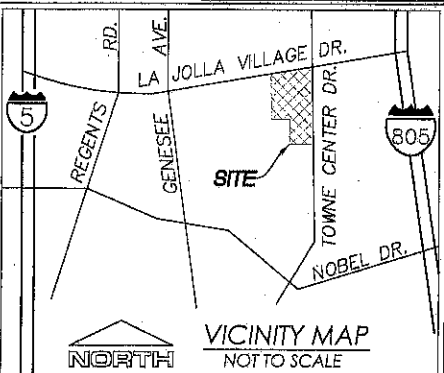
P.O.B.
 R/W
 P

T.P.O.B. PER DOC.
#2007-0422387, O.R.



NORTH
SCALE: 1" = 100'

GRAPHIC SCALE IN FEET
0 50 100 200



NOTES:

- SEE SHEETS 2 & 3 FOR EXISTING EASEMENTS DETAIL.
- ALL BEARING AND DISTANCES SHOWN ARE PER DWG. NO. 20667-B UNLESS OTHERWISE NOTED

PARCEL 1
PM NO. 6481
APN: 345-090-18

GENERAL UTILITY AND ACCESS
EASEMENT PER DOCUMENT
RECORDED JUNE 22, 2007 AS
DOCUMENT NO. 2007-0422387

PARCEL 2
PM NO. 6481
APN: 345-090-16

BASIS OF BEARING

THE BASIS OF BEARING FOR THIS PLAT IS THE WESTERLY BOUNDARY LINE OF PARCEL 1 OF PARCEL MAP NO. 6481 BEING NORTH 282.20'

REFERENCE DRAWINGS

MAP NO. 8332
PARCEL MAP NO. 6481
DWG. NO. 20667-B

195081001 - SERRITAGE UTC

Kimley»Horn

401 B STREET, SUITE 600, SAN DIEGO, CA 92101
PHONE: 619-234-9411
WWW.KIMLEY-HORN.COM

MICHAEL J. KNAPTON
P.L.S. 8012

5/21/19
DATE

DOCUMENT NO. 2019-0199360

RECORDED: MAY 24 2019

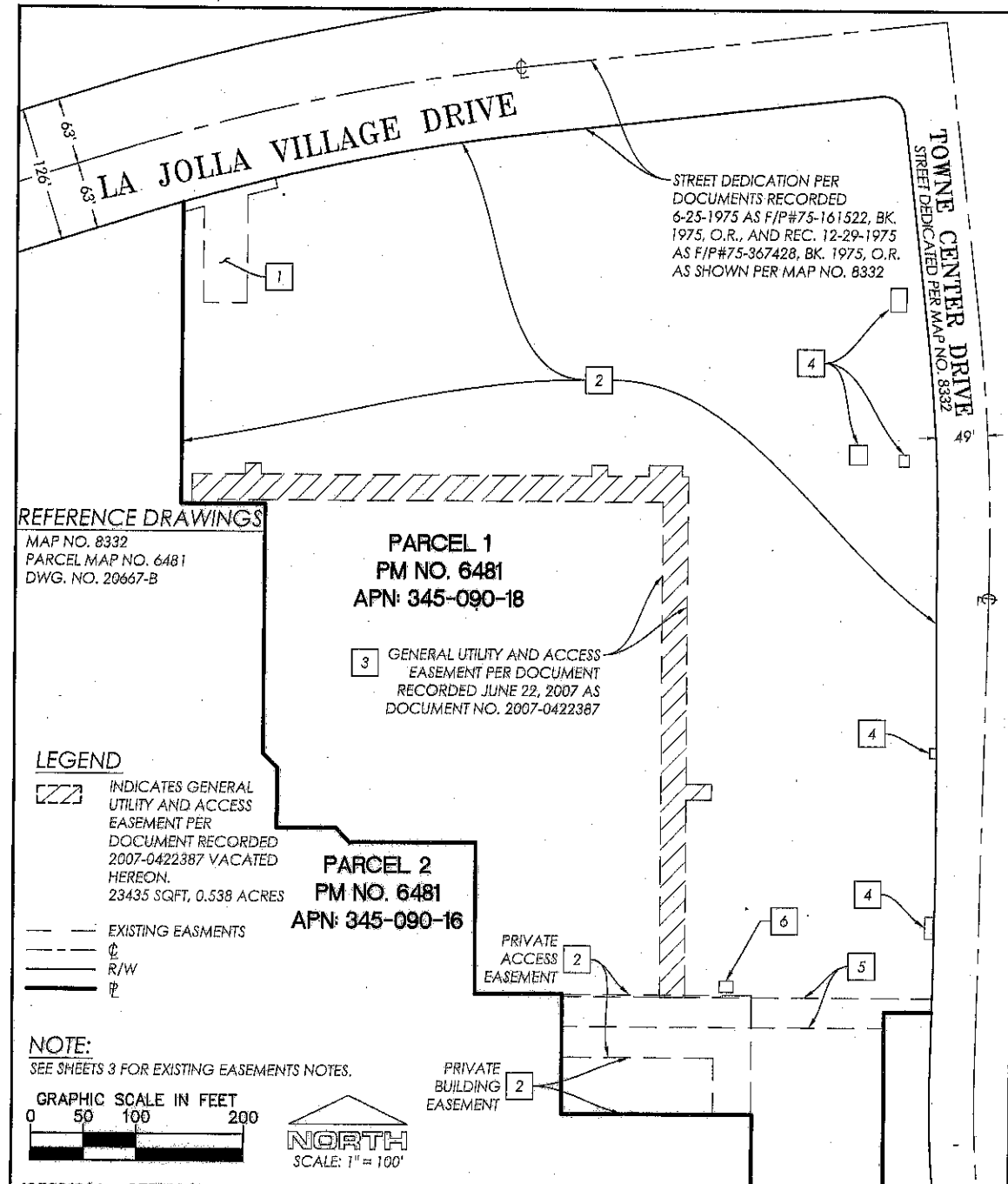
RESOLUTION NO. CM-6241

RECORDED: MAY 24 2019

VACATION OF GENERAL UTILITY AND ACCESS EASEMENT PER DOCUMENT RECORDED JUNE, 22 2007 AS DOC. NO. 2007-0422387 IN A PORTION OF PARCEL 1 OF PARCEL MAP NO. 6481

DESCRIPTION	BY	APPRVD	DATE	FILMED	CITY OF SAN DIEGO, CALIFORNIA	P.T.S. 593701
		ED	5-24-19		SHEET 1 OF 3 SHEETS	
					<i>J. L. A. #17</i>	1896-6265
					FOR CITY LAND SURVEYOR	NAD 83 COORDINATES
					DATE	258-1705
						LAMBERT COORDINATES
						40866-1-B
STATUS						

EXHIBIT B



195081001 - SERITAGE UTC

Kimley»Horn
 401 B STREET, SUITE 600, SAN DIEGO, CA 92101
 PHONE: 619-234-9411
 WWW.KIMLEY-HORN.COM

[Signature] 5/6/19 DATE
 MICHAEL J. KNAPTON
 P.L.S. 8012

**VACATION OF GENERAL UTILITY AND ACCESS EASEMENT
 PER DOCUMENT RECORDED JUNE, 22 2007 AS DOC. NO. 2007-0422387
 IN A PORTION OF PARCEL 1 OF PARCEL MAP NO. 6481**

DESCRIPTION	BY	APPR'VD	DATE	FILMED	CITY OF SAN DIEGO, CALIFORNIA	P.T.S.
		SD	5-21-19		SHEET 2 OF 3 SHEETS	593701
					<i>[Signature]</i> FOR CITY LAND SURVEYOR	1896-6285
					5/23/19 DATE	NAD 83 COORDINATES
						256-1705
						LAMBERT COORDINATES
						40866-2-B
STATUS						

EXHIBIT B

EXISTING EASEMENT NOTES

1. AN EASEMENT SHOWN OR DEDICATED ON THE MAP FILED OR RECORDED JULY 09, 1976 AS MAP NO. 8332 OF TRACT MAP. FOR: ELECTRICAL, GENERAL UTILITY AND INCIDENTAL PURPOSES.
AFFECTS: SUBJECT PROPERTY; PLOTTED HEREON.

2. THE TERMS, PROVISIONS AND EASEMENT(S) CONTAINED IN THE DOCUMENT ENTITLED "CONSTRUCTION, OPERATION AND RECIPROCAL EASEMENT AGREEMENT" RECORDED JUNE 30, 1977 AS INSTRUMENT NO. 77-261404 OF OFFICIAL RECORDS.

DOCUMENT RE-RECORDED AUGUST 24, 1977 AS INSTRUMENT NO. 77-347538 OF OFFICIAL RECORDS.

THE TERMS AND PROVISIONS CONTAINED IN THE DOCUMENT ENTITLED "ASSIGNMENT" RECORDED JANUARY 05, 1978 AS INSTRUMENT NO. 78-003513 OF OFFICIAL RECORDS.

THE TERMS AND PROVISIONS CONTAINED IN THE DOCUMENT ENTITLED "EASEMENT AGREEMENT" RECORDED JULY 13, 1983 AS INSTRUMENT NO. 83-238380 OF OFFICIAL RECORDS.
AFFECTS: SUBJECT PROPERTY; PLOTTED HEREON.

DOCUMENT(S) DECLARING MODIFICATIONS THEREOF RECORDED SEPTEMBER 20, 1983 AS INSTRUMENT NO. 83- 335870 OF OFFICIAL RECORDS.

3. AN EASEMENT FOR GENERAL UTILITIES, ACCESS EASEMENT AND INCIDENTAL PURPOSES, RECORDED JUNE 22, 2007 AS INSTRUMENT NO. 2007-0422387 OF OFFICIAL RECORDS.
IN FAVOR OF: CITY OF SAN DIEGO, A MUNICIPAL CORPORATION AFFECTS: SUBJECT PROPERTY; PLOTTED HEREON.

4. AN EASEMENT AND RIGHT OF WAY FOR UNDERGROUND ELECTRIC FACILITIES, AND APPURTENANCES FOR THE TRANSMISSION AND DISTRIBUTION OF ELECTRICITY, UNDERGROUND COMMUNICATION FACILITIES, AND APPURTENANCES, TOGETHER WITH THE RIGHT OF INGRESS THERETO AND EGRESS THEREFROM AND INCIDENTAL PURPOSES, RECORDED AUGUST 17, 2007 AS INSTRUMENT NO. 2007-0550063 OF OFFICIAL RECORDS.
IN FAVOR OF: SAN DIEGO GAS & ELECTRIC COMPANY, A CORPORATION
AFFECTS: SUBJECT PROPERTY; PLOTTED HEREON.

5. AN EASEMENT FOR GENERAL UTILITY AND INCIDENTAL PURPOSES, RECORDED MAY 02, 1977 AS INSTRUMENT NO. 77-164518 OF OFFICIAL RECORDS.
IN FAVOR OF: CITY OF SAN DIEGO
AFFECTS: AS DESCRIBED THEREIN

6. AN EASEMENT FOR UTILITY FACILITIES AND INCIDENTAL PURPOSES, RECORDED APRIL 26, 2013 AS INSTRUMENT NO. 2013-0262557 OF OFFICIAL RECORDS.
IN FAVOR OF: SAN DIEGO GAS & ELECTRIC COMPANY, A CORPORATION
AFFECTS: SUBJECT PROPERTY; PLOTTED HEREON.

7. AN EASEMENT FOR EXCAVATE, INSTALL, PLACE, LAY, CONSTRUCT, RECONSTRUCT, REPLACE, REPAIR, MAINTAIN AND USE AT ANY TIME AND FROM TIME TO TIME UNDERGROUND CONDUITS, VAULTS, MANHOLES AND JUNCTION BOXES WITH WIRES AND CABLES PLACED THEREIN, AND NECESSARY ABOVE GROUND STRUCTURES, TOGETHER WITH THEIR NECESSARY FIXTURES AND APPURTENANCES, FOR THE TRANSMISSION AND DISTRIBUTION OF ELECTRICITY AND FOR ALL OTHER PURPOSES CONNECTED THEREWITH, AND ALSO FOR PIPELINE(S) FOR THE TRANSMISSION AND DISTRIBUTION OF GAS, TOGETHER WITH THE RIGHT OF INGRESS THERETO AND EGRESS THEREFROM AND INCIDENTAL PURPOSES, RECORDED FEBRUARY 01, 1977 AS INSTRUMENT NO. 77-038919 OF OFFICIAL RECORDS.
IN FAVOR OF: SAN DIEGO GAS AND ELECTRIC COMPANY, A CORPORATION
AFFECTS: SUBJECT PROPERTY; NOT OF A PLOTTABLE NATURE.

195081001 - SERITAGE UTC

Kimley»Horn

401 B STREET, SUITE 600, SAN DIEGO, CA 92101
PHONE: 619-234-9411
WWW.KIMLEY-HORN.COM

[Signature] 5/6/19
MICHAEL J. KNAFTON DATE
P.L.S. 8012

**VACATION OF GENERAL UTILITY AND ACCESS EASEMENT
PER DOCUMENT RECORDED JUNE, 22 2007 AS DOC. NO. 2007-0422387
IN A PORTION OF PARCEL 1 OF PARCEL MAP NO. 6481**

DESCRIPTION	BY	APPR'VD	DATE	FILMED	CITY OF SAN DIEGO, CALIFORNIA SHEET 3 OF 3 SHEETS	P.T.S. 593701
		50	5/22/19		<i>[Signature]</i> FOR CITY LAND SURVEYOR	1896-8265 NAD 83 COORDINATES
					5/22/19 DATE	256-1705 LAMBERT COORDINATES
						40866- 3 -B
STATUS						