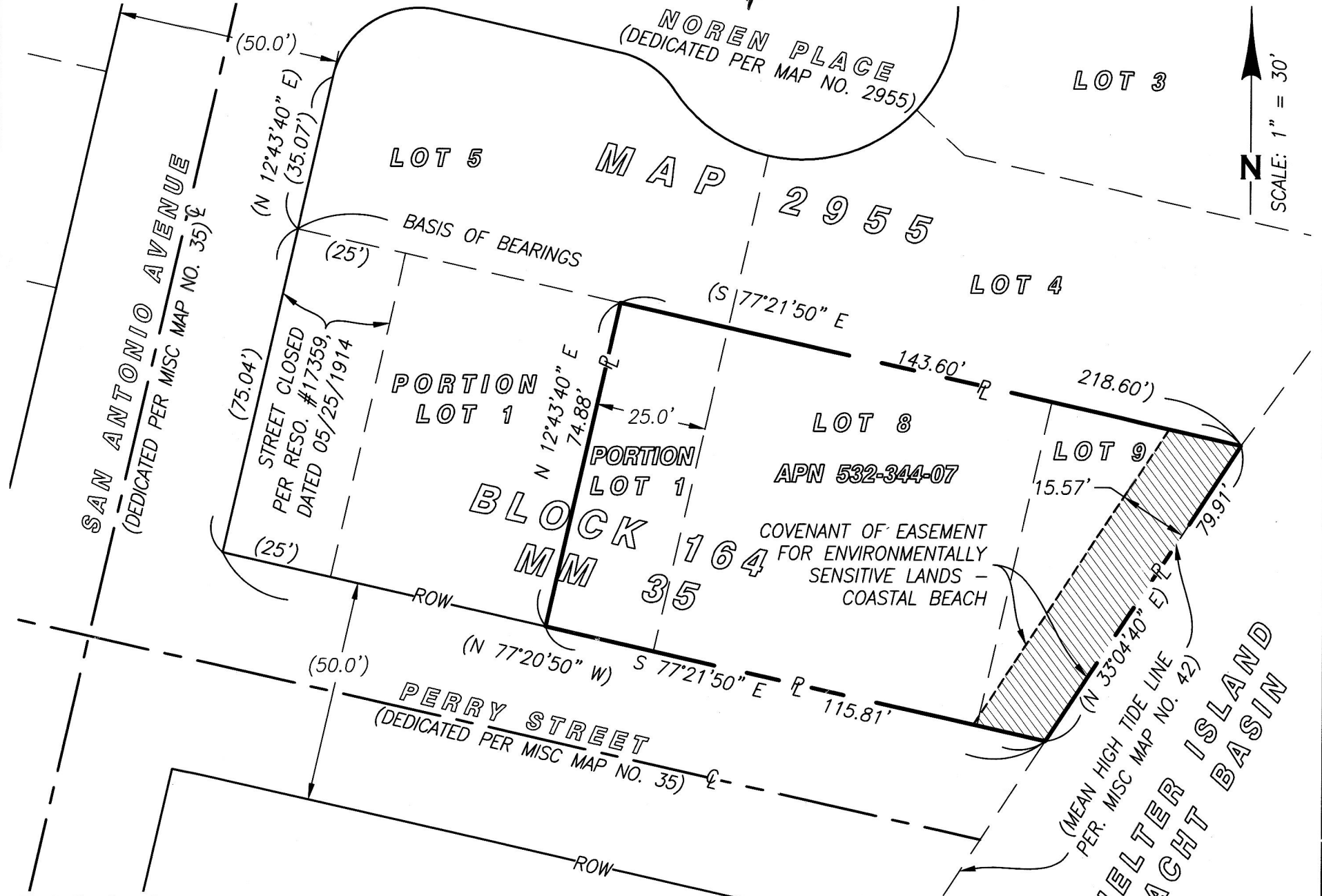


EXHIBIT "B"

NOREN PLACE
(DEDICATED PER MAP NO. 2955)

MAP 2955



SCALE: 1" = 30'

BASIS OF BEARINGS:

THE NORTHERLY LINE LOTS 1, 8, AND 9 OF BLOCK 164, MM 35
AND AS SHOWN ON MAP NO. 2955
I.E. S 77°21'50" E.

LEGEND

- INDICATES COVENANT OF EASEMENT, ACQUIRED 1,145 SQ. FT. (0.026 AC) MORE OR LESS
- EASEMENT BOUNDARY
- P — PROPERTY LINE
- C — CENTERLINE
- ROW — RIGHT-OF-WAY (ROW) LINE
- LOT LINE
- () INDICATES RECORD DATA PER MAP NO. 2955



VICINITY MAP
THOMAS BROS. MAP 1288-B3
NO SCALE



REFERENCE DRAWINGS/DOCUMENTS:
MISC MAP NO. 35
MAP NO. 2955
APN 532-344-07-00
40881-D

(Signature)
JOHN S. COFFEY LS 8733 1-28-19
CE COFFEY ENGINEERING, INC.

DOCUMENT NO. 1219-0092124
RECORDED 3/14/2019

COVENANT OF EASEMENT - PORTION OF LOTS 8 & 9 OF THE PUEBLO LANDS OF BLOCK 164 OF MISC. MAP NO. 35

DESCRIPTION	BY	APPROVED	DATE	FILED	CITY OF SAN DIEGO, CALIFORNIA	P.T.S.#
ORIGINAL	CE			3-14-19	SHEET 1 OF 1 SHEETS	612165
					<i>(Signature)</i> FOR CITY LAND SURVEYOR	1840-6255
					DATE	CCS 83
						200-1695
						LAMBERT COORDINATES
ACQUIRED						40882-B

STATUS