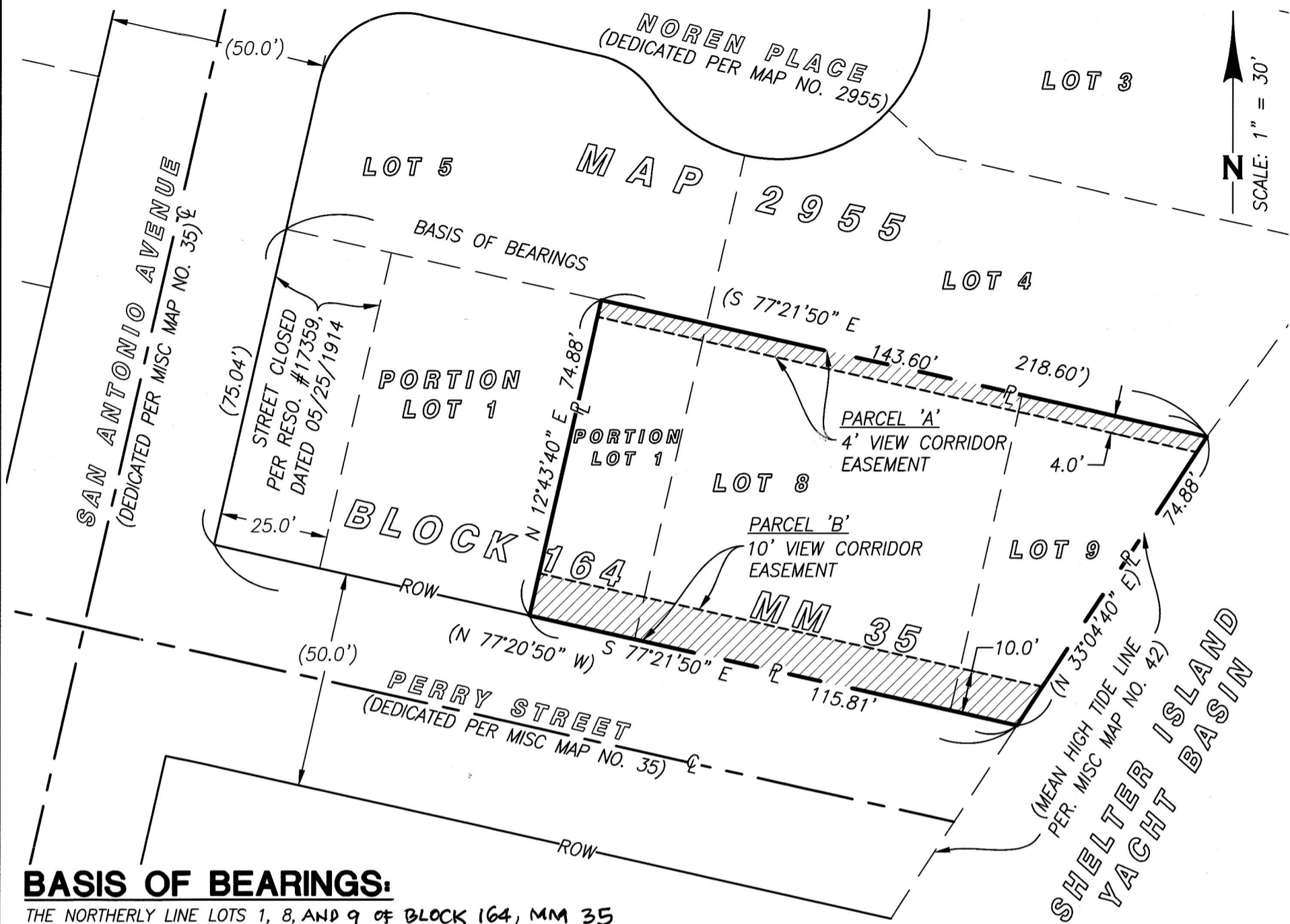


EXHIBIT 'B'

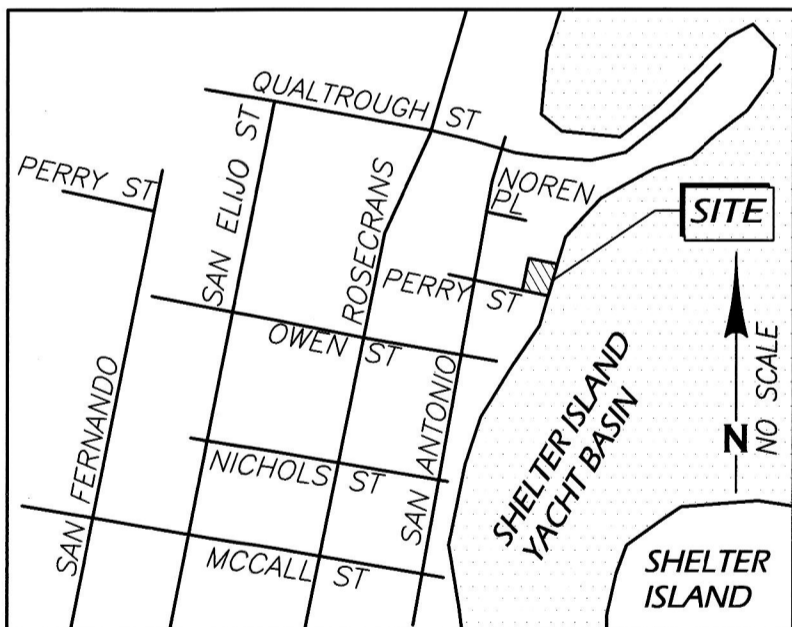


BASIS OF BEARINGS:

THE NORTHERLY LINE LOTS 1, 8, AND 9 OF BLOCK 164, MM 35
 AS SHOWN ON MAP NO. 2955
 I.E. S 77°21'50" E.

LEGEND

- INDICATES ACQUIRED VIEW CORRIDOR EASEMENTS
 PARCEL A: 57.1 SQ. FT. (0.013 AC) MORE OR LESS
 PARCEL B: 1,177 SQ. FT. (0.027 AC) MORE OR LESS
- EASEMENT BOUNDARY
- PROPERTY LINE
- CENTERLINE
- RIGHT-OF-WAY (ROW) LINE
- LOT LINE
- INDICATES RECORD DATA PER MAP NO. 2955



VICINITY MAP

THOMAS BROS. MAP 1288-B3
 NO SCALE



REFERENCE DRAWINGS/DOCUMENTS:

MISC MAP NO. 35
 MAP NO. 2955
 APN 532-344-07-00
 40881-D

[Signature]
 JOHN S. COFFEY LS 8733
CE COFFEY ENGINEERING, INC.

DOCUMENT NO. 209-009211

RECORDED 3/14/2019

VIEW CORRIDOR EASEMENT DEDICATION - PORTIONS OF LOTS 1, 8, & 9 OF THE PUEBLO LANDS IN BLOCK 164 OF MISC. MAP NO. 35

DESCRIPTION	BY	APPROVED	DATE	FILED	CITY OF SAN DIEGO, CALIFORNIA	P.T.S.#
ORIGINAL	CE			3-14-19	SHEET 1 OF 1 SHEETS	612165
					<i>[Signature]</i> FOR CITY LAND SURVEYOR	1840-6255
					DATE	CCS 83
						200-1695
						LAMBERT COORDINATES
ACQUIRED				STATUS		40883-B