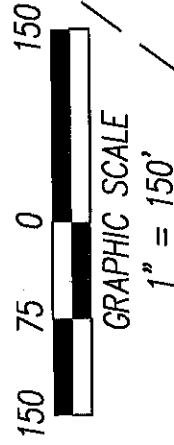


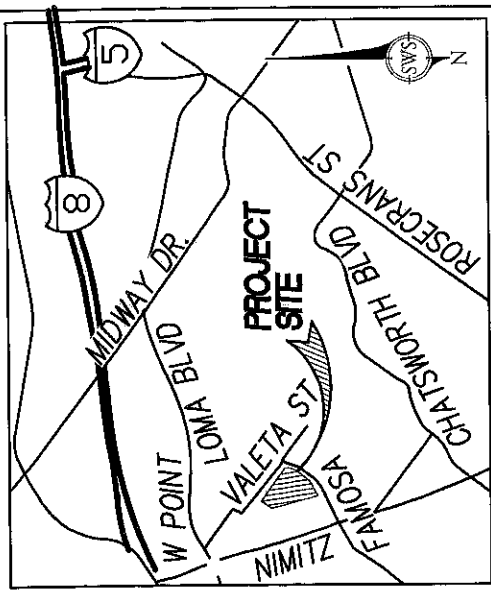
REFERENCES

MAP NO. 1078 & 1082
 ROS 9690 & 18351, MISC.
 MAP 36

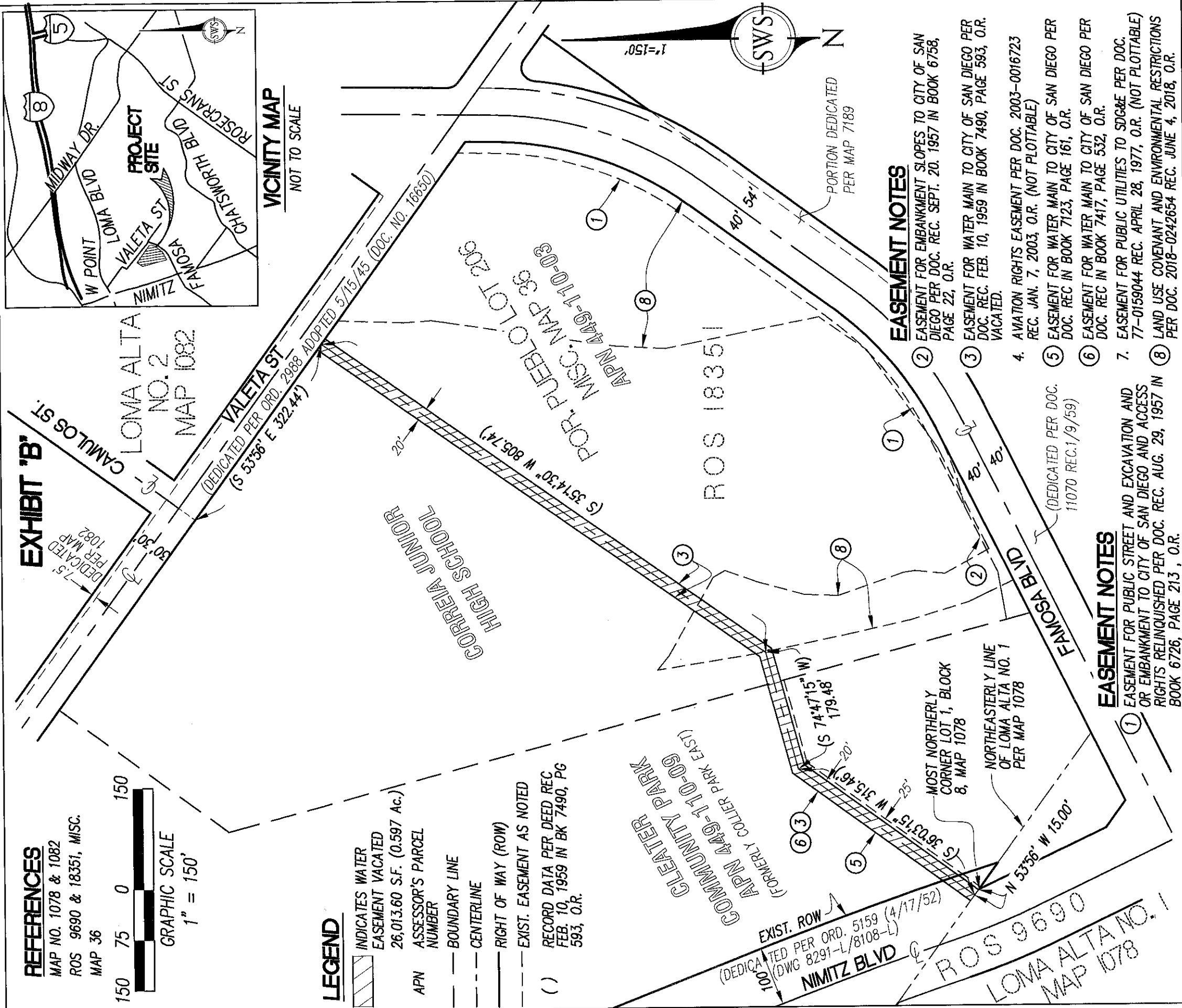


LEGEND

- INDICATES WATER EASEMENT VACATED 26,013.60 S.F. (0.597 Ac.)
- APN ASSESSOR'S PARCEL NUMBER
- BOUNDARY LINE
- CENTERLINE
- RIGHT OF WAY (ROW)
- EXIST. EASEMENT AS NOTED
- () RECORD DATA PER DEED REC. FEB. 10, 1959 IN BK 7490, PG 593, O.R.



VICINITY MAP
 NOT TO SCALE



EASEMENT NOTES

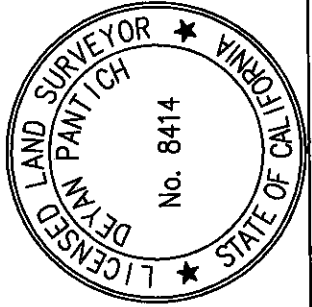
- ① EASEMENT FOR EMBANKMENT SLOPES TO CITY OF SAN DIEGO PER DOC. REC. SEPT. 20, 1957 IN BOOK 6758, PAGE 22, O.R.
- ② EASEMENT FOR WATER MAIN TO CITY OF SAN DIEGO PER DOC. REC. FEB. 10, 1959 IN BOOK 7490, PAGE 593, O.R. VACATED.
- ③ AVIATION RIGHTS EASEMENT PER DOC. 2003-0016723 REC. JAN. 7, 2003, O.R. (NOT PLOTTABLE)
- ④ EASEMENT FOR WATER MAIN TO CITY OF SAN DIEGO PER DOC. REC IN BOOK 7123, PAGE 161, O.R.
- ⑤ EASEMENT FOR WATER MAIN TO CITY OF SAN DIEGO PER DOC. REC IN BOOK 7417, PAGE 532, O.R.
- ⑥ EASEMENT FOR PUBLIC UTILITIES TO SDG&E PER DOC. 77-0159044 REC. APRIL 28, 1977, O.R. (NOT PLOTTABLE)
- ⑦ LAND USE COVENANT AND ENVIRONMENTAL RESTRICTIONS PER DOC. 2018-0242654 REC. JUNE 4, 2018, O.R.

EASEMENT NOTES

- ① EASEMENT FOR PUBLIC STREET AND EXCAVATION AND OR EMBANKMENT TO CITY OF SAN DIEGO AND ACCESS RIGHTS RELINQUISHED PER DOC. REC. AUG. 29, 1957 IN BOOK 6726, PAGE 213, O.R.

SWS ENGINEERING, INC.
 261 AUTUMN DRIVE, SUITE 115
 SAN MARCOS, CA 92069
 (760) 744-0011

Deyan Pantich 9/15/20
 DEYAN PANTICH, PLS DATE



RESOLUTION No. CM-6968
 PASSAGE DATE: JULY 9, 2020
 RECORDED
 DOCUMENT No. 2020-0620306
 RECORDED Oct. 14, 2020

WATER EASEMENT VACATION

PORTION OF LOT 206, PUEBLO LANDS OF SAN DIEGO, PER ~~MAP 1082~~ MM 36

DESCRIPTION	BY	APPROVED DATE	FILMED
ORIGINAL	SWS	5-0	10/29/20

CITY OF SAN DIEGO, CALIFORNIA	PTS 595804
SHEET 1 OF 1 SHEET	I.O. N/A
<i>Frank A. F. Jr</i> FOR CITY LAND SURVEYOR	1850-6257
DATE 10/16/2020	CCS 83 COORDINATES
	210-1697
	NAD 27 COORDINATES
	40893-1-B

COMPLETED STATUS