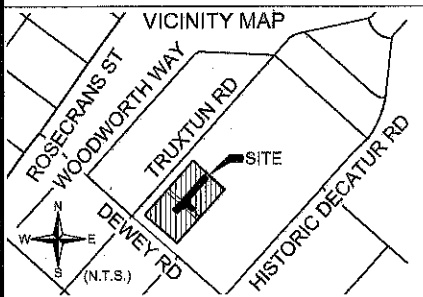
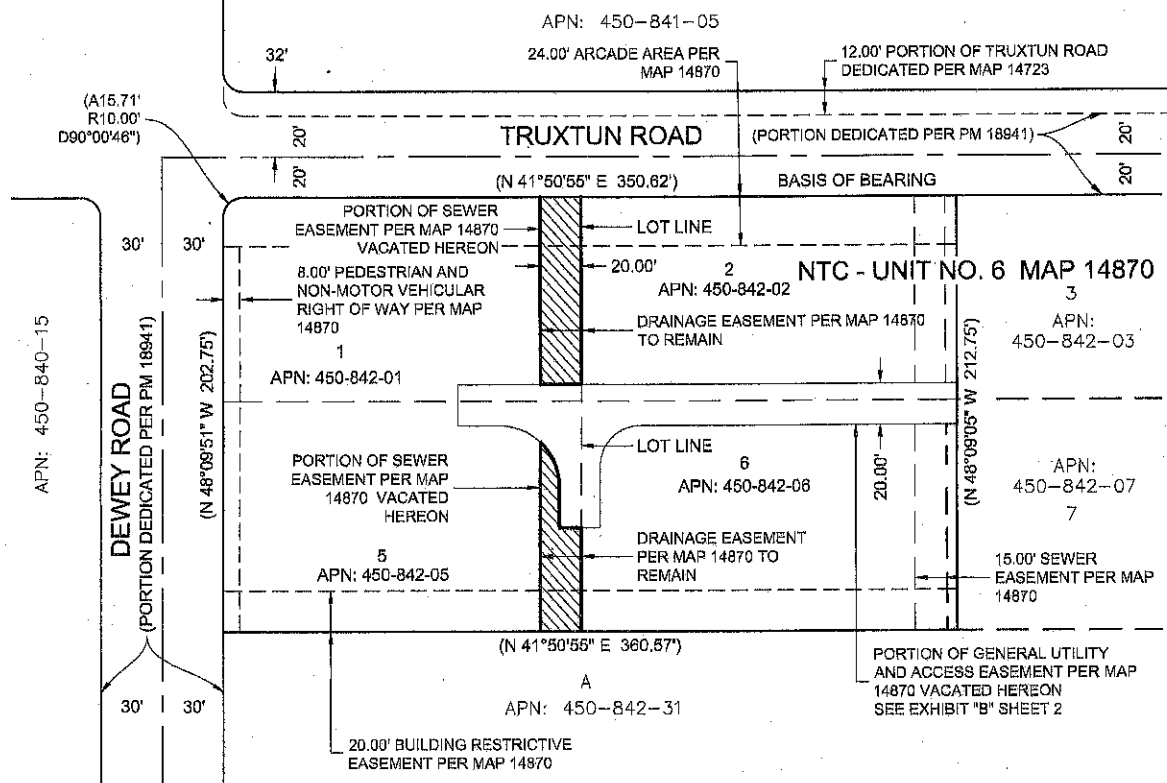
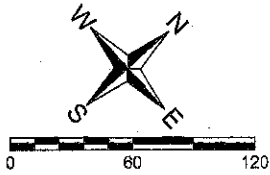


EXHIBIT "B"

PAGE 1 OF 2



REFERENCES

MAP 14870 PM 18941
MAP 14723

APN'S

450-842-01 450-842-02
450-842-05 450-842-06

BASIS OF BEARINGS

NORTHWEST LINE LOTS 1 AND 2 OF MAP 14870.
IE: N 41°50'55" E

LEGEND

- PROPERTY LINE
- RIGHT-OF-WAY LINE
- CENTER LINE
- ADJOINING PROPERTY LINE
- EASEMENT LINE
- TIE / REFERENCE LINE
- RECORD DATA PER MAP 14870
- SEWER EASEMENT VACATED 3,180 SF (0.073) AC

Gary D. Mellom 6-18-19
GARY D. MELLOM PLS 8537

PASCO LARET SUITER
& ASSOCIATES
PH. 858.259.8212 | PLSAENGINEERING.COM



RESOLUTION NO CM-6854
ADOPTED MAY 20, 2019
DOCUMENT NO 2019-0256602
RECORDED JUNE 28, 2019

VACATION OF A PORTION OF THE SEWER, GENERAL UTILITY AND ACCESS EASEMENT A PORTION OF LOT 1, 2, 5 AND 6 MAP 14870

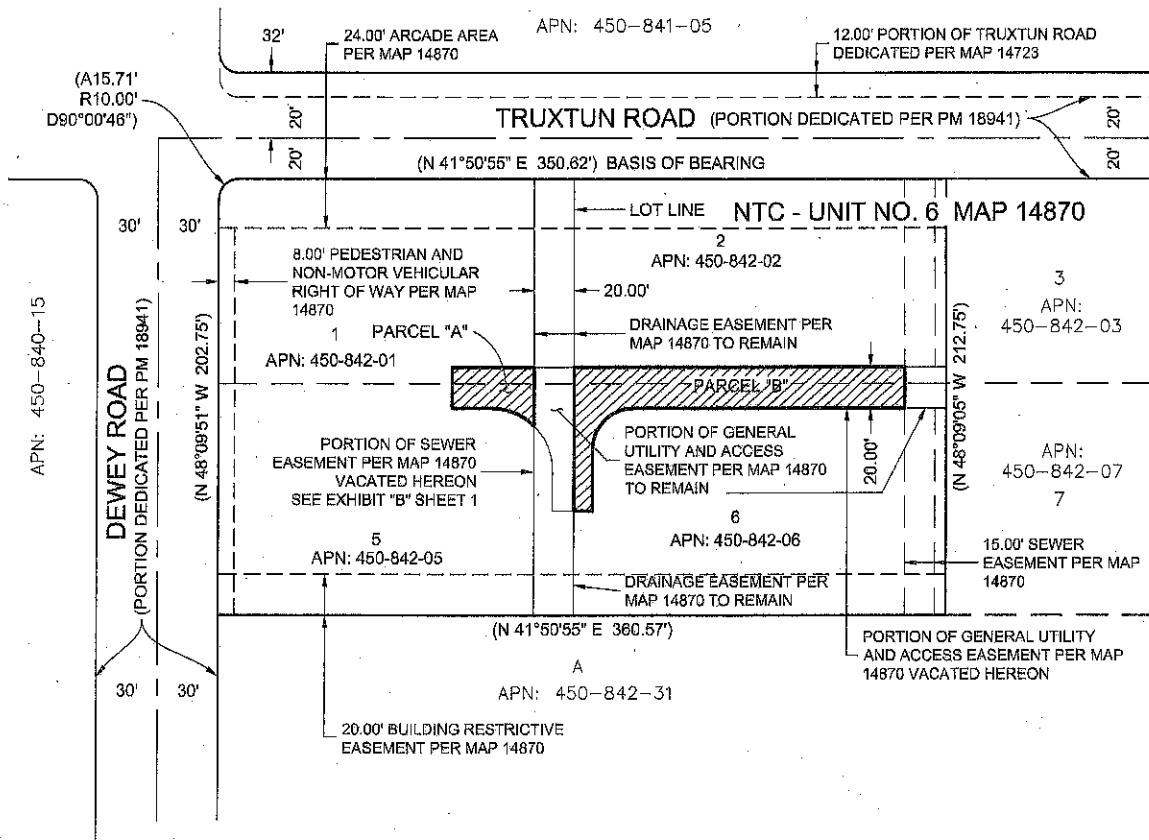
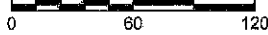
DESCRIPTION	BY	APPROVED	DATE	FILMED	CITY OF SAN DIEGO SHEET 1 OF 2	I.O.# N/A
ORIGINAL		S.O.	7/2/19		<i>Jacob R. Roy</i> FOR CITY SURVEYOR	P.T.S.# 612242
					6/20/19 DATE	1850-6263 CCS 83 COORD
						210-1703 LAMBERT COORD
						40991-B

COMPLETED

STATUS

EXHIBIT "B"

PAGE 2 OF 2



LEGEND



PARCELS "A" AND "B" PORTION OF GENERAL UTILITY AND ACCESS EASEMENT VACATED.
4,705 SF (0.108) AC

VACATION OF A PORTION OF THE SEWER, GENERAL UTILITY AND ACCESS EASEMENT A PORTION OF LOT 1, 2, 5 AND 6 MAP 14870

DESCRIPTION	BY	APPROVED	DATE	FILMED	CITY OF SAN DIEGO SHEET 2 OF 2	I.O.# P.T.S.#
ORIGINAL		S.O.	7/2/19			N/A 612242
					<i>Andrew R. Kelly</i> FOR CITY SURVEYOR	1850-6263 CCS 83 COORD
					6/20/19 DATE	210-1703 LAMBERT COORD
						40991-B
COMPLETED					STATUS	