

A vicinity map showing the project site location. The map includes a north arrow pointing up, a scale indicator (a line with 'NO SCALE' written below it), and a legend for the project site. The project site is marked with a black rectangle and the text 'PROJECT SITE'. The map shows a road network including SR-56, Sundance Avenue, Carmel Mountain Road, and Entrekken Way. The project site is located near the intersection of SR-56 and Sundance Avenue.

LEGEND

- INDICATES SECTION/OWNERSHIP LINE
INDICATES RIGHT-OF-WAY LINE
INDICATES SUBDIVISION BOUNDARY
INDICATES LOT LINE

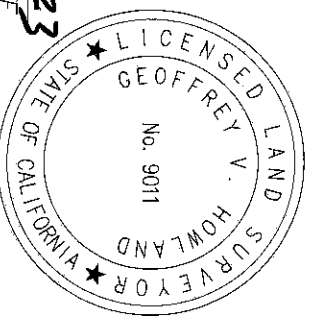
P.O.C.	INDICATES POINT OF COMMENCEMENT
P.O.B.	INDICATES POINT OF BEGINNING
T.P.O.B.	INDICATES TRUE POINT OF BEGINNING
()	INDICATES REC. DATA PER MAP NO. 15578
< >	INDICATES REC. DATA PER MAP NO. 15309
[]	INDICATES REC. DATA PER MAP NO. 16433
{ }	INDICATES REC. DATA PER MAP NO. 16457
(())	INDICATES REC. DATA PER ROS NO. 15686

- EASEMENTS
- (A) ELECTRICAL EASEMENT GRANTED TO THE CITY OF SAN DIEGO PER DOCUMENT NO. 2003-0137735 REC. FEB. 06, 2003, O.R.
- (B) ROAD AND PUBLIC UTILITIES EASEMENT GRANTED TO GLEN R. HENDERSON AND DOROTHY L. HENDERSON PER DOCUMENT NO. 215890 RECORDED OCT. 19, 1959, O.R.
- (C) ROAD AND PUBLIC UTILITIES EASEMENT GRANTED TO JOHN C. BALLINGER AND EVELYN M. BALLINGER PER DOCUMENT NO. 5527 RECORDED JAN. 11, 1957, O.R.
- (D) PUBLIC UTILITIES EASEMENT GRANTED TO SAN DIEGO GAS & ELECTRIC COMPANY PER DOCUMENT NO. 208395 RECORDED OCT. 8, 1959, O.R.
- (E) DRAINAGE EASEMENT GRANTED TO THE CITY OF SAN DIEGO PER MAP NO. 13309

EASEMENTS

- (A) ELECTRICAL EASEMENT GRANTED TO THE CITY OF SAN DIEGO PER DOCUMENT NO. 2003-0137735 REC. FEB. 06, 2003, O.R.
- (B) ROAD AND PUBLIC UTILITIES EASEMENT GRANTED TO GLEN R. HENDERSON AND DOROTHY L. HENDERSON PER DOCUMENT NO. 215890 RECORDED OCT. 19, 1959, O.R.
- (C) ROAD AND PUBLIC UTILITIES EASEMENT GRANTED TO JOHN C. BALLINGER AND EVELYN M. BALLINGER PER DOCUMENT NO. 5527 RECORDED JAN. 11, 1957, O.R.
- (D) PUBLIC UTILITIES EASEMENT GRANTED TO SAN DIEGO GAS & ELECTRIC COMPANY PER DOCUMENT NO. 208395 RECORDED OCT. 8, 1959, O.R.
- (E) DRAINAGE EASEMENT GRANTED TO THE CITY OF SAN DIEGO PER MAP NO. 13309

latitude 33
PLANNING & ENGINEERING
9968 Hibert Street, 2nd Floor, San Diego, CA 92131
Tel 658.751.0633



~~GEOFFREY V. HOWLAND~~ / LS 9011

DATE 4/6/2023

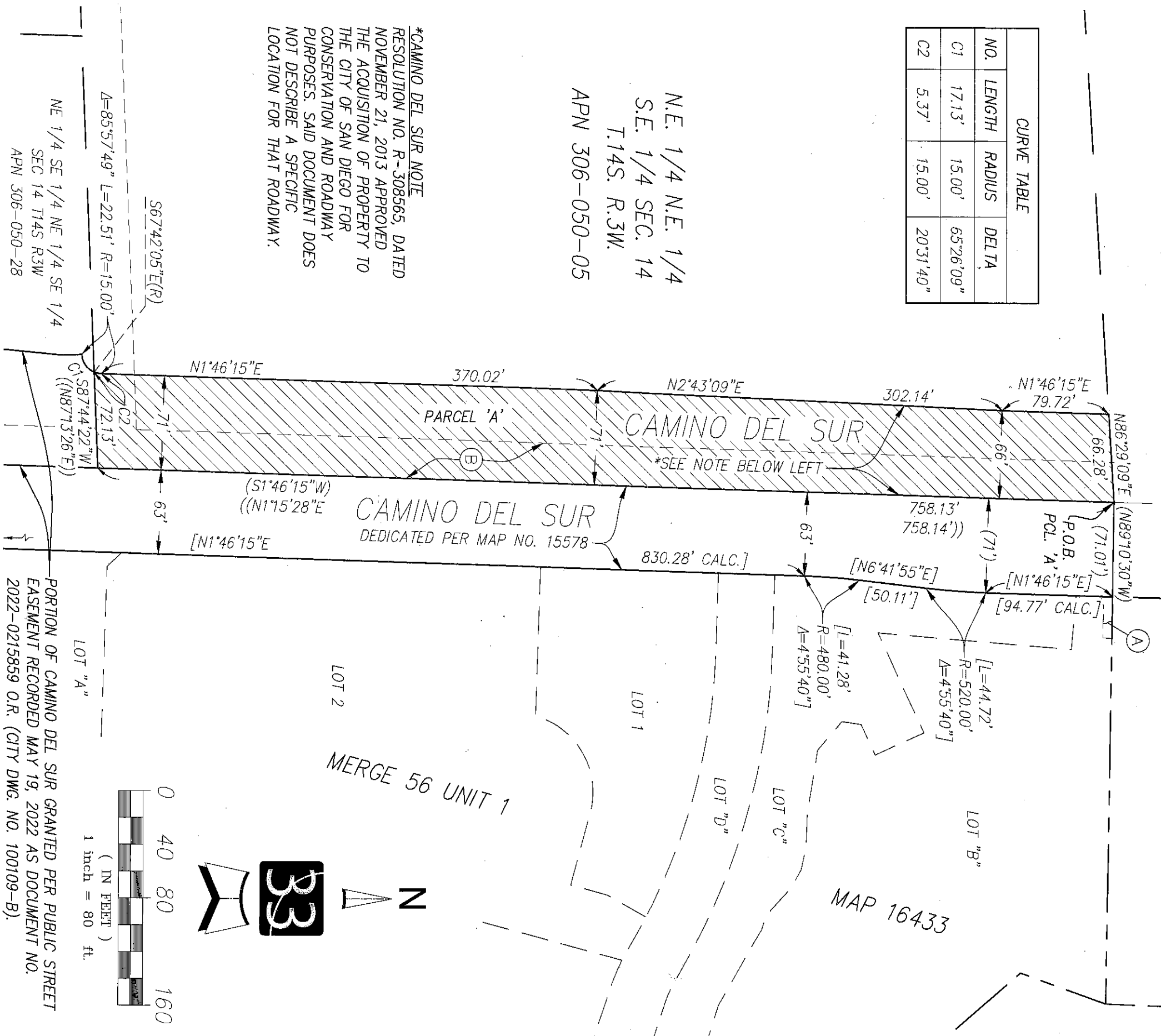
A PORTION OF THE N.E. 1/4 OF N.E. 1/4 OF SECTION 14, T.14S., R.3W., S.B.M. AND
A PORTION OF LOT 37 OF MAP NO. 13309

[illegible]

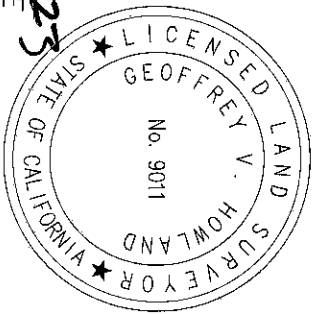
CURVE TABLE		
NO.	LENGTH	RADIUS
C1	17.13'	15.00'
C2	5.37'	15.00'

N.E. 1/4 N.E. 1/4
S.E. 1/4 SEC. 14
T.14S. R.3W.
APN 306-050-05

*CAMINO DEL SUR NOTE
RESOLUTION NO. R-308565, DATED
NOVEMBER 21, 2013 APPROVED
THE ACQUISITION OF PROPERTY TO
THE CITY OF SAN DIEGO FOR
CONSERVATION AND ROADWAY
PURPOSES. SAID DOCUMENT DOES
NOT DESCRIBE A SPECIFIC
LOCATION FOR THAT ROADWAY.



latitude 33
PLANNING & ENGINEERING
9968 Hilbert Street, 2nd Floor, San Diego, CA 92131
Tel 619.751.0633

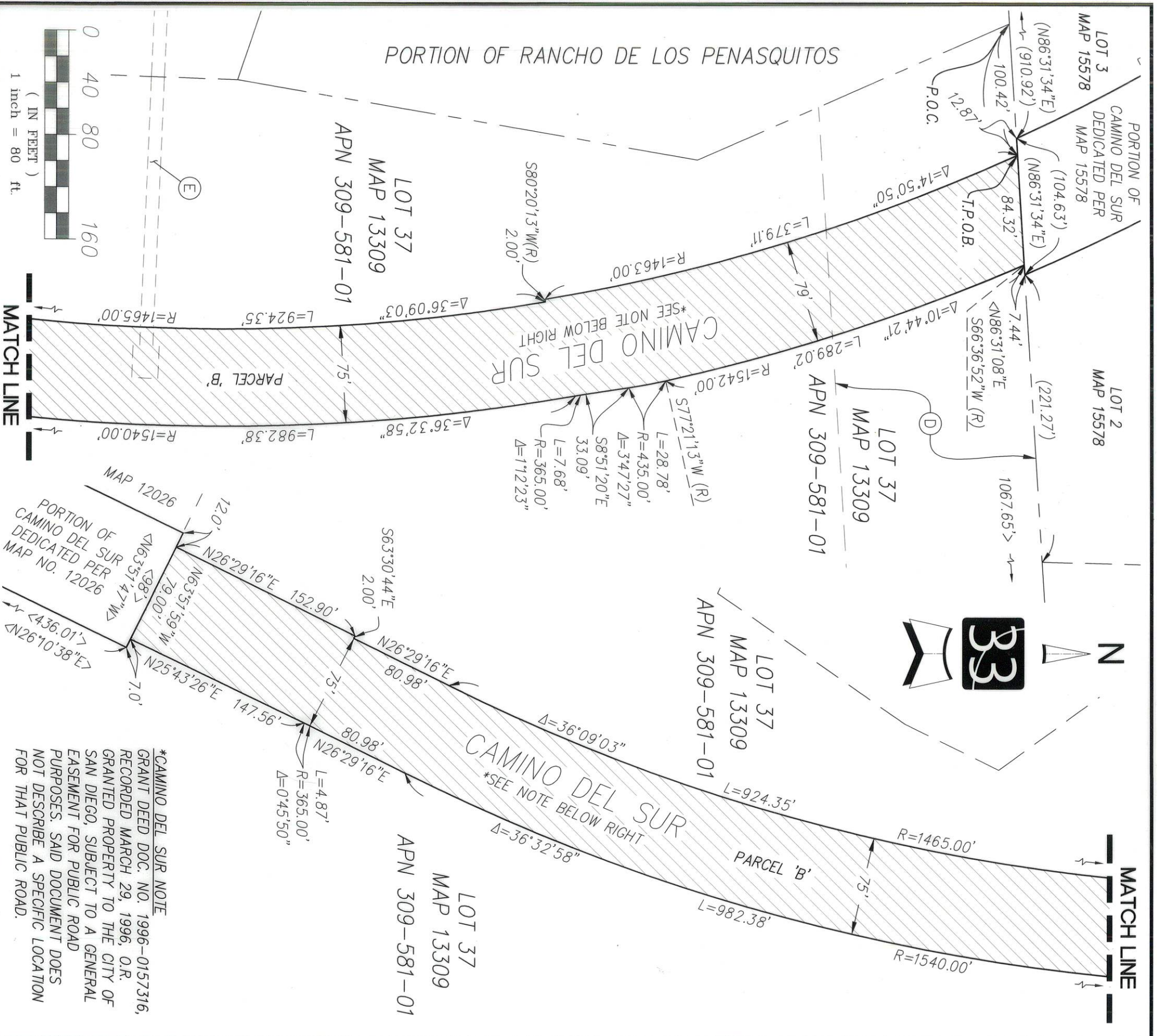


DOCUMENT NO.: _____
RECORDED: _____

PUBLIC STREET EASEMENT

A PORTION OF THE N.E. 1/4 OF N.E. 1/4 OF S.E. 1/4 OF SECTION 14, T.14S., R.3W., S.B.M. AND
A PORTION OF LOT 37 OF MAP NO. 13309

DESCRIPTION	BY	APPROVED	DATE	FILMED
ORIGINAL	LAI33			
CITY OF SAN DIEGO, CALIFORNIA DEVELOPMENT SERVICES DEPARTMENT SHEET 2 OF 3 SHEETS				
FOR CITY LAND SURVEYOR				
DATE				
PTS NO. 614152				
I.O. N/A				
1926-6283				
COS '83 COORDINATES				
286-1723				
LAMBERT COORDINATES				
41006-2-B				



PLANNING & ENGINEERING
9968 Hilbert Street 2nd Floor, San Diego, CA 92131

GEOFFREY V. HOWLAND, LS 9011

DATE _____



DOCUMENT NO.:

RECORDED:

PUBLIC STREET EASEMENT

A PORTION OF THE N.E. 1/4 OF N.E. 1/4 OF S.E. 1/4 OF SECTION 14, T.14S., R.3W., S.B.M. AND

A PORTION OF LOT 37 OF MAP NO. 13309

DESCRIPTION	BY	APPROVED	DATE	FILMED
ORIGINAL	LAT33			

CITY OF SAN DIEGO, CALIFORNIA DEVELOPMENT SERVICES DEPARTMENT SHEET 3 OF 3 SHEETS	
FOR CITY LAND SURVEYOR <u>Paul A. Ky</u>	DATE <u>4/9/2023</u>

PT'S NO.	614152
I.O. NO.	N/A
CCS '83 COORDINATES	1926-6283
LAMBERT COORDINATES	286-1723

STATUS	41006-3-B
--------	-----------