

VICINITY MAP
NOT TO SCALE

LINE LEGEND

- RIGHT OF WAY LINE
- LOT LINE
- EXISTING EASEMENT LINE
- CENTER LINE

PEDESTRIAN ACCESS EASEMENT ACQUIRED
AREA = 1,898 SQ. FT.

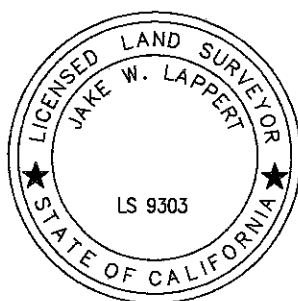
BASIS OF BEARINGS

THE BASIS OF BEARING FOR THIS DRAWING IS A PORTION OF THE CENTERLINE OF WESTVIEW PARKWAY PER MAP NO. 13802 IE N00°25'50"W.

REFERENCES

MIRA MESA MARKETCENTER ACCORDING TO MAP NO. 13802, FILED JUNE 10, 1999 AS FILE NO. 1999-408619 APN 318-600-10 AND 11.

DRC ENGINEERING, INC
160 S. OLD SPRINGS ROAD, SUITE 210
ANAHEIM, CA 92808
714-685-6860



6-25-2019
JAKE W. LAPPERT DATE
LS 9303

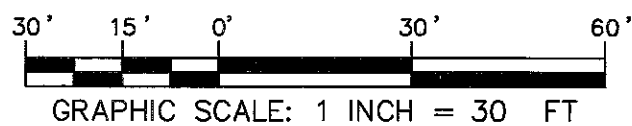
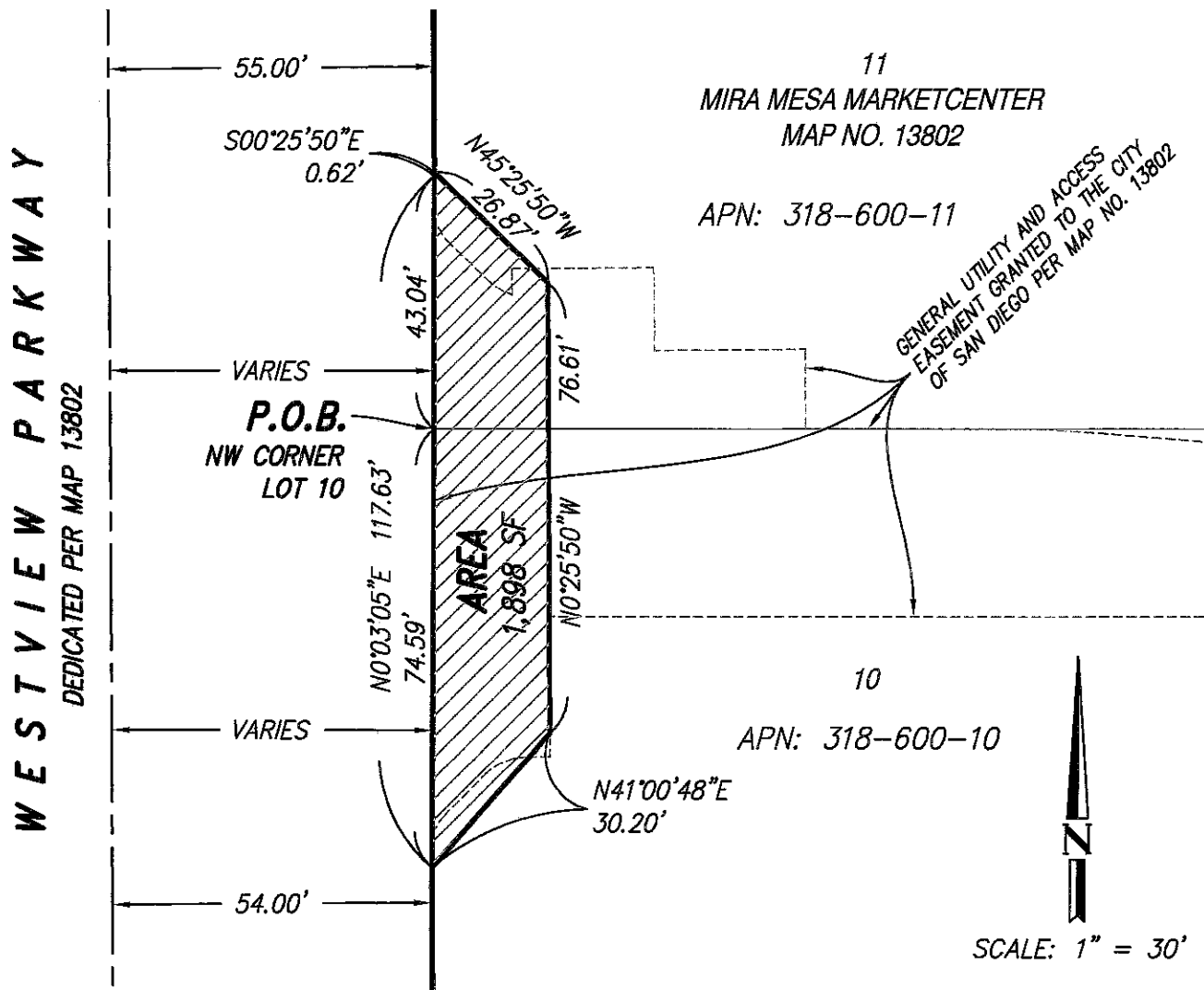
DOCUMENT No. 2019-0256534
RECORDED JUNE 28, 2019

PEDESTRIAN ACCESS EASEMENT

IN A PORTION OF LOTS 10 AND 11 OF MIRA MESA MARKETCENTER ACCORDING TO MAP NO. 13802.

DESCRIPTION	APPROVED	DATE	FILMED	CITY OF SAN DIEGO, CALIFORNIA		PTS
ORIGINAL				SHEET 1 OF 3 SHEETS		619848
						I.O. N/A
					6-27-19	1912-6293
				CITY LAND SURVEYOR	DATE	CCS 83 COORDINATES
						272-1733
						NAD 27 COORDINATES
COMPLETED				STATUS		41037-B

EXHIBIT "B"



DRC ENGINEERING, INC
 160 S. OLD SPRINGS ROAD, SUITE 210
 ANAHEIM, CA 92808
 714-685-6860



Jake W. Lappert
 JAKE W. LAPPERT
 LS 9303
 6-25-2019
 DATE

DOCUMENT No. 2019-0256534
 RECORDED JUNE 28, 2019

PEDESTRIAN ACCESS EASEMENT

IN A PORTION OF LOTS 10 AND 11 OF MIRA MESA MARKETCENTER ACCORDING TO MAP NO. 13802.

DESCRIPTION	APPROVED	DATE	FILMED	CITY OF SAN DIEGO, CALIFORNIA	PTS 619848
ORIGINAL				SHEET 3 OF 3 SHEETS	I.O. N/A
				<i>Gregory</i> FOR CITY LAND SURVEYOR	1912-6293 CCS 83 COORDINATES
				6-27-19 DATE	272-1733 NAD 27 COORDINATES
COMPLETED				STATUS	41037-B