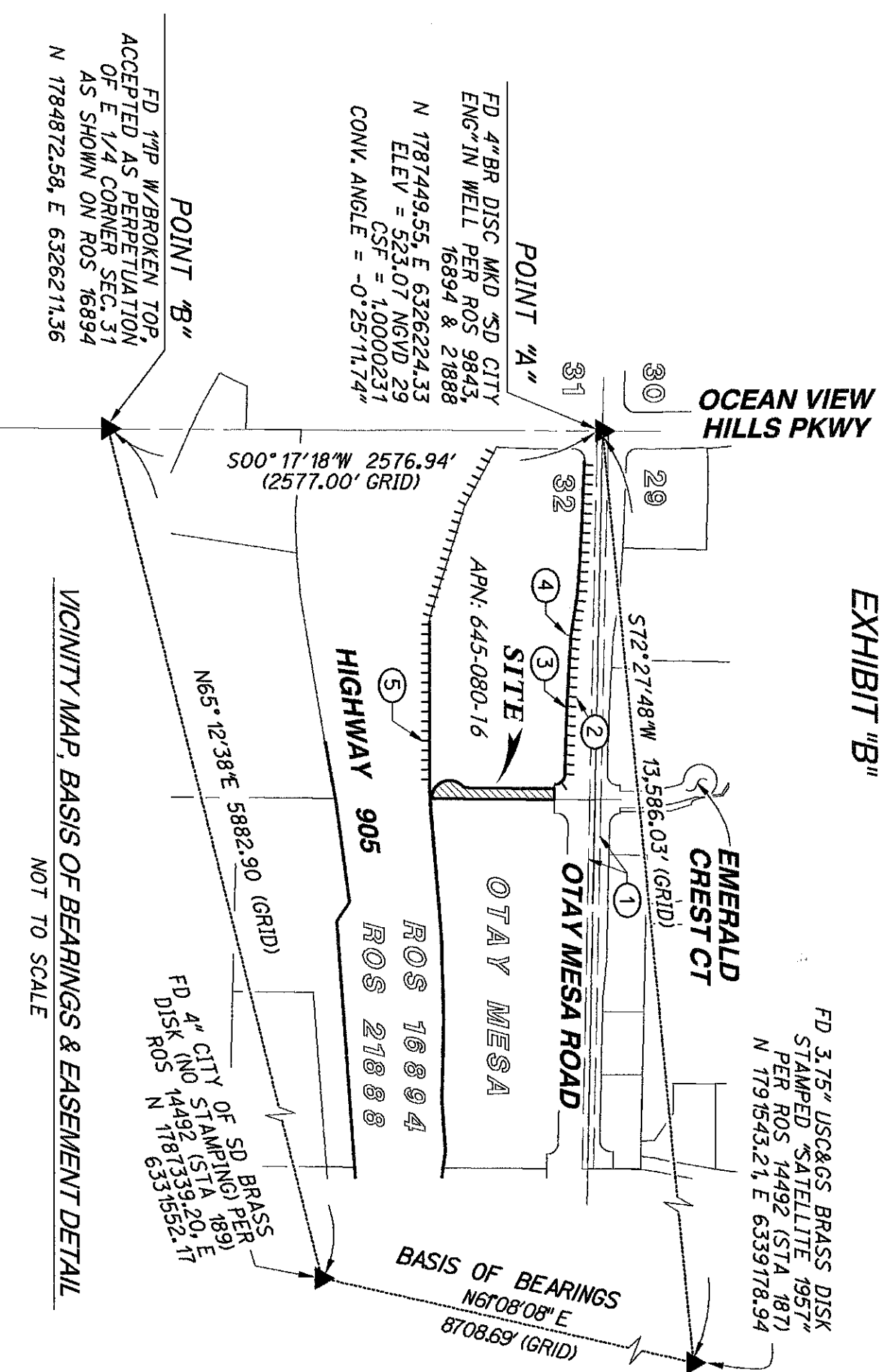


EXHIBIT "B"



FD 3.75" USC&GS BRASS DISK
STAMPED "SATELLITE 1957"
PER ROS 14492 (STA 187)
N 1791543.21, E 6339178.94

FD 4" BR DISC MKD "SD CITY
ENG" IN WELL PER ROS 9843,
16894 & 21888
N 1787449.55, E 6326224.33
ELEV = 523.07 NGVD 29
CSF = 1.0000231
CONV. ANGLE = -0° 25' 11.74"

FD 1 1/4" W/BROKEN TOP,
ACCEPTED AS PERPETUATION
OF E 1/4 CORNER SEC. 31
AS SHOWN ON ROS 16894
N 1784872.58, E 6326211.36

VICINITY MAP, BASIS OF BEARINGS & EASEMENT DETAIL
NOT TO SCALE

BASIS OF BEARINGS

THE BASIS OF BEARINGS FOR THIS PLAT IS THE CALIFORNIA COORDINATE SYSTEM, CCS83, ZONE 6, EPOCH 1991.35. TRAVERSE MEASUREMENTS TO POINTS 'A' AND 'B' ARE SHOWN HEREON. THE CCS83 COORDINATES OF POINTS 'A' AND 'B' ARE ESTABLISHED FROM G.P.S. STATION 187 AND G.P.S. STATION 189 PER RECORD OF SURVEY NO. 14492. THE BEARING FROM POINT 'A' TO POINT 'B' IS S 00° 17' 18" W.

QUOTED BEARINGS & DISTANCES FROM REFERENCE MAPS OR DEEDS MAY OR MAY NOT BE IN TERMS OF SAID SYSTEM.

THE COMBINED GRID FACTOR AT POINT 'A' IS 1.0000231. GRID DISTANCE = GROUND DISTANCE X COMBINED FACTOR. ELEVATION AT POINT 'A' IS 523.07 (NGVD 29)

REFERENCE DRAWINGS

ROS 16894 & 21888, DOC 1999-400948

ASSESSOR PARCEL NUMBERS

645-080-16

LEGEND

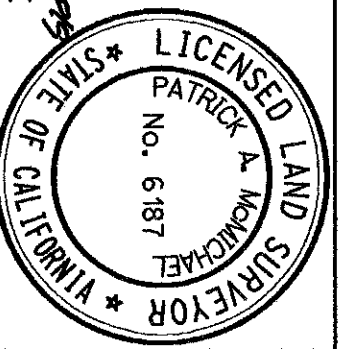
IRREVOCABLE OFFER TO DEDICATE STREET PURPOSES ACQUIRED, CONTAINS 0.45 ACRES, MORE OR LESS

P.O.B. POINT OF BEGINNING

T.P.O.B. TRUE POINT OF BEGINNING

- ① ROAD ESMT. TO THE COUNTY OF SAN DIEGO REC. 9/17/1899 IN BK 280, PG 93 OF DEEDS
- ② ACCESS RIGHTS RELINQUISHED PER DOC. REC. 6/09/1999 AS INST. 1999-400948, O.R.
- ③ SLOPE ESMT. PER DOC. REC. 6/09/1999 AS INST. 1999-400948, O.R.
- ④ SDGE ESMT. REC. 6/8/2008 AS INST. 2000-301689, O.R.
- ⑤ ACCESS RIGHTS RELINQUISHED PER DOC. REC. 8/15/2007 AS INST. 2007-544805, O.R.

RICK
ENGINEERING COMPANY
3620 FRIARS ROAD
SAN DIEGO, CA 92110
619.291.0707
(FAX) 619.291.4165
J. 181575



Patrick A. McMichael
PATRICK A. MCMICHAEL, LS 6187 DATE 3-20-2019

DOCUMENT NO. 2019-0162135 O.R.
RECORDED MAY 1, 2019

**IRREVOCABLE OFFER TO DEDICATE - STREET PURPOSES
IN A PORTION OF SEC 32, T 18 S, R 1 W, SBM.**

DESCRIPTION	BY	APPROVED DATE	FILMED	CITY OF SAN DIEGO, CALIFORNIA	PTS
ORIGINAL	REC	FRL	5/1/19	SHEET 1 OF 2 SHEET	618357
					I.O. N/A
					1784-6325
					CCS 83 COORDINATES
					144-1765
					NAD 27 COORDINATES
COMPLETE				STATUS	41047-1-B

