

NOTE: ALL STREETS DEDICATED PER MM 35

BASIS OF BEARINGS

THE CALCULATED BEARING OF N22°09'05"E PER R.O.S. NO. 19822, BEING A DIRECT TIE BETWEEN THE TWO FOUND MONUMENTS WITHIN ROSECRANS STREET OF SAID RECORD OF SURVEY.

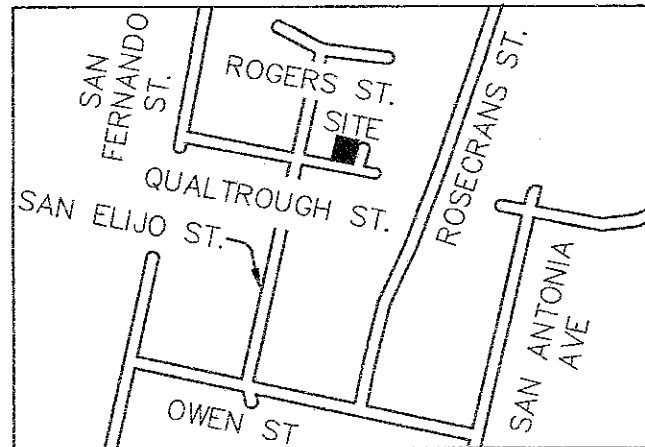
LEGEND



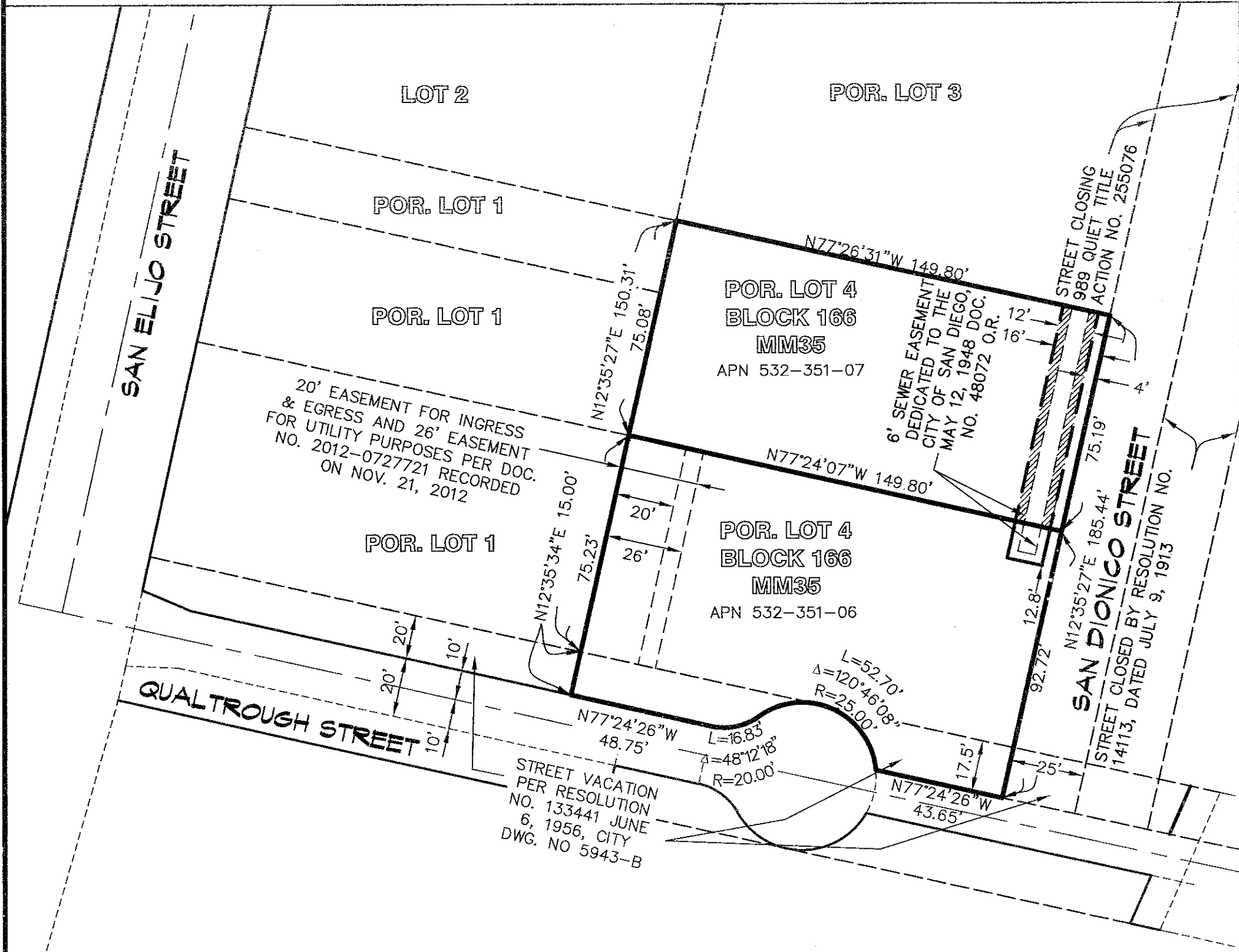
PUBLIC SEWER EASEMENT ACQUIRED
PARCEL 'A' = 451 S.F.



SCALE 1" = 40'

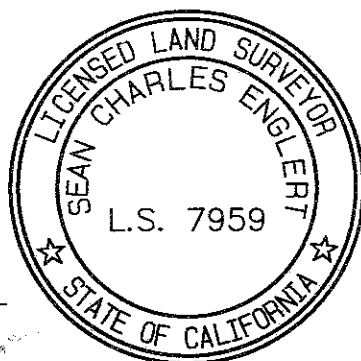


VICINITY MAP
NOT TO SCALE



COASTAL LAND SOLUTIONS, INC.

577 SECOND STREET
ENCINITAS, CA 92024
PH (760) 230-6025
FAX (760) 230-6026



Sean C. Englert 2-4-19
SEAN C. ENGLERT, L.S. 7959 DATE

RESOLUTION No. _____
RECORDED _____
DOCUMENT No. 2019-0197153 / 2019-0206255
RECORDED MAY 23, 2019 / MAY 30, 2019

PUBLIC SEWER EASEMENT

IN A PORTION OF LOT 4 OF BLOCK 166 OF LA PLAYA, ACCORDING TO MAP PUEBLO LANDS OF SAN DIEGO MADE BY CHARLES H. POOLE IN 1856, AS RECORDED IN GRANT DEED DOC. NO. 173909, DATED OCTOBER 31, 1966 MM35.

DESCRIPTION	BY	APPROVED	DATE	FILMED	CITY OF SAN DIEGO, CALIFORNIA SHEET 1 OF 2 SHEET	PTS
ORIGINAL	S.C.E.	FRL	5/19			
					<i>Charles R. A. Poy</i> FOR CITY LAND SURVEYOR	I.O. N/A
					5/22/19 DATE	1841-6257
						CCS 83 COORDINATES
						200-1697
						NAD 27 COORDINATES
COMPLETED						41108-1-B _L

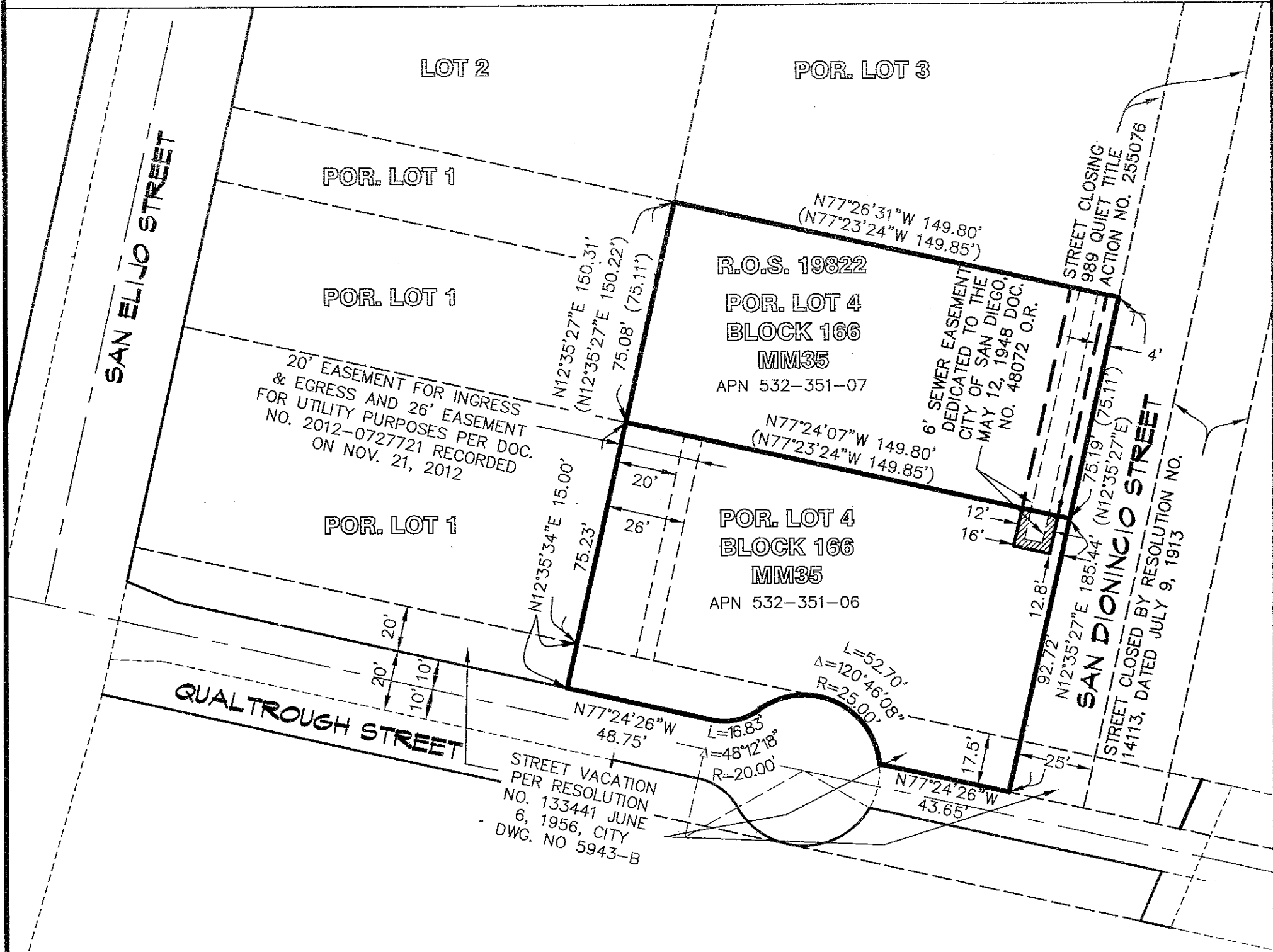
LEGEND



PUBLIC SEWER EASEMENT ACQUIRED
PARCEL 'B' = 96 S.F.

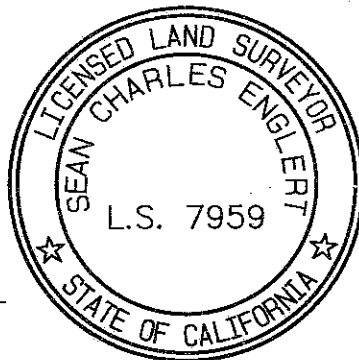
() INDICATES RECORD INFORMATION PER ROS NO. 19822

SCALE 1" = 40'



COASTAL LAND SOLUTIONS, INC.

577 SECOND STREET
ENCINITAS, CA 92024
PH (760) 230-6025
FAX (760) 230-6026



Sean C. Englert 2-4-19
SEAN C. ENGLERT, L.S. 7959 DATE

RESOLUTION No. _____
RECORDED _____
DOCUMENT No. 2019-0197153 / 2019-0206255
RECORDED MAY 23, 2019 / MAY 30, 2019

PUBLIC SEWER EASEMENT

IN A PORTION OF LOT 4 OF BLOCK 166 OF LA PLAYA, ACCORDING TO MAP PUEBLO LANDS OF SAN DIEGO MADE BY CHARGLES H. POOLE IN 1856 MM35.

DESCRIPTION	BY	APPROVED	DATE	FILMED	CITY OF SAN DIEGO, CALIFORNIA	PTS 622899
ORIGINAL	S.C.E.	FRL	5/19		SHEET 2 OF 2 SHEET	I.O. N/A
					<i>Frank R. FD</i> 5/22/19 FOR CITY LAND SURVEYOR DATE	1841-6257 CCS 83 COORDINATES
						200-1697 NAD 27 COORDINATES
COMPLETED				STATUS		41108-2-B