

VICINITY MAP

NOT TO SCALE

REFERENCES

RECORD OF SURVEY NO. 9174
 RECORD OF SURVEY NO. 11428
 MAP NO. 15589, DWG 41112-D

APN

308-020-17-00

LEGEND

 INDICATES COVENANT OF EASEMENT ACQUIRED
 CONTAINS 62,262.65 SQUARE FEET (1.429 AC), MORE OR LESS

() INDICATES RECORD DATA PER RECORD OF SURVEY 11428

(()) INDICATES RECORD DATA PER RECORD OF SURVEY 9174

P.O.B. INDICATES POINT OF BEGINNING

PARCEL BOUNDARY LINE 

COVENANT OF EASEMENT LINE 

EASEMENT LINE 

BASIS OF BEARINGS

THE BASIS OF BEARINGS FOR THIS SURVEY IS THE CALIFORNIA COORDINATE SYSTEM, CCS83, ZONE 6, EPOCH 1991.35 AND IS DETERMINED BY G.P.S. MEASUREMENTS TAKEN ON SEPTEMBER 10, 2018 AT POINTS "A" AND "B" AS SHOWN HEREON. POINTS "A" & "B" WERE ESTABLISHED FROM G.P.S. STATION PT 560 AND G.P.S. STATION PT 568 PER RECORD OF SURVEY NO. 14492. THE BEARING FROM POINT "A" TO POINT "B" IS NORTH 89°43'20"EAST".

QUOTED BEARINGS FROM REFERENCE MAPS OR DEEDS MAY OR MAY NOT BE IN TERMS OF SAID SYSTEM.

THE COMBINED GRID FACTOR AT POINT "A" IS 0.999963474
 GRID DISTANCE = GROUND DISTANCE x COMBINED GRID FACTOR
 ELEVATION AT POINT "A" IS 400.77' MSL (NGVD 1929)



A2016-43

CHRISTENSEN ENGINEERING & SURVEYING

7888 SILVERTON AVENUE, SUITE J
 SAN DIEGO, CA 92126
 (858) 271-9901



MAY 05, 2020

ANTONY K. CHRISTENSEN
 L.S. 7508, EXPIRES 12-31-21

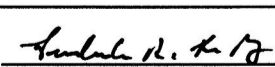
DATE

DOC. NO.: 2020-0494058

RECORDED: Aug 28, 2020

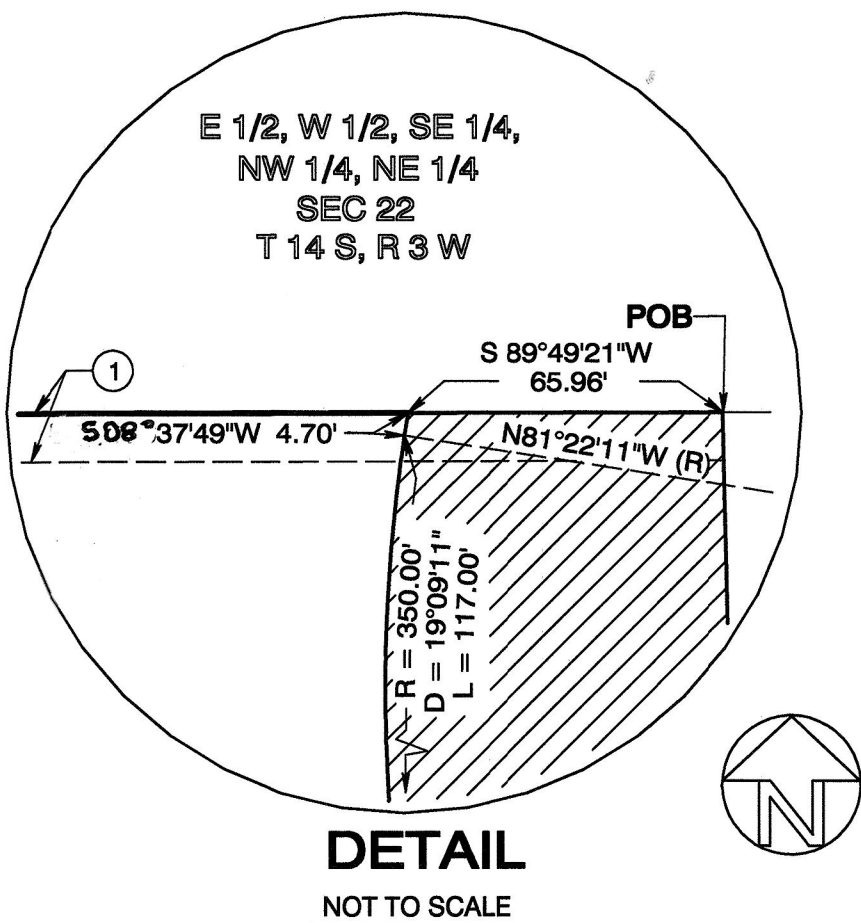
COVENANT OF EASEMENT

IN THE W 1/2 OF THE NE 1/4 OF THE SW 1/4 OF THE NE 1/4 SECTION 22, T14 S, R 3 W, SBM

DESCRIPTION	BY	APPROVED	DATE	FILMED	CITY OF SAN DIEGO, CALIFORNIA		P.T.S. 623319
ORIGINAL	CE&S	S.O.	9/3/2020		SHEET 1 OF 3 SHEETS		IO NO. N/A
					 FOR CITY LAND SURVEYOR	5/21/2020 DATE	1922-6275 CCS 83 COORDINATES
					DIVISION HEAD		282-1715 LAMBERT COORDINATES
					SECTION HEAD		41113-1-B
ACQUIRED					STATUS		

TITLE NOTES

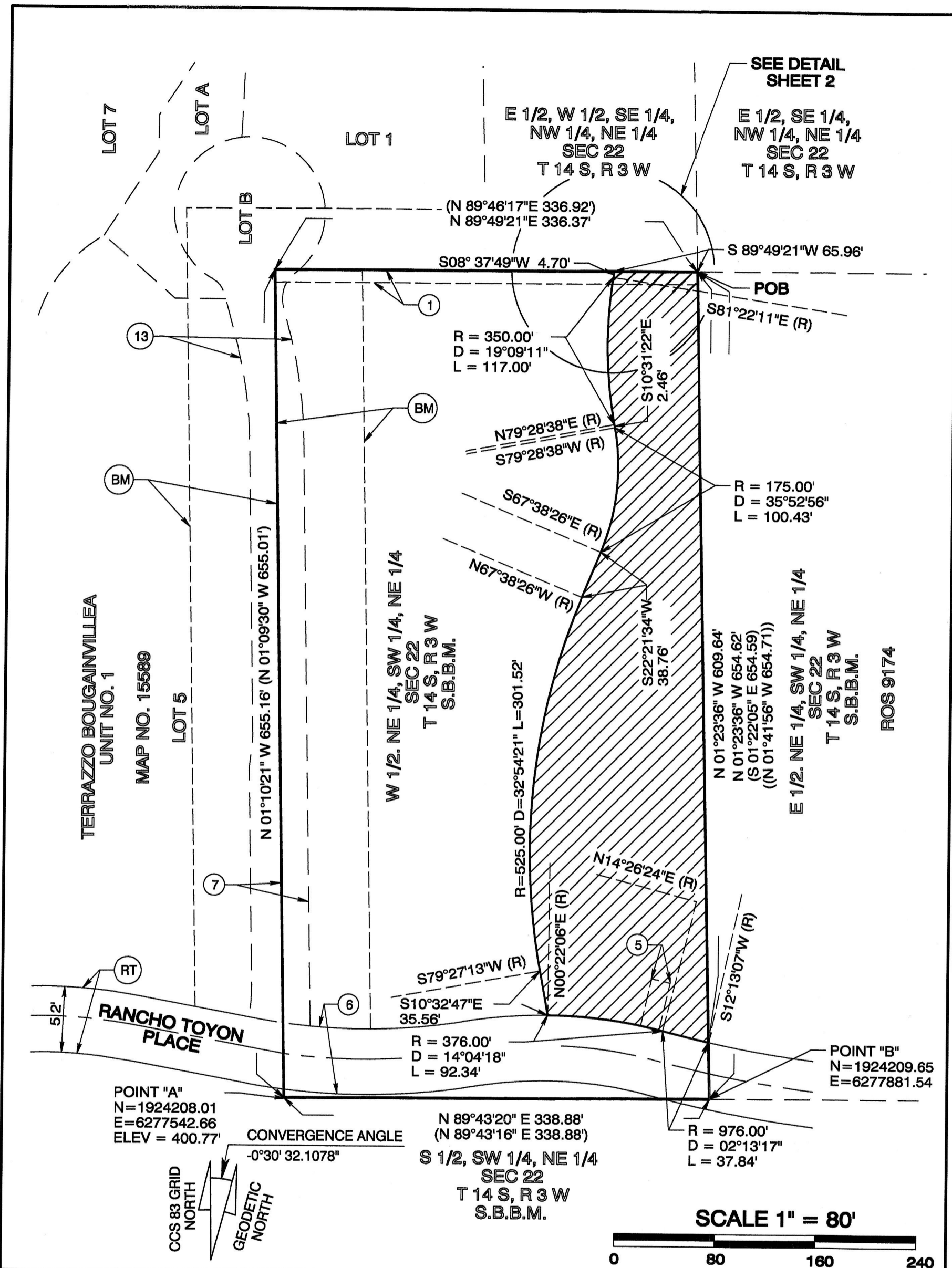
- 1 A 10' EASEMENT FOR ROAD AND PUBLIC UTILITY EASEMENT IN FAVOR OF JAMES L. AND MARY J. SHIPLEY, RECORDED APRIL 24, 1957 IN BOOK 6549, PAGE 141 OF OFFICIAL RECORDS
- 5 AN EASEMENT FOR STORM DRAIN AND TEMPORARY CONSTRUCTION EASEMENT RECORDED AUGUST 20, 2004 AS INSTRUMENT NO. 2004-0795959 OF OFFICIAL RECORDS
- 6 AN IRREVOCABLE OFFER OF DEDICATION FOR ROAD PURPOSES RECORDED SEPTEMBER 17, 2004, AS INSTRUMENT 2004-0886189 OF OFFICIAL RECORDS AND SAID OFFER ACCEPTED BY THE CITY OF SAN DIEGO BY INSTRUMENT RECORDED JULY 15, 2005 AS NO., 2005-0599837 OF OFFICIAL RECORDS
- 7 A GENERAL UTILITY EASEMENT IN FAVOR OF THE CITY OF SAN DIEGO RECORDED AUGUST 10, 2007 AS INSTRUMENT NO. 2007-0535289 OF OFFICIAL RECORDS
- 13 ROAD EASEMENT IN FAVOR OF VARIOUS ENTITIES, CONTAINED IN THAT CERTAIN "RECIPROCAL ACCESS AGREEMENT AND GRANT OF EASEMENTS", RECORDED MAY 11, 2005 AS INSTRUMENT NO. 2005-0399416 OF OFFICIAL RECORDS
- BM TEMPORARY BRUSH MANAGEMENT EASEMENT CONTAINED IN THAT CERTAIN "RECIPROCAL ACCESS AGREEMENT AND GRANT OF EASEMENTS", RECORDED MAY 11, 2005 AS INSTRUMENT NO. 2005-0399416 OF OFFICIAL RECORDS
- RT AN IRREVOCABLE OFFER OF DEDICATION FOR ROAD PURPOSES RECORDED SEPTEMBER 17, 2004, AS INSTRUMENT 2004-0886266 OF OFFICIAL RECORDS AND SAID OFFER ACCEPTED BY THE CITY OF SAN DIEGO BY BY INSTRUMENT RECORDED JULY 15, 2005 AS NO., 2005-0599836 OF OFFICIAL RECORDS



COVENANT OF EASEMENT

IN THE W 1/2 OF THE NE 1/4 OF THE SW 1/4 OF THE NE 1/4 SECTION 22, T14 S, R 3 W, SBM

DESCRIPTION	BY	APPROVED	DATE	FILMED	CITY OF SAN DIEGO, CALIFORNIA	P.T.S. 623319
ORIGINAL	CE&S	S.O.	9/3/2020		SHEET 2 OF 3 SHEETS	IO NO. N/A
					<i>Frank R. ...</i> FOR CITY LAND SURVEYOR	<u>5/21/2020</u> DATE
					DIVISION HEAD	1922-6275 CCS 83 COORDINATES
					SECTION HEAD	282-1715 LAMBERT COORDINATES
ACQUIRED						41113-2-B
STATUS						



COVENANT OF EASEMENT

IN THE W 1/2 OF THE NE 1/4 OF THE SW 1/4 OF THE NE 1/4 SECTION 22, T14 S, R 3 W, SBM

DESCRIPTION	BY	APPROVED	DATE	FILMED	CITY OF SAN DIEGO, CALIFORNIA		P.T.S.
ORIGINAL	CE&S	S.O.	9/3/2020		SHEET 3 OF 3 SHEETS		623319
					<i>Fred R. King</i> FOR CITY LAND SURVEYOR		N/A
					DATE: 5/21/2020		1922-6275
					DIVISION HEAD: _____		CCS 83 COORDINATES
					SECTION HEAD: _____		282-1715
ACQUIRED					STATUS		LAMBERT COORDINATES
							41113-3-B