

EXHIBIT "B"

LEGEND

SEWER EASEMENTS VACATED HEREON
1063 SQ. FEET (0.02 AC) MORE OR LESS

P.O.B. POINT OF BEGINNING

T.P.O.B. TRUE POINT OF BEGINNING

() RECORD DATA PER INDICATED SOURCE

R1 SEWER ESMT. REC. 4-29-1959 IN BK 7632,
PG 210, O.R.

R2 SEWER ESMT. REC. 8-13-1948 IN BK 2911,
PG 71, O.R.

① SEWER ESMT. GRANTED TO CITY OF
SAN DIEGO REC. 4-29-1959 AS DOC. NO. 84947
IN BK 7632, PG 210, O.R.

② SEWER ESMT. GRANTED TO CITY OF
SAN DIEGO PER DOC. REC. 8-13-1948
AS DOC. NO. 81209 IN BK 2911, PG 71, O.R.

③ QUITCLAIM DEED REC. 4-30-1959 IN BK 7635, PG 207, O.R.

④ SDGE ESMT. REC. 11-20-1973 AS FILE NO. 73-323538, O.R.

⑤ SDGE ESMT. REC. 5-15-1951 IN BK 4099, PG 146, O.R.

⑥ CITY OF SAN DIEGO ABBUTTER'S RIGHTS OF ACCESS
RELINQUISHMENT REC. 2-19-1987 DOC. NO. 87-089050, O.R.

BASIS OF BEARINGS

BEARINGS AND DISTANCES SHOWN HEREIN ARE
BASED UPON RECORD INFORMATION PER THE
STATED SOURCE.

REFERENCE DRAWINGS

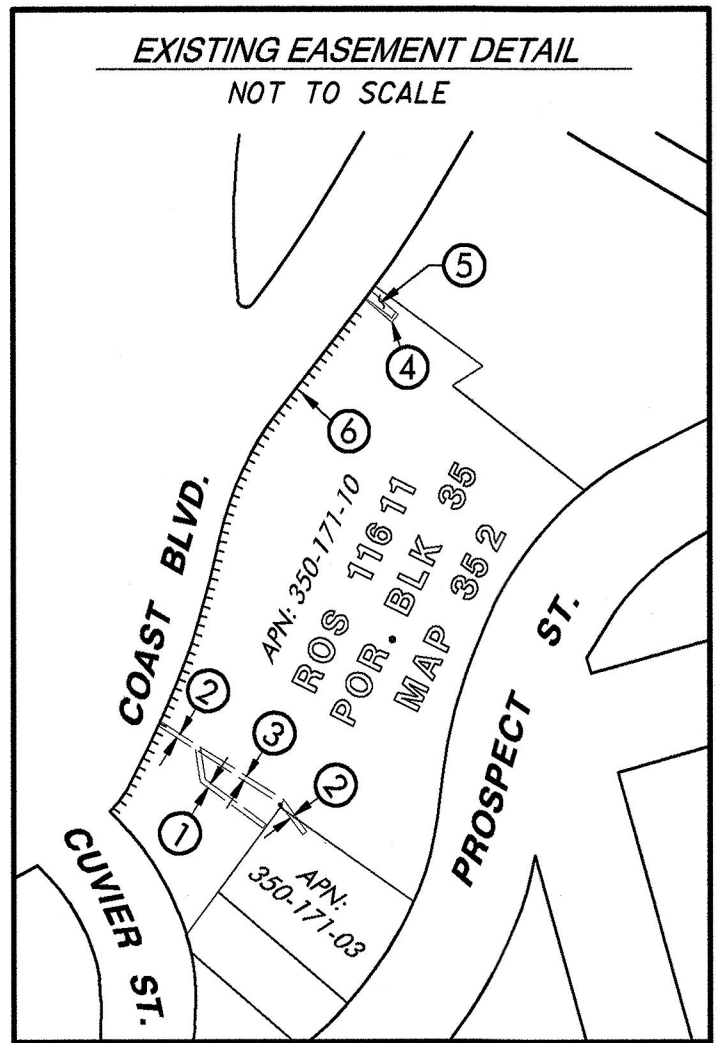
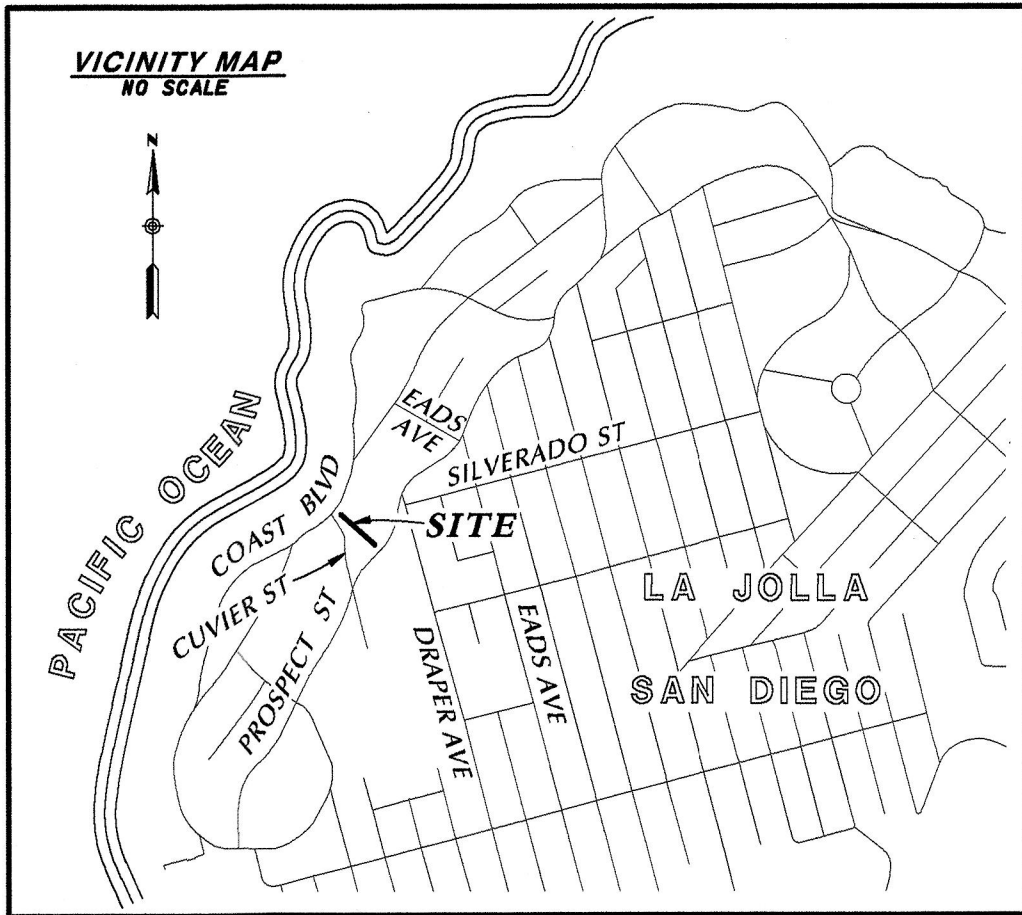
ROS 11611, ROS 963, MAP 352

ASSESSOR PARCEL NUMBERS

350-171-10 & APN 350-171-03

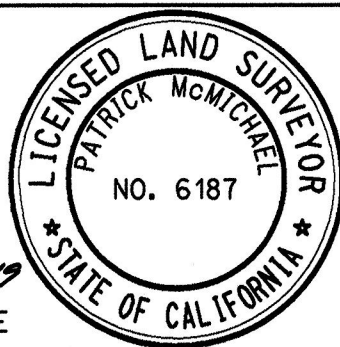
NON-PLOTTABLE EASEMENT

SDG&E EASEMENT REC. 4-27-1950 IN BOOK
3599, PAGE 08, O.R. HAS NO LOCATION SET
FORTH IN SAID DOCUMENT AND CANNOT BE
PLOTTED HEREON.



5620 FRIARS ROAD
SAN DIEGO, CA 92110
619-291-0707
(FAX) 619-291-4165

J. 18025A



Patrick A. McMichael 3/5/2019
PATRICK A. McMICHAEL, LS 6187 DATE

RESOLUTION No. CM-6850
RECORDED APRIL 22, 2019
DOCUMENT No. 2019-0193502
RECORDED MAY 22, 2019

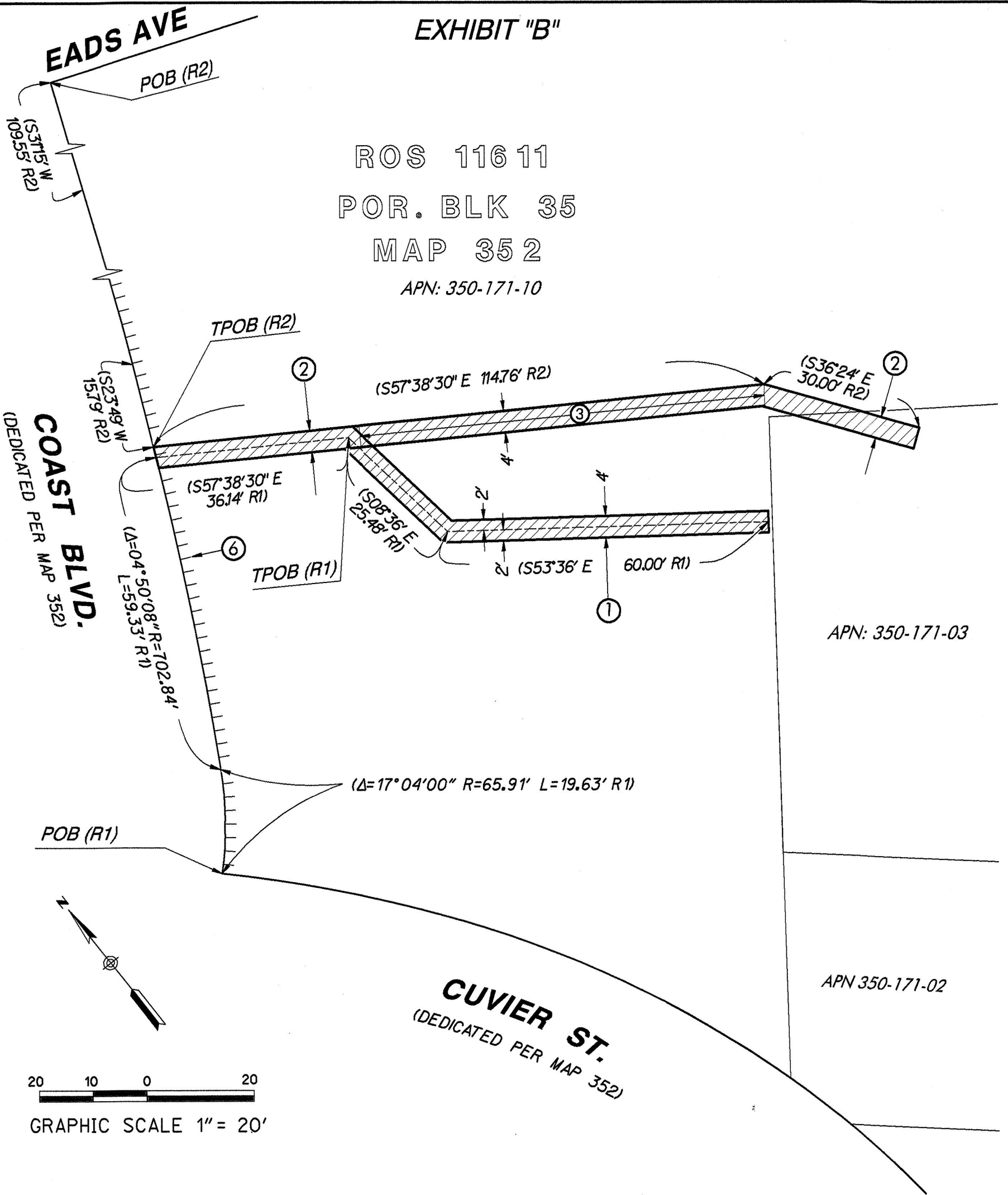
VACATION OF SEWER EASEMENTS

WITHIN A PORTION OF BLOCK 35 OF "LA JOLLA PARK" MAP 352

DESCRIPTION	BY	APPROVED	DATE	FILMED	CITY OF SAN DIEGO, CALIFORNIA	PTS
ORIGINAL	REC	S.O.	3/12/19		SHEET 1 OF 2 SHEET	617366
					<i>Franklin R. Poy</i>	1886 - 6243
					FOR CITY LAND SURVEYOR	CCS 83 COORDINATES
					DATE	246 - 1683
						NAD 27 COORDINATES
COMPLETED					STATUS	41130-1-B

EXHIBIT "B"

ROS 116 11
 POR. BLK 35
 MAP 35 2
 APN: 350-171-10



RICK
 ENGINEERING COMPANY
 5620 FRIARS ROAD
 SAN DIEGO, CA 92110
 619-291-0707
 (FAX) 619-291-4165
 J. 18025A

VACATION OF SEWER EASEMENTS
 WITHIN A PORTION OF BLOCK 35 OF "LA JOLLA PARK" MAP 352

DESCRIPTION	BY	APPROVED	DATE	FILMED	CITY OF SAN DIEGO, CALIFORNIA	PTS
ORIGINAL	REC	S.O.	5/22/19		SHEET 2 OF 2 SHEET	617366
						I.O. N/A
					<i>Fredrick R. K. Poe</i>	1886 - 6243
					FOR CITY LAND SURVEYOR	CCS 83 COORDINATES
					DATE	246 - 1683
						NAD 27 COORDINATES
COMPLETED STATUS						41130 - 2 - B