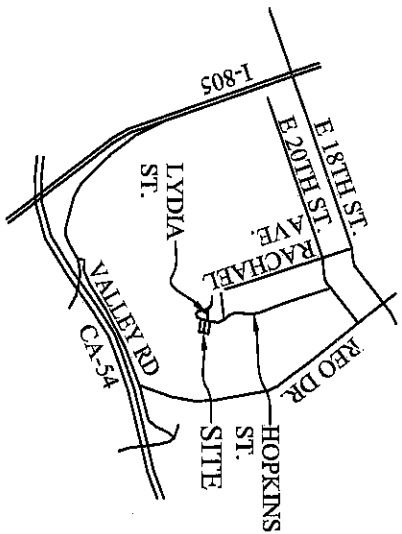
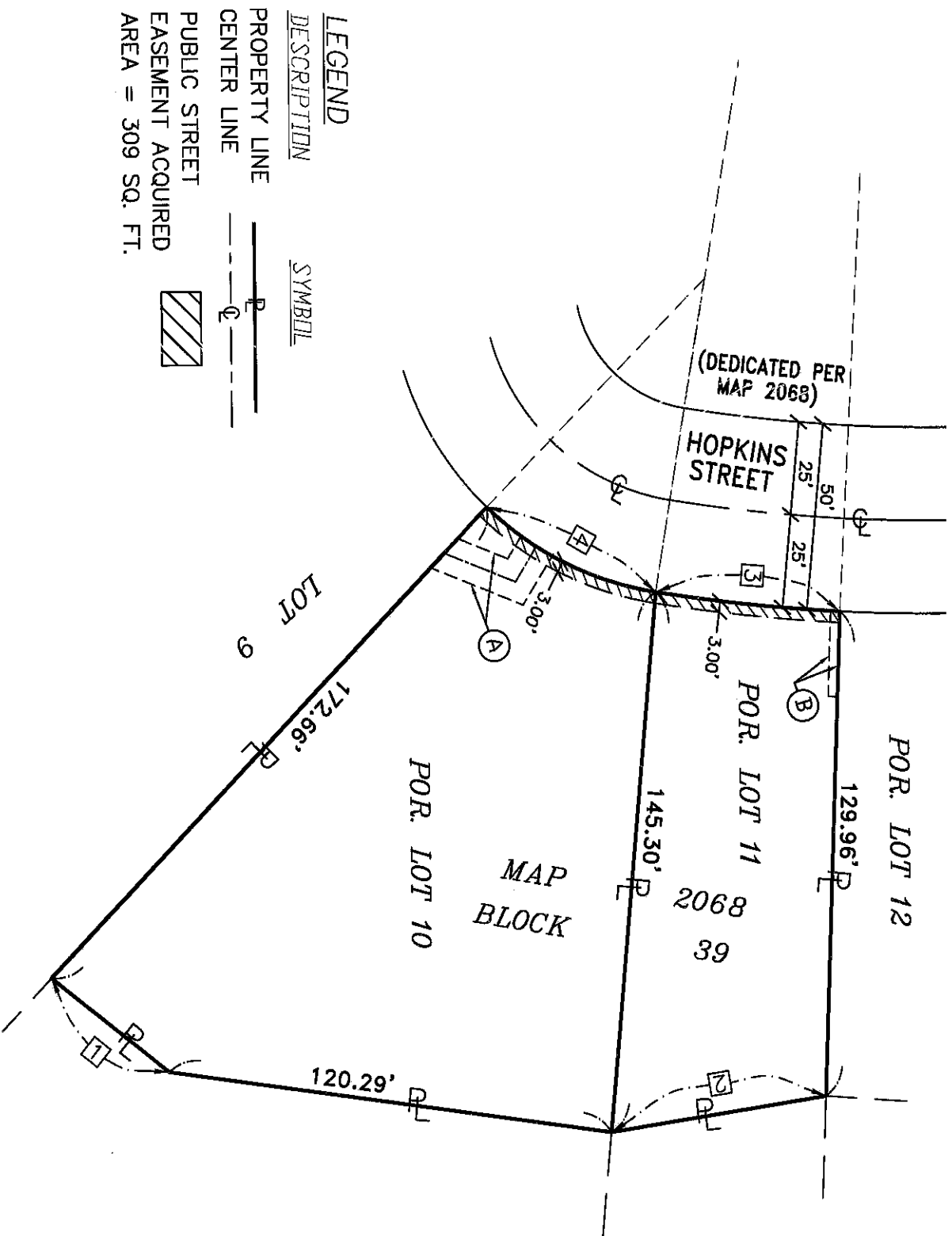
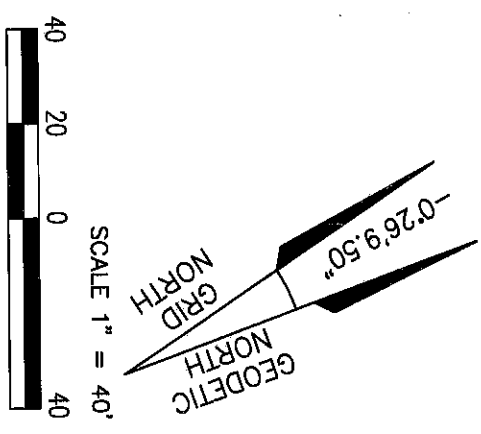


EXHIBIT "B"



	□	RADIUS LENGTH
1.	—	40.31'
2.	—	58.66'
3.	—	49.96'
4.	—	51.89'



- LEGEND**
- DESCRIPTION SYMBOL
- PROPERTY LINE — P —
- CENTER LINE - - - C - - -
- PUBLIC STREET EASEMENT ACQUIRED AREA = 309 SQ. FT. [Hatched Box]

**EASEMENT DESCRIPTION**

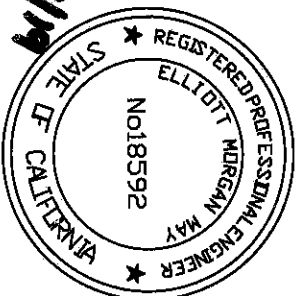
- (A) EXIST. 10 FOOT WIDE STORM DRAIN EASEMENT GRANTED TO THE CITY OF SAN DIEGO PER FILE/PAGE NO. 81-107384, RECORDED APRIL 8, 1981 O.R.
- (B) EXIST. 2.5 FOOT WIDE EASEMENT FOR PUBLIC UTILITIES GRANTED TO SDG&E RECORDED JULY 27, 1961 AS FILE/PAGE NO. 129025.

**REFERENCES**

MAP No. 2068  
 LOT LINE ADJUSTMENT PLAT 40336-U  
 CITY OF SAN DIEGO DRAWING 39699-D  
 A.P.N. 564-100-44, 45

MAY ENGINEERING  
 12222 "A" WOODSIDE AVE #237  
 LAKESIDE, CA 92040  
 PHONE: 619-251-5094

*Elliott M. May RCE*  
 ELLIOTT M. MAY RCE 18592 DATE



RESOLUTION No. N/A  
 RECORDED N/A  
 DOCUMENT No. 2019-0282411  
 RECORDED July 15, 2019

**PUBLIC STREET EASEMENT**

ALL THAT PORTION OF LOT 10 AND 11 IN BLOCK 39 OF PARADISE HILLS UNIT NO. 2, MAP 2068

DESCRIPTION	BY	APPROVED	DATE	FILMED	CITY OF SAN DIEGO, CALIFORNIA	PTS
1. ORIGINAL	MES				SHEET 1 OF 1 SHEET	I.O. N/A
			A.N. 7/15/19		FOR CITY LAND SURVEYOR DATE 7/15/19	1822-6309
						CCS 83 COORDINATES
						182-1749
						NAD 27 COORDINATES
						41164-B

COMPLETED

STATUS