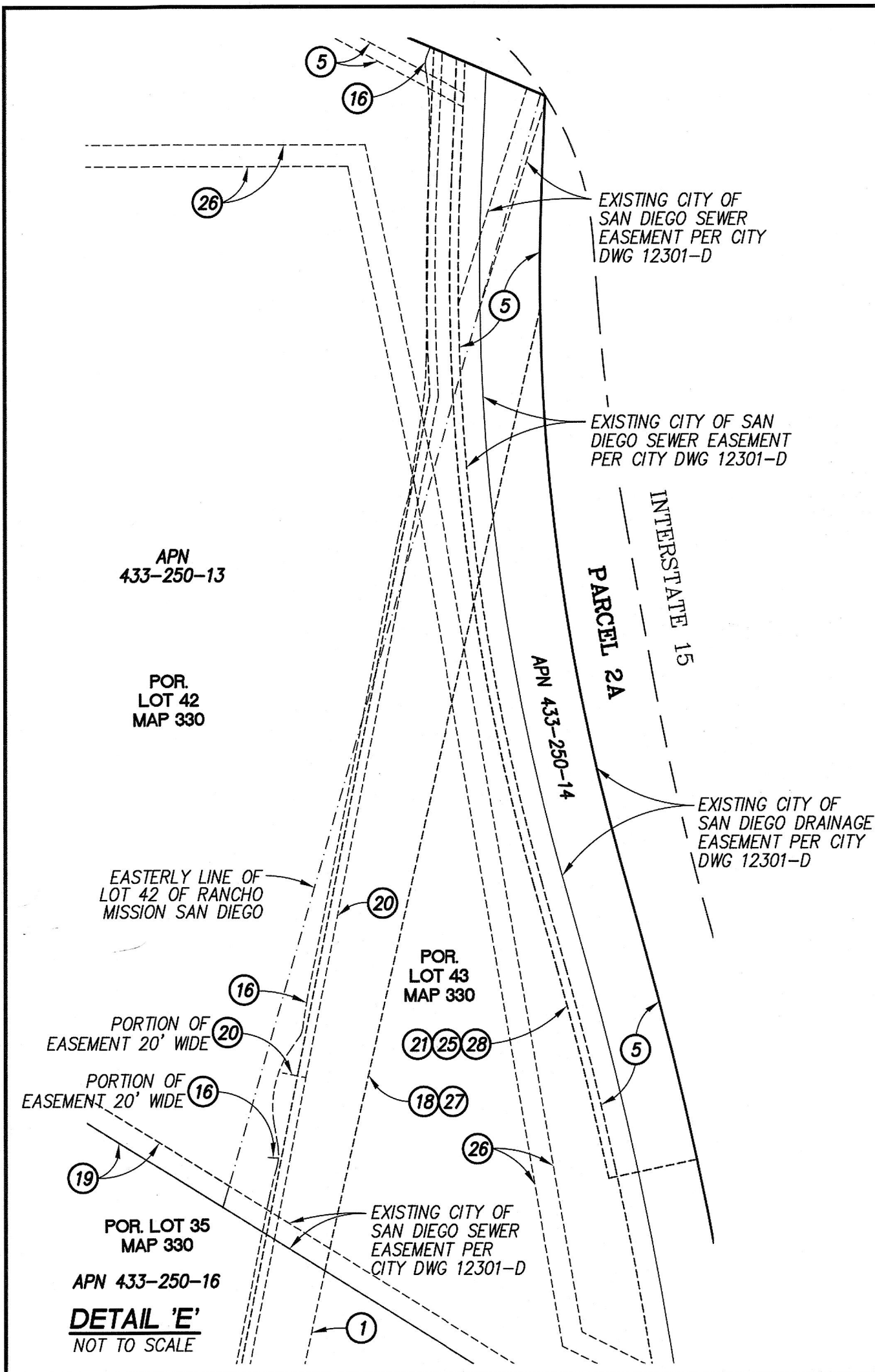


| LINE TABLE CONTINUED | | |
|----------------------|-------------|----------|
| LINE | DIRECTION | LENGTH |
| L47 | N32°42'33"W | 320.28' |
| L48 | N40°11'31"E | 1072.90' |
| L49 | N5°14'49"W | 71.10' |
| L50 | N62°12'52"E | 154.88' |
| L51 | N87°00'22"E | 387.71' |
| L52 | N71°35'53"E | 924.13' |
| L53 | S79°52'10"E | 149.80' |
| L54 | S0°41'37"W | 21.59' |
| L55 | S72°13'17"E | 530.72' |
| L56 | S21°05'29"W | 43.80' |
| L57 | S72°12'55"E | 97.37' |
| L58 | S67°55'34"E | 116.79' |
| L59 | S4°14'00"E | 72.93' |
| L60 | S10°01'50"E | 179.22' |
| L61 | S15°38'32"E | 309.60' |
| L62 | N74°21'28"E | 12.00' |
| L63 | S15°38'32"E | 488.07' |
| L64 | N4°21'01"W | 69.20' |



PROJECT DESIGN CONSULTANTS
 Planning | Landscape Architecture | Engineering | Survey
 701 B Street, Suite 800 San Diego, CA 92101
 619.235.6471 Tel 619.234.0349 Fax

DOCUMENT NO. 2020-0454908 O.R.
 RECORDED AUGUST 13, 2020

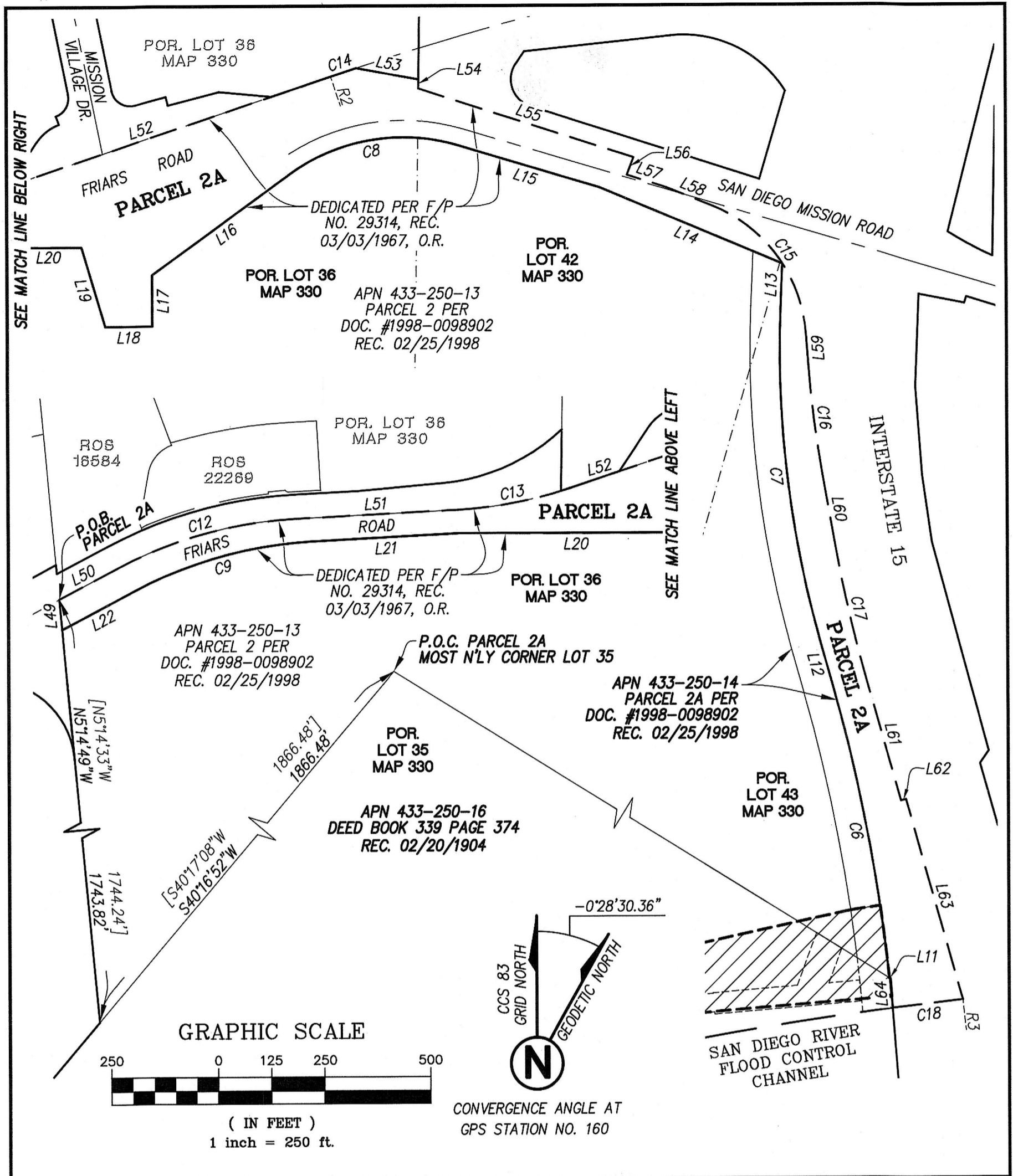
CITY RIVER PARK
 WITHIN A PORTION OF LOTS 35 & 43 OF RANCHO MISSION SAN DIEGO
 OF PARTITION MAP SUPERIOR COURT CASE NO. 348 "JUAN M. LUCO, ET
 AL, VS, THE COMMERCIAL BANK OF SAN DIEGO, ET AL"

| DESCRIPTION | BY | APPRVD. | DATE | FILMED |
|-------------|-----|---------|---------|--------|
| ORIGINAL | PDC | FAL | 7/15/20 | |
| | | | | |
| | | | | |

CITY OF SAN DIEGO, CALIFORNIA
 SHEET 9 OF 10 SHEETS
T. R. City 6/15/2020
 FOR CITY LAND SURVEYOR DATE

P.T.S. NO. 657034
 I.O. NO. N/A
1862-6291
 CCS83 COORDINATES
202-1731
 LAMBERT COORDINATES
41173-9-B

COMPLETE STATUS



PROJECT DESIGN CONSULTANTS
 Planning | Landscape Architecture | Engineering | Survey
 701 B Street, Suite 800 San Diego, CA 92101
 619.235.6471 Tel 619.234.0349 Fax

DOCUMENT NO. 2020-0454908 O.R.
 RECORDED AUGUST 13, 2020

CITY RIVER PARK
 WITHIN A PORTION OF LOTS 35 & 43 OF RANCHO MISSION SAN DIEGO
 OF PARTITION MAP SUPERIOR COURT CASE NO. 348 "JUAN M. LUCO, ET
 AL, VS, THE COMMERCIAL BANK OF SAN DIEGO, ET AL"

| DESCRIPTION | BY | APPRVD. | DATE | FILMED |
|-------------|-----|---------|--------|--------|
| ORIGINAL | PDC | FAL | 7/6/20 | |
| | | | | |
| | | | | |

CITY OF SAN DIEGO, CALIFORNIA
 SHEET 10 OF 10 SHEETS
Indira K... 6/15/2020
 FOR CITY LAND SURVEYOR DATE

P.T.S. NO. 657034
 I.O. NO. N/A
1862-629
 CCS83 COORDINATES
22-1731
 LAMBERT COORDINATES

STATUS
COMPLETE

41173-10-B