

**ASSESSOR'S PARCEL NO.'S:**  
535-563-39 & 42




**REFERENCE DRAWINGS:**

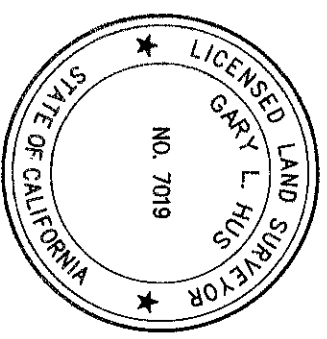
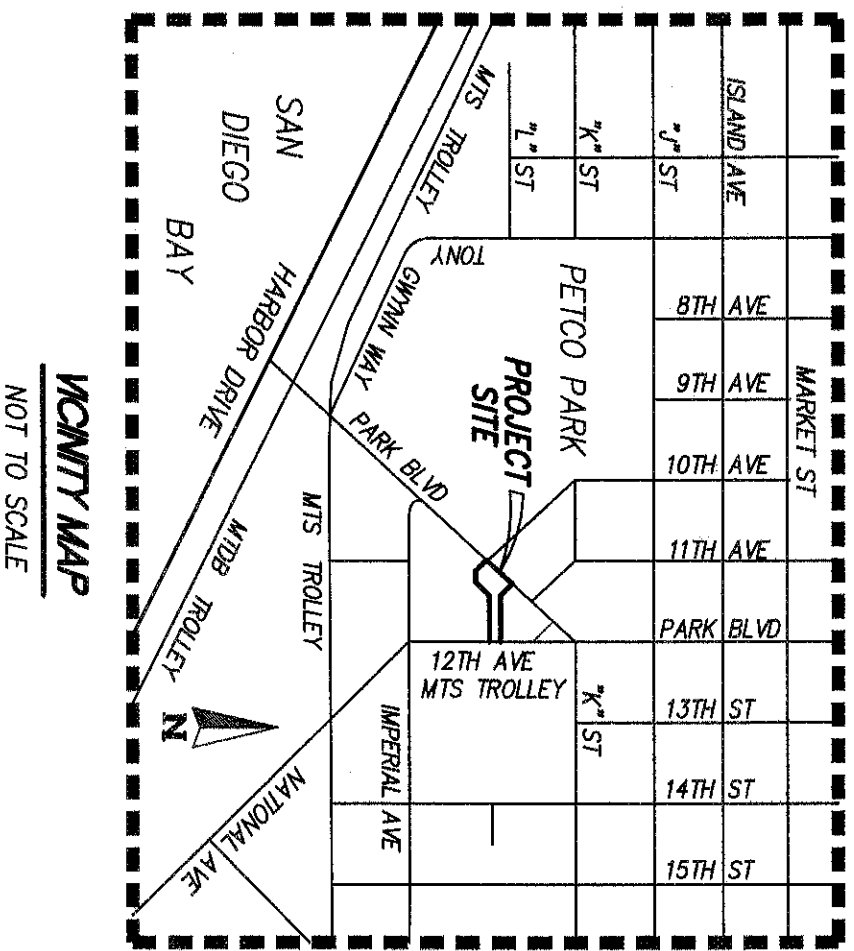
- PARCEL MAP NO. 18855
- PARCEL MAP NO. 19446
- PARCEL MAP NO. 20943
- DWG. NO. 38152-B
- DWG. NO. 39153-B
- DWG. NO. 38153-D
- MAP NO. 16202

**GEOTECHNICAL NOTE**

A NOTICE OF GEOLOGIC AND GEOTECHNICAL CONDITIONS RECORDED JULY 10, 2018 AS DOCUMENT NO. 2018-0280252 OF OFFICIAL RECORDS.

**LEGEND**

-  INDICATES EMERGENCY ACCESS EASEMENT GRANTED PER PM 20943, VACATED
-  INDICATES 3D WATER EASEMENT PER DOCUMENT RECORDED APRIL 14, 2017 AS DOCUMENT NO. 2017-0168893, O.R. (CITY OF SAN DIEGO DWG. NO. 39153-B)
-  INDICATES PUBLIC STREET EASEMENT PER DOCUMENT RECORDED FEBRUARY 12, 2016 AS FILE NO. 2016-0063555, O.R. (CITY OF SAN DIEGO DWG. NO. 38152-B)



*Gary L. Hus*  
GARY L. HUS, L.S. 7019      DATE 10-21-2020

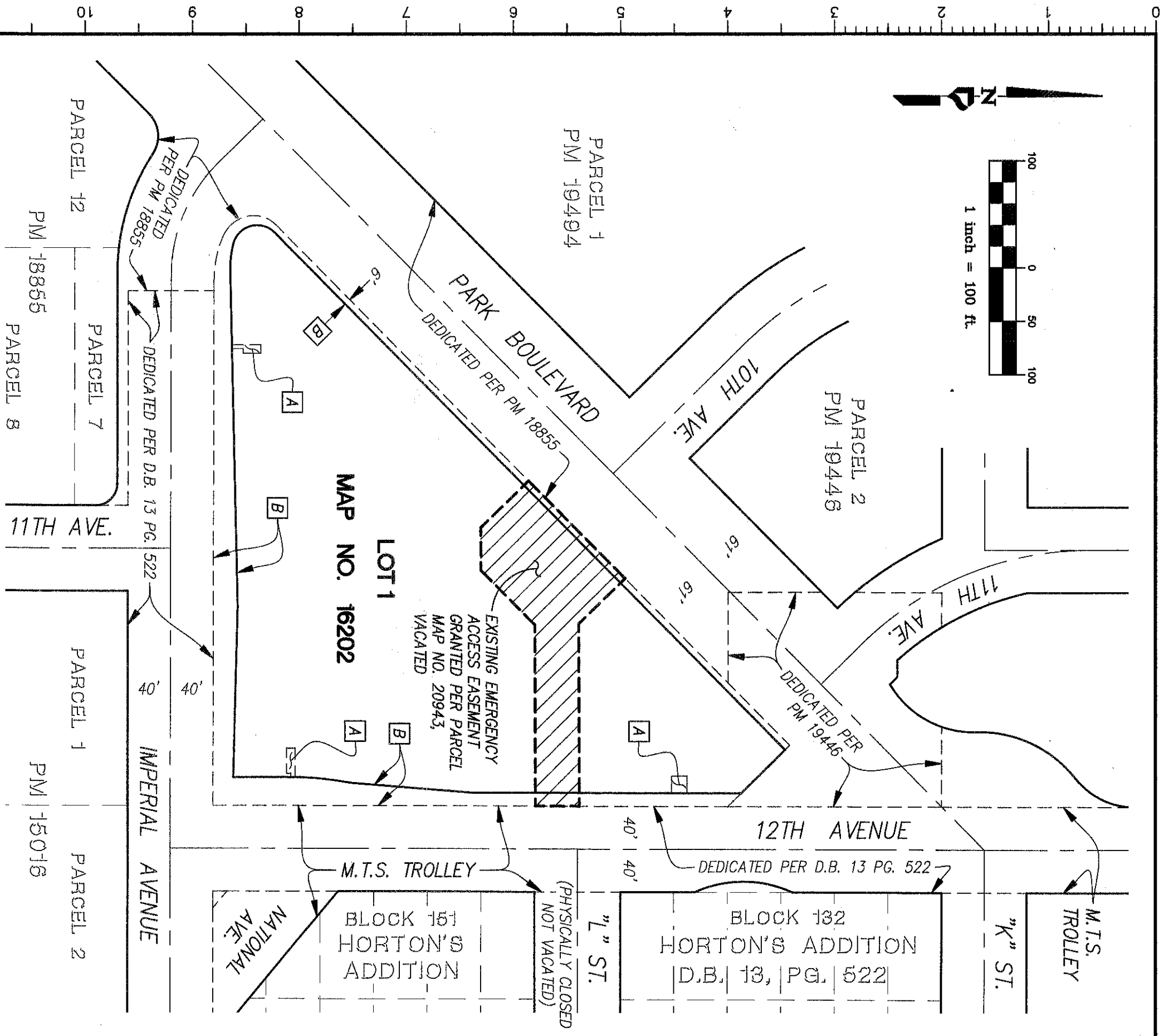
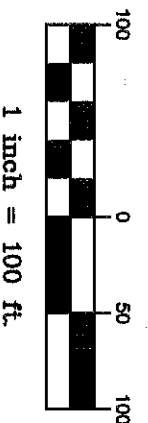
DOCUMENT NO.: 2020 - 0769 484  
RECORDED: 12/2/2020  
RESOLUTION NO.: CM - 6992  
ADOPTED: 9/23/2020

 **PROJECT DESIGN CONSULTANTS**  
701 B Street, Suite 800      San Diego, CA 92101  
619.235.6471 Tel      619.234.0349 Fax

**EMERGENCY ACCESS EASEMENT VACATION**  
IN LOT 1 OF MAP NO. 16202 AND PORTIONS OF PARK BOULEVARD & 12TH AVENUE

DESCRIPTION	BY	APPRVD.	DATE	FILMED
ORIGINAL	PDC			6/3/21
CITY OF SAN DIEGO, CALIFORNIA				
SHEET 1 OF 2 SHEETS				
FOR CITY LAND SURVEYOR <u>Valle R. Ho</u> DATE <u>11/05/2020</u>				
P.T.S. NO. <u>625379</u>				
I.O. NO. <u>N/A</u>				
<u>1836-6281</u>				
CCS83 COORDINATES				
<u>196-1721</u>				
LAMBERT COORDINATES				
<u>41207-1-B</u>				

QUIT CLAIMED



**PROJECT DESIGN CONSULTANTS**  
 701 B Street, Suite 800 San Diego, CA 92101  
 619.236.6471 Tel 619.234.0349 Fax

**EMERGENCY ACCESS EASEMENT VACATION**  
 IN LOT 1 OF MAP NO. 16202 AND PORTIONS OF PARK BOULEVARD & 12TH AVENUE

DESCRIPTION	BY	APPRVD.	DATE	FILMED
ORIGINAL	PDC			6/9/24

CITY OF SAN DIEGO, CALIFORNIA  
 SHEET 2 OF 2 SHEETS  
 FOR CITY LAND SURVEYOR  
 DATE

P.T.S. NO. 625379  
 I.O. NO. N/A  
 1836-6281  
 CCS83 COORDINATES  
 196-1721  
 LAMBERT COORDINATES  
 41207-2-B

*QUITCLAIMED*